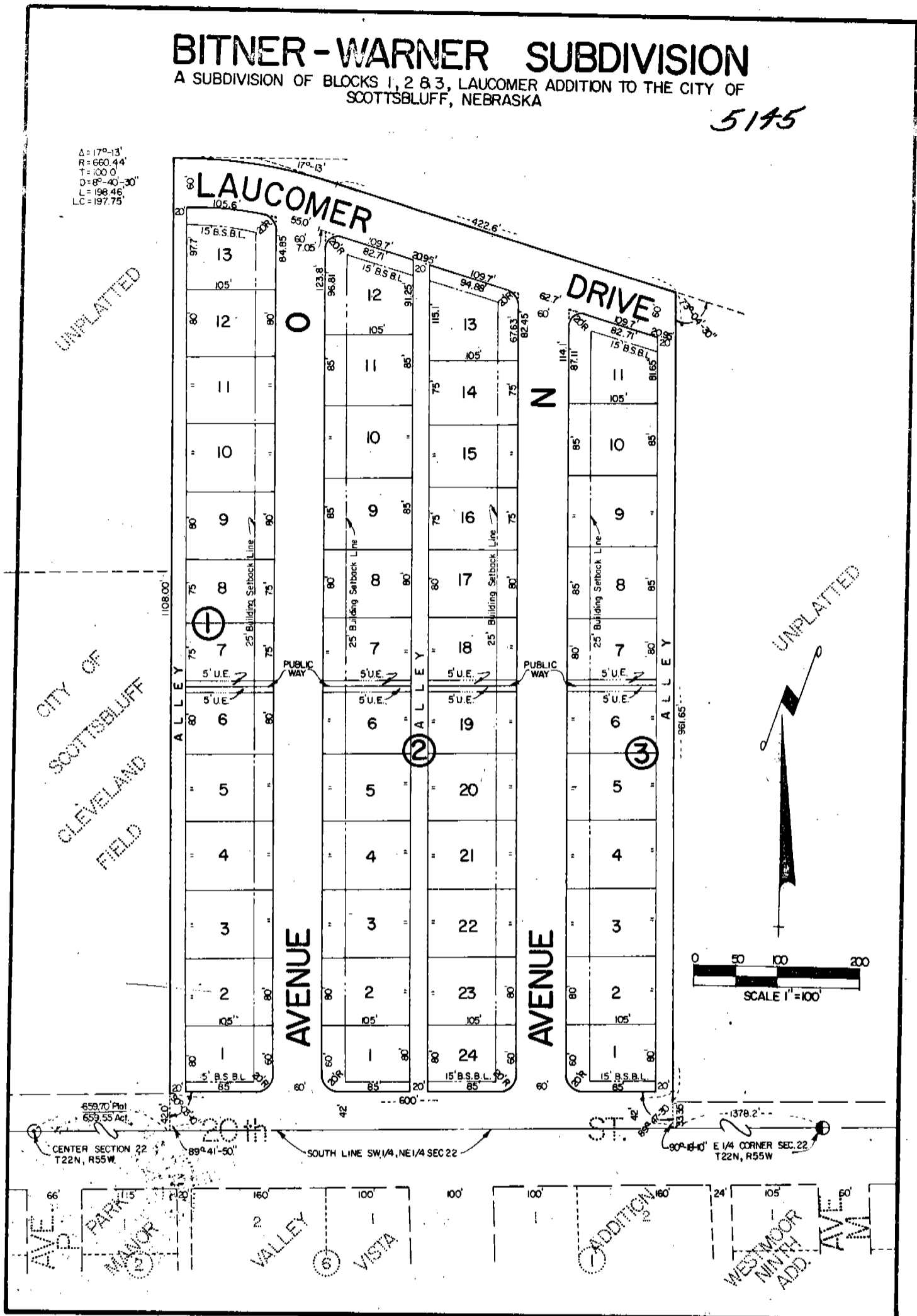


BITNER - WARNER SUBDIVISION

A SUBDIVISION OF BLOCKS 1, 2 & 3, LAUCOMER ADDITION TO THE CITY OF SCOTTSBLUFF, NEBRASKA

5145

$\Delta = 17^{\circ} - 13'$
 $R = 660.44'$
 $T = 100.0'$
 $D = 8^{\circ} - 40' - 30''$
 $L = 198.46'$
 $LC = 197.75'$



Note: See Replat Sp...
Map No. 34

Note: See Replat Lots 7 & 8 Block 1
Deed Book 176 Page 485

Note: See Replat Lots 11-13 Bl. 1, Lots 9-17, Bl 2,
Lot 11 Bl. 3 + S² Laucomer Dr.
Deed 178-647

Bitner-Warner Subdivision of
Blocks 1, 2 and 3
Laucomer Addition to the
City of Scottsbluff, Nebraska
Sheet 2 of 3

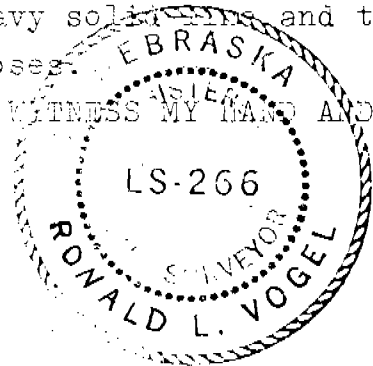
5145

SURVEYOR'S CERTIFICATE

I, Ronald L. Vogel, a competent surveyor of Scotts Bluff County, Nebraska, hereby certify that I have surveyed Blocks 1, 2 and 3, Laucomer Addition to the City of Scottsbluff, Nebraska, and have further surveyed and subdivided such real estate as "Bitner-Warner Subdivision" of Blocks 1, 2 and 3 of such "Laucomer Addition".

That the accompanying plat is a true delineation of such survey and subdivision, drawn to a scale of 100 feet to the inch. That all lot corners are marked with 3/4" x 18" iron rods and that all dimensions are in feet and decimals. That each lot in the subdivision bears its own number. That the boundaries of the blocks subdivided are shown on the plat with a heavy solid line and that adjoining lands are shown dashed for orientation purposes.

WITNESS MY HAND AND SEAL this 4th day of November, 1975.



Ronald L. Vogel
RONALD L. VOGEL
NEBRASKA REGISTERED
LAND SURVEYOR L.S. 266

DEDICATION

The undersigned, being the owners of Blocks 1, 2 and 3, Laucomer Addition to the City of Scottsbluff, Nebraska, as described in the foregoing "Surveyor's Certificate" and shown by the accompanying plat, have caused such real estate to be surveyed and platted as "Bitner-Warner Subdivision", a subdivision of Blocks 1, 2 and 3, Laucomer Addition to the City of Scottsbluff, Nebraska.

We hereby dedicate the easements and designate the building setback lines shown on and referred to in the plat to the use and benefit of the public.

The above described and foregoing subdivision and the easements and building setback designations is made with the free consent and in accordance with the desires of the undersigned owners.

Dated this 7th day of November, 1975.

BITNER-WARNER REALTY INC.



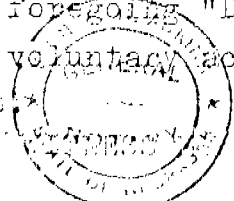
Richard E. Warner
Secretary

By: William S. Bitner
William S. Bitner, President

ACKNOWLEDGEMENT

State of Nebraska)
Scotts Bluff County) ss

Before me, a Notary Public, qualified in such County, personally came William S. Bitner, President of Bitner-Warner Realty Inc., to me known to be the identical person and President of such corporation, who signed the foregoing "Dedication" and acknowledged the execution thereof to be his voluntary act and deed and the voluntary act and deed of such corporation.



WITNESS MY HAND AND NOTARIAL SEAL this 7th day of November, 1975.

My commission expires: July 1, 1976

Virginia H. Atkins
Notary Public

Bitner-Warner Subdivision
Blocks 1, 2 and 3
Ladecomer Addition to the
City of Scottsbluff, Nebraska
Sheet 3 of 3

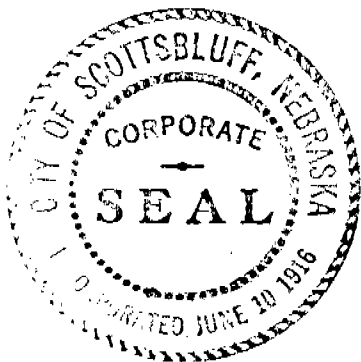
5145

APPROVAL & ACCEPTANCE

The foregoing plat of Bitner-Warner Subdivision of Blocks 1, 2 and 3, Ladecomer Addition to the City of Scottsbluff, Nebraska, approved and accepted by the Mayor and City Council of the City of Scottsbluff, Nebraska, by resolution duly passed this 24th day of NOVEMBER, 1975.

Ronald E. Queman
Mayor

Attest: H. L. Ferguson
City Clerk



NUMERICAL
GENERAL
TAX REG.
PICTURED

State of Nebraska, Scotts Bluff County ss.
Entered in Numerical Index and filed for
record the 4 day of December, 1975
at 12:15 o'clock P. M., and recorded in
Book 148 of Deeds
on page 694
Mary J. Ellis
Register of Deeds
By Opal J. Clark Deputy