

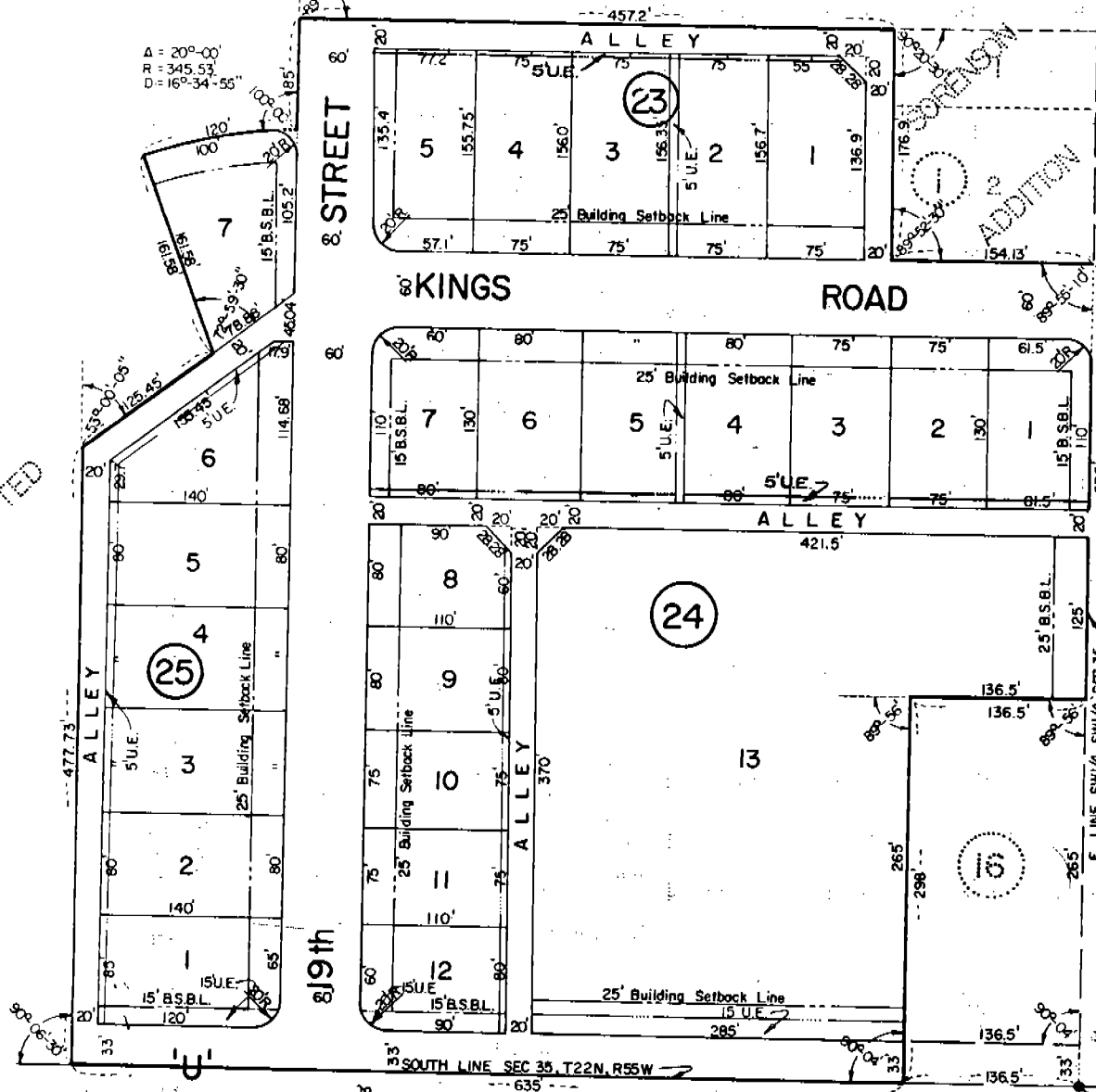
NORTHFIELD FIRST ADDITION

LOTS 1-5, BLOCK 23; LOTS 1-13, BLOCK 24; LOTS 1-7, BLOCK 25, SITUATED IN THE SW1/4, SW1/4, SECTION 35, T22N, R55W OF THE 6th P.M. AN ADDITION TO THE CITY OF GERING, NEBRASKA.

5144

A = 20°-00'
R = 345.53'
D = 16°-34'-55"

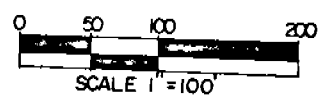
UNPLATTED



NORTHFIELD

FIRST

ADDITION

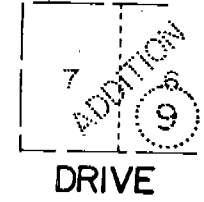
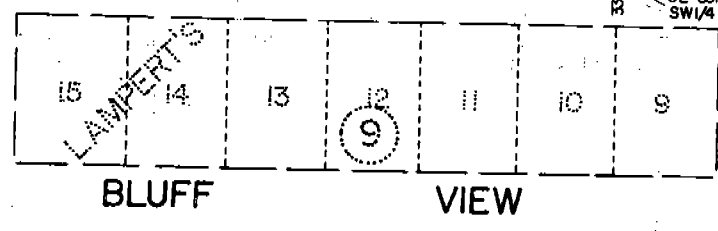
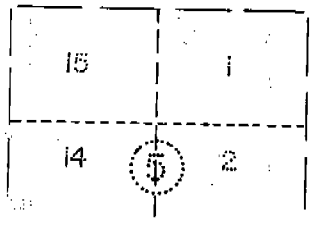


STREET

20th ST.

19th ST.

17th ST.



BLUFF

VIEW

DRIVE

LAMPERT'S

SE CORNER SW1/4, SW1/4

SOUTH LINE, SEC 35, T22N, R55W

5144

SURVEYOR'S CERTIFICATE

I, Ronald L. Vogel, a competent surveyor of Scotts Bluff County, Nebraska, hereby certify that I have surveyed a part of the Southwest Quarter of the Southwest Quarter (SW $\frac{1}{4}$ SW $\frac{1}{4}$) of Section Thirty-five (35), Township Twenty-two (22) North, Range Fifty-five (55) West of the 6th P.M., Scotts Bluff County, Nebraska, the boundary of such tract is more particularly described as follows:

Beginning at a point on the South Line of such SW $\frac{1}{4}$ SW $\frac{1}{4}$, such point being 136.5 feet West of the Southeast corner of such SW $\frac{1}{4}$ SW $\frac{1}{4}$; then West on the South Line of such SW $\frac{1}{4}$ SW $\frac{1}{4}$, a distance of 635.0 feet; then a deflection angle to the right of 90 degrees-06 minutes-30 seconds, a distance of 477.73 feet; then a deflection angle to the right of 53 degrees-00 minutes-05 seconds, a distance of 125.45 feet; then a deflection angle to the left of 72 degrees-59 minutes-30 seconds, a distance of 161.58 feet, to a point on a 16 degree-34 minute-55 second curve to the right; then along such curve, initial tangent of which is perpendicular to the line last described, a distance of 120.0 feet to the termination of such curve; then North, perpendicular to such curve, a distance of 85.0 feet; then a deflection angle to the right of 89 degrees-48 minutes-30 seconds, a distance of 457.2 feet to the West Line of Block One, Sorensen Addition, as platted; then a deflection angle to the right of 90 degrees-20 minutes-30 seconds, along the West line of Sorensen Addition, a distance of 167.9 feet; then a deflection angle to the left of 90 degrees-07 minutes-30 seconds, a distance of 154.13 feet to the East Line of such SW $\frac{1}{4}$ SW $\frac{1}{4}$; then South on such East Line of the SW $\frac{1}{4}$ SW $\frac{1}{4}$, a distance of 335.0 feet; then a deflection angle to the right of 89 degrees-56 minutes-00 seconds, a distance of 136.5 feet; then a deflection angle to the left of 89 degrees-56 minutes-00 seconds, a distance of 298.0 feet to the point of beginning, containing an area of 13.69 acres, more or less.

That I have further surveyed and subdivided such land as above described as "Northfield First Addition", Lots 1-5, Block 23; Lots 1-13, Block 24; Lots 1-7, Block 25, including parts of streets and alleys therein. That the accompanying plat is a true delineation of such survey and subdivision, drawn to a scale of 100 feet to the inch. That all corners are marked with 3/4" x 18" iron rods and that all dimensions are in feet and decimals. That each lot and block bears its own number. That the boundary of the land subdivided is shown on the plat with a heavy solid line and that adjoining lands are shown dashed for orientation purposes.

WITNESS MY HAND AND SEAL this 4th day of November, 1975.



Ronald L. Vogel
RONALD L. VOGEL
NEBRASKA REGISTERED LAND SURVEYOR
L.S. 266

Northfield First Addition
Part of Blocks 23, 24 & 25
Sheet 3 of 3

5144


DEDICATION AND ANNEXATION

The undersigned, being the owners of that part of the SW 1/4 SW 1/4 of Section Thirty-five (35), Township Twenty-two (22) North, Range Fifty-five (55) West of the 6th P.M., Scotts Bluff County, Nebraska, as described in the foregoing "Surveyor's Certificate" and shown by the accompanying plat, have caused such real estate to be surveyed and plotted as "Northfield First Addition", Lots 1-5, Block 23; Lots 1-13, Block 24; Lots 1-7, Block 25, an Addition to the City of Gering, Nebraska.

We hereby dedicate the streets, alleys and easements and designate the building setback lines shown on and referred to in the plat, to the use and benefit of the public, and further annex and make such real estate a part of the City of Gering, Nebraska.

The above described and foregoing subdivision and the Streets, Alleys, Easements and Building Setback Designations is made with the free consent and in accordance with the desires of the undersigned owners.

Dated this 10 day of November, 1975.

Attest: [Signature]
Secretary


DOMI DEVELOPMENT COMPANY, INC.

By: William C. Davis
William C. Davis, President

Kathryn S. Williams
Kathryn S. Williams

Dayle A. Williams
Dayle A. Williams

ACKNOWLEDGEMENT

State of Nebraska)
) ss
Scotts Bluff County)

Before me, a Notary Public, qualified in such County, personally came William C. Davis, President of Dome Development Company, Inc., a Nebraska Corporation, and Kathryn S. and Dayle A. Williams, husband and wife, to me know to be the identical persons and President of such corporation who signed the foregoing "Dedication and Annexation" and acknowledged the execution thereof to be their voluntary act and deed and the voluntary act and deed of such corporation.

WITNESS MY HAND AND NOTARIAL SEAL this 10th day of November, 1975.

My commission expires: January 25, 1977
Notary Public [Signature]

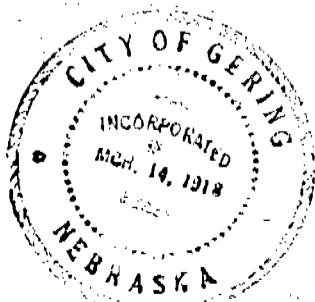
APPROVAL AND ACCEPTANCE

The foregoing plat of "Northfield First Addition" approved and accepted by the Mayor and City Council of the City of Gering, Nebraska, by Ordinance No. 319, duly passed this 10th day of November, 1975.

Attest: [Signature]
City Clerk

[Signature]
Mayor

NUMERICAL
GENERAL
TAX REC.
PICTURED



State of Nebraska, Scotts Bluff County ss.
Entered in Numerical Index and filed for
record the 4 day of December, 1975
at 12:10 o'clock P. M., and recorded in
Book 148 of Deeds
on page 691
[Signature]
Register of Deeds
By [Signature] Deputy