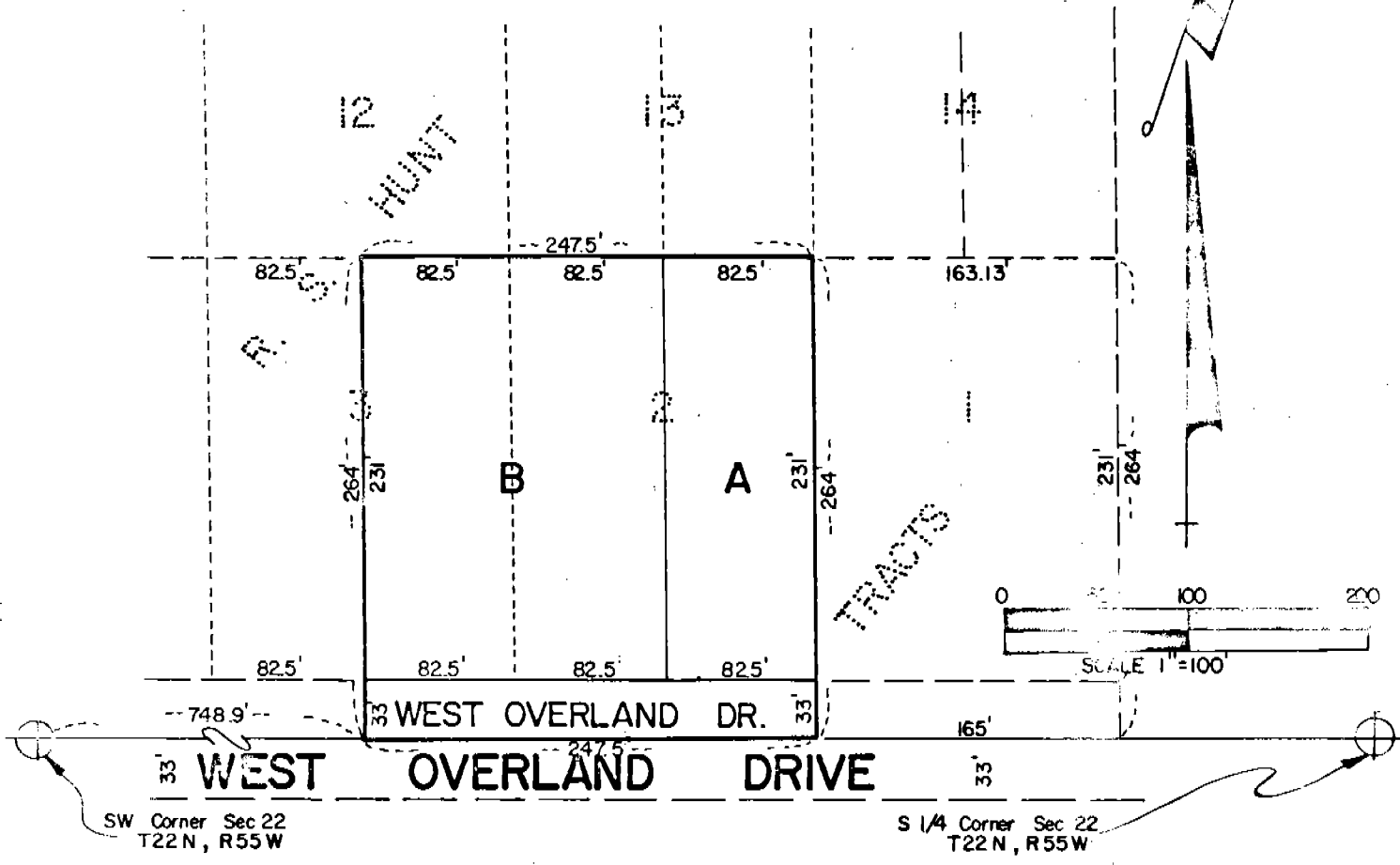


AMENDED

CRIST SUBDIVISION

OF TRACT 2 and THE E 1/2 OF TRACT 3, R.S. HUNT TRACTS
SITUATED IN THE SW 1/4 SEC. 22, T22N, R55W OF THE
6th P.M. SCOTTS BLUFF COUNTY, NEBRASKA.



SURVEYOR'S CERTIFICATE

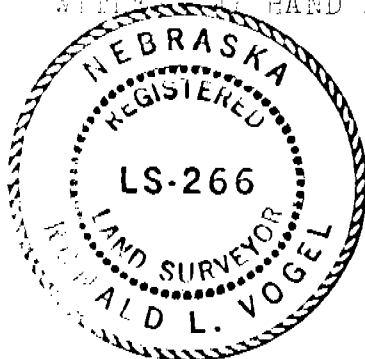
I, Ronald L. Vogel, a competent surveyor of Scotts Bluff County, Nebraska, hereby certify that I have surveyed Tract Two (2) and the East half of Tract Three (3), R.S. Hunt Tracts, according to the records thereof, situated in the SW 1/4 of Section 22, Township 22 North, Range 55 West of the 6th P.M., Scotts Bluff County, Nebraska, and have thereupon subdivided and prepared a plat of "Amended Crist Subdivision", the purpose of such amended plat to correct lot number designations and to properly reflect the owners at the time the original "Crist Subdivision" was filed.

That such subdivision contains Lots A and B and comprises an area of 1.5 acres, more or less.

That the accompanying plat is a true delineation of such survey, drawn to a scale of 100 feet to the inch.

That all corners are marked with 3/4" x 18" iron rods, that all dimensions are in feet and decimals and that each lot bears its own letter. That the boundary of the subdivision is shown on the plat with a heavy solid line and adjoining lot lines are shown dashed for orientation purposes.

WITNESS MY HAND AND SEAL this 14th day of June, 1975.



Ronald L. Vogel
 RONALD L. VOGEL
 Nebraska Registered Land Surveyor
 L.S. 266

DEDICATION

5110

We, the undersigned, being the owners of Tract Two (2) and the East Half of Tract Three (3), R.S. Hunt Tracts, according to the recorded plat thereof, have caused such real estate to be surveyed and platted as "Amended Crist Subdivision" Lots A and B, as shown by the accompanying plat and foregoing "Surveyor's Certificate".

The foregoing subdivision and the Streets as appear on the plat is made with the free consent and in accordance with the desires of the undersigned owners, and supercedes the previous "Crist Subdivision" plat.

We hereby dedicate the South 33 feet of such land (West Overland Drive) to the use and benefit of the public.

Dated this 14th day of June, 1975.

Vurdie R. Crist
Vurdie R. Crist

Gloria J. Crist
Gloria J. Crist

Leo Winterer
Leo Winterer

Stella D. Winterer
Stella D. Winterer

ACKNOWLEDGEMENT

State of Nebraska)
) ss
Scotts Bluff County)

Before me a Notary Public, qualified in such County, came Vurdie R. Crist and Gloria J. Crist, husband and wife, and Leo Winterer and Stella D. Winterer, husband and wife, to me known to be the identical persons who signed the foregoing "Dedication" and acknowledged the execution thereof to be their voluntary act and deed.

WITNESS MY HAND AND NOTARIAL SEAL this 14th day of June, 1975.



Bert G. Johnson
Notary Public

My Commission Expires May 5, 1979

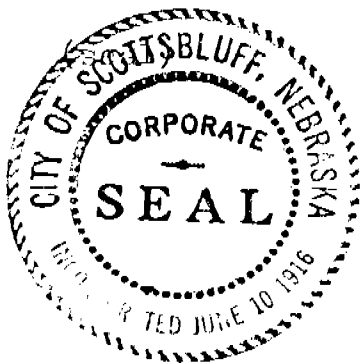
APPROVAL AND ACCEPTANCE

The foregoing "Amended Crist Subdivision" approved by the Mayor and City Council of the City of Scottsbluff, Nebraska by resolution duly passed this 24th day of November, 1975.

Attest: H. L. Ferguson
City Clerk

Donald E. Quinner
Mayor

NUMERICAL INDEX
GENERAL INDEX
TAX MAP
RECORDED



State of Nebraska, Scotts Bluff County ss.
Entered in Numerical Index and filed for record the 2 day of December, 1975 at 1:15 o'clock P. M. and recorded in Book 148 of Deeds on page 671.
Mary Jo Ellis
Register of Deeds
By April J. Clark Deputy