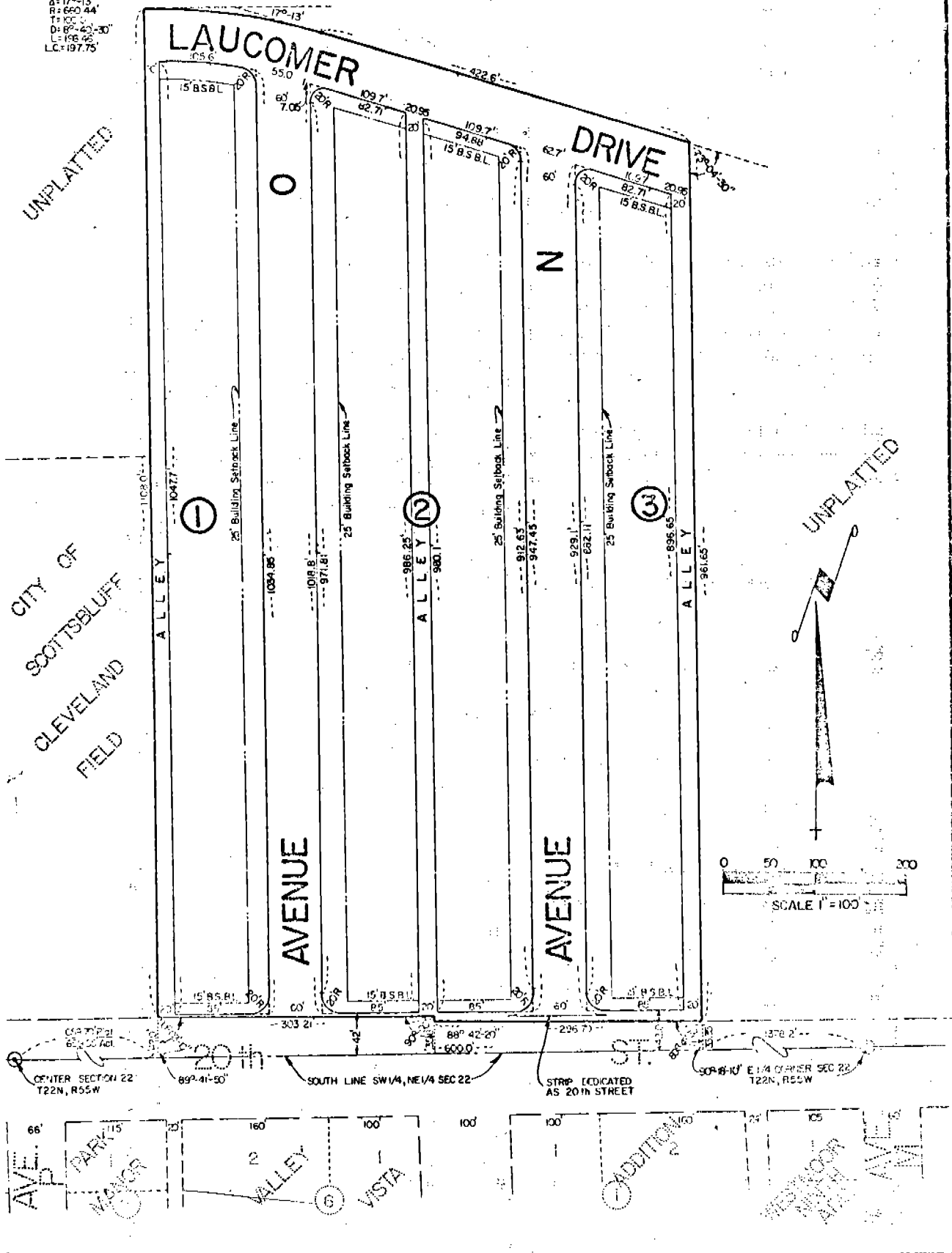


# LAUCOMER ADDITION

## BLOCKS 1, 2 & 3

A SUBDIVISION OF PART OF THE SW1/4, NE1/4 SECTION 22,  
T22N, R55W OF THE 6th P.M., SCOTTS BLUFF COUNTY, NEBR.  
AN ADDITION TO THE CITY OF SCOTTSBLUFF, NEBRASKA.

A: 17°-13'  
B: 660.44'  
C: 100'  
D: 87°-40'-30"  
E: 198.46'  
LC: 197.75'



NOTE: Now Known AS Bitner Warner Subdiv.  
See Deed BK. 148-694

SURVEYOR'S CERTIFICATE

I, Ronald L. Vogel, a competent surveyor of Scotts Bluff County, Nebraska, hereby certify that I have surveyed a tract of land situated in the Southwest Quarter of the Northeast Quarter (SW $\frac{1}{4}$ NE $\frac{1}{4}$ ) of Section Twenty-two (22), Township Twenty-two (22) North, Range Fifty-five (55) West of the 6th P.M., Scotts Bluff County, Nebraska, such tract being more particularly described as follows:

With reference to the Southwest corner of such SW $\frac{1}{4}$ NE $\frac{1}{4}$ ; then East on the South Line of such SW $\frac{1}{4}$ NE $\frac{1}{4}$ , a distance of 659.55 feet; then a deflection angle to the left of 89 degrees-41 minutes-50 seconds, a distance of 42.0 feet to the North Line of 20th Street and the point of beginning; then continuing North on the extension of the line last described, and on the East Line of a tract of land owned by the City of Scottsbluff, a distance of 1,108.00 feet to the P.C. of a 8 degree-40 minute-30 second curve to the right, initial tangent of such curve being 89 degrees-41 minutes-50 seconds right from the extension of the line last described, then Easterly along such curve, whose central angle is 17 degree-13 minutes-00 seconds, a distance of 198.46 feet to the termination of such curve; then continuing tangent to such curve, a distance of 422.6 feet; then a deflection angle to the right of 73 degrees-04 minutes-30 seconds, a distance of 961.65 feet to the North Line of 20th Street; then a deflection angle to the right of 89 degrees-47 minutes-30 seconds, along the North Line of 20th Street, a distance of 296.79 feet; then a deflection angle to the right of 90 degrees-00 minutes-00 seconds, a distance of 5.0 feet; then a deflection angle to the left of 90 degrees-00 minutes-00 seconds, a distance of 303.21 feet to the point of beginning, containing an area of 14.4 acres, more or less.

That I have further surveyed and subdivided such land as above described as "Laucomer Addition", Blocks 1, 2 and 3, including parts of streets and alleys therein, an Addition to the City of Scottsbluff, Nebraska. That the accompanying plat is a true delineation of such survey and subdivision, drawn to a scale of 100 feet to the inch. That all block corners are marked with 3/4" x 36" iron rods and all dimensions are in feet and decimals. That each block bears its own number. That the boundary of the land subdivided is shown on the plat with a heavy solid line and that adjoining subdivided lands are shown dashed for orientation purposes.

WITNESS MY HAND AND SEAL this 5th day of November, 1975.



*Ronald L. Vogel*  
 RONALD L. VOGEL  
 NEBRASKA REGISTERED LAND SURVEYOR  
 L.S. 266

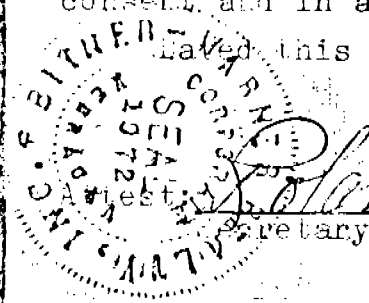
DEDICATION & ANNEXATION

The undersigned, being the owners of that part of the SW<sup>1</sup>/<sub>4</sub>NE<sup>1</sup>/<sub>4</sub> of Section Twenty-two (22), Township Twenty-two (22) North, Range Fifty-five (55) West of the 6th P.M., Scotts Bluff County, Nebraska, as described in the foregoing "Surveyor's Certificate" and shown by the accompanying plat have caused such real estate to be surveyed and platted as "Laucomer Addition". Blocks 1, 2 and 3, an Addition to the City of Scottsbluff, Nebraska.

We hereby dedicate the streets, alleys, and easements, and designate building setback lines shown on and referred to in the plat to the use and benefit of the public, and further annex and make such real estate a part of the City of Scottsbluff, Nebraska.

The above described and foregoing subdivision, and the Streets, Alleys, Easements and the Building Setback Designations is made with the free consent and in accordance with the desire of the undersigned owners.

Dated this 7<sup>th</sup> day of November, 1975.



William S. Bitner  
Secretary

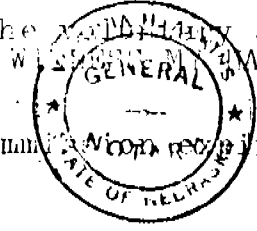
BITNER-WARNER REALTY INC.

By: William S. Bitner  
William S. Bitner, President

ACKNOWLEDGEMENT

State of Nebraska )  
                          ) ss  
Scotts Bluff County )

Before me, a Notary Public, qualified in such County, personally came William S. Bitner, President of Bitner-Warner Realty Inc., a Nebraska Corporation, to me known to be the identical person and President of such corporation, who signed the foregoing "Dedication and Annexation" and acknowledged the execution thereof to be his voluntary act and deed and the voluntary act and deed of such corporation.



AND NOTARIAL SEAL this 7<sup>th</sup> day of November, 1975.

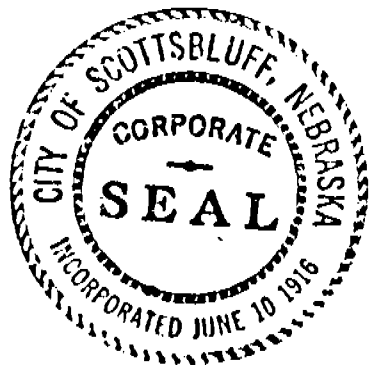
My commission expires: July 1, 1976 Virginia A. Perkins  
Notary Public

APPROVAL AND ACCEPTANCE

The foregoing plat of "Laucomer Addition" to the City of Scottsbluff, Nebraska, Blocks 1, 2 and 3, approved and accepted by the Mayor and City Council of the City of Scottsbluff, Nebraska, by resolution duly passed this 10<sup>th</sup> day of November, 1975.

Attest: D. L. Ferguson  
City Clerk

Donald E. Quammen  
Mayor



State of Nebraska, Scotts Bluff County ss.  
Entered in Numerical Index and filed for  
record the 26<sup>th</sup> day of November 1975  
at 1:20 o'clock P. M., and recorded in  
Book 148 of Deeds  
on page 649  
Mary J. Kellis  
Register of Deeds  
By ..... Deputy

NUMERICAL  
INDEX  
GENERAL  
TAX REC.  
PICTURED