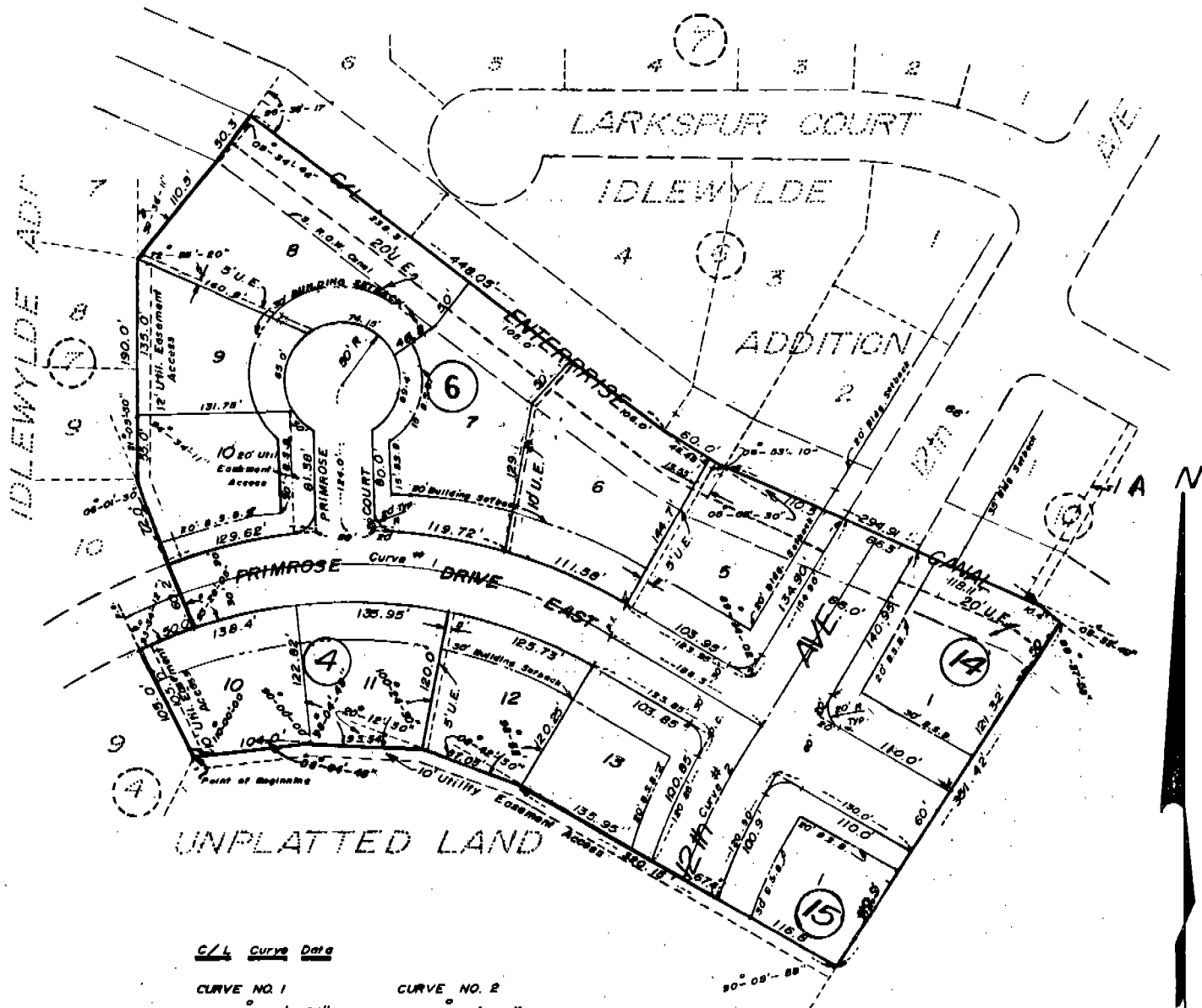


4705

IDLEWYLDE ADDITION

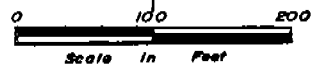
Lots 10 through 13, Block 4, Lots 5 through 10, Block 6, Lot 1, Block 14, and Lot 1, Block 15,
An Addition to the City of Scottsbluff, Nebraska.



UNPLATTED LAND

C/L Curve Data

CURVE NO. 1	CURVE NO. 2
$\Delta = 56^{\circ} - 58' - 50''$	$\Delta = 27^{\circ} - 40' - 50''$
$T = 238.7'$	$T = 143.70'$
$R = 434.25'$	$R = 583.27'$
$D = 15^{\circ} - 11' - 59''$	$D = 09^{\circ} - 49' - 23''$



IDLEWYLDE ADDITION
 LOTS 10 through 13, BLOCK 4
 LOTS 5 THROUGH 10, BLOCK 6
 LOT 1, BLOCK 14 and LOT 1, BLOCK 15

4705

SURVEYOR'S CERTIFICATE

I, M. C. Schaff, a competent surveyor of Scotts Bluff County, Nebraska, hereby certify that I have surveyed and prepared a plat of Idlewylde Addition, Lots Ten (10) through Thirteen (13), Block Four (4); Lots Five (5) through Ten (10), Block Six (6); Lot One (1), Block Fourteen (14), Lot One (1), Block Fifteen (15), an addition to the City of Scottsbluff, Nebraska, situated in the Southwest Quarter (SW $\frac{1}{4}$) of Section Thirteen (13), Township Twenty-Two (22) North, Range Fifty-Five (55) West of the Sixth (6th) Principle Meridian (P.M.), Scotts Bluff County, Nebraska, the boundary of such survey and addition being more particularly described as follows:

Beginning at the eastermost corner of Lot 9, Block 4, Idlewylde Addition, according to the recorded plat thereof; thence, northwesterly along the East Line of such Lot 9, a distance of 105.0 feet to the South Right of Way Line of Primrose Drive; thence, a deflection angle right of 93 degrees 34 minutes 12 seconds, along such Right of Way Line, a distance of 50.0 feet; thence, a deflection angle left of 93 degrees 28 minutes 05 seconds, a distance of 60.2 feet to the Southeast corner of Lot 10, Block 7, Idlewylde Addition; thence, a deflection angle right of 06 degrees 01 minutes 30 seconds, along the East line of such Lot 10, a distance of 72.0 feet to the Southeast corner of Lot 9, Block 7, Idlewylde Addition; thence, a deflection angle right of 21 degrees 05 minutes 50 seconds, along the East line of Lots 8 and 9 of such Block 7, a distance of 190.0 feet to the Southeast corner of Lot 7 of such Block 7; thence, a deflection angle right of 39 degrees 36 minutes 11 seconds, along the East line of such Lot 7, a distance of 110.5 feet to a point on the South Right of Way Line of the Enterprise Irrigation District Canal; thence, a deflection angle left of 09 degrees 34 minutes 48 seconds, a distance of 50.3 feet to the centerline of such Enterprise Irrigation District Canal; thence, a deflection angle right of 96 degrees 36 minutes 17 seconds, along such centerline, a distance of 448.05 feet; thence, a deflection angle left of 06 degrees 53 minutes 10 seconds, along such centerline, a distance of 60.0 feet; thence, a deflection angle left of 05 degrees 05 minutes 30 seconds, along such centerline, a distance of 294.91 feet; thence, a deflection angle right of 05 degrees 32 minutes 49 seconds, a distance of 10.4 feet; thence, a deflection angle right of 89 degrees 27 minutes 58 seconds, a distance of 351.42 feet; thence, a deflection angle right of 90 degrees 05 minutes 58 seconds, a distance of 320.15 feet; thence, a deflection angle left of 08 degrees 42 minutes 30 seconds, a distance of 87.05 feet; thence, a deflection angle left of 20 degrees 12 minutes 30 seconds, a distance of 93.54 feet; thence, a deflection angle left of 08 degrees 04 minutes 45 seconds, a distance of 104.0 feet to the point of beginning, containing an area of 6.52 acres, more or less.

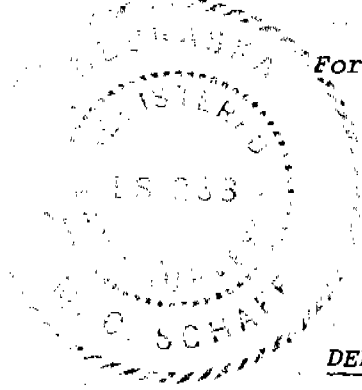
IDLEWYLDE ADDITION
 LOTS 10 through 13, BLOCK 4
 LOTS 5 through 10, BLOCK 6
 LOT 1, BLOCK 14 and LOT 1, BLOCK 15

4705

That the above described tract contains Lots 10 through 13, Block 4; Lots 5 through 10, Block 6; Lot 1, Block 14; Lot 1, Block 15 and portions of Primrose Drive and 12th Avenue and Primrose Court, platted as part of this subdivision. That the accompanying plat is a true delineation of such survey and subdivision drawn to a scale of 100 feet to the inch. That all corners are marked with 3/4" x 18" iron rods with the exception of Block corners which are marked with 3/4" x 36" iron rods. That all dimensions are in feet and decimals and all Lots and Blocks bear their own number. That the boundary of the subdivision is shown on the plat with a heavy solid line.

WITNESS MY HAND AND SEAL this 4 day of September, 1975.

For the Firm of M. C. SCHAFF & ASSOCIATES, INC.



M. C. Schaff
 M. C. Schaff, Nebraska Registered
 Land Surveyor, L. S. 233

DEDICATION AND ANNEXATION

We, the undersigned, being the Owners of that part of the Southwest Quarter of Section 13, Township 22 North, Range 55 West of the 6th P.M., Scotts Bluff County, Nebraska, as shown and described in the foregoing plat and "Surveyor's Certificate", have caused such real estate to be surveyed and platted as part of Idlewylde Addition, an Addition to the City of Scottsbluff, Nebraska, as shown on the accompanying plat.

The foregoing Subdivision of Idlewylde Addition and the Avenues, Drives, Courts, Utility Easement Accesses and Building Setback Designations shown on the plat is made with the free consent and in accordance with the desires of the undersigned Owners.

We hereby dedicate the Avenues, Drives and Courts and Utility Easement Accesses designated upon and referred to in the accompanying plat to the use and benefit of the public and further annex and make such real estate a part of the City of Scottsbluff, Nebraska.

Dated this 4 day of September, 1975



MAXWELL, INCORPORATED
 A Nebraska Corporation

Melvin L. Maxwell
 Melvin L. Maxwell
 President

IDLEWYLDE ADDITION
LOTS 10 through 13, BLOCK 4
LOTS 5 through 10, BLOCK 6
LOT 1, BLOCK 14 and LOT 1, BLOCK 15

4705

ACKNOWLEDGEMENT

STATE OF NEBRASKA)
SCOTTS BLUFF COUNTY) SS

Before me, a Notary Public, qualified in said County, personally came Melvin L. Maxwell, President of Maxwell, Inc., a Nebraska Corporation known to me to be the identical person and President of such Corporation, who signed the foregoing "Dedication and Annexation" and acknowledged the execution thereof to be his voluntary act and deed and the voluntary act and deed of such corporation, and that his Corporate Seal was thereto affixed by its authority.



HAND AND NOTARIAL SEAL this 4th day of September, 1975.

Bonnie L. Smith
Notary Public

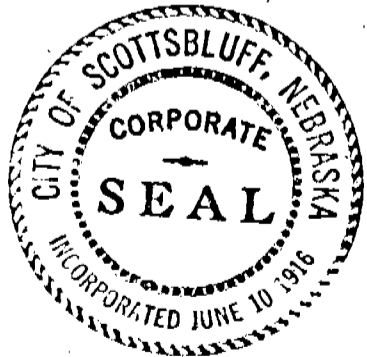
My commission expires: 6-13-76

APPROVAL AND ACCEPTANCE

The foregoing plat of Idlewylde Addition, hereby approved by the Mayor and City Council of the City of Scottsbluff, Nebraska, by resolution duly passed this 22nd day of September, 1975.

Donald E. Overman
Mayor

ATTEST:
H. L. Ferguson
City Clerk



State of Nebraska, Scotts Bluff County ss.	NUMERICAL GENERAL TAX REG. PICTURED
Entered in Numerical Index and filed for	
record the 7 day of November, 1975	
at 2:05 o'clock P. M., and recorded in	
Book 148 of Deeds	
on page 484	
<u>Mary Jo Kallis</u> Register of Deeds	
By _____ Deputy	