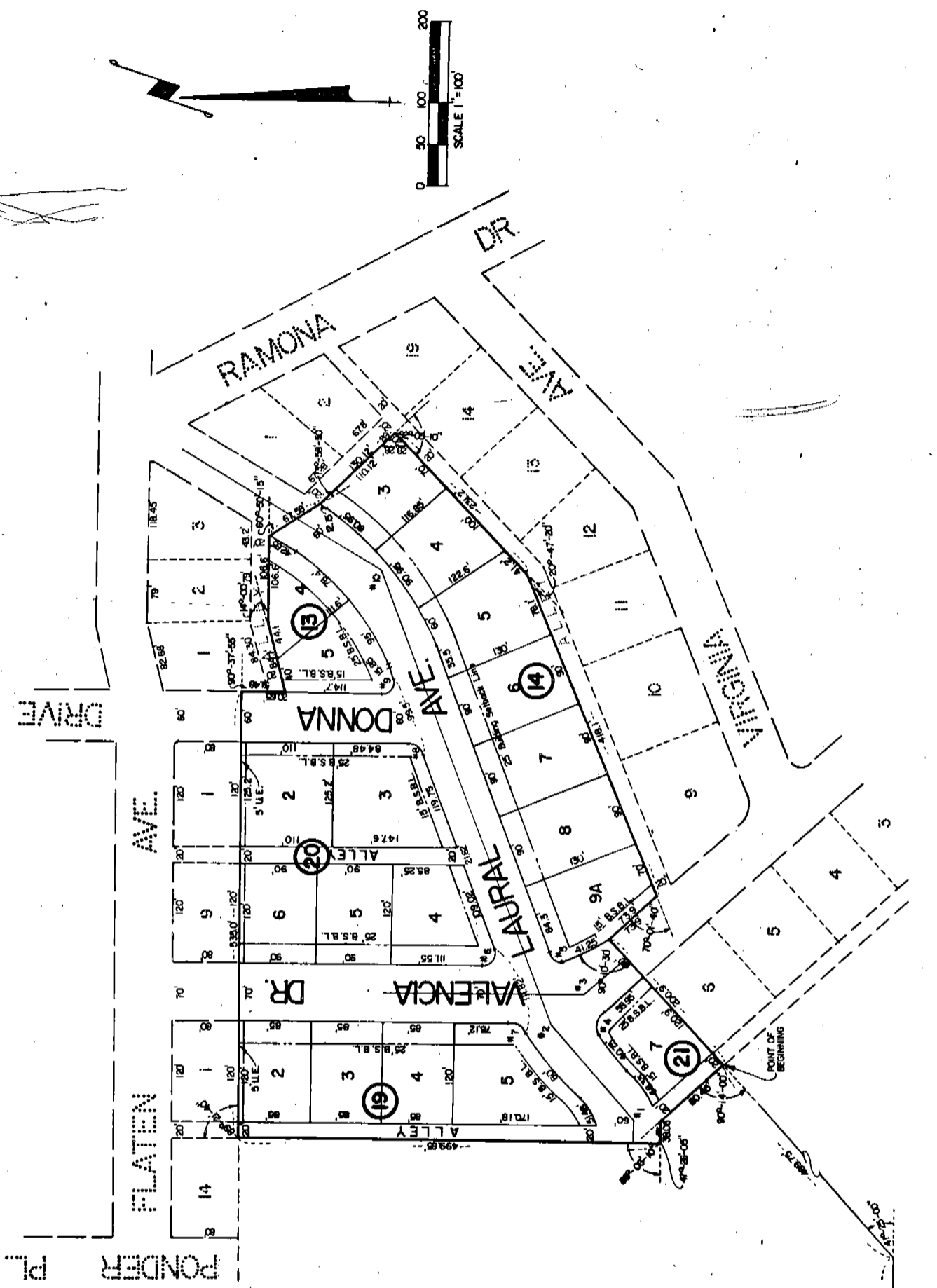


NORTHFIELD FIRST ADDITION 4690

LOTS 4 & 5, BLOCK 13; LOTS 3 thru 8 & 9A, BLOCK 14; LOTS 2 thru 5, BLOCK 19; LOTS 2 thru 6; BLOCK 20 and LOT 7, BLOCK 21, AN ADDITION TO THE CITY OF GERING, NEBRASKA, SITUATED ON PART OF THE W1/2 OF SECTION 35, T22N, R55W OF THE 6th P.M., SCOTTS BLUFF COUNTY, NEBRASKA.



CURVE DATA

NO. 1 A = 42°-35'-30" T = 75.67' R = 194.13'	NO. 6 A = 111°-42'-20" T = 20' R = 15.57'
NO. 2 A = 20°-01'-30" T = 75.67' R = 428.60'	NO. 7 A = 57°-03'-40" T = 14.85' R = 27.32'
NO. 3 A = 41°-45'-00" T = 65.05' R = 170.57'	NO. 8 A = 68°-15'-20" T = 15' R = 22.13'
NO. 4 A = 85°-50'-00" T = 16.73' R = 20.3'	NO. 9 A = 68°-12'-00" T = 20' R = 28.54'
NO. 5 A = 113°-07'-40" T = 20.25' R = 13.37'	NO. 10 A = 36°-15'-30" T = 100' R = 305.42'

SW CORNER NW1/4, SEC. 35, T22N, R55W

SURVEYOR'S CERTIFICATE

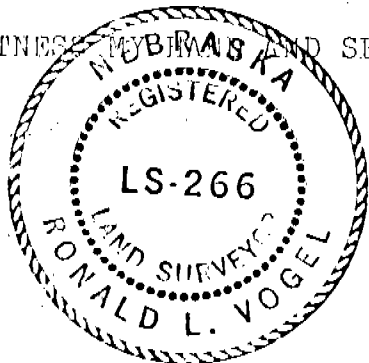
I, Ronald L. Vogel, a competent surveyor of Scotts Bluff County, Nebraska, hereby certify that I have surveyed a part of the West Half of Section Thirty-five (35), Township Twenty-two (22) North, Range Fifty-five (55) West of the 6th P.M., Scotts Bluff County, Nebraska, the boundary of such tract being more particularly described as follows:

With reference to the Southwest corner of such NW $\frac{1}{4}$ of Section 35, then South on the West Line of such Section 35 a distance of 720.6 feet; then a deflection angle to the left of 90 degrees-43 minutes-10 seconds, a distance of 192.45 feet; then a deflection angle to the left of 41 degrees-25 minutes-00 seconds, a distance of 489.75 feet to the Northerly corner of Lot 8, Block 21, Northfield Addition and the point of beginning; then a deflection angle to the left of 137 degrees-51 minutes-15 seconds, a distance of 38.05 feet; then a deflection angle to the right of 89 degrees-05 minutes-10 seconds, a distance of 499.65 feet to the Southeast corner of Lot 14, Block 19, Northfield First Addition, then a deflection angle to the right of 89 degrees-21 minutes-40 seconds, a distance of 535.0 feet to a point on the East Line of Donna Drive; then a deflection angle to the right of 90 degrees-37 minutes-55 seconds, a distance of 51.48 feet to the South Line of a platted alley; then a deflection angle to the left of 105 degrees-18 minutes-40 seconds, a distance of 84.1 feet; then a deflection angle to the right of 14 degrees-00 minutes-00 seconds, a distance of 106.6 feet; then a deflection angle to the right of 60 degrees-50 minutes-15 seconds, a distance of 67.58 feet; then a deflection angle to the left of 13 degrees-58 minutes-50 seconds, a distance of 130.12 feet; then a deflection angle to the right of 92 degrees-10 minutes-00 seconds, a distance of 231.05 feet; then a deflection angle to the right of 20 degrees-47 minutes-20 seconds, a distance of 418.10 feet; then a deflection angle to the right of 70 degrees-01 minutes-40 seconds, a distance of 73.9 feet; then a deflection angle to the left of 90 degrees-10 minutes-30 seconds, a distance of 200.9 feet; then a deflection angle to the right of 90 degrees-14 minutes-00 seconds, a distance of 80.45 feet to the point of beginning, containing an area of 7.70 acres, more or less.

That I have further surveyed and subdivided such land as above described as "Northfield First Addition" Lots 4 and 5, Block 13; Lots 3 through 8 and 9A, Block 14; Lots 2, 3, 4 and 5, Block 19; Lots 2 through 6, Block 20 and Lot 7, Block 21, including parts of streets and alleys therein.

That the accompanying plat is a true delineation of such survey and subdivision drawn to a scale of 100 feet to the inch. That all corners are marked with 3/4" x 18" iron rods and that all dimensions are in feet and decimals. That each lot and block bears its own number. That the boundary of the land subdivided is shown on the plat with a heavy solid line and that adjoining lands are shown dashed for orientation purposes.

WITNESS MY HAND AND SEAL this 5th day of August, 1975.



Ronald L. Vogel
 RONALD L. VOGEL
 Nebraska Registered Land Surveyor
 L.S. 266

DEDICATION AND ANNEXATION

The undersigned, being the owners of that part of the West Half of Section 35, Township 22 North, Range 55 West of the 6th P.M., Scotts Bluff County, Nebraska, as described in the foregoing "Surveyor's Certificate" and shown by the accompanying plat have caused such real estate to be surveyed and platted as "Northfield First Addition", Lots 4 and 5, Block 13; Lots 3 through 8 and 9A, Block 14; Lots 2, 3, 4 and 5, Block 19; Lots 2 through 6, Block 20 and Lot 7, Block 21, an addition to the City of Gering, Nebraska.

We hereby dedicate the streets, alley, and easements and designate the building setback lines shown on and referred to in the plat to the use and benefit of the public and further annex and make such real estate a part of the City of Gering, Nebraska.

The above described and foregoing subdivision and the Streets, Alleys, Easements and Building Setback Designations is made with the free consent and in accordance with the desires of the undersigned owners.

Dated this 11th day of August, 1975.

DOME DEVELOPMENT COMPANY, INC.

Attest: Richard J. Brown
Secretary

By: William C. Davis
William C. Davis, President

ACKNOWLEDGEMENT

State of Nebraska)
) ss
Scotts Bluff County)

Before me, a Notary Public, qualified in such County, personally came William C. Davis, President of Dome Development Company, Inc., a Nebraska Corporation, to me known to be the identical person and President of such corporation who signed the foregoing "Dedication and Annexation" and acknowledged the execution thereof to be his voluntary act and deed and the voluntary act and deed of such corporation.

WITNESS MY HAND AND NOTARIAL SEAL this 11th day of August, 1975.



BARBARA A. VOGEL
General Notary-State of Nebr.
My Commission Expires
May 17, 1978

Barbara A. Vogel
Notary Public

My commission expires _____

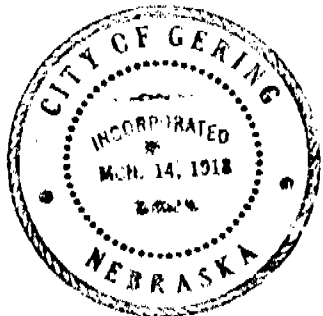
APPROVAL AND ACCEPTANCE

The foregoing plat of Northfield First Addition approved and accepted by the Mayor and City Council of the City of Gering, Nebraska, by Ordinance No. 907, duly passed this 27th day of October, 1975.

John McCallan Jr.
Mayor

Attest: Richard J. Brown
City Clerk

NUMERICAL
GENERAL
TAX REG.
PICTURED



State of Nebraska, Scotts Bluff County ss.
Entered in Numerical Index and filed for
record the 6 day of November, 1975
at 3:57 o'clock P. M., and recorded in
Book 148 of Deeds
on page 476
Mary Jo Koller
Register of Deeds
By _____ Deputy