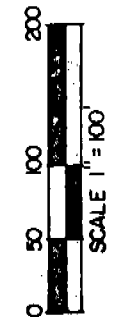
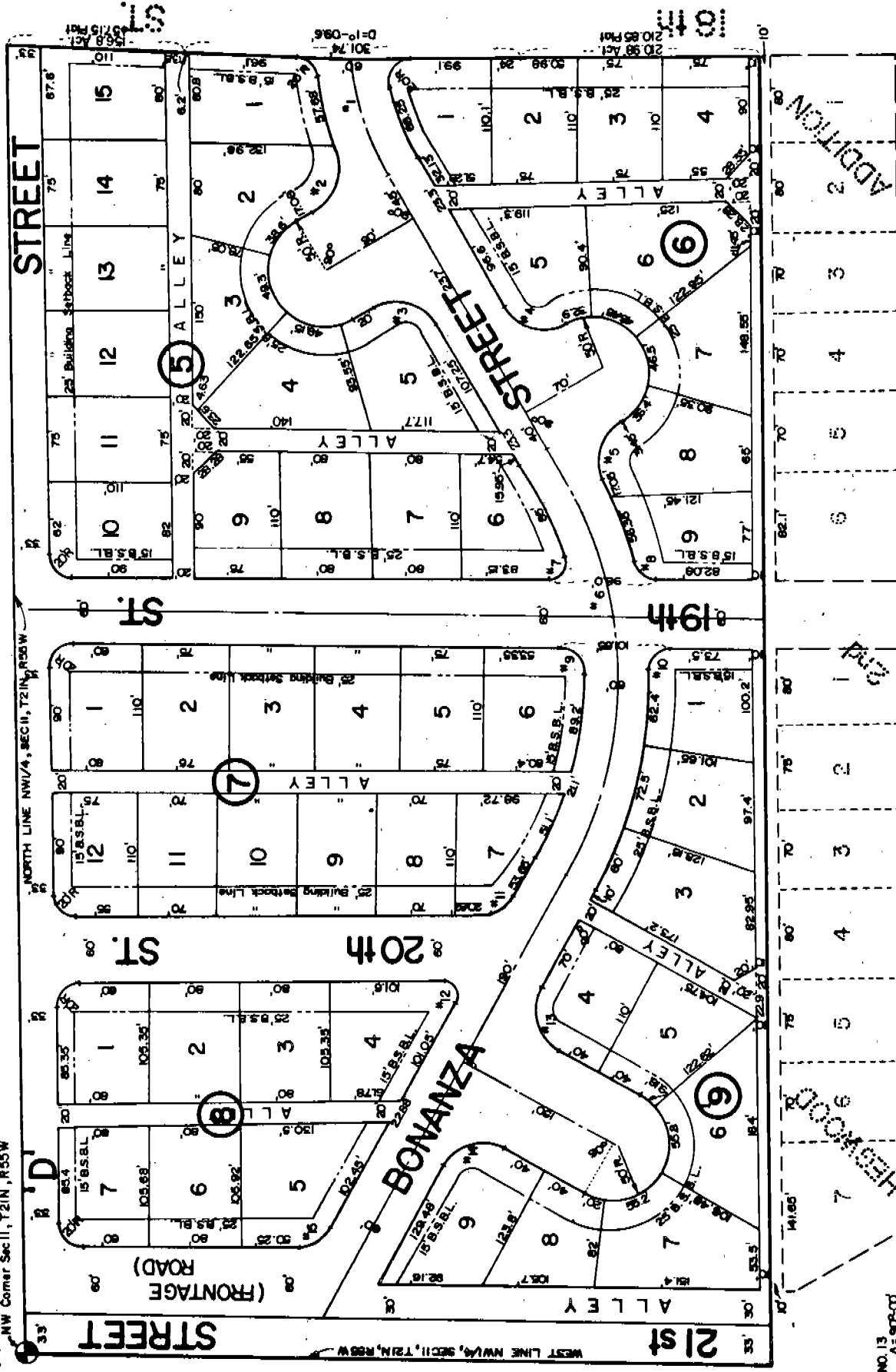


CONESTOGA PARK 4688

BLOCKS 5, 6, 7, 8 & 9, AN ADDITION TO THE CITY OF GERING, NEBRASKA
 A SUBDIVISION OF PART OF THE N1/2, NW1/4, SECTION 11, T21N, R55W



CURVE DATA

NO.	A	T	R	LC
NO. 1	39°-20'	70'	233.82'	
NO. 2	80°-20'	40.4'	47.92'	81.2'
NO. 3	30°-00'	40'	40'	56.6'
NO. 4	90°-00'	40'	40'	56.6'
NO. 5	60°-21'-40"	35.15'	39.46'	92.91'
NO. 6	60°-35'	210'	396.46'	
NO. 7	00°-36'-40"	191.1'	14.1'	
NO. 8	76°-34'-20"	18.15'	25'	
NO. 9	86°-27'-10"	19.82'	20.21'	
NO. 10	90°-43'-10"	22'	21.35'	
NO. 11	60°-09'-20"	20'	34.54'	
NO. 12	119°-51'-40"	20'	11.5'	
NO. 13	90°-00'	40'	40'	56.6'
NO. 14	90°-00'	40'	40'	56.6'
NO. 15	60°-15'-30"	20'	34.46'	

ADDITION

Plus

HEBROOD

I, Ronald L. Vogel, a competent surveyor of Scotts Bluff County, Nebraska, hereby certify that I have surveyed a tract of land situated in the Northwest Quarter of the Northwest Quarter (NW $\frac{1}{4}$ NW $\frac{1}{4}$) of Section Eleven (11), Township Twenty-one (21) North, Range Fifty-five (55) West of the 6th P.M., Scotts Bluff County, Nebraska, the boundary of such tract being more particularly described as follows:

Beginning at the Northwest corner of such NW $\frac{1}{4}$ NW $\frac{1}{4}$, then East on the North Line of such NW $\frac{1}{4}$ NW $\frac{1}{4}$ to the West Line of 19th Street, as platted in Conestoga Park, according to the recorded plat thereof; then South on the West Line of 19th Street to the North Line of the alley as platted on the North side of Hegwood Second Addition, according to the recorded plat thereof; then West on the North Line of such alley to the West Line of the NW $\frac{1}{4}$ NW $\frac{1}{4}$; then North on the West Line of such NW $\frac{1}{4}$ NW $\frac{1}{4}$ to the point of beginning, containing an area of 17.45 acres, more or less.

That I have further subdivided such land as above described as "Conestoga Park", Blocks 5, 6, 7, 8 and 9, including streets and alleys therein.

That the accompanying plat is a true delineation of such survey and subdivision drawn to a scale of 100 feet to the inch. That all corners are marked with 3/4" x 18" iron rods and that all dimensions are in feet and decimals.

That each lot and block bears its own number. That the boundary of the subdivision is shown on the plat with a heavy solid line and adjoining platted lands are shown in dashed lines for orientation purposes.

WITNESS MY HAND AND SEAL THIS 2nd day of September, 1975.



Ronald L. Vogel
 RONALD L. VOGEL
 Nebraska Registered Land Surveyor
 L.S. 266

DEDICATION AND ANNEXATION

The undersigned, being the owners of that part of the NW¹/₄NW¹/₄ of Section 11, Township 21 North, Range 55 West of the 6th P.M., Scotts Bluff County, Nebraska, as described in the foregoing "Surveyor's Certificate" and shown by the accompanying plat have caused such real estate to be surveyed and platted as "Conestoga Park" Blocks 5, 6, 7, 8 and 9, an addition to the City of Gering, Nebraska.

We hereby dedicate the streets, alleys and easements shown on and referred to in the plat to the use and benefit of the public and further annex and make such real estate a part of the City of Gering, Nebraska.

The above described and foregoing subdivision and the Streets, Alley, Easements and Building Setback designations are made with the free consent and in accordance with the desires of the undersigned owners.

Dated the 3rd day of September, 1975.

Panhandle Development Inc.

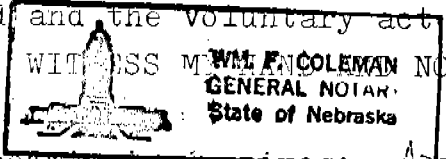
Attest: John H. Hackman
Secretary

By H.O. Jones
H.O. Jones, President

ACKNOWLEDGEMENT

State of Nebraska)
Scotts Bluff County) ss

Before me, a Notary Public, qualified in such County, personally came H.O. Jones, President of Panhandle Development Inc., a Nebraska corporation, to me known to be the identical person and President of such corporation who signed the foregoing "Dedication and Annexation" and acknowledged the execution thereof to be his voluntary act and deed and the voluntary act and deed of such corporation.



NOTARIAL SEAL this 3RD day of September, 1975.

My commission expires: April 7, 1979

William F. Coleman
Notary Public

APPROVAL AND ACCEPTANCE

The foregoing plat of Conestoga Park approved and accepted by the Mayor and City Council of the City of Gering, Nebraska, by Ordinance No. 906, duly passed this 22 day of September, 1975.

John McCallum
Mayor

Attest: Richard Brown
City Clerk

NUMERICAL
GENERAL
TAX REG.
PICTURED



State of Nebraska, Scotts Bluff County ss.
Entered in Numerical Index and filed for record the 6 day of November, 1975
at 3:55 o'clock P. M., and recorded in Book 148 of Deeds
on page 472
Mary Jo Kellie
Register of Deeds
By Deputy