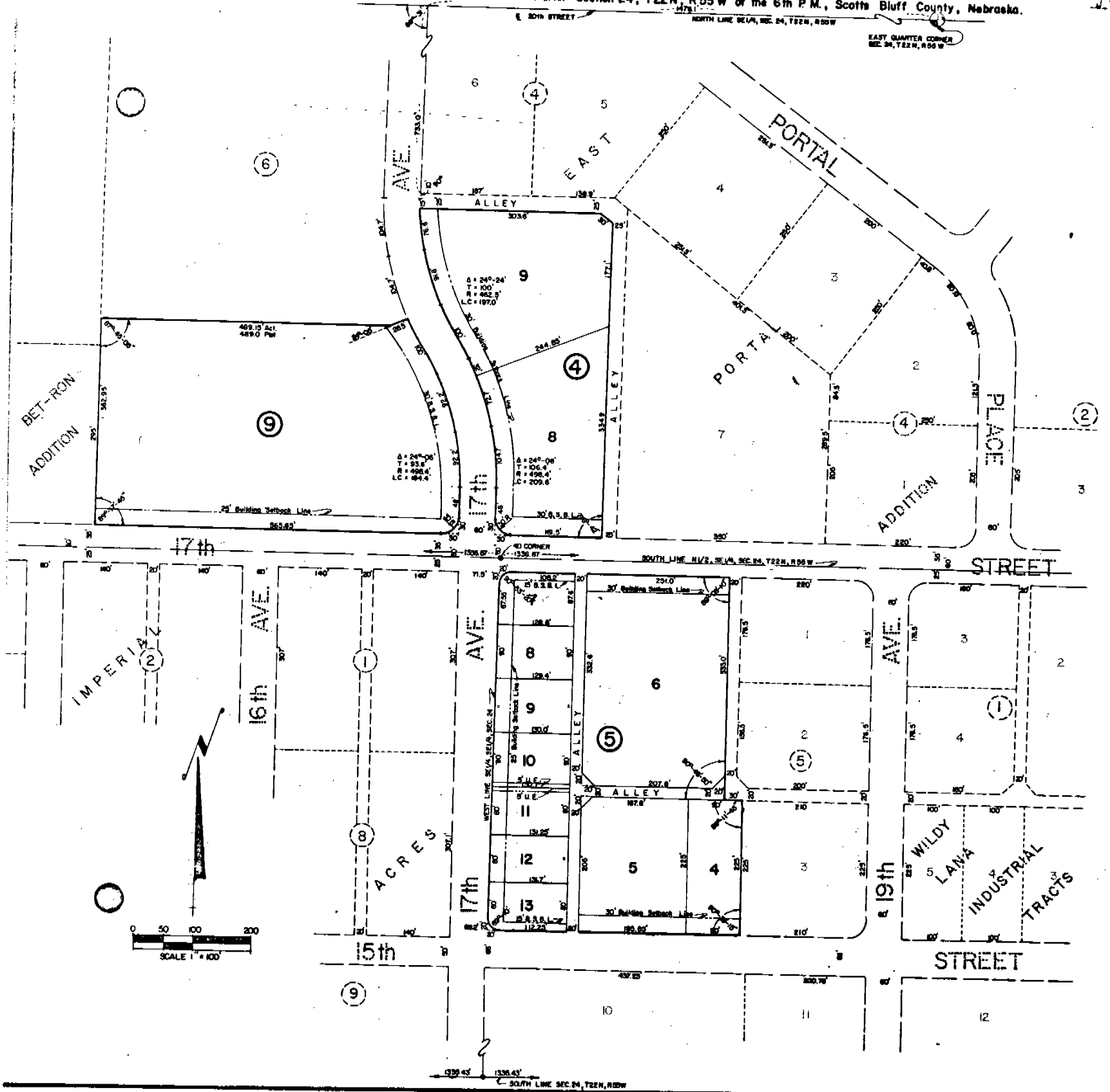


# EAST PORTAL ADDITION 4025

TO THE CITY OF SCOTTSBLUFF, NEBRASKA  
 Lots 8 & 9, Block 4; Lots 4 thru 13, Block 5 and Block 9. Situated in the Southeast Quarter Section 24, T22N, R55W of the 6th P.M., Scotts Bluff County, Nebraska.



- Note: See Afd of Correction on Surveyor's Cfy Book Misc 95 - Pg 301
- Note: See Replat 158-224-REPLAT of LOTS 7-13 Incl. Bk 5. + Pt. Vacated 17th Ave East Portal Add.
- Note: See Ord & Ctf 96-74 Cfd #2377 Vac PT. 17th ST. Subj to Replat
- Note: See Replat 164-22 Subdiv of Lot 6, Block 5, East Portal Add -
- Note: See subdivision of Block 9, 157-576,

I, Ronald L. Vogel, a competent surveyor of Scotts Bluff County, Nebraska, hereby certify that I have surveyed tracts of land situated in the Southeast Quarter (SE $\frac{1}{4}$ ) of Section Twenty-four (24), Township Twenty-two (22) North, Range Fifty-five (55) West of the 6th P.M., Scotts Bluff County, Nebraska, such tracts being more particularly described as follows:

TRACT NO. 1: (Lots 8 & 9, Block 4, East Portal Addition)

A tract of land in the N $\frac{1}{2}$ SE $\frac{1}{4}$  bounded on the West by 17th Avenue, on the South by 17th Street, and on the North and East by the dedicated abutting lots 4, 5, 6 and 7, Block 4, East Portal Addition, all according to the recorded plat thereof, such tract containing an area of 2.2 acres.

TRACT NO. 2: (Lots 4 through 13, Block 5, East Portal Addition)

A tract of land in the S $\frac{1}{2}$ SE $\frac{1}{4}$ , bounded on the West by 17th Avenue, on the South by 16th Street, on the North by 17th Street, and on the East by the dedicated alley abutting Lots 1 and 2, Block 5, East Portal Addition and the West Line of Lot 3, Block 5, East Portal Addition, all according to the recorded plats thereof, such tract containing an area of 5.7 acres.

TRACT NO. 3: (Block 9, East Portal Addition)

A tract of land in the N $\frac{1}{2}$ SE $\frac{1}{4}$ , bounded on the West by the East Line of Bet-Ron Subdivision, on the South by 17th Street, on the North by the South Line of Block 6, East Portal Addition, and on the East by 17th Avenue, all according to the recorded plats thereof, such tract containing an area of 5.0 acres.

That I have further subdivided and platted such land as above described as Lots 8 and 9, Block 4, Lots 4 through 13, Block 5, and Block 9, East Portal Addition to the City of Scottsbluff, Nebraska.

That the accompanying plat is a true delineation of such survey, drawn to a scale of 100 feet to the inch. That all Block corners set are marked with  $\frac{3}{4}$ " x 36" iron rods and all other corners with  $\frac{3}{4}$ " x 18" iron rods. That all dimensions are in feet and decimals and that each Lot and Block bears its own number. That the boundaries of the areas surveyed are shown on the plat with a heavy solid line and adjoining platted lots and streets are shown in dashed lines for orientation purposes.

WITNESS MY HAND AND SEAL this 17th day of July, 1975.



*Ronald L. Vogel*  
 RONALD L. VOGEL, NEBRASKA  
 REGISTERED LAND SURVEYOR  
 L.S. 266

We, the undersigned, being the owners of those tracts of land in Section 24, Township 22 North, Range 55 West of the 6th P.M., Scotts Bluff County, Nebraska, as described in the foregoing "Surveyor's Certificate" and shown by the accompanying plat, have caused such real estate to be surveyed and platted as Lots 8 and 9, Block 4, Lots 4 through 13, Block 5 and Block 9, East Portal Addition to the City of Scottsbluff, Nebraska.

We hereby dedicate the easements and designate the building setback lines shown on the plat to the use and benefit of the public.

The above described and foregoing subdivision and the Easements and Building Setback Designations is made with the free consent and in accordance with the desires of the undersigned owners.

Dated this 28th day of July, 1975.

WILDY & ATKINSON INC.

Attest: [Signature]  
Secretary

By: [Signature]  
C.D. Wildy, President

ACKNOWLEDGEMENT

State of Nebraska )  
Scotts Bluff County ) ss

Before me, a Notary Public, qualified in such County, personally came C.D. Wildy, President of Wildy & Atkinson Inc., a Nebraska Corporation, to me known to be the identical person and President of such Corporation who signed the foregoing "Owner's Statement and Dedication", and acknowledged the execution thereof to be his voluntary act and deed and the voluntary act and deed of such corporation.

WITNESS MY HAND AND NOTARIAL SEAL this 28th day of July, 1975.

[Signature]  
Notary Public



BARBARA A. VOGEL  
General Notary-State of Nebr.  
My Commission Expires  
May 17, 1978

My commission expires:

APPROVAL AND ACCEPTANCE

The foregoing plat of East Portal Addition Lots 8 and 9, Block 4, Lots 4 through 13, Block 5 and Block 9, approved and accepted by the Mayor and City Council of the City of Scottsbluff, by resolution duly passed this 25th day of August, 1975.

[Signature]  
Mayor

Attest: [Signature]  
City Clerk



State of Nebraska, Scotts Bluff County ss.  
Entered in Numerical Index and filed for  
record the 25 day of September, 1975  
at 1:05 o'clock P.M., and recorded in  
Book 148 of Deeds  
on page 143  
[Signature]  
Register of Deeds

File 475  
Rev Vogel