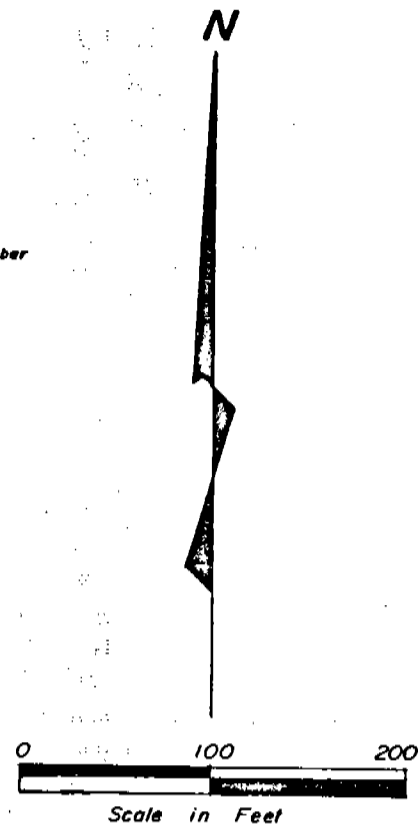
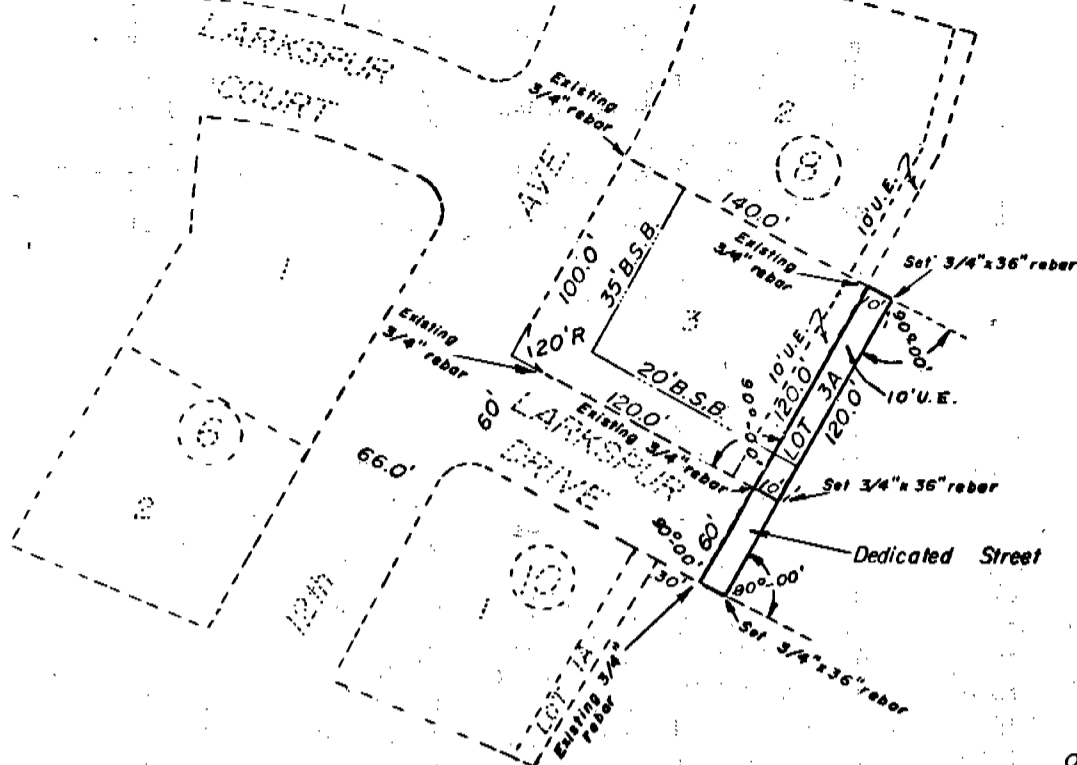


IDLEWYLDE ADDITION

3092

Lot 3A, Block 8

An Addition to the City of Scottsbluff, Nebraska



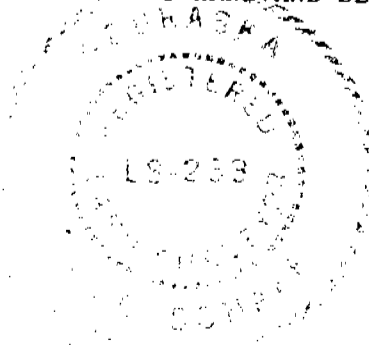
SURVEYOR'S CERTIFICATE

I, M. C. Schaff, a competent surveyor of Scotts Bluff County, Nebraska, hereby certify that I have surveyed a parcel of land situated in the Southwest Quarter (SW¹/₄) of Section Thirteen (13), Township Twenty-Two (22) North, Range Fifty-Five (55) West of the Sixth (6th) Principle Meridian (P.M.), Scotts Bluff County, Nebraska, and that such parcel of land will be platted and known as Lot 3A, Block 8, Idlewylde Addition to the City of Scottsbluff, Nebraska and that part of Larkspur Drive upon which such Lot 3A has frontage, the boundary of such subdivision being more particularly described as follows:

Beginning at the Northeast corner of Lot 3, Block 8, Idlewylde Addition to the City of Scottsbluff, Nebraska, as previously recorded; thence, southerly along such Lot 3, a distance of 120.0 feet to the North Line of Larkspur Drive; thence, continuing along the last described course extended to the South line of Larkspur Drive, a distance of 60.0 feet; thence, a deflection angle left of 90 degrees 00 minutes, along said South line extended easterly, a distance of 10.0 feet; thence, a deflection angle left of 90 degrees 00 minutes, a distance of 180.0 feet; thence, a deflection angle left of 90 degrees 00 minutes, a distance of 10.0 feet, to the point of beginning, containing an area of 0.04 acres, more or less.

That the accompanying plat is a true delineation of such survey and subdivision drawn to a scale of 100 feet to the inch and that all corners are marked as shown. That the boundary of such subdivision is shown on the plat with a heavy solid line and adjoining platted lands are shown with dotted lines for orientation purposes.

WITNESS MY HAND AND SEAL this 10 day of July, 1975.



For the Firm of M. C. SCHAFF & ASSOCIATES, INC.

M. C. Schaff
 M. C. Schaff, Nebraska Registered
 Land Surveyor, L. S. 233

DEDICATION AND ANNEXATION

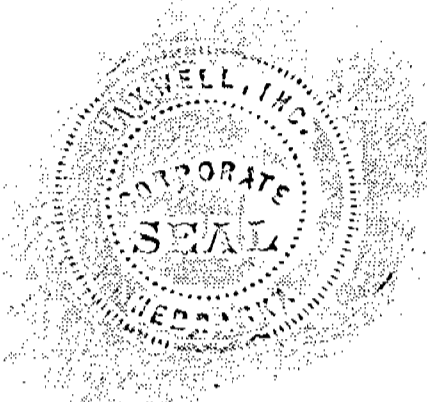
The foregoing subdivision of Idlewylde Addition along with that part of Larkspur Drive and the Building Setback designation shown on the plat is made with the free consent and in accordance with the desires of the undersigned Owner, and furthermore that it is the Owner's desire that such Lot 3A be occupied as a utility easement.

We hereby dedicate that part of Larkspur Drive designated upon and referred to in the accompanying plat to the use and benefit of the public and further annex and make such real estate a part of the City of Scottsbluff, Nebraska.

Dated this 10 day of July, 1975.

MAXWELL, INC.
A Nebraska Corporation

Melvin Maxwell
Melvin Maxwell, President



ACKNOWLEDGEMENT

STATE OF NEBRASKA)
SCOTTS BLUFF COUNTY) ^{SS}

Before me, a Notary Public, qualified and acting in said County, personally came Melvin Maxwell, President of Maxwell, Inc., to me known to be the identical person and President of such Corporation, who signed the foregoing "Dedication and Annexation" and acknowledged the execution thereof to be his voluntary act and deed and the voluntary act and deed of such corporation, and that his corporate seal was thereto affixed by its authority.

WITNESSED AND NOTARIAL Seal this 10th day of July, 1975.



Bonnie L. Smith
Notary Public

My commission expires: June 13, 1976

IDLEWYLDE ADDITION
LOT 3A, BLOCK 8
SCOTTSBLUFF, NEBRASKA

3092

Sheet 3 of 3

APPROVAL AND ACCEPTANCE

The foregoing Plat of Idlewylde Addition, Lot 3A, Block 8, hereby approved by the Mayor and City Council of Scottsbluff, Nebraska, by resolution duly passed this 14th day of July, 19 75.

Donald E. Quensen
Mayor

ATTEST:

A. L. Ferguson
City Clerk



NUMERICAL
 GENERAL
TAX REC.
PICTURE

State of Nebraska, Scotts Bluff County ss.
Entered in Numerical Index and filed for
record the 5 day of August, 1975
at 11:20 o'clock A.M., and recorded in
Book 147 of Deeds
on page 415
Mary Jo Lillis
Register of Deeds
By Deputy