

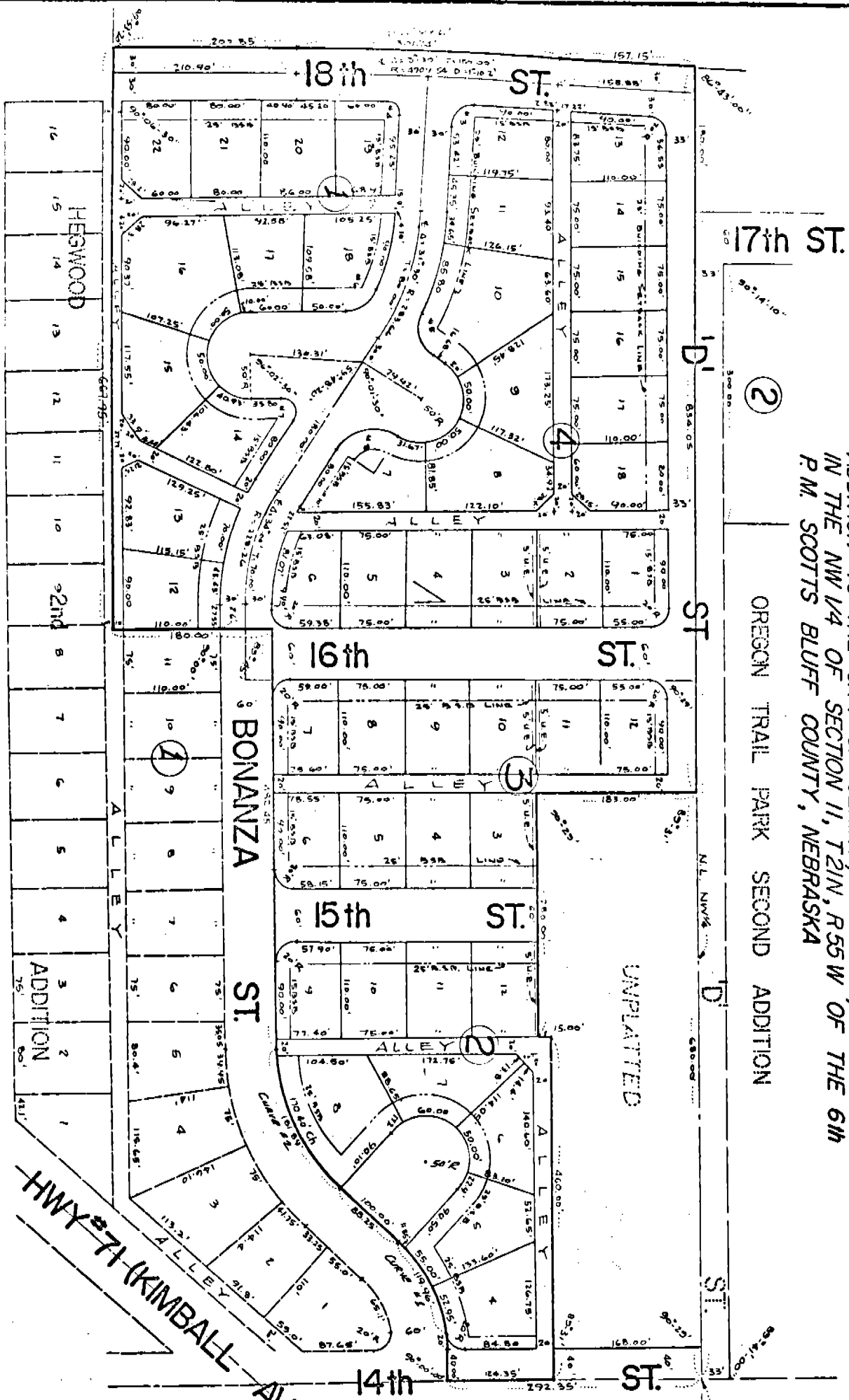
1825

CONCRETE

PAVING

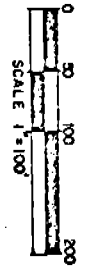
LOTS 12-22, BLOCK 1, LOTS 4-12, BLOCK 2, LOTS 3-12, BLOCK 3, & LOTS 1-18, BLOCK 4, AN ADDITION TO THE CITY OF GERING, NEBRASKA, SITUATED IN THE NW 1/4 OF SECTION 11, T21N, R55W OF THE 6TH P.M. SCOTTS BLUFF COUNTY, NEBRASKA

OREGON TRAIL PARK SECOND ADDITION



N.E. CORNER NW 1/4 SECTION 11, T21N, R55W

- CURVE #1 $\Delta = 47^{\circ}06'10''$
 $R = 142.22'$
 $D = 33^{\circ}42'6''$
 $T = 54.57'$
- CURVE #2 $\Delta = 47^{\circ}32'40''$
 $R = 142.22'$
 $D = 33^{\circ}42'6''$
 $T = 54.57'$
- CURVE #3 $\Delta = 89^{\circ}57'40''$
 $R = 26.58'$
 $T = 26.58'$
- CURVE #4 $\Delta = 97^{\circ}14'40''$
 $R = 13.50'$
 $T = 13.50'$
- CURVE #5 $\Delta = 80^{\circ}35'20''$
 $R = 37.76'$
 $T = 37.76'$
- CURVE #6 $\Delta = 66^{\circ}01'30''$
 $R = 24.08'$
 $T = 24.08'$
- CURVE #7 $\Delta = 124^{\circ}01'40''$
 $R = 15.93'$
 $T = 30.05'$
- CURVE #8 $\Delta = 90^{\circ}00'00''$
 $R = 50.00'$
 $T = 50.00'$



SURVEYOR'S CERTIFICATE

I, Ronald L. Vogel, a competent surveyor of Scotts Bluff County, Nebraska, hereby certify that I have surveyed "Conestoga Park" an addition to the City of Gering, Nebraska, Lots 12 through 22, Block 1; Lots 4 through 12, Block 2; Lots 3 through 12, Block 3; Lots 1 through 18, Block 4; a subdivision of part of the Northwest Quarter (NW $\frac{1}{4}$) of Section Eleven (11), Township Twenty-one (21) North, Range Fifty-five (55) West of the 6th P.M., Scotts Bluff County, Nebraska, the boundary of such subdivision being more particularly described as follows:

With reference to the Northeast corner of such NW $\frac{1}{4}$; then South on the East Line of such NW $\frac{1}{4}$ a distance of 168.00 feet; to the point of Beginning then continuing South on the East Line of such NW $\frac{1}{4}$ a distance of 124.35 feet; then a deflection angle to the right of 90 degrees 00 minutes a distance of 40.00 feet to the intersection of the North Line of Bonanza Street and the West Line of 14th Street, as previously platted such point also being the P.C. of a 33° 42.6' curve to the left, Central Angle of which 47° 10' 10"; then continuing westerly on the North Line of Bonanza Street and on such curve; then continuing, tangent to such curve, a distance of 88.25 feet to the P.C. of a 26° 07.8' curve to the right, Central Angle of which is 47° 32' 40"; then Westerly on such curve and North Line of Bonanza Street a distance of 181.89 feet to the P.T. of such curve; then continuing, tangent to such curve, a distance of 482.45 feet; then a deflection angle to the left of 90° 15' 00" a distance of 60.00 feet to the point on the South Line of Bonanza Street; then a deflection angle to the right of 90° 00' 00" a distance of 2.60 feet to the Northwest corner of Lot 11, Block One, Conestoga Park, an addition to the City of Gering, Nebraska, according to the recorded plat thereof; then a deflection angle to the left of 90° 00' 00" a distance of 120.00 feet to the North Line of the alley as platted in Hegwood Second Addition then West, on the North Line of such alley a distance of 667.95 feet; then a deflection angle to the right of 89° 53' 20" a distance of 200.85 feet to the P.C. of a 1° 09.6' curve to the right, Central Angle of which is 3° 30'; then Northerly on such curve a distance of 301.74 feet to the P.T. of such curve; then Northerly, tangent to such curve a distance of 157.15 feet to the North Line of such NW $\frac{1}{4}$; then East, on such North Line of the NW $\frac{1}{4}$ a distance of 834.05 feet; then a deflection angle to the right of 89° 31' a distance of 183.00 feet; then a deflection angle to the left of 89° 31' a distance of 280.00 feet; then a deflection angle to the left of 90° 29' a distance of 1500 feet then a deflection angle to the right of 90° 29' a distance of 400.00 feet to the point of beginning, containing an area of 15.3 acres, more or less.

That the accompanying plat is a true delineation of such survey drawn to a scale of 100 feet to the inch. That all corners are marked with 3/4 inch diameter reinforcing rods a minimum of 18 inches in length. That all dimensions are in feet and decimals and that each Lot and Block bears its own number. That the boundary of the Subdivision is shown on the plat with a heavy solid line.

WITNESS MY HAND AND SEAL this 7th day of May, 1975.



Ronald L. Vogel

Ronald L. Vogel

Nebraska Registered Land Surveyor

L.S. 266

DEDICATION AND ANNEXATION

We, the undersigned, being the owners of that part of the Northwest Quarter (NW $\frac{1}{4}$) of Section 11, Township 21 North, Range 55 West of the 6th P.M., Scotts Bluff County, Nebraska, as described in the foregoing "Surveyor's Certificate" and shown by the accompanying plat have caused such real estate to be surveyed and platted as "Conestoga Park" Lots 12 through 22, Block 1; Lots 4 through 12, Block 2; Lots 3 through 12, Block 3 and Lots 1 through 18, Block 4, an addition to the City of Gering, Nebraska.

We hereby dedicate the Street, Avenues, Alleys and Easements and designate the building setback lines shown on and referred to in the plat to the use and benefit of the public and further annex and make such real estate a part of the City of Gering, Nebraska.

The foregoing subdivision and the Street, Avenues, Easements and Building Setback Lines are made with the free consent and in accordance with the desires of the undersigned owners.

Dated this 7th day of May, 1975.

Panhandle Development Inc.

By: H.O. Jones
H.O. Jones, President

Attest: Ernest Hackman
Secretary

ACKNOWLEDGEMENT

State of Nebraska)
Scotts Bluff County) ss

Before me, a Notary Public, qualified and acting in such County, personally came H.O. Jones, President of Panhandle Development Inc., a Nebraska Corporation, to me known to be the identical person and President of such corporation who signed the foregoing "Annexation and Dedication" and acknowledged the execution thereof to his voluntary act and deed and the voluntary act and deed of such corporation.

Witness my hand and Notary seal this 7th day of May, 1975.



BARBARA A. VOGEL
General Notary-State of Nebr.
My Commission Expires
May 17, 1978

Barbara A. Vogel
Notary Public

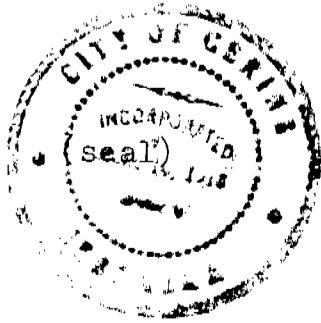
My commission expires

APPROVAL AND ACCEPTANCE

The foregoing subdivision of "Conestoga Park" approved and accepted by the Mayor and City Council of the City of Gering, Nebraska by Ordinance No. 887 duly passed this 12th day of May 1975.

John McEllan, Jr.
Mayor

Attest: Richard J. Brown
City Clerk



State of Nebraska, Scotts Bluff County ss.
Entered in Numerical Index and filed for
record the 14 day of May, 1975
at 2:15 o'clock P. M., and recorded in
Book 146 of Deeds
on page 562
Mary Jo Telles
Register of Deeds
By Deputy

By 1025
Ron Vogel

Notary Public
P.O. No. 5