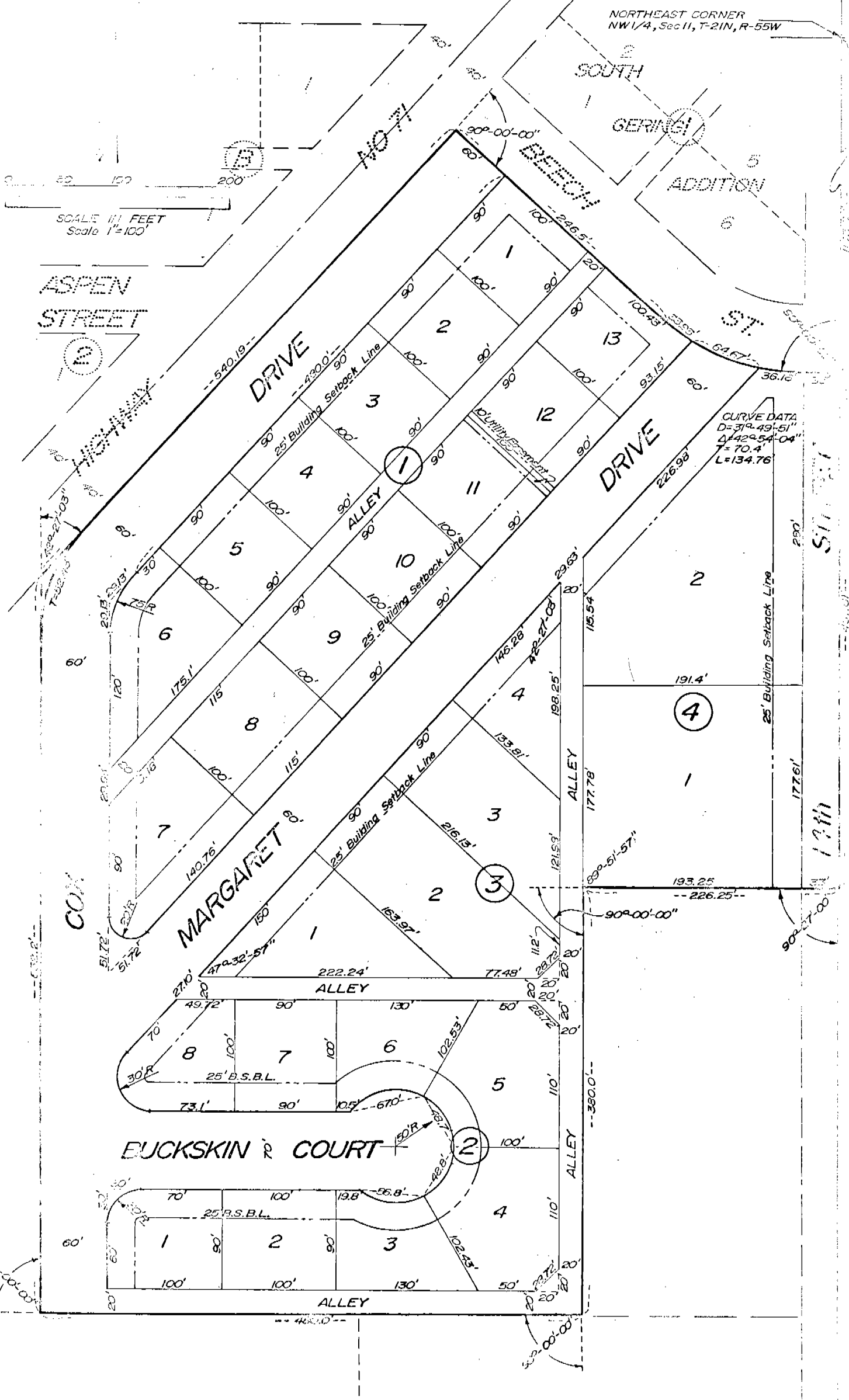


KIMBERLY PARK
A Tract of Land Situated in the Northeast Quarter of Section
Eleven (11), Township Twenty-One (21) North, Range Fifty-Five
(55) West of the Sixth P.M., Scotts Bluff County, Nebraska.

44-00



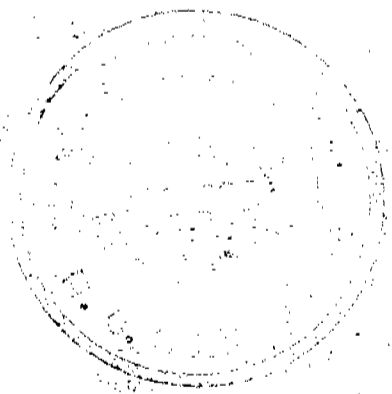
Note lot 3 & 4 of Subdivision 17-1

NOTE: See Replat Of Lots 3 & 4, Block 2, Kimberly Park Addition, Deed 207-703

SURVEYOR'S CERTIFICATE

I, M. C. Schaff, a competent Surveyor of Scotts Bluff County, Nebraska, hereby certify that I have surveyed and subdivided Kimberly Park Addition, Lots One (1) through Thirteen (13), Block One (1), Lots One (1) through Eight (8), Block Two (2), Lots One (1) through Four (4), Block Three (3), and Lots One (1) and Two (2), Block Four (4), an Addition to the City of Gering, Nebraska, situated in the Northwest Quarter of Section Eleven (11) Township Twenty-One (21) North, Range Fifty-Five (55) West of the Sixth (6th) P.M., Scotts Bluff County, Nebraska. The boundry of such subdivision being more particularly described as follows:

Commencing at the Northeast corner of the Northwest Quarter of Section 11; then, South along the East Line of such Northwest Quarter, a distance of 1,143.55 feet to the point of beginning; then, continuing along such East Line, a distance of 457.61 feet; then, a deflection angle right of 90 degrees 27 minutes 00 seconds, a distance of 226.25 feet; then, a deflection angle left of 90 degrees 00 minutes 00 seconds, a distance of 330.00 feet to a point on the South line of the North Half, South Half, Northwest Quarter ($N\frac{1}{2}, S\frac{1}{2}, NW\frac{1}{4}$); then, a deflection angle right of 90 degrees 00 minutes 00 seconds, along such South Line, a distance of 480.0 feet; then, a deflection angle right of 90 degrees 00 minutes 00 seconds, a distance of 652.20 feet to the point of intersection with the East Right of Way Line of State Highway No. 71; then, a deflection angle right of 42 degrees 27 minutes 03 seconds along such Right of Way, a distance of 540.19 feet; then, a deflection angle right of 90 degrees 00 minutes 00 seconds, a distance of 246.50 to the point of curvature of a 31 degree 49 minute 51 second curve to the left, with a central angle of 42 degrees 54 minutes 04 seconds, and radius of 180.0 feet; then, along the arc of such curve a distance of 134.76 feet to the point of tangent of such curve; then, along the tangent to said curve, a distance of 33.00 feet, to the point of beginning, containing an area of 11.92 acres, more or less.



M. C. Schaff
 M. C. Schaff, Nebraska Registered
 Land Surveyor, L.S. 233

DEDICATION AND ANNEXATION

We, the undersigned, being the Owners of that part of the NW 1/4 of Section 11, Township 21 North, Range 55 West of the 6th P.M., Scotts Bluff County, Nebraska, as described in the foregoing "Surveyor's Certificate" and shown by the accompanying Plat have caused such real estate to be surveyed and platted as KIMBERLY PARK ADDITION, Lots 1 through 13, Block 1, Lots 1 through 8, Block 2 and Lots 1 through 4, Block 3, and Lots 1 and 2, Block 4, an Addition to the City of Gering, Nebraska.

We hereby dedicate the streets, Avenues, Courts, Alleys, Easements and Building Setback Designations shown on and referred to in the Plat to the use and benefit of the public and further annex and make such real estate a part of the City of Gering, Nebraska.

The above described and foregoing subdivision and the Streets, Avenues, Courts, Alleys and Building Setback Designations is made with the free consent and in accordance with the desires of the undersigned Owners.

Dated this 14th day of October, 1974.

Robert Cox, Sr.
Robert Cox, Sr.

Anna M. Cox
Anna M. Cox

Robert Cox, Jr.
Robert Cox, Jr.

Kimberly Ann Cox
Kimberly Ann Cox

ACKNOWLEDGEMENT

STATE OF NEBRASKA)
SCOTTS BLUFF COUNTY) ss

Before me, a Notary Public, qualified and acting in such County, personally came Robert Cox, Sr., Anna M. Cox, Robert Cox, Jr., and Kimberly Cox, to me known to be the identical persons who signed the foregoing "Dedication and Annexation" and acknowledged the execution thereof to be their voluntary act and deed.

WITNESS MY HAND AND SEAL this 14th day of October, 1974.



Bonnie L. Smith
Notary Public

My Commission Expires: June 13, 1976

APPROVAL AND ACCEPTANCE

The foregoing subdivision of KIMBERLY PARK ADDITION, approved and accepted by the Mayor and City Council of the City of Gering, Nebraska by Ordinance No. 854 duly passed this 29th day of October, 1974.

John Mc Lellan, Jr.
Mayor

ATTEST:

Richard J. Brown
City Clerk



State of Nebraska, Scotts Bluff County ss.
Entered in Numerical Index and filed for
record the 12 day of November 1974
at 9:20 o'clock A. M., and recorded in
Book 145 of Deeds
on page 48
Mary J. Ellis
Register of Deeds
By Opal J. Clark Deputy

RECORDED
GENERAL
TAX REG.
PICTURED