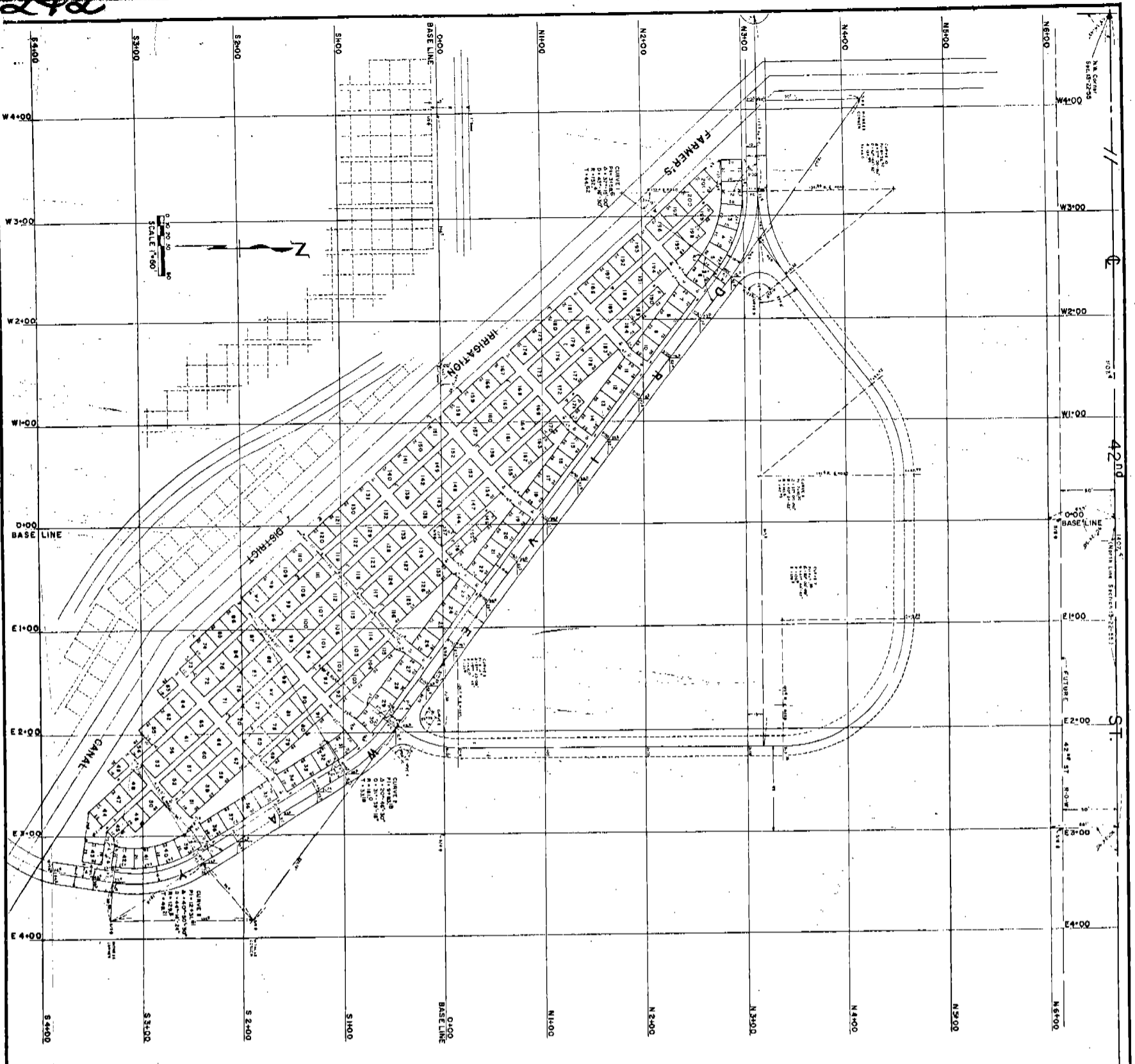


242



4785
REPLAT NO. 1 OF
PART OF SECTION D
OF THE REPLAT OF PART OF THIRD ADDITION
TO FAIRVIEW CEMETERY, SCOTT'S BLUFF, NEBR.

SCALE 1"=60'

BASE LINES AND GRAVES ARE DELINEATED BY CONCRETE PIPES AT THE NORTH LINE OF THE NORTH ROW OF LOTS IN THE FIRST ADDITION OF THE EXISTING CEMETERY. GRAVES ARE 50 FT. APART AND ARE 20 FT. WIDE. THE CENTER LINE OF THE DRIVEWAYS BEING 10 FT. FROM THE DRIVEWAY CENTER LINE AND MEASURED TO THE SOUTH DIMENSIONS OF LOTS. LOTS BEING THE DRIVEWAY AVERAGE 20 FEET IN WIDTH AND 10 FEET IN LENGTH. THE DRIVEWAY CENTER LINE IS 10 FEET FROM THE DRIVEWAY CENTER LINE AND MEASURED TO THE SOUTH DIMENSIONS OF LOTS. EACH LOT BEING ITS OWN NUMBER AND EACH GRAVE SITE WITHIN A LOT BEING ITS OWN NUMBER.

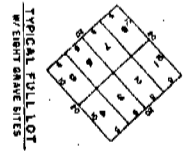
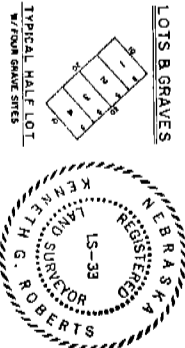
NOTES:
 DESIGNED BY - LANDSCAPE ARCHITECTS
 EAST LAFAYETTE, NEBRASKA

SURVEYOR'S CERTIFICATE

I, NATHAN DOBSON, REGISTERED SURVEYOR OF SCOTT'S BLUFF COUNTY, NEBRASKA DO HEREBY CERTIFY THAT THE SURVEY HEREIN SHOWN IS A TRUE AND CORRECT REPRESENTATION OF THE SURVEY AS SHOWN ON THE ORIGINAL PLAT OF SECTION D, TOWNSHIP 22N, RANGE 12E, COUNTY OF SCOTT'S BLUFF COUNTY, NEBRASKA, WHICH IS A PART OF THE WEST 1/4 SECTION OF ORIGINAL PLAT OF A PART OF THE THIRD ADDITION TO FAIRVIEW CEMETERY, SCOTT'S BLUFF, NEBRASKA, PREPARED BY SAID SURVEYOR AND FILED IN THE PUBLIC RECORDS OF SAID COUNTY, NEBRASKA, IN THE CITY OF SCOTT'S BLUFF, NEBRASKA, THE DATE OF WHICH IS MORE PARTICULARLY SHOWN AS FOLLOWS:

WITH REFERENCE TO A POINT ON THE NORTHWEST CORNER OF SAID SECTION, A DISTANCE OF 110 FT. TO THE NORTH-SOUTH BASE LINE (0000) AS DESIGNATED BY SAID SURVEYOR, AND A DISTANCE OF 455 FEET IN A SOUTHWESTLY DIRECTION TO CORNER NE-10-A, THE ACCOUNTING POINT OF SAID SECTION, THE DISTANCE OF 455 FEET IN A SOUTHWESTLY DIRECTION WITH ALL DIMENSIONS SHOWN THEREON IN FEET AND DECIMALS, ALL LOTS ARE MARKED WITH 1/2" IRON RODS DRIVEN WELL INTO THE SOIL.

WITNESSE MY HAND AND SEAL
 NATHAN DOBSON
 REGISTERED SURVEYOR
 LAND SURVEYOR L.S. 35
 EXPIRES 1974



State of Nebraska, Scotts Bluff County ss.
 Entered in Numerical Index and filed for
 record the 16... day of December 1974
 at 8:30 o'clock A.M., and recorded in
 Book 145... of Deeds
 on page 242
 Mary Jo Tollie
 Register of Deeds

NUMERICAL
 GENERAL
 TAX REG.
 PICTURED

4785