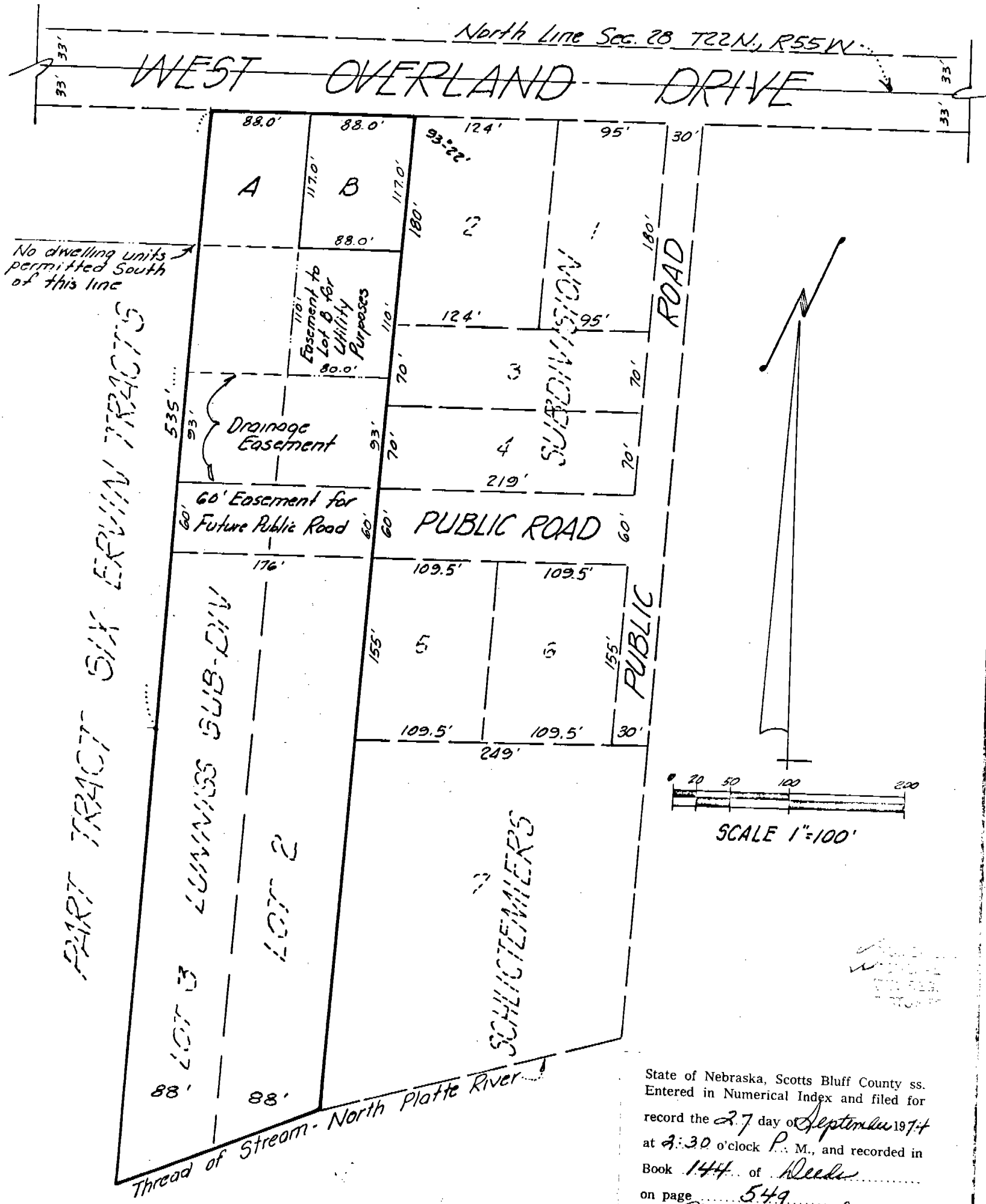


# LIAKOS SUBDIVISION

OF TRACTS TWO & THREE, LUNNISS  
SUBDIVISION OF TRACT SIX, ERVIN TRACTS  
SECTION 28, T22N, R55W OF THE 6TH P.M.,  
SCOTTS BLUFF COUNTY, NEBRASKA



State of Nebraska, Scotts Bluff County ss.  
 Entered in Numerical Index and filed for  
 record the 27 day of September 1974  
 at 2:30 o'clock P. M., and recorded in  
 Book 144 of Records  
 on page 549  
 Mary Jo Lellis  
 Register of Deeds  
 By \_\_\_\_\_ Deputy

550

3857

September 9, 1974

LAND SUBDIVISION  
Scottsbluff, Nebraska

SURVEYOR'S CERTIFICATE

I, Donald L. Vogel, a competent surveyor of Scotts Bluff County  
Nebraska hereby certify that I have surveyed "Lots A and B" a  
subdivision of Tracts Two and Three, Lewis Subdivision of Tract  
Six, Erwin Tracts situated in part of Government Lot One (1), in  
the Northeast Quarter of Section Twenty-eight (28), Township Twenty-  
two (22) North, Range Fifty-five (55) West of the 6th P.M., Scotts  
Bluff County, Nebraska.

That such subdivision contains Lots A and B and comprises an area  
of 3.6 acres, more or less.

That the accompanying plat is a true deliniation of such survey  
drawn to a scale of 100 feet to the inch.

That Lot corners are marked with 5/8" x 18" iron rods and that all  
dimensions are in feet and decimals.

That each Lot bears its own Letter and that the boundary of the  
subdivision is shown on the plat with a heavy solid line.

Witness my hand and seal this 9th day of September, 1974.



*Ronald L. Vogel*  
Ronald L. Vogel Nebraska  
Registered Land Surveyor  
L S 266

OWNERS STATEMENT

We, the undersigned, being the owners of Tracts 2 and 3, 7<sup>th</sup> and 8<sup>th</sup> Subdivisions of Tract 6, Ervin Tracts, of Government Lot 1, Section 28, Township 22 North, Range 55 West of the 6th P.M., Scotts Bluff County, Nebraska, as described in the foregoing "Surveyor's Certificate" and shown by the accompanying plat, have caused such real estate to be surveyed and platted as LIAKOS SUBDIVISION, Lots A and B, as shown by the accompanying plat and surveyor's certificate.

The foregoing subdivision and the Easements and Building Setback Designations are made with the free consent and in accordance with the desires of the undersigned owners.

Dated this 9<sup>th</sup> day of September 1974.

Thomas G. Liakos  
Thomas G. Liakos

Doris D. M. Liakos  
Doris D. M. Liakos

ACKNOWLEDGEMENT

State of Nebraska )ss  
Scotts Bluff County )

Before me, a Notary Public, qualified for such County, personally came Thomas G. Liakos and Doris D.M. Liakos, husband and wife, to me known to be the identical persons who signed the foregoing "Owners Statement" and acknowledged the execution thereof to be their voluntary act and deed.

Witness my hand and Notarial Seal this 9th day of September 1974

Seal  BARBARA A. VOGEL  
General Notary-State of Nebr.  
My Commission Expires  
May 17, 1978

Barbara A. Vogel  
Notary Public

APPROVAL AND ACCEPTANCE

The foregoing "Liakos Subdivision" is hereby approved and accepted by the Mayor and City Council of the City of Scottsbluff by the resolution duly passed this *23rd* day of *September*, 1974.

*Donald E. Sherman*  
\_\_\_\_\_  
Mayor

Attest: *L. P. Ferguson*  
\_\_\_\_\_  
City Clerk

