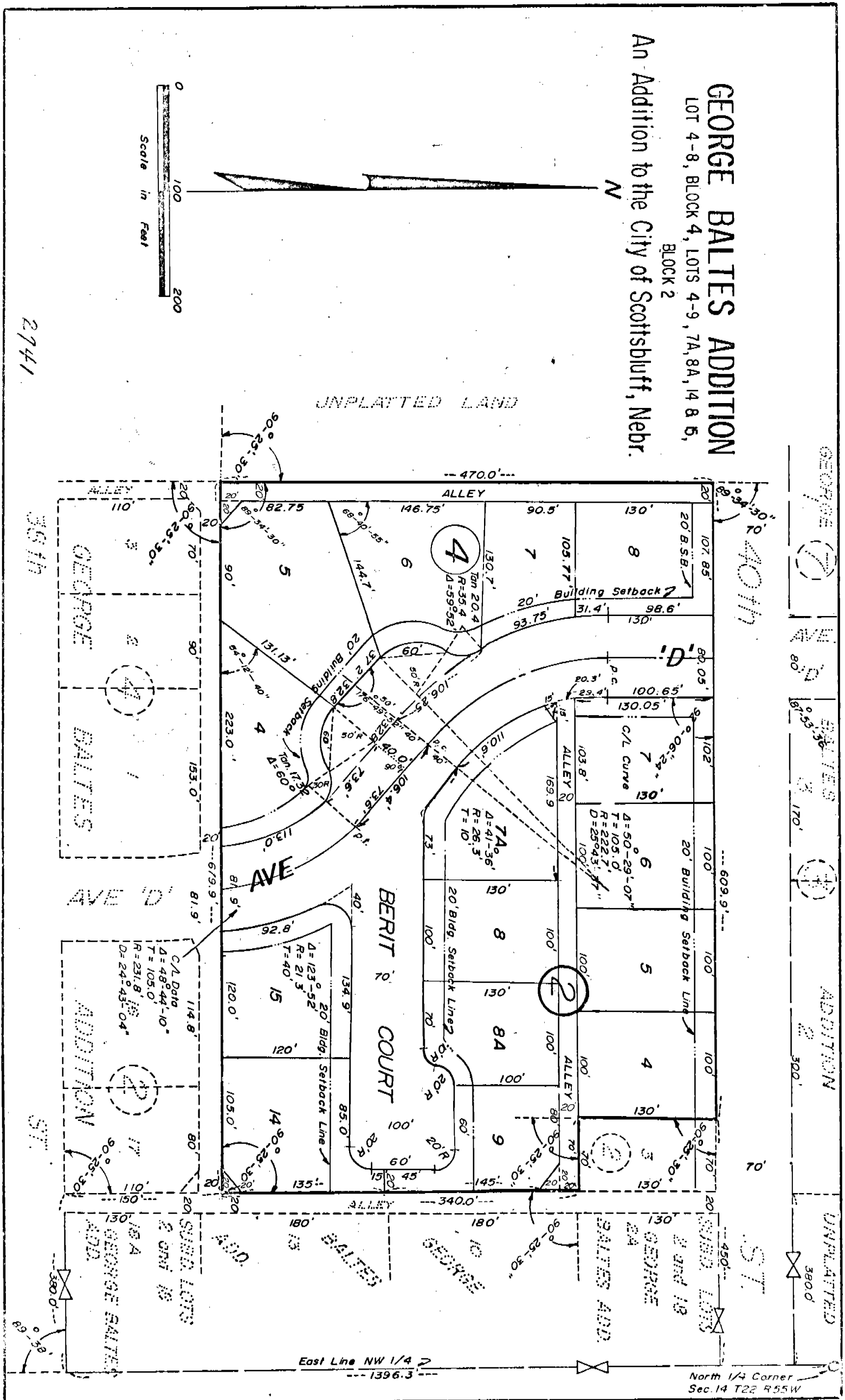


42

**GEORGE BALTES ADDITION**  
 LOT 4-8, BLOCK 4, LOTS 4-9, 7A, 8A, 14 & 15,  
 BLOCK 2

An Addition to the City of Scottsbluff, Nebr.



2741

367h

407h

GEORGE BALTES ADDITION  
 2 300'  
 UNPLATTED 380.0'

SURVEYOR'S CERTIFICATE

I, M. C. Schaff, a competent surveyor of Scotts Bluff County, Nebraska, hereby certify that I have surveyed and subdivided GEORGE BALTES ADDITION, Lots 4 through 9, 7A, 8A, 14 & 15, Block 2 and Lots 4 through 8, Block 4, and part of Avenue "D"; an addition to the City of Scottsbluff, Nebraska, situated in the Northwest Quarter (NW $\frac{1}{4}$ ) of Section Fourteen (14), Township Twenty-Two (22) North, Range Fifty-Five (55) West of the Sixth (6th) Principle Meridian (P.M.), Scotts Bluff County, Nebraska, the boundary of such survey and subdivision being more particularly described as follows:

Commencing at the North Quarter Corner of such Section 14; then, South along the North/South Centerline of such Section, a distance of 1,396.3 feet; then, a deflection angle to the right of 89 degrees 38 minutes, a distance of 380.0 feet to the Southeast Corner of Lot 17, Block 2, George Baltès Addition as previously platted; then, a deflection angle to the right of 90 degrees 25 minutes 30 seconds, a distance of 150 feet to the POINT OF BEGINNING; then, a deflection angle to the left of 90 degrees 25 minutes 30 seconds, a distance of 679.9 feet; then, a deflection angle to the right of 90 degrees 25 minutes 30 seconds, a distance of 470.0 feet, to the South Right of Way Line of 40th Street; then, a deflection angle to the right of 89 degrees 34 minutes 30 seconds, along such South Right of Way Line, a distance of 609.9 feet, to the Northwest Corner of Lot 3, Block 2, George Baltès Addition; then, a deflection angle to the right of 90 degrees 25 minutes 30 seconds, a distance of 130 feet, along the West Line of said Lot 3; then, a deflection angle to the left of 90 degrees 25 minutes 30 seconds, along the South Line of said Lot 3, a distance of 70.0 feet, to the Southeast Corner of said Lot 3; then, a deflection angle to the right of 90 degrees 25 minutes 30 seconds, a distance of 340.0 feet, to the POINT OF BEGINNING, containing an area of 7.12 acres, more or less.

That the accompanying Plat is a true delineation of such survey and subdivision drawn to a scale of 100 feet to the inch. That all corners are marked with 3/4 inch by 36 inch iron rods and that all dimensions are in feet and decimals. That each Lot and Block bears its own number and that the boundary of the subdivision is shown on the Plat with a heavy solid line.

WITNESS MY HAND AND SEAL this 13th day of May, 19 74.



M. C. Schaff  
 M. C. Schaff, Nebraska Registered  
 Land Surveyor, L. S. 233

44

2741

SHEET 3 of 4

GEORGE BALTES ADDITION  
LOTS FOUR THROUGH EIGHT, BLOCK TWO  
LOTS FOUR THROUGH EIGHT, BLOCK FOUR

DEDICATION AND ANNEXATION

We, the undersigned, being the Owners of that part of the Northwest Quarter of Section 14, Township 22 North, Range 55 West of the 6th P.M., Scotts Bluff County, Nebraska, as described in the foregoing "Surveyor's Certificate" and shown by the accompanying plat have caused such real estate to be surveyed and platted, as Lot Four (4) through Nine (9), Seven A (7A), Eight A (8A), Fourteen (14) and Fifteen (15), Block Two (2), and Lots Four (4) through Eight (8), Block Four (4), GEORGE BALTES ADDITION to the City of Scottsbluff, Nebraska.

We hereby dedicate the streets, avenues, alleys and court shown on and referred to in the plat to the use and benefit of the public, and further annex and make such real estate a part of the City of Scottsbluff.

The above described and foregoing subdivision of GEORGE BALTES ADDITION and the streets, avenues, alleys, court and building setback designations are made with the free consent and in accordance with the desires of the undersigned owners.

Dated this 7<sup>th</sup> day of May, 1974.



METROPOLITAN DEVELOPMENT COMPANY  
SCOTTSBLUFF, NEBRASKA

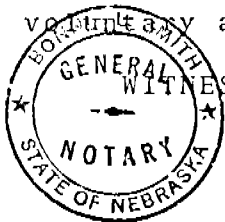
Bernhard Kleven  
BERNHARD KLEVEN, President

Robert Berggren  
ROBERT BERGGREN, Secretary

ACKNOWLEDGEMENT

STATE OF NEBRASKA     )  
SCOTTS BLUFF COUNTY } ss

Before me, a Notary Public, qualified and acting in such County, personally came Bernhard Kleven, President of Metropolitan Development Company, known to me to be the President and identical person who signed the foregoing "Dedication and Annexation" and acknowledged the execution thereof to be his voluntary act and deed and the voluntary act and deed of such Company.



WITNESS MY HAND AND NOTARIAL SEAL this 13<sup>th</sup> day of May, 1974.

Bonnie L. Smith  
Notary Public

My commission expires: June 13, 1976.

GEORGE BALTES ADDITION  
LOTS Four THROUGH NINE, 7A, 8A, 14 & 15  
LOTS FOUR THROUGH EIGHT, BLOCK FOUR

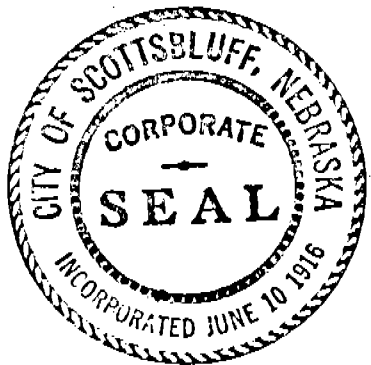
APPROVAL AND ACCEPTANCE

The foregoing subdivision of GEORGE BALTES ADDITION, Lots Four (4) through Nine (9), Seven A (7A), Eight A (8A), Fourteen (14) and Fifteen (15), Block Two (2); and Lots Four (4) through Eight (8), Block Four (4), an Addition to the City of Scottsbluff, Nebraska, hereby approved and accepted by the Mayor and City Council of the City of Scottsbluff, Nebraska, by resolution duly passed this 24<sup>th</sup> day of June, 1974.

Ronald E. Eberman  
Mayor

ATTEST:

A. L. Ferguson  
City Clerk



State of Nebraska, Scotts Bluff County ss.  
Entered in Numerical Index and filed for  
record the 9 day of July, 1974  
at 3:00 o'clock P. M., and recorded in  
Book 144 of Deeds  
on page 421  
Mary J. Ellis  
Register of Deeds  
By Opal J. Clark Deputy

NUMERICAL  
 GENERAL  
TAX REG.  
PICTURED