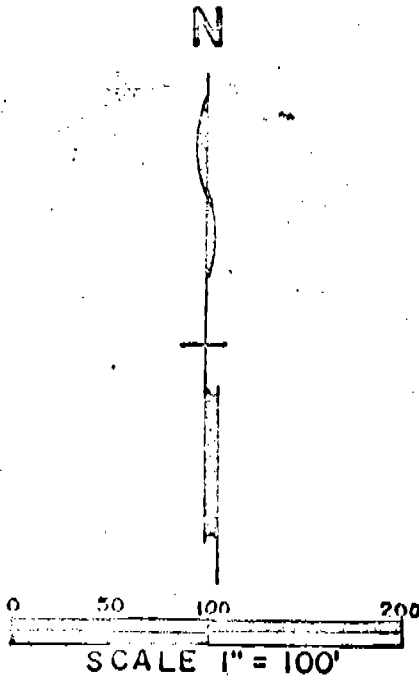
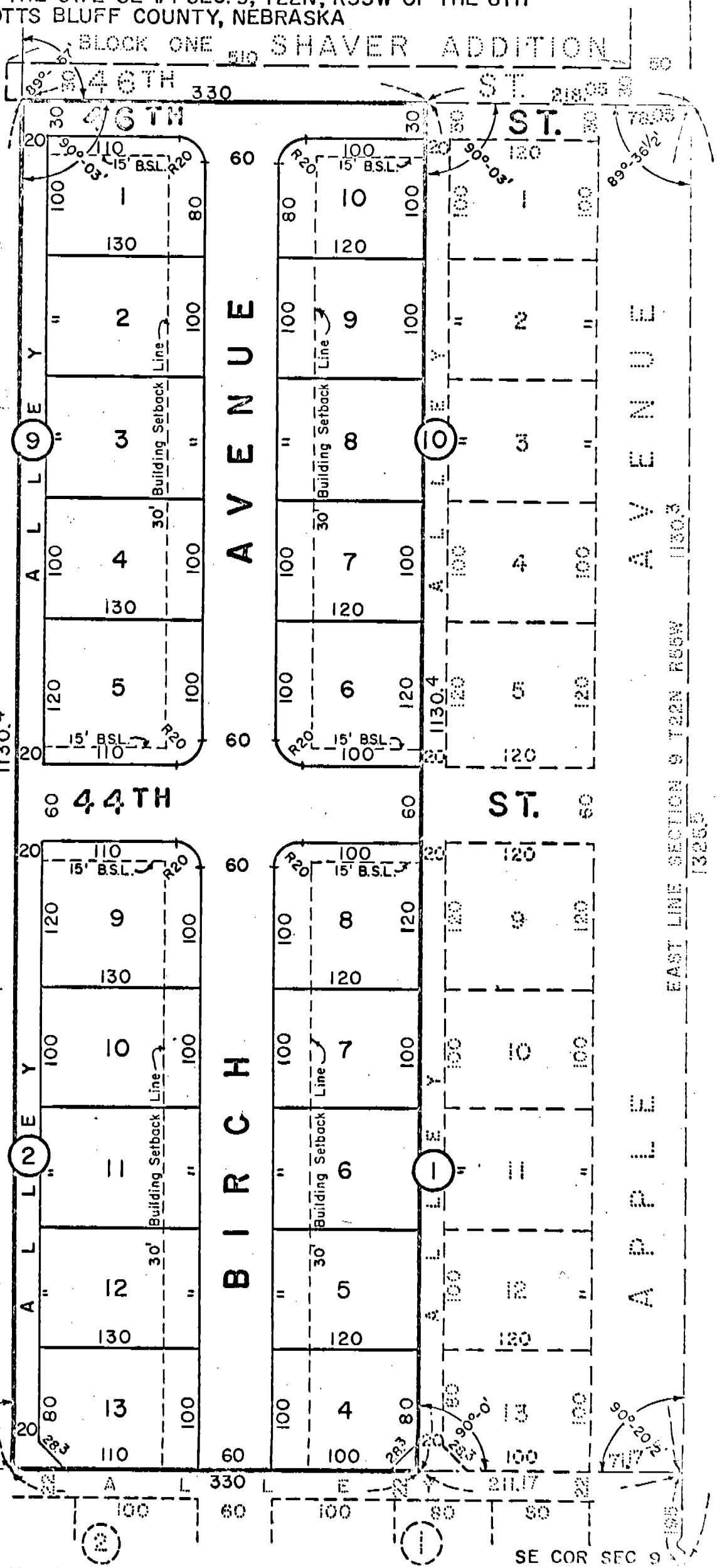


KEN-DILL SUBDIVISION

LOTS 4 TO 8 INCL. BLOCK 1; LOTS 9 TO 13 INCL. BLOCK 2;
 LOTS 1 TO 5 INCL. BLOCK 9; LOTS 6 TO 10 INCL. BLOCK 10;
 A PART OF THE S1/2 SE 1/4 SEC. 9, T22N, R55W OF THE 6TH
 P.M., IN SCOTTS BLUFF COUNTY, NEBRASKA



State of Nebraska, Scotts Bluff Co. ss.
 Entered in Numerical Index and filed for
 record the 15. day of April, 1974
 at 8:15 o'clock A.M., and recorded in
 Book 143 of Deeds
 on page 239
 By *Mary J. Lohli* Deputy
 Register of Deeds

NUMERICAL
 GENERAL
 TAX REG.
 PICTURED

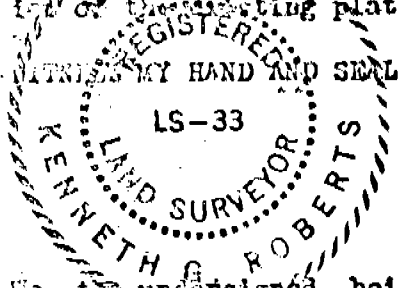
EAST LINE SECTION 9 T22N R55W 1130.3
 13255

SE COR SEC 9

S U R V E Y O R ' S C E R T I F I C A T E

I, Kenneth George Roberts, a competent surveyor of Scotts Bluff County, Nebraska do hereby certify that I have completed a survey and platted lots 4 to 8 Incl., Block One (1); Lots 9 to 13 Incl., Block Two (2); Lots 1 to 5 Incl., Block Nine (9); Lots 6 to 10 Incl., Block Ten (10), KENNEDY HILL SUBDIVISION situated on a part of the South-half of the Southeast Quarter (SE 1/4) of Section Nine (9), Township Twenty-two (22) North, Range Fifty-five (55) West of the 6th P.M., in Scotts Bluff County, Nebraska, more particularly described as follows: With reference to a point on the Southeast corner of such Section Nine (9); thence north on the east line of such section, a distance of 195 feet; thence west and parallel with the South line of such Section Nine (9), a distance of 211.17 feet to the intersection of the west line of the north-south alley with the north line of the east-west alley in Block One (1), of the recorded plat of KENNEDY HILL SUBDIVISION and the point of beginning; thence west on the north line of such platted alley of such KENNEDY HILL SUBDIVISION, a distance of 330 feet; thence angle right, 90 degrees, a distance of 1130.4 feet, in a northerly direction, parallel with the aforementioned west line of the north-south alley in Blocks One (1), and Ten (10) of such Subdivision; thence angle right 89 degrees and 57 minutes, a distance of 330 feet to intersect the northerly extension of the aforementioned west line of the north-south alley; thence angle right 90 degrees and 03 minutes, a distance of 1130.4 feet, in a southerly direction on such west alley line to the point of beginning; containing 8.58 acres more or less. That the accompanying plat is a correct delineation of such survey drawn to a scale of 100 feet to one inch with all dimensions shown thereon in feet and decimals. That all Block and Lots carry their own numerical designation. That the boundaries of the Subdivision and the Block corners are established with 5/8" X 3/16" iron rods and all other corners are established with 5/8" X 1/2" iron rods, all driven well into the ground. That the boundaries of the Subdivision are shown on the accompanying plat as a heavy solid line and all other lines are shown as dashed lines showing orientation of the adjoining platted areas thereto.

WITNESS MY HAND AND SEAL this 15th day of April 1973.



Kenneth George Roberts
 Kenneth George Roberts, Scottsbluff, Nebraska
 Nebraska Registered Land Surveyor L.S. 33

D E D I C A T I O N

We, the undersigned, being the owners of that part of the South-half of the Southeast Quarter (SE 1/4) of Section Nine (9), Township Twenty-two (22) North, Range Fifty-five (55) West of the 6th P.M., in Scotts Bluff County, Nebraska, more particularly described in the accompanying plat and Surveyor's certificate, have caused such real estate to be surveyed and platted as a part of KENNEDY HILL SUBDIVISION as shown on such accompanying plat.

We hereby dedicate the streets, avenues and alleys designated upon and referred to in such plat to the use and benefit of the public. The foregoing subdivision of real estate and the streets and alleys and building setbacks as appears on the accompanying plat is made with the free consent and in accordance with the desires of the undersigned owners.
 Dated this 2nd day of October 1973.

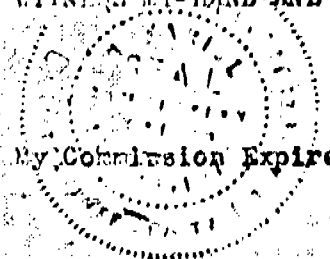
Kenneth Dill
 Kenneth Dill

Elinor Dill
 Elinor Dill

A C K N O W L E D G E M E N T

STATE OF NEBRASKA)
) ss:
 SCOTTS BLUFF COUNTY)

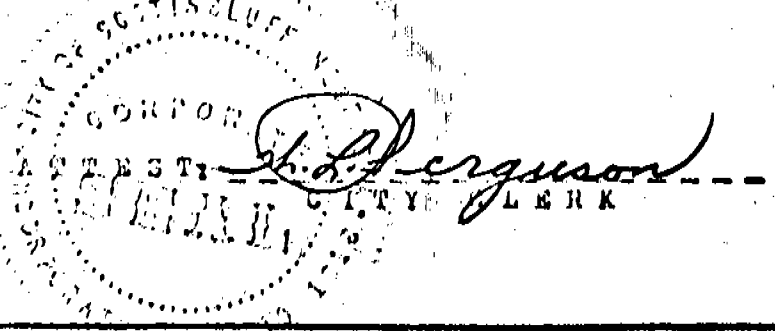
Now on this 2nd day of October 1973, before me, a Notary Public duly commissioned, qualified and residing in said County personally came Kenneth Dill and Elinor Dill, husband and wife, by me known to be the identical persons whose names are affixed to the above dedication and acknowledged the same to be their voluntary acts and deeds.
 WITNESS MY HAND AND SEAL this 1st day of October 1973.



Kenneth Dill
 N O T A R Y P U B L I C

A P P R O V A L A N D A C C E P T A N C E

The accompanying plat and dedication approved and accepted by the Mayor and City Council of the City of Scottsbluff, Nebraska, by resolution duly passed this 8th day of April 1974.



B. G. Thomas
 M A Y O R

1376