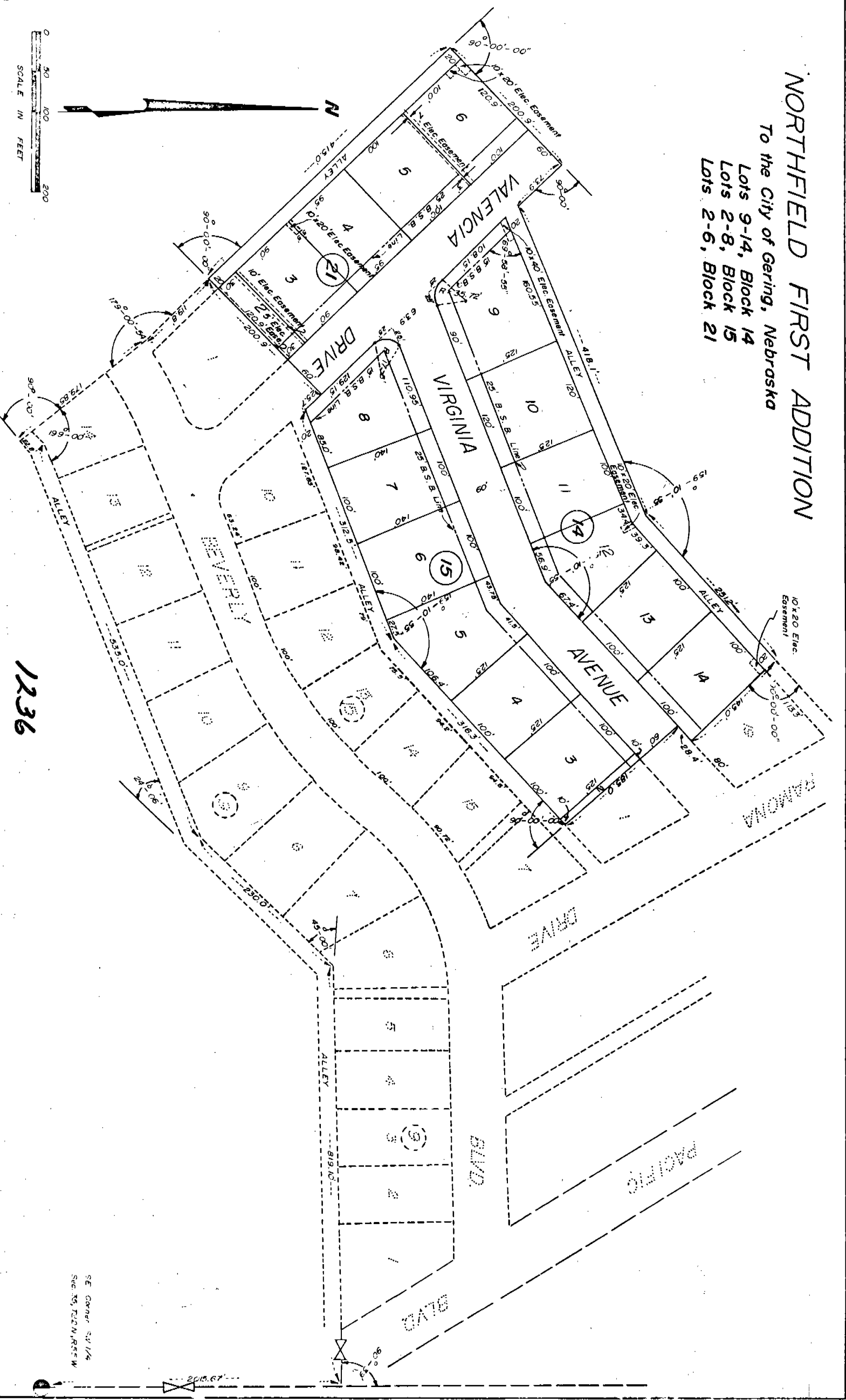


NORTHFIELD FIRST ADDITION

To the City of Gering, Nebraska
Lots 9-14, Block 14
Lots 2-8, Block 15
Lots 2-6, Block 21



1236

SE CORNER SW 1/4
SEC. 25, T22N, R55W

2015.67

SURVEYOR'S CERTIFICATE

I, M. C. Schaff, a competent Surveyor of Scotts Bluff County, Nebraska, hereby certify that I have surveyed and platted Northfield First Addition to the City of Gering, Nebraska, such Addition containing Lots Nine (9) through Fourteen (14), Block Fourteen (14), Lots Two (2) through Eight (8), Block Fifteen (15), and Lots Two (2) through Six (6), Block Twenty-One (21), situated in the Southwest Quarter (SW $\frac{1}{4}$) of Section Thirty-Five (35), Township Twenty-Two (22) North, Range Fifty-Five (55) West of the Sixth (6th) P.M., Scotts Bluff County, Nebraska. The boundary of such Addition being more particularly described as follows:

With reference to the Southeast corner of such SW $\frac{1}{4}$; then, North on the East Line of such SW $\frac{1}{4}$, a distance of 2,015.67 feet; then, a deflection angle to the left of 90 degrees 39 minutes, a distance of 819.10 feet; then, a deflection angle to the left of 45 degrees 00 minutes, a distance of 230 feet; then, a deflection angle to the right of 24 degrees 06 minutes, a distance of 535 feet; then, a deflection angle to the left of 19 degrees 00 minutes, a distance of 22.8 feet; then, a deflection angle to the right of 90 degrees 00 minutes, a distance of 179.85 feet; then, a deflection angle to the left of 00 degrees 59 minutes 06 seconds, a distance of 119.8 feet, to the POINT OF BEGINNING, such point of beginning being on the Western extension of Lot 1, Block 21, Northfield First Addition and the west side of an alley as platted; then, continuing North on the extension of the line last described, a distance of 415.0 feet; then, a deflection angle to the right of 90 degrees 00 minutes 00 seconds, a distance of 200.9 feet; then, a deflection angle to the right of 90 degrees 00 minutes 00 seconds, a distance of 73.9 feet; then, a deflection angle to the left of 69 degrees 58 minutes 55 seconds, a distance of 418.1 feet; then, a deflection angle to the left of 20 degrees 49 minutes 05 seconds, a distance of 251.2 feet; then, a deflection angle to the right of 90 degrees 00 minutes 00 seconds, a distance of 20 feet, to the Northwest corner of Lot 19, Northfield First Addition, as platted; then, continuing Southerly on the extension of the line last described, a distance of 125.0 feet, to the Southwest corner of such Lot 19; then, a deflection angle to the right of 90 degrees 00 minutes 00 seconds, a distance of 28.4 feet; then, a deflection angle to the left of 90 degrees 00 minutes 00 seconds, a distance of 185.0 feet to the Southwest corner of Lot 1, Block 15, Northfield First Addition, as platted; then, a deflection angle to the right of 90 degrees 00 minutes 00 seconds and on the North Line of the alley as previously platted in Block 15, a distance of 316.3 feet; then, a deflection angle to the right of 20 degrees 49 minutes 05 seconds, a distance of 312.5 feet to the East Line of Valencia Drive; then, Northwesterly along the East Line of such Valencia Drive, a distance of 25.7 feet; then, a deflection angle to the left of 90 degrees 00 minutes 00 seconds, a distance of 200.9 feet, to the point of beginning; containing an area of 4.08 acres, more or less.

That the tract as above described contains Lots Nine (9) through Fourteen (14), Block Fourteen (14), Lots Two (2) through Eight (8), Block Fifteen (15), Lots Two (2) through Six (6), Block Twenty-One (21) and portions of Valencia Drive, Virginia Avenue and Alleys as platted as part of this Subdivision. That the accompanying Plat is a true delineation of such survey and Subdivision, drawn to a scale of 100 feet to the Inch; that all corners are marked with 3/4"

1236

181

x 36" iron rods; that all dimensions are in feet and decimals and all lots and blocks bear its own number; that the boundary of the Subdivision is shown on the Plat with a heavy solid line.

WITNESS MY HAND AND SEAL this 6th Day of November, 1973.



M. C. Schaff

M. C. SCHAFF, NEBRASKA REGISTERED LAND
SURVEYOR, L. S. 233

DEDICATION AND ANNEXATION

We, the undersigned, being the Owners of that part of the Southwest Quarter (SW $\frac{1}{4}$) of Section Thirty-Five (35), Township Twenty-Two (22) North, Range Fifty-Five (55) West of the Sixth (6th) P.M., Scotts Bluff County, Nebraska, as described in the foregoing Surveyor's Certificate, and shown by the accompanying Plat and caused such real estate to be surveyed and platted as NORTHFIELD FIRST ADDITION to the City of Gering, Nebraska, we hereby dedicate the drives, avenues, alleys, easements and building setback lines shown and referred to in the Plat to the use and benefit of the public and further annex and make such real estate a part of the City of Gering, Nebraska.

The above described and foregoing Subdivision and the drives, avenues, alleys and building setback lines designated upon are made with the free consent and in accordance with the desires of the undersigned Owners.

Dated this 12 day of November, 1973.



DOMI DEVELOPMENT COMPANY, INC.

By William C. Davis
William C. Davis, President

Richard H. Peters
Secretary

ACKNOWLEDGEMENT

STATE OF NEBRASKA)
SCOTTS BLUFF COUNTY) ss

Before me, a Notary Public, qualified and acting in such County, personally came William C. Davis, President of Dome Development Company, Inc., a Nebraska Corporation, to me known to be the identical person and President of such Corporation, has signed the foregoing Dedication and Annexation and acknowledged the execution thereof to be his voluntary act and deed, and the voluntary act and deed of the Corporation.

WITNESS MY HAND AND NOTARIAL SEAL this 12 day of Nov., 1973.



EVELYN METER
GENERAL NOTARY - State of Nebr.
My Commission Expires
January 25, 1977

Signed: Evelyn Meter
Notary Public

My Commission Expires: Jan 25, 1977

182

APPROVAL AND ACCEPTANCE

The foregoing Plat of Northfield First Addition, an addition to the City of Gering, Nebraska, hereby approved by Ordinance No. 818, duly passed this 25th day of March, ~~1973~~ 1974

Signed W. Richard Probst
Mayor

ATTEST:

Paul M. Brown
City Clerk

NUMERICAL
GENERAL
TAX REG.
PICTURED



State of Nebraska, Scotts Bluff Co. ss.
Entered in Numerical Index and filed for
record the 4 day of April, 1974
at 1:16 o'clock P. M., and recorded in
Book 143 of Deeds
on page 179
Mary Jo Kellie
Register of Deeds
By _____ Deputy