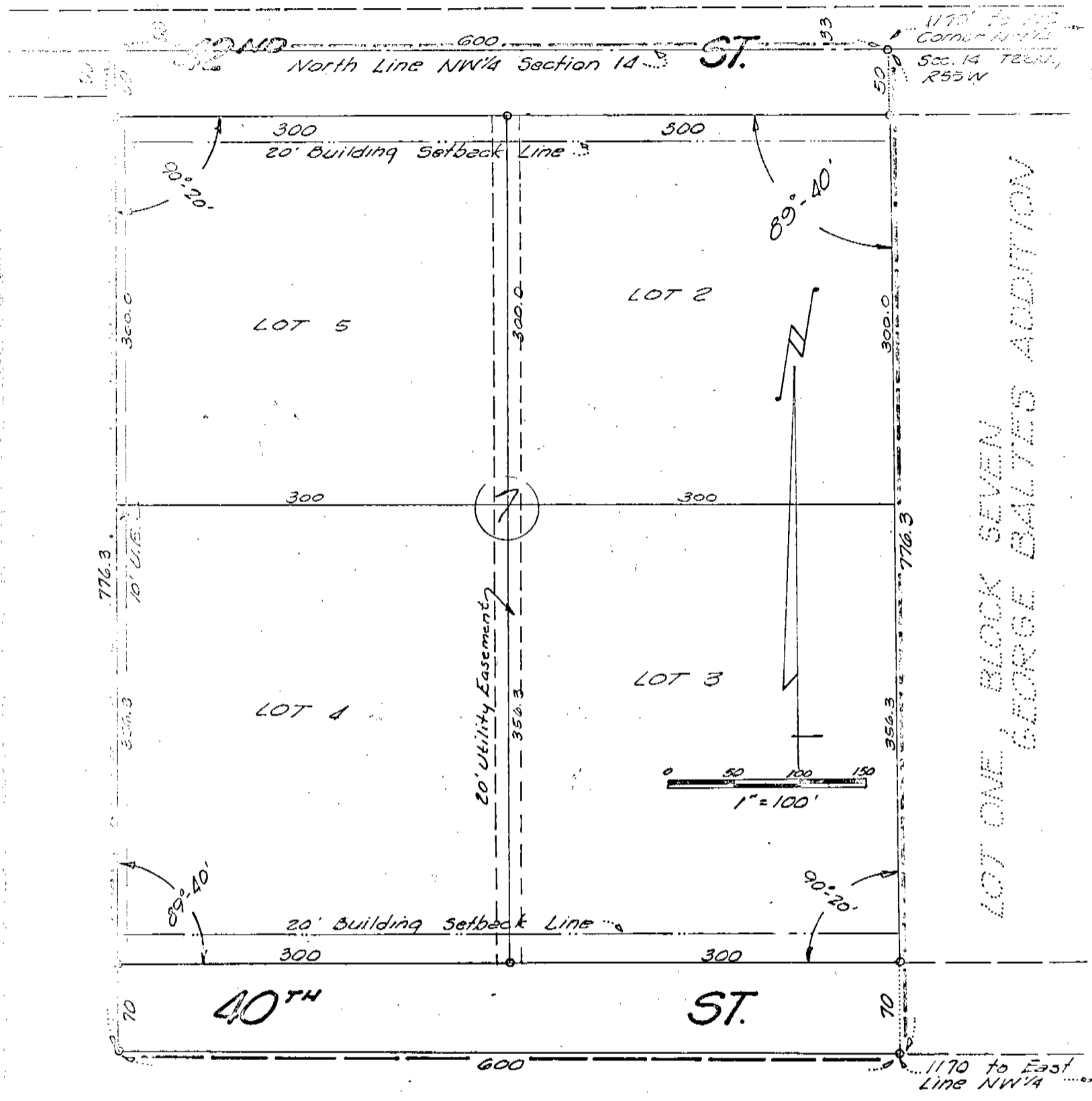


GEORGE BALTES ADDITION
 TO THE CITY OF SCOTTSBLUFF, SCOTTS BLUFF COUNTY, NEBRASKA
 LOTS 2, 3, 4 and 5, BLOCK 7

PART OF THE NW 1/4 OF SECTION 14, TOWNSHIP 22 NORTH,
 RANGE 55 WEST OF THE 6TH P.M., SCOTTS BLUFF COUNTY, NEBR.



LOT ONE BLOCK SEVEN GEORGE BALTES ADDITION

SURVEYOR'S CERTIFICATE

I, RONALD L. VOGEL, A COMPETENT SURVEYOR OF SCOTTS BLUFF COUNTY, NEBRASKA, HEREBY CERTIFY THAT I HAVE SURVEYED LOTS 2, 3, 4 AND 5, BLOCK SEVEN (7), GEORGE BALTES ADDITION TO THE CITY OF SCOTTSBLUFF, NEBRASKA, AND PARTS OF STREETS AND AVENUES AND SHOWN ON THE ACCOMPANYING PLAT, ALL SITUATED ON A PART OF THE NORTHWEST QUARTER (NW¹/₄) OF SECTION FOURTEEN (14), TOWNSHIP TWENTY-TWO (22) NORTH, RANGE FIFTY-FIVE (55) WEST OF THE 6TH P.M., SCOTTS BLUFF COUNTY, NEBRASKA, THE BOUNDARY OF SUCH SUBDIVISION BEING MORE PARTICULARLY DESCRIBED AS FOLLOWS:

BEGINNING AT A POINT ON THE NORTH LINE OF SUCH NW¹/₄, SUCH POINT BEING 1170 FEET WEST OF THE NORTHEAST CORNER OF SUCH NW¹/₄, THENCE SOUTH AND PARALLEL TO THE EAST LINE OF SUCH NW¹/₄ A DISTANCE OF 776.3 FEET; THENCE ANGLE RIGHT 89 DEGREES 40 MINUTES, PARALLEL TO THE NORTH LINE OF SUCH NW¹/₄ A DISTANCE OF 600 FEET; THENCE ANGLE RIGHT 90 DEGREES, 20 MINUTES, PARALLEL WITH THE EAST LINE OF SUCH NW¹/₄ A DISTANCE OF 776.3 FEET TO THE NORTH LINE OF SUCH NW¹/₄; THENCE ANGLE RIGHT 89 DEGREES 40 MINUTES ALONG SUCH NORTH LINE A DISTANCE OF 600 FEET TO THE POINT OF BEGINNING, CONTAINING AN AREA OF 10.69 ACRES MORE OR LESS OF DEEDED LAND,

THAT THE ACCOMPANYING PLAT IS A TRUE DELINEATION OF SUCH SURVEY DRAWN TO A SCALE OF 100 FEET TO THE INCH, THAT ALL DIMENSIONS ARE IN FEET AND DECIMALS, THAT EACH LOT AND BLOCK BEARS ITS OWN NUMBER, THAT 5/8" X 18" IRON ROD ARE DRIVEN WELL INTO THE GROUND AT ALL CORNERS, THAT THE BOUNDARY OF THE SUBDIVISION IS SHOWN ON THE PLAT WITH A HEAVY DOTTED LINE.

WITNESS MY HAND AND SEAL THIS 27TH DAY OF FEBRUARY, 1969.

Ronald L. Vogel
RONALD L. VOGEL
NEBRASKA REGISTERED LAND SURVEYOR
L.S. 266

DEDICATION & ANNEXATION

WE, THE UNDERSIGNED, BEING THE OWNERS OF THAT PART OF THE NORTHWEST QUARTER (NW¹/₄) OF SECTION 14, TOWNSHIP 22 NORTH, RANGE 55 WEST OF THE 6TH P.M. IN SCOTTS BLUFF COUNTY, NEBRASKA, HAVE CAUSED SUCH REAL ESTATE TO BE SURVEYED AND PLATTED AS LOTS 2, 3, 4 & 5, BLK. 7, GEORGE BALTES ADDITION TO THE CITY OF SCOTTSBLUFF, SCOTTS BLUFF COUNTY, NEBRASKA, AS SHOWN BY THE ACCOMPANYING PLAT AND SURVEYOR'S CERTIFICATE.

THE ABOVE DESCRIBED AND FOREGOING SUBDIVISION OF GEORGE BALTES ADDITION AND THE STREETS AND AVENUES AS APPEARS ON THIS PLAT IS MADE WITH THE FREE CONSENT AND IN ACCORDANCE WITH THE DESIRES OF THE UNDERSIGNED OWNERS.

WE HEREBY DEDICATE THE STREETS AND AVENUES DESIGNATED UPON AND REFERRED TO IN THE SAID PLAT TO THE USE AND BENEFIT OF THE PUBLIC AND FURTHER ANNEX AND MAKE SAID REAL ESTATE A PART OF THE CITY OF SCOTTSBLUFF, NEBRASKA.

DATED THIS 26 DAY OF OCTOBER, 1969.

SCOTTS BLUFF COUNTY

William E. Nichol
WILLIAM E. NICHOL, CHAIRMAN
SCOTTS BLUFF CO. BOARD OF COMMISSIONERS

Mamie Maxwell



EMMA BALTES SIMONTON AND LARRY SIMONTON (W & H); LYDIA BALTES, WIFE OF LAWRENCE G. BALTES; HAROLD R. BALTES AND IDA BALTES, (H & W); MAMIE BALTES FEIDLER, FORMERLY MAMIE BALTES BOONE, AN UNMARRIED PERSON; ROBERT GEORGE BALTES AND ELAINE BALTES (H & W); RICHARD LEE BOONE AND MOLLIE BOONE, (H & W); RITA GERALDINE BALTES BARKO AND ARTHUR BARKO, (W & H); THOMAS LEE BALTES AN UNMARRIED PERSON; KENNETH JOHN BALTES AND JANET BALTES, (H & W) AND JUNE MURPHY FORMERLY JUNE BOONE AND HAROLD MURPHY, (W & H)

BY *Lawrence G. Balters*
LAWRENCE G. BALTES, ATTORNEY-IN-FACT

Lawrence G. Balters
LAWRENCE G. BALTES

1138

ACKNOWLEDGEMENT

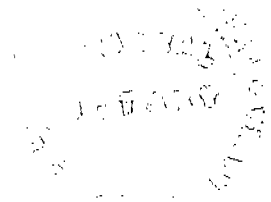
STATE OF NEBRASKA }
SCOTTS BLUFF COUNTY } SS

BEFORE ME, A NOTARY PUBLIC QUALIFIED AND ACTING IN SAID COUNTY, PERSONALLY CAME WILLIAM E. NICHOL, CHAIRMAN OF SCOTTS BLUFF COUNTY BOARD OF COMMISSIONERS, NEBRASKA; AND LAWRENCE G. BALTES, ATTORNEY IN FACT FOR EMMA BALTES SIMONTON AND LARRY SIMONTON (W & H); LYDIA BALTES; HAROLD R. BALTES AND IDA BALTES (H & W); MAMIE BALTES FEIDLER, FORMERLY MAMIE BALTES BOONE, AN UNMARRIED PERSON, ROBERT GEORGE BALTES AND ELAINE BALTES (H & W); RICHARD LEE BOONE AND MOLLIE BOONE, (H & W); RITA GERALDINE BALTES PARKO AND ARTHUR PARKO (W & H); KENNETH JOHN BALTES AND JANET BALTES (H & W); AND JUNE MURPHY, FORMERLY JUNE BOONE AND HAROLD MURPHY (W & H); AND LAWRENCE G. BALTES, INDIVIDUALLY TO ME KNOWN TO BE THE IDENTICAL PERSONS WHO SIGNED THE FOREGOING INSTRUMENTS AS SUCH PERSONS AND AS THE VOLUNTARY ACT AND DEED OF SAID COUNTY BOARD OF COMMISSIONERS, SCOTTS BLUFF COUNTY, NEBRASKA AND LAWRENCE G. BALTES, AS ATTORNEY-IN-FACT AND AS AN INDIVIDUAL.

WITNESS MY HAND AND SEAL THIS 26 DAY OF OCTOBER, 1969.

Robert E. Berggren
NOTARY PUBLIC

MY COMMISSION EXPIRES THE 20 DAY OF May, 1970.



APPROVAL

THE ACCOMPANYING PLAT AND DEDICATION APPROVED AND ACCEPTED BY THE MAYOR AND CITY COUNCIL OF THE CITY OF SCOTTSBLUFF, NEBRASKA, BY RESOLUTION DULY PASSED THIS 25th DAY OF March, 1974.

ATTEST: A. P. Ferguson

L. A. Thomas
MAYOR

SEAL:



NUMERICAL
GENERAL
TAX REG.
PICTURED

State of Nebraska, Scotts Bluff Co. ss.
Entered in Numerical Index and filed for
record the 1 day of April, 1974
at 1:40 o'clock P. M., and recorded in
Book 143 of Deeds
on page 120
Mary J. Ellis
Register of Deeds
By _____ Deputy