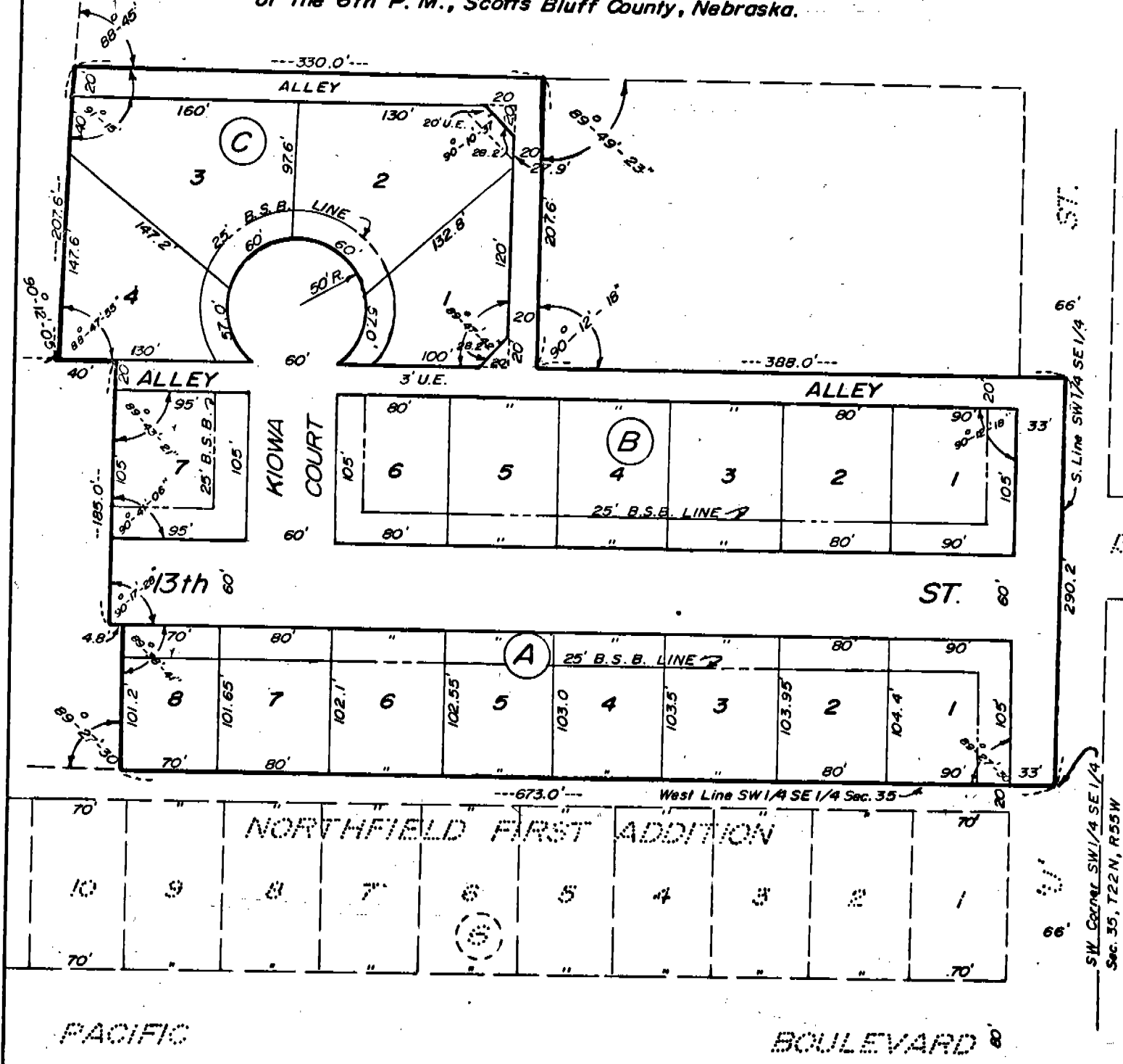


EWING SECOND ADDITION

3131

A Subdivision in the City of Gering, Nebraska, Block A,
 Lots 1-8, Block B, Lots 1-7, & Block C, Lots 1-4
 situated on part of the SW 1/4 SE 1/4 Section 35, T22N, R55W,
 of the 6th P. M., Scotts Bluff County, Nebraska.



STATE OF NEBRASKA }
 SCOTTS BLUFF COUNTY } ss.

Entered on Numerical Index and filed for
 record the 23 day of July
 1913, at 1:55 o'clock P. M., and
 recorded in Book 141 of

Reck
 Records on Page 85

Mary Jo Ellis
 REGISTER OF DEEDS

By Opal J. Clark Deputy

NUMERICAL
 GENERAL
 TAX REG.
 PICTURED

NUMERICAL
 GENERAL
 TAX REG.
 PICTURED

N

0 100 200
 Scale in Feet
 1" = 100'

5.89 Acres

3131

SURVEYOR'S CERTIFICATE

I, Ronald L. Vogel, a competent surveyor of Scotts Bluff County, Nebraska hereby certify that I have surveyed Ewing Second Addition, Lots One through Eight, Block A, Lots One through Seven, Block B and Lots One through Four, Block C, situated on part of the Southwest Quarter of the Southeast Quarter (SW $\frac{1}{4}$ SE $\frac{1}{4}$) of Section Thirty-Five (35), Township Twenty-Two (22) North, Range Fifty-Five (55) West of the Sixth (6th) P.M., Scotts Bluff County, Nebraska, the boundary of such subdivision being more particularly described as follows:

Beginning at the Southwest corner of such SW $\frac{1}{4}$ SE $\frac{1}{4}$; then, North on the West Line of such SW $\frac{1}{4}$ SE $\frac{1}{4}$, a distance of 673.0 feet; then, a deflection angle to the right of 89 degrees 27 minutes 30 seconds, a distance of 101.2 feet; then, a deflection angle to the left of 89 degrees 38 minutes 41 seconds, a distance of 4.8 feet; then, a deflection angle to the right of 89 degrees 42 minutes 32 seconds, a distance of 185.0 feet; then, a deflection angle to the left of 89 degrees 43 minutes 21 seconds, a distance of 40.0 feet; then, a deflection angle to the right of 91 degrees 12 minutes 05 seconds, a distance of 207.6 feet; then, a deflection angle to the right of 88 degrees 45 minutes, a distance of 330.0 feet; then, a deflection angle to the right of 89 degrees 49 minutes 23 seconds, a distance of 207.6 feet; then, a deflection angle to the left of 89 degrees 47 minutes 42 seconds, a distance of 388.0 feet to the South Line of such SW $\frac{1}{4}$ SE $\frac{1}{4}$; then, West on the South Line of such SW $\frac{1}{4}$ SE $\frac{1}{4}$, a distance of 290.2 feet to the point of beginning, containing an area of 5.89 acres, more or less.

That the accompanying plat is a true delineation of such survey drawn to a scale of 100 feet to the inch. That all corners are marked with 3/4" x 18" iron rods and that all dimensions are in feet and decimals. That each Lot and Block bears its own number or letter and that the boundary of the subdivision is shown on the plat with a heavy solid line.

WITNESS MY HAND AND SEAL this 9th day of July, 1973.



Ronald L. Vogel
Ronald L. Vogel,
Nebraska Registered Land
Surveyor, L.S. 266

DEDICATION AND ANNEXATION

We, the undersigned being the Owners of that part of the SW $\frac{1}{4}$ SE $\frac{1}{4}$ of Section 35, Township 22 North, Range 55 West of the 6th P.M., Scotts Bluff County, Nebraska, as described in the foregoing "Surveyor's Certificate" and shown by the accompanying plat have caused such real estate to be surveyed and platted as Ewing Second Addition, Lots 1 through 8, Block A, Lots 1 through 7, Block B and Lots 1 through 4, Block C, an Addition to the City of Gering, Nebraska.

We hereby dedicate the streets, Avenues, Courts, Alleys, Easements and Building Setback Designations shown on and referred to in the plat to the use and benefit of the public and further annex and make such real estate a part of the City of Gering, Nebraska.

The above described and foregoing subdivision and the Streets, Avenues, Courts, Alleys and Building Setback Designations is made with the free consent and in accordance with the desires of the undersigned Owners.

Dated this 9th day of July, 1973.

Telford M. Ewing
Telford M. Ewing

Helen W. Ewing
Helen W. Ewing

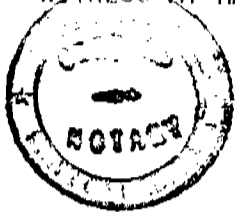
3131

ACKNOWLEDGEMENT

STATE OF NEBRASKA)
SCOTTS BLUFF COUNTY) SS

Before me, a Notary Public, qualified and acting in such County, personally came Telford M. Ewing and Helen W. Ewing, husband and wife, to me known to be the identical persons who signed the foregoing "Dedication and Annexation" and acknowledged the execution thereof to be their voluntary act and deed.

WITNESS MY HAND AND SEAL this 9th day of July, 1973.



Bonnie L. Smith
Notary Public

My Commission Expires: June 13, 1976

APPROVAL AND ACCEPTANCE

The foregoing subdivision of Ewing Second Addition approved and accepted by the Mayor and City Council of the City of Gering, Nebraska by Ordinance No. 786 duly passed this 9th day of July, 1973.



W. Richard Prokes
Mayor

Richard Prokes
City Clerk