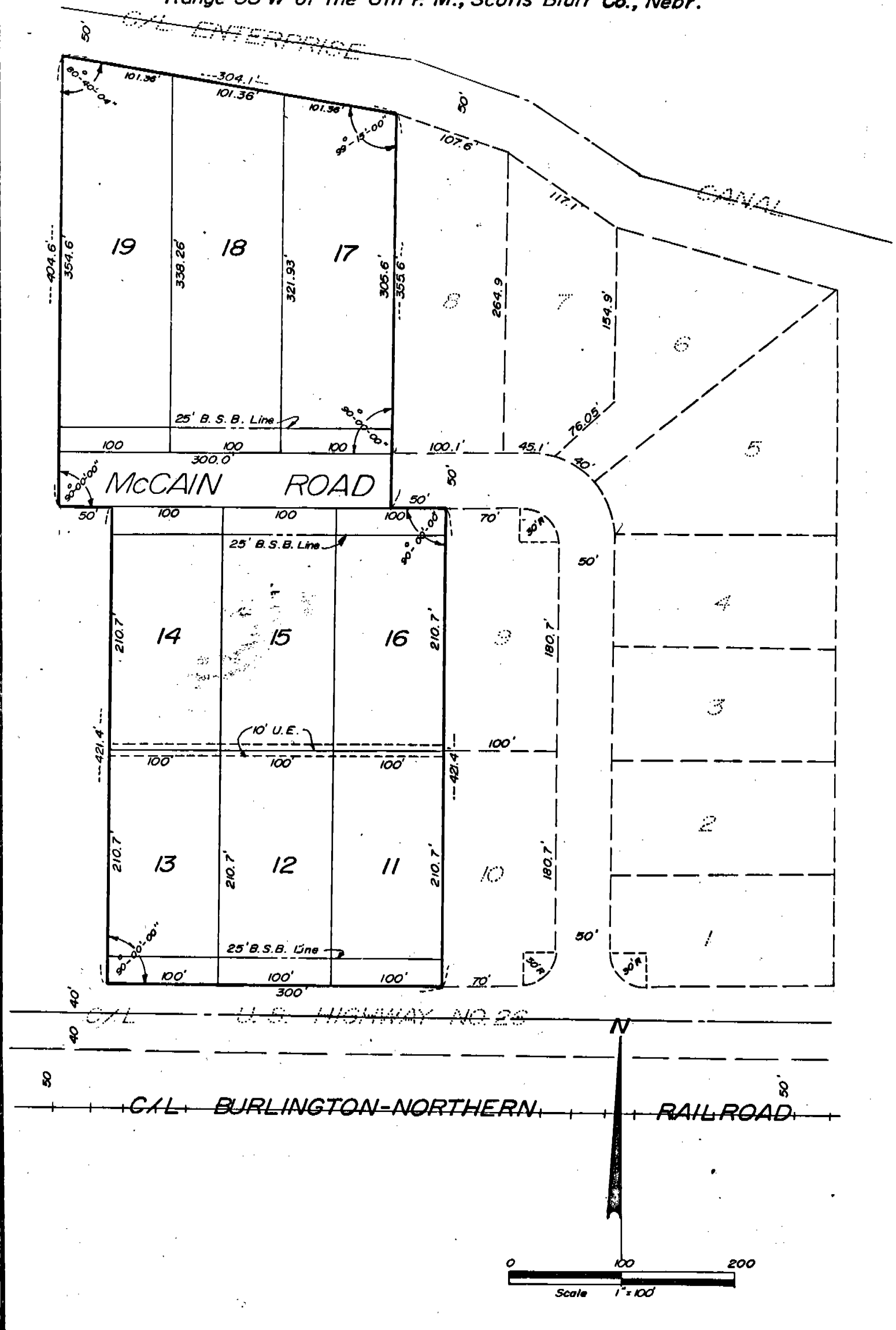


Map of McCain Road

SUBDIVISION & REPLAT OF PART OF TRACT 16 3565

H & M SUBDIVISION

Situated in the SW 1/4 Section 31, Township 23 N,
Range 55 W of the 6th P. M., Scotts Bluff Co., Nebr.



3565

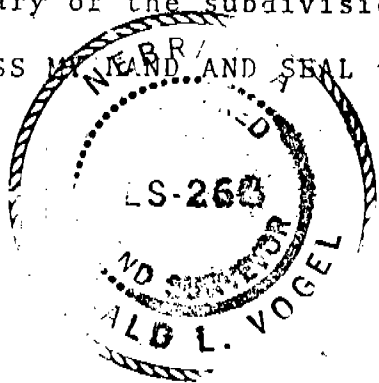
SURVEYOR'S CERTIFICATE

I, Ronald L. Vogel, a competent surveyor of Scotts Bluff County, Nebraska, hereby certify that I have surveyed Lots 11 through 19, Subdivision and Replat of Part of Tract 16, H & M Subdivision, a part of the Southwest Quarter (SW $\frac{1}{4}$) of Section Thirty-one (31), Township Twenty-three (23) North Range Fifty-five (55) West of the 6th P. M., Scotts Bluff County, Nebraska, the boundary of such subdivision being more particularly described as follows:

Referring to the Southeast corner of the aforesaid Tract 16; then West on the South line of such Tract 16 a distance of 350.0 feet to the point of beginning, then a deflection angle right of 90 degrees 00 minutes a distance of 50.0 feet; then a deflection angle right of 90 degrees 00 minutes a distance of 355.6 feet to the South Right of Way Line of the Enterprise Canal; then a deflection angle left of 80 degrees 45 minutes 00 seconds along such Right of Way line, a distance of 304.1 feet; then a deflection angle left of 99 degrees 19 minutes, 56 seconds a distance of 404.6 feet; then a deflection angle to the left of 90 degrees 00 minutes 00 seconds, a distance of 50.0 feet; then a deflection angle right of 90 degrees 00 minutes, a distance of 421.4 feet to the South line of such Tract 16, then East on the South line of such Tract 16 a distance of 300.0 feet to the point of beginning, containing an area of 5.52 acres, more or less.

That the accompanying plat is a true delineation of such survey drawn to a scale of 100 feet to the inch. That all corners are marked with 5/8" iron rods and that all dimensions are in feet and decimals. That the boundary of the subdivision is shown on the plat with a heavy solid line.

WITNESS MY HAND AND SEAL this 12th day of July, 1973.



Ronald L. Vogel
RONALD L. VOGEL, NEBRASKA REGISTERED
LAND SURVEYOR, L. S. 266

OWNER'S STATEMENT

We, the undersigned, being the owners of Tract 16, H and M Subdivision, a part of the SW $\frac{1}{4}$ of Section 31, Township 23 North, Range 55 West of the 6th P. M., Scotts Bluff County, Nebraska have caused such real estate to be subdivided and replatted as Lots 11 through 19, Subdivision and Replat of part of Lot 16, H and M Subdivision.

That above described and foregoing subdivision and the Roads and Easements as appear on the plat is made with the free consent and in accordance with the desires of the undersigned owners.

We hereby dedicate the roads designated upon and referred to in the plat to the use and benefit of the public.

Dated this 18th day of July, 1973.

James A. McCain
JAMES A. MCCAIN

274

SUBDIVISION AND REPLAT OF PART OF TR. 16
H & M SUBDIVISION

CONTINUATION SHEET 3

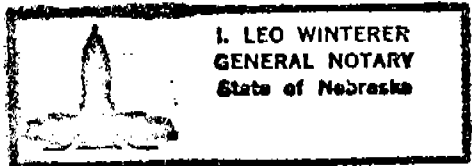
3565

ACKNOWLEDGEMENT

STATE OF NEBRASKA)
SCOTTS BLUFF COUNTY) ss

Before me, a Notary Public, qualified in such County, personally came James A. McCain, a single person, to me known to be the identical person whose name is affixed to the foregoing "Owner's Statement" and acknowledged the execution thereof to be his voluntary act and deed.

WITNESS MY HAND AND NOTARIAL SEAL this 18th day of July 1973.



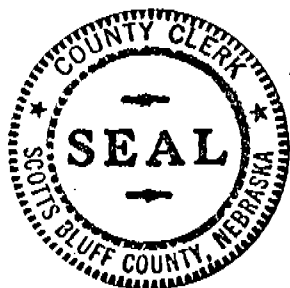
L. Leo Winterer
NOTARY PUBLIC

MY COMMISSION EXPIRES: November 14, 1976

APPROVAL AND ACCEPTANCE

The foregoing subdivision approved and accepted by the Chairman and County Board of Commissioners with the exception that the County assumes no responsibility for the maintenance of roads within such subdivision.

By Resolution dated this 13 day of August, 1973.



ATTEST:

Merna Maxwell
County Clerk

Ernest A. Lockwood
Chairman

NUMERICAL
GENERAL
TAX REG. /
PICTURED

STATE OF NEBRASKA }
SCOTTS BLUFF COUNTY } ss.

Entered on Numerical Index and filed for record the 16 day of August 1973, at 2:30 o'clock P. M., and recorded in Book 141 of

Deeds
Records on Page 272
Mary Jo Ellis
REGISTER OF DEEDS

By _____ Deputy