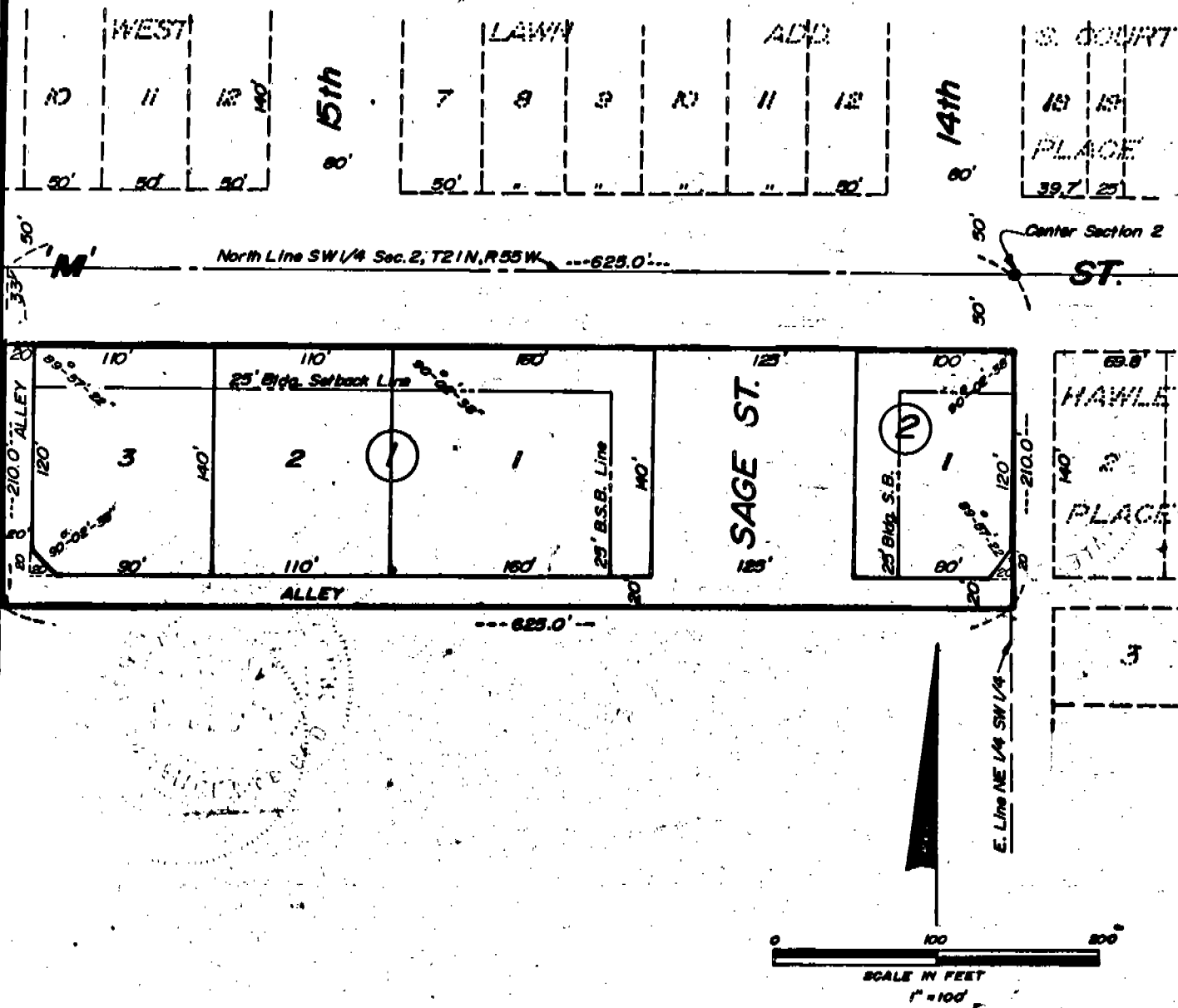


284

# PIONEER PLAZA

2033

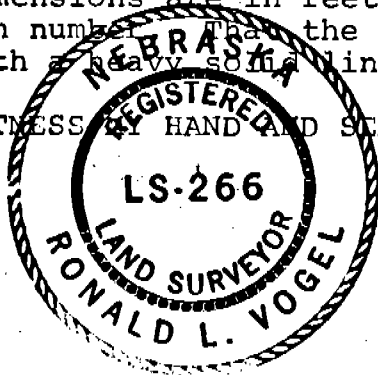
Lots 1, 2, & 3, Block 1, and Lot 1, Block 2, City of Gering, Nebraska situated in the NE 1/4 SW 1/4 of Section 2, T21 N, R55 W of the 6th P.M.



### SURVEYOR'S CERTIFICATE

I, Ronald L. Vogel, a competent surveyor of Scotts Bluff County Nebraska, hereby certify that I have surveyed Pioneer Plaza, Lots One Two, and Three Block One and Lot One, Block Two, and portions of 'M' Street and Sage Street therein, an Addition to the City of Gering, Nebraska, situated on part of the Northeast Quarter of the Southwest Quarter (NE 1/4 SW 1/4) of Section Two, (2), Township Twenty-one (21) North, Range Fifty-five (55) West of the 6th P. M., Scotts Bluff County, Nebraska the boundary of such subdivision being more particularly described as follows: Beginning at the Northeast corner of such NE 1/4 SW 1/4; then South on the East Line of such NE 1/4 SW 1/4 a distance of 210.0 feet; then a deflection angle to the right of 90 degrees 02 minutes 38 seconds a distance of 625.0 feet; then a deflection angle to the right of 89 degrees 57 minutes 22 seconds a distance of 210.0 feet to the North Line of such NE 1/4 SW 1/4; then East on the North Line of such NE 1/4 SW 1/4 a distance of 625.0 feet to the point of beginning, containing an area of 3.01 acres, more or less. That the accompanying plat is a true delineation of such survey and subdivision drawn to a scale of 100 feet to the inch. That all corners are marked with 5/8" x 18" iron rods and that all dimensions are in feet and decimals. That each Lot and Block bears its own number. That the boundary of the subdivision is shown on the plat with a heavy solid line.

WITNESS MY HAND AND SEAL this 24th day of March, 1973.



*Ronald L. Vogel*  
 RONALD L. VOGEL, NEBRASKA REGISTERED  
 LAND SURVEYOR, L. S. 266

PIONEER PLAZA  
BLOCK ONE, LOTS ONE, TWO, THREE  
BLOCK TWO, LOT ONE  
PARTS OF 'M' STREET AND SAGE ST.  
THEREIN

2033

DEDICATION AND ANNEXATION

We, the undersigned, being the owners of that part of the NE $\frac{1}{4}$ SW $\frac{1}{4}$  of Section 2, Township 21 North, Range 55 West of the 6th P. M., Scotts Bluff County, Nebraska, as shown by the accompanying plat and described in the foregoing "Surveyor's Certificate" have caused such real estate to be surveyed and platted as PIONEER PLAZA, LOTS ONE, TWO AND THREE, BLOCK ONE, AND LOT ONE, BLOCK TWO, AND PART OF 'M' STREET AND SAGE STREET THEREIN, an Addition to the City of Gering, Nebraska.

The foregoing subdivision of Pioneer Plaza, and the Streets, Alleys and Building Setback Designations shown on and referred to in the plat is made with the free consent and in accordance with the desires of the undersigned owners. We hereby dedicate the Streets and Alleys referred to and shown on the plat to the use and benefit of the public and further annex and make such real estate a part of the City of Gering, Nebraska.

Dated this 7<sup>th</sup> day of May 1973.

(SEAL)

PANHANDLE DEVELOPMENT CORPORATION

by: H. O. JONES, PRESIDENT

ATTEST: Wm. H. Hackman  
WM. H. HACKMAN, SECRETARY

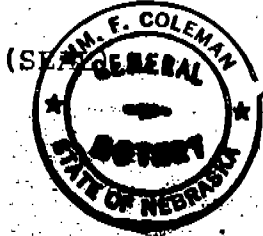
ACKNOWLEDGEMENT

STATE OF NEBRASKA)  
SCOTTS BLUFF COUNTY) ss

Before me, a Notary Public, qualified in such County, personally came H. O. Jones to me personally known to be the identical person and President of Panhandle Development Corporation, a Nebraska corporation and acknowledged the execution thereof to be his voluntary act and deed and the voluntary act and deed of such corporation:

WITNESS MY HAND AND NOTARIAL SEAL this 7<sup>th</sup> day of May 1973.

MY COMMISSION EXPIRES: April 7<sup>th</sup> 1975



Wm. F. Coleman

NOTARY PUBLIC

286

PIONEER PLAZA  
BLOCK ONE, LOTS ONE, TWO AND THREE  
BLOCK TWO, LOT ONE  
PART OF 'M' STREET AND SAGE STREET  
THEREIN

2033

APPROVAL AND ACCEPTANCE

The foregoing subdivision of Pioneer Plaza, approved by the Mayor and City Council of the City of Gering, Nebraska, by Ordinance No. 775 duly passed this 26<sup>th</sup> day of March, 1973.

(SEAL)

W. Richard Probert  
MAYOR

ATTEST:

Richard Brown  
CITY CLERK



STATE OF NEBRASKA } ss. W  
 SCOTTS BLUFF COUNTY }

Entered on Numerical Index and filed for record the 18 day of May 1973, at 3:00 o'clock P. M., and recorded in Book 140 of Deeds Records on Page 284

Mary Jo Ellis  
REGISTER OF DEEDS

By Bk 975 Deputy

NUMERICAL  
GENERAL  
TAX REG.  
PICTURED