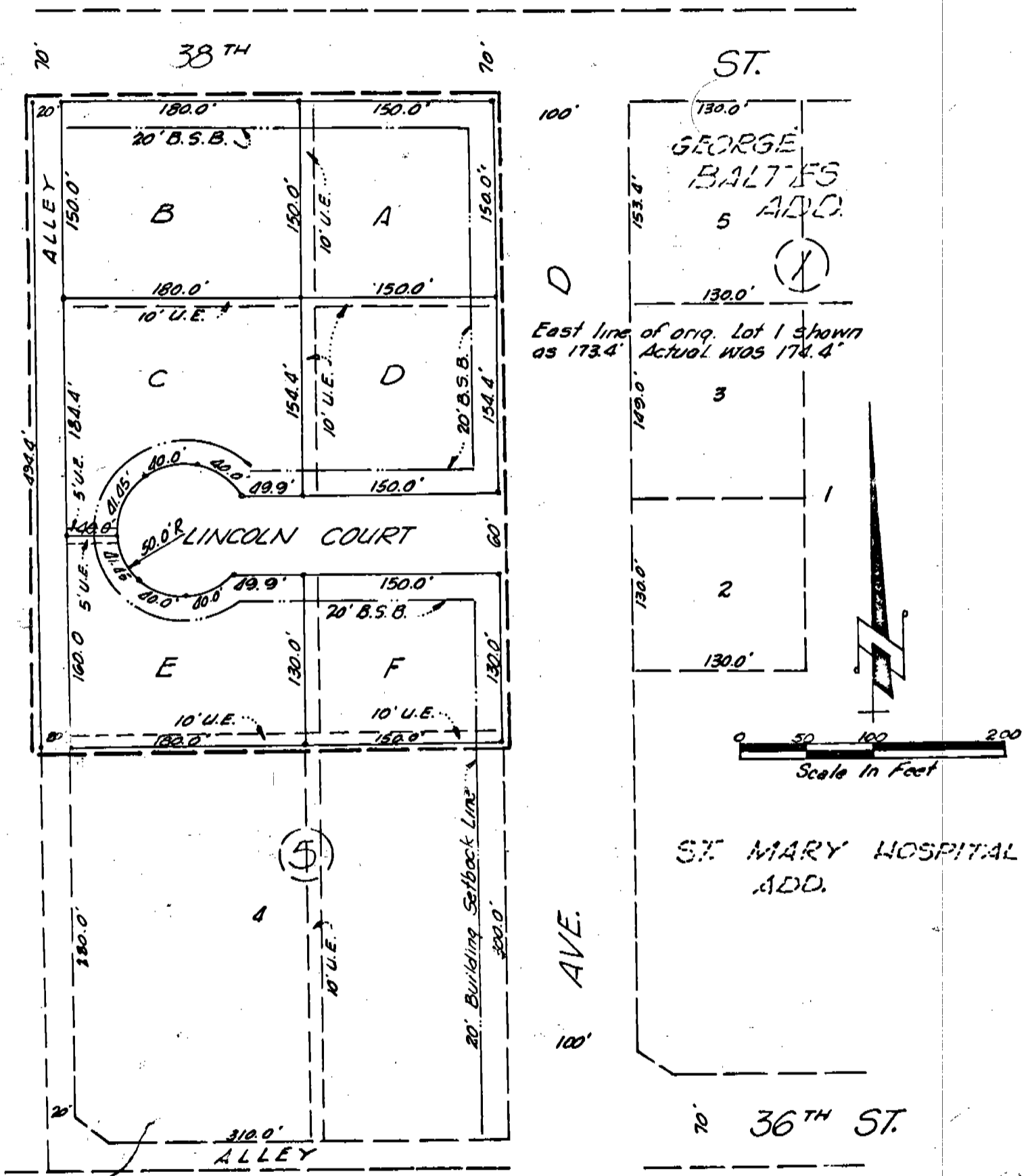


1917 Ordinance 1125  
Revised Map 81, 1917  
139 37'

Now platted as Lots A, B, C, D, E, + F  
Berggreen-Kleven Subdivision + replat.  
720

### LOTS A, B, C, D, E, AND F

A SUBDIVISION AND REPLAT OF LOTS 1, 2, AND 3, BLOCK 5, GEORGE BALTES ADDITION TO THE CITY OF SCOTTSBLUFF, NEBRASKA AND THE VACATED ALLEY THEREIN.



LOTS A, B, C, D, E and F  
A Subdivision and Replat of Lots 1, 2 and 3, Block 5, George Baltes  
Addition to the City of Scottsbluff and the vacated alley therein

Sheet 2 of 3

SURVEYOR'S CERTIFICATE

I, Ronald L. Vogel, a competent surveyor of Scotts Bluff County, Nebraska, hereby certify that I have surveyed Lots One (1), Two (2) and Three (3), Block Five (5), George Baltes Addition to the City of Scottsbluff, Nebraska and the vacated alley therein and have further subdivided and replatted such Lots 1, 2 and 3 and the vacated alley as Lots A, B, C, D, E and F, a subdivision and replat of Lots 1, 2 and 3, Block 5, George Baltes Addition and the vacated alley therein.

That the accompanying plat is a true delineation of such survey drawn to a scale of 100 feet to the inch.

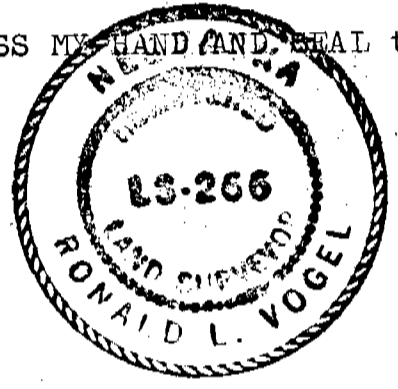
That each lot bears its own letter.

That all corners are marked with 5/8" x 18" iron rods.

That all dimensions are in feet and decimals.

That the boundary of the subdivision and replat is shown on the plat with a heavy dotted line and that adjoining subdivisions are shown in dotted lines for orientation purposes.

WITNESS MY HAND AND SEAL this 21st day of February, 1972.



*Ronald L. Vogel*  
RONALD L. VOGEL, NEBRASKA REGISTERED  
LAND SURVEYOR LS 266

DEDICATION

We, the undersigned, being the owners of Lots One, Two and Three, Block Five, George Baltes Addition to the City of Scottsbluff, Nebraska and the vacated alley therein have caused such Lots 1, 2 and 3 and the vacated alley to be surveyed and replatted as Lots A, B, C, D, E and F, a subdivision and replat of Lots 1, 2 and 3, Block 5, George Baltes Addition and the vacated alley therein.

The foregoing subdivision with the building setback designations, streets, alleys and easements is made with the free consent and in accordance with the desires of the undersigned owners.

We hereby dedicate the streets and alleys designated upon and referred to in the plat to the use and benefit of the public.

Dated this 24 day of February, 1972.

NORTHWOOD PARK, A PARTNERSHIP

*Bernhard Kleven*  
Bernhard Kleven, Partner

*Robert Berggren*  
Robert Berggren, Partner

METROPOLITAN DEVELOPMENT COMPANY  
A NEBRASKA CORPORATION

BY: *Bernhard Kleven*  
Bernhard Kleven, President

LOTS A, B, C, D, E and F  
A Subdivision and Replat of Lots 1, 2 and 3, Block 5, George Baltes  
Addition to the City of Scottsbluff and the vacated alley therein

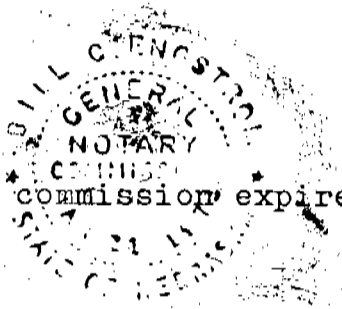
Sheet 3 of 3

ACKNOWLEDGEMENT

STATE OF NEBRASKA )  
SCOTTS BLUFF COUNTY ) ss

Before me, a Notary Public, qualified in said County, personally came Bernhard Kleven, president of Metropolitan Development Company, a Nebraska corporation and one of two partners in Northwood Park, a partnership and also came Robert Berggren, the second partner in Northwood Park, a partnership, known to me to be the identical persons and president of such corporation and partners in Northwood Park who signed the foregoing "Dedication" and acknowledged the execution thereof to be their voluntary act and deed and the voluntary act and deed of such corporation and the partnership and that the corporation seal was thereto affixed by its authority.

WITNESS MY HAND AND NOTARIAL SEAL this 24 day of February, 1972.



Bill C. Engstrom  
Notary Public

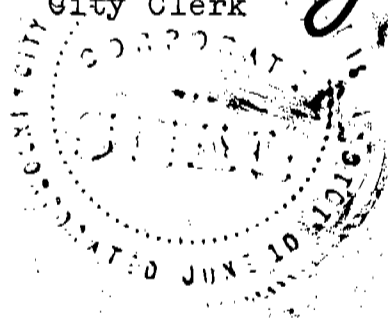
My commission expires: 3-21-73

APPROVAL AND ACCEPTANCE

The accompanying plat of Lots A, B, C, D, E and F, subdivision and replat of Lots 1, 2 and 3, Block 5, George Baltes Addition and the vacated alley therein and the foregoing "Dedication" approved by the Mayor and City Council of the City of Scottsbluff, Nebraska by resolution duly passed this 22 day of February, 1972.

R. A. Thomas  
Mayor

ATTEST A. L. Ferguson  
City Clerk



720

NUMERICAL  
GENERAL  
TAX REG.  
PICTURED

pe 9-50 720

STATE OF NEBRASKA } ss.  
SCOTTS BLUFF COUNTY }

Entered on Numerical Index and filed for record the 2 day of March

1972, at 10:35 o'clock A. M., and

recorded in Book 137 of

Deeds

Records on Page 69

Mary Jo Keller  
REGISTER OF DEEDS

By \_\_\_\_\_ Deputy