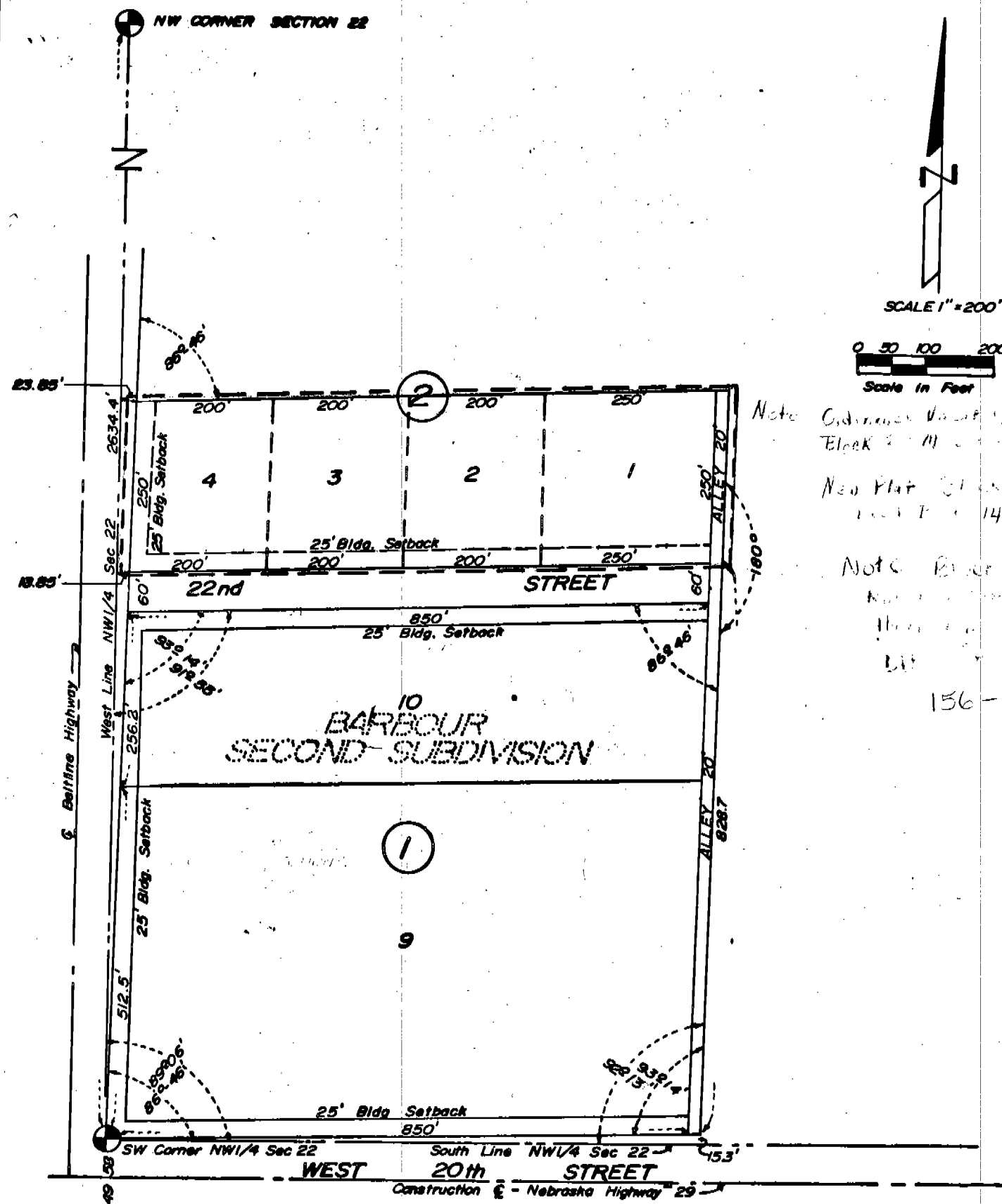


BARBOUR SECOND SUBDIVISION
BLOCK TWO - LOTS ONE THRU FOUR
 A SUBDIVISION OF PART OF THE NW 1/4 OF
 SECTION 22, T22N, R55W OF THE 6th P.M.,
 SCOTTS BLUFF COUNTY NEBRASKA.



SCALE 1" = 200'
 0 50 100 200
 Scale in Feet

Note Ordinance No. 17
 Block 2011
 New Plat 146-403
 Note Block 136-589

64	65	R. S. MUNTZ TRACTS		68	69	70
		66	67			

638

BARBOUR SECOND SUBDIVISION
LOTS 1 THROUGH 4, BLOCK 2

SURVEYOR'S CERTIFICATE

I, Ronald L. Vogel, a competent surveyor of Scotts Bluff County, Nebraska, hereby certify that I have surveyed "BARBOUR SECOND SUBDIVISION", Lots 1 through 4, Block Two, a subdivision of part of the Northwest Quarter (NW $\frac{1}{4}$) of Section Twenty-Two (22), Township Twenty-Two (22) North, Range Fifty-Five (55) West of the Sixth (6th) P.M., Scotts Bluff County, Nebraska, the boundary of such subdivision being more particularly described as follows:

With reference to the Southwest corner of such NW $\frac{1}{4}$, such corner also being the intersection of the East Right-of-Way line of the Beltline Highway and the North Right-of-Way line of Nebraska Highway No. 29; then, North on the East Right-of-Way line of the Beltline Highway, a distance of 828.7 feet to the point of beginning, such point being 18.85 feet East of the West line of such NW $\frac{1}{4}$; then, a deflection angle right of 86 degrees 46 minutes, a distance of 870.0 feet; then, a deflection angle left of 86 degrees 46 minutes, a distance of 250.0 feet; then, a deflection angle to the left of 93 degrees 14 minutes, a distance of 870.0 feet, such point being 23.85 feet East of the West line of such NW $\frac{1}{4}$; then, a deflection angle left of 86 degrees 46 minutes, along such Right-of-Way line, a distance of 250.0 feet to the point of beginning, containing an area of 4.99 acres, more or less.

That the accompanying plat is a true delineation of such survey drawn to a scale of 200 feet to the inch.

That each Block and Lot bears its own number.

That all corners are marked with 5/8" x 36" iron rods.

That all dimensions are in feet and decimals.

That the boundary of the subdivision is shown on the plat with a heavy dotted line.

MY HAND AND SEAL THIS 2nd day of June, 19 72.



Ronald L. Vogel
RONALD L. VOGEL,
NEBRASKA REGISTERED
LAND SURVEYOR, L.S. 266

SUBDIVISION, DEDICATION, RELINQUISHMENT

We, the undersigned, being the Owners of that part of the NW $\frac{1}{4}$ of Section 22, Township 22 North, Range 55 West of the 6th P.M., Scotts Bluff County, Nebraska, have caused such real estate to be surveyed and platted as "BARBOUR SECOND SUBDIVISION" Lots 1 through 4, Block Two, a subdivision of part of the NW $\frac{1}{4}$ of Section 22, Township 22 North, Range 55 West of the 6th P.M., Scotts Bluff County, Nebraska as shown on the accompanying plat and by the "Surveyor's Certificate".

The foregoing subdivision of real estate and the streets and alleys as appear on the accompanying plat is made with the free consent and in accordance with the desires of the undersigned Owners.

We hereby dedicate the streets and alleys designated upon and referred to in the accompanying plat to the use and benefit of the public, and hereby relinquish all right of access from the land in such subdivision to the Beltline Highway which parallels the West line of the subdivision, and from such Highway to the land in the subdivision except, indirectly, over 22nd Street as shown in the plat and over Nebraska Highway No. 29.

DATED THIS 5 day of JUNE, 19 72.

Lillian Elizabeth Barbour
LILLIAN ELIZABETH BARBOUR

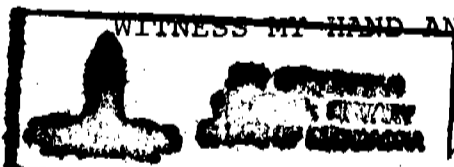
Wilburn Owen Barbour
WILBURN OWEN BARBOUR

State of Nebraska)
Scotts Bluff County) SS

ACKNOWLEDGEMENT

On this 5 day of JUNE, 19 72, before me, a Notary Public, in and for said County, personally came WILBURN OWEN BARBOUR and LILLIAN ELIZABETH BARBOUR, husband and wife, to me personally known to be the identical persons whose names are affixed to the foregoing "Subdivision, Dedication and Relinquishment", and acknowledged the same to be their voluntary act and deed.

WITNESS MY HAND AND NOTARIAL SEAL the day and year last written.



My commission expires 12-29-75

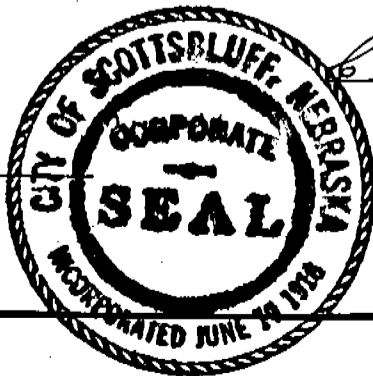
Jay Couchman
Notary Public

APPROVAL AND ACCEPTANCE

The foregoing plat of "BARBOUR SECOND SUBDIVISION" and the accompanying "Subdivision, Dedication and Relinquishment", approved and accepted by the Mayor and City Council of the City of Scottsbluff by resolution duly passed this 12th day of JUNE, 1972.

ATTEST:

A. L. Ferguson
City Clerk



W. A. Thomas
Mayor

STATE OF NEBRASKA, Scotts Bluff Co. ss.
Entered on Numerical Index and filed for record the 15 day of June, 19 72, at 1:00 o'clock P.M. and recorded in Book 137 of Deeds on Page

May 10 1972
REGISTER OF DEEDS