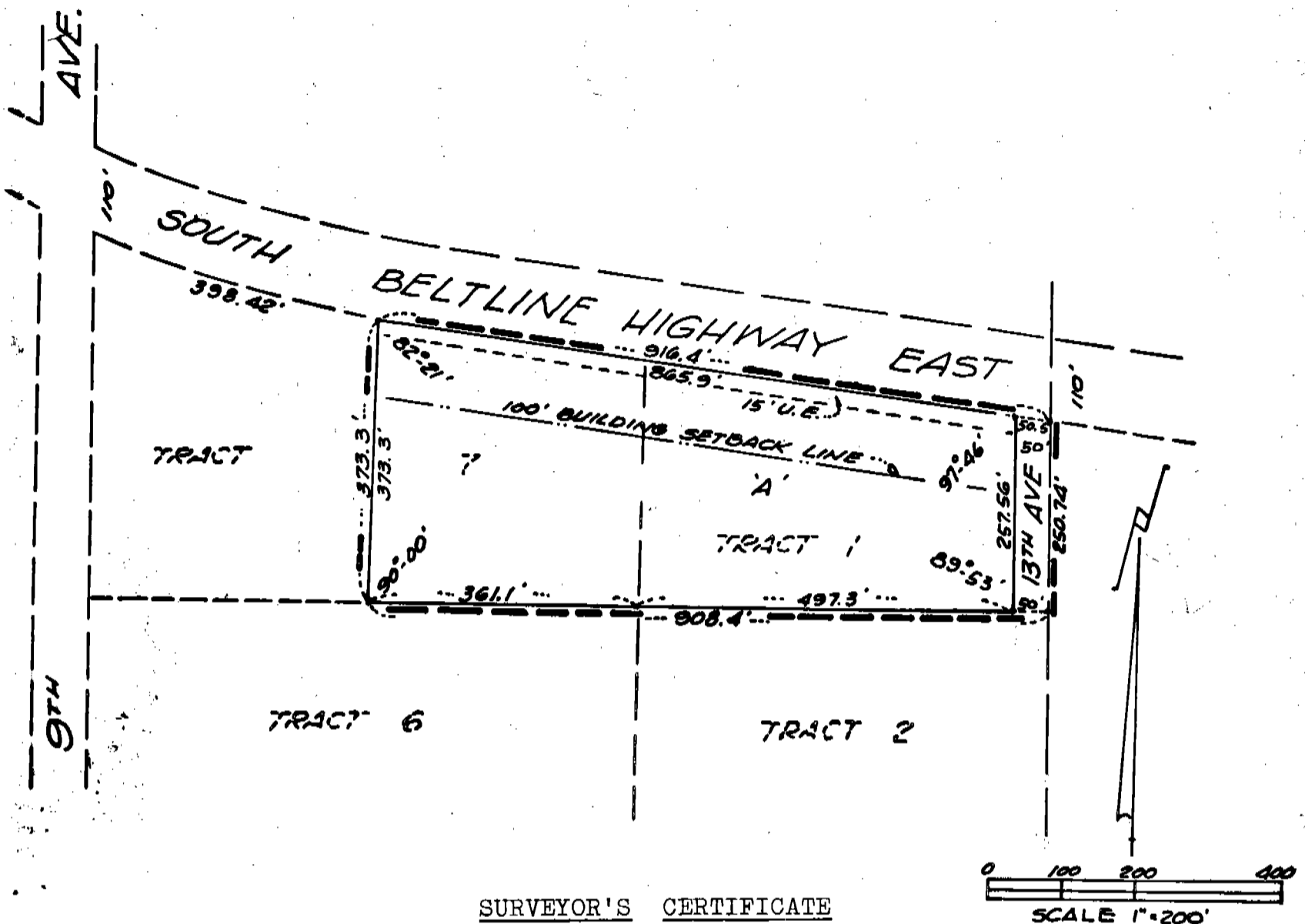


HEILBRUN SUBDIVISION

OF PART OF TRACTS 1 AND 7,
UNION LIVESTOCK ADDITION
TO THE CITY OF SCOTTSBLUFF, NEBR.

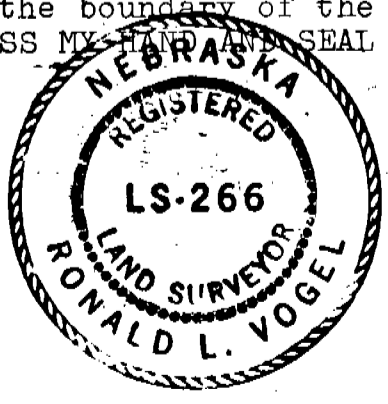


SURVEYOR'S CERTIFICATE

I, Ronald L. Vogel, a competent surveyor of Scotts Bluff County, Nebraska, hereby certify that I have surveyed HEILBRUN SUBDIVISION, Lot 'A', of part of Tracts One (1) and Seven (7), Union Livestock Addition to the City of Scottsbluff, Nebraska, the boundary of such Subdivision is more particularly described as follows:

Beginning at the Southeast corner of such Tract 7, Union Livestock Addition; then West on the South Line of such Tract 7 a distance of 361.1 feet; then a deflection angle to the right of 90 degrees 00 minutes a distance of 373.3 feet to the South Right of Way Line of the South Beltline Highway East; then in a Southeasterly direction, along such Right of Way Line, a distance of 916.4 feet to the East Line of Tract 1, Union Livestock Addition; then South on the East Line of such Tract 1 a distance of 250.74 feet to the Southeast corner of such Tract 1; then West on the South Line of such Tract 1 a distance of 547.3 feet to the point of beginning, containing an area of 6.5 acres, more or less.

That the above plat is a true delineation of such survey drawn to a scale of 200 feet to the inch. That all corners are marked with iron rods and that all dimensions are in feet and decimals. That each Tract bears its own number. That the boundary of the subdivision is shown on the plat with a heavy dotted line. WITNESS MY HAND AND SEAL this 18th day of April, 1972.



Ronald L. Vogel
 RONALD L. VOGEL, NEBRASKA REGISTERED LAND SURVEYOR L. S. 266

DEDICATION

We, the undersigned, being the owners of that part of Tracts One and Seven, Union Livestock Addition to the City of Scottsbluff, Nebraska, as described in the foregoing "Surveyor's Certificate" and as shown on the accompanying plat, have caused such land to be surveyed and platted as HEILBRUN SUBDIVISION, Lot 'A', of part of Tracts One and Seven, Union Livestock Addition to the City of Scottsbluff, Nebraska. The foregoing subdivision is made with the free consent and in accordance with the desires of the undersigned owners. We hereby dedicate the Streets, Avenues, Easements and Building Setback Designation referred to in the plat to the use and benefit of the public.

Dated this 20th day of April, 1972.

Harold Heilbrun
HAROLD HEILBRUN

Betty Jane Heilbrun
BETTY JANE HEILBRUN

ACKNOWLEDGEMENT

STATE OF NEBRASKA)
SCOTTS BLUFF COUNTY) ss

Before me, a Notary Public, qualified and acting in such County, personally came Harold Heilbrun and Betty Jane Heilbrun, husband and wife, to me known to be the identical persons whose names are affixed to the foregoing "Dedication" and acknowledged the execution thereof to be their voluntary act and deed.

WITNESS MY HAND AND NOTARIAL SEAL this 20th day of April, 1972.



Kenneth G. Roberts
NOTARY PUBLIC

My commission expires: 27th February 1973

APPROVAL AND ACCEPTANCE

The accompanying plat of Heilbrun Subdivision, Lot A, approved and accepted by the Mayor and City Council of the City of Scottsbluff by resolution duly passed this 24th day of April, 1972.

G. A. Thomas
MAYOR

ATTEST: *L. L. Berguson*
CITY CLERK



STATE OF NEBRASKA SCOTTS BLUFF COUNTY	} ss.	NUMERICAL GENERAL TAX REG. PICTURED
Entered on Numerical Index and filed for record the <u>1</u> day of <u>May</u> 1972, at <u>2:33</u> o'clock <u>P.</u> M., and recorded in Book <u>137</u> of <u>Deeds</u>		
Records on Page <u>416</u>		
<i>Mary Jo Ellis</i> REGISTER OF DEEDS		