

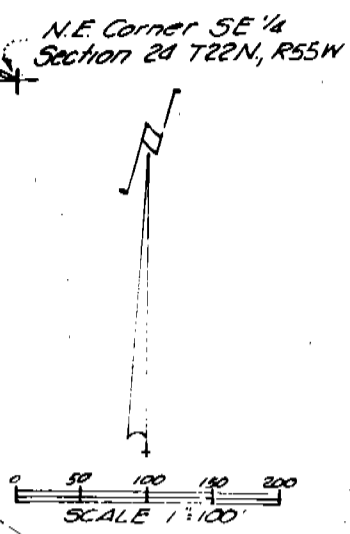
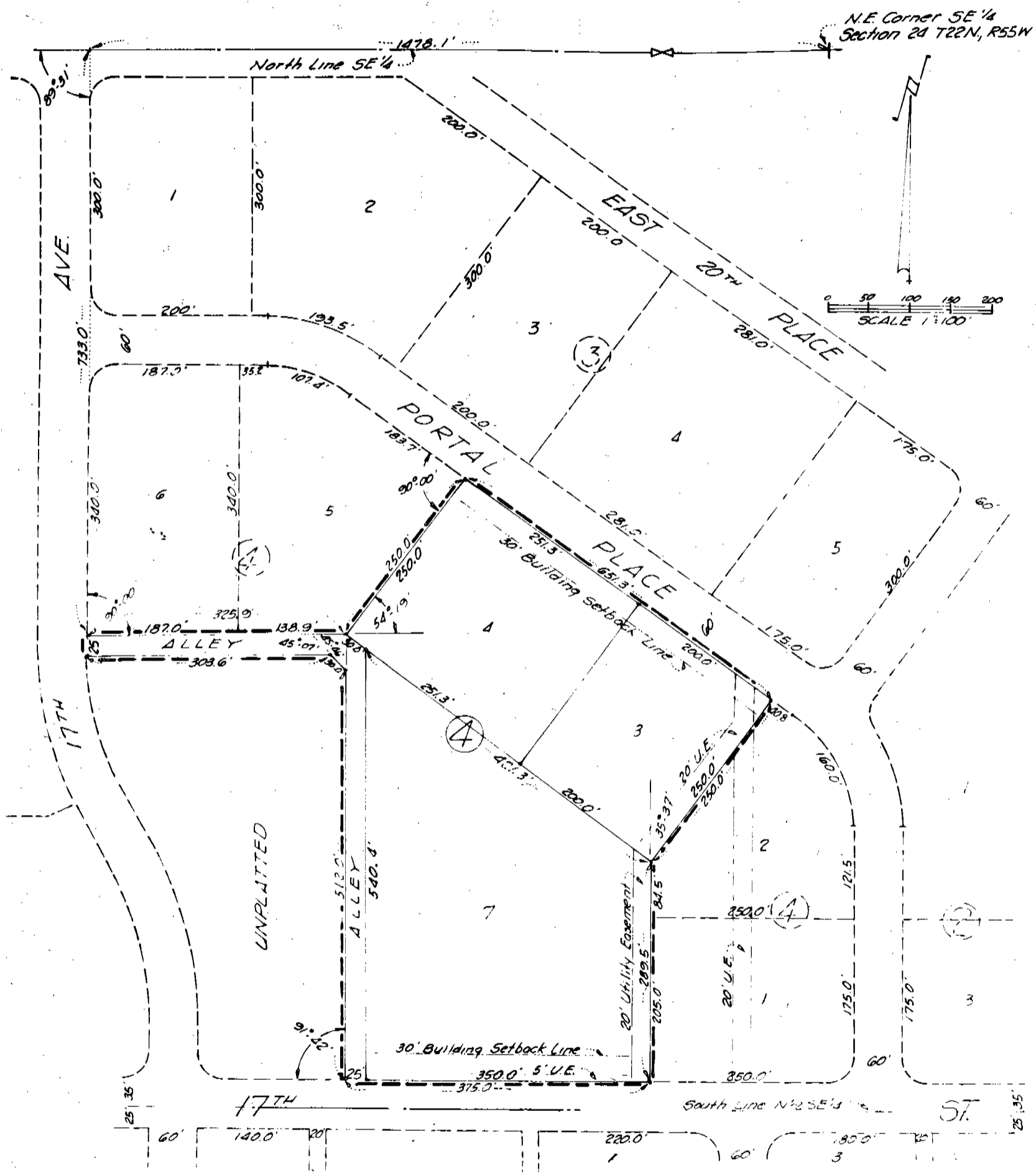
1449

# EAST PORTAL ADDITION

## LOTS 3, 4 & 7, BLOCK 4

### TO THE CITY OF SCOTTSBLUFF, NEBRASKA

SITUATED IN THE SE 1/4 OF SECTION 24, T22N, R55W OF THE 6TH P.M.  
SCOTTS BLUFF COUNTY, NEBRASKA



STATE OF NEBRASKA, Scotts Bluff Co. ss.  
 Entered on Numerical Index and filed for  
 record the 26 day of April, 1972  
 at 9:45 o'clock A.M. and recorded in  
 Book 137 of Deeds on Page  
390  
 By Mary Jo Ellis  
 REGISTER OF DEEDS  
 By Clayton J. Clark Deputy

SURVEYOR'S CERTIFICATE

I, Ronald L. Vogel, a competent surveyor of Scotts Bluff County, Nebraska, hereby certify that I have surveyed EAST PORTAL ADDITION, Lots Three (3), Four (4) and Seven (7), Block Four (4), to the City of Scotts Bluff, Nebraska, such subdivision being situated on part of the Southeast Quarter (SE $\frac{1}{4}$ ) of Section Twenty-four (24), Township Twenty-two (22) North, Range Fifty-five (55) West of the 6<sup>th</sup> P.M., Scotts Bluff County, Nebraska, the boundary of such subdivision being more particularly described as follows:

With reference to the Northeast corner of such SE $\frac{1}{4}$ ; then West on the North Line of such SE $\frac{1}{4}$  a distance of 1478.1 feet to intersect the East Line of 17<sup>th</sup> Avenue, extended North; then a deflection angle to the left of 89 degrees 31 minutes, on the East Line of 17<sup>th</sup> Avenue, a distance of 733.0 feet to the Southwest corner of Lot 6, Block 4, East Portal Addition, as platted, and the point of beginning; then a deflection angle to the left of 90 degrees 00 minutes, on the South Line of the aforesaid Lot 6 extended East, a distance of 325.9 feet to the Southeast corner of Lot 5, Block 4, East Portal Addition; then a deflection angle to the left of 54 degrees 19 minutes, on the Easterly Line of Lot 5, a distance of 250.0 feet to the South Line of Portal Place; then a deflection angle to the right of 90 degrees 00 minutes, on the South Line of Portal Place, a distance of 651.3 feet to the Northwest corner of Lot 2, Block 4, East Portal Addition; then a deflection angle to the right of 90 degrees 00 minutes, on the Northwesterly Line of such Lot 2, a distance of 250.0 feet; then a deflection angle left of 35 degrees 37 minutes, on the West Line of Lots 1 and 2, Block 4, East Portal Addition, a distance of 289.5 feet to the North Line of 17<sup>th</sup> Street; then West on the North Line of 17<sup>th</sup> Street a distance of 375.0 feet;

then a deflection angle to the right of 91 degrees 42 minutes a distance of 512.0 feet; then a deflection angle to the left of 45 degrees 46 minutes a distance of 30.0 feet; then a deflection angle to the left of 45 degrees 07 minutes a distance of 303.6 feet to the East Line of 17<sup>th</sup> Avenue; then North on the East Line of 17<sup>th</sup> Avenue a distance of 25.0 feet to the point of beginning, containing an area of 7.63 acres, more or less.

That the accompanying plat is a true delineation of such survey drawn to a scale of 100 feet to the inch. That all corners are marked with 5/8" x 18" iron rods and that all dimensions are in feet and decimals. That each Lot and Block bears its own number. That the boundary of the subdivision is shown on the plat with a heavy dotted line.

WITNESS MY HAND AND SEAL this 20<sup>th</sup> day of April, 1972.



*Ronald L. Vogel*  
RONALD L. VOGEL, NEBRASKA REGISTERED LAND  
SURVEYOR L. S. 266

DEDICATION AND ANNEXATION

We, the undersigned, being the owners of that part of the SE<sup>1</sup>/<sub>4</sub> of Section 24, Township 22 North, Range 55 West of the 6<sup>th</sup> P. M., Scotts Bluff County, Nebraska, as shown in the accompanying plat and described in the foregoing "Surveyor's Certificate" have caused such real estate to be surveyed and platted as EAST PORTAL ADDITION, Lots 3, 4 and 7, Block 4, an addition to the City of Scottsbluff, Nebraska.

The foregoing subdivision of East Portal Addition and the Street, Avenues, Alleys, Easements and Building Setback Designations shown on and referred to in the plat is made with the free consent and in accordance with the desires of the undersigned owners. We hereby dedicate the Streets, Avenues and Alleys designated upon and referred to in the plat to the use and benefit of the public and further annex and make such real estate a part of the City of Scottsbluff, Nebraska.

Dated this 21<sup>ST</sup> day of April, 1972.

C. D. Wildy  
C. D. Wildy

John M. Atkinson  
John M. Atkinson

Bobbie R. Atkinson  
Bobbie R. Atkinson

ACKNOWLEDGEMENT

STATE OF NEBRASKA )  
SCOTTS BLUFF COUNTY ) ss

Before me, a Notary Public, qualified in said County, personally came C. D. Wildy, a single person and John M. Atkinson and Bobbie R. Atkinson, husband and wife, to me known to be the identical persons whose names are affixed to the foregoing Dedication and Annexation and acknowledged the execution thereof to be their voluntary act and deed.

WITNESS MY HAND AND NOTARIAL SEAL this 21<sup>ST</sup> day of April, 1972.



J. T. Arnow  
Notary Public

My commission expires: August 4, 1975

APPROVAL AND ACCEPTANCE

The accompanying plat of East Portal Addition and the Dedication and Annexation approved by the Mayor and City Council of the City of Scottsbluff, Nebraska by resolution duly passed this 24<sup>th</sup> day of April, 1972.



G. G. Johnson  
Mayor

ATTEST: [Signature]  
City Clerk