

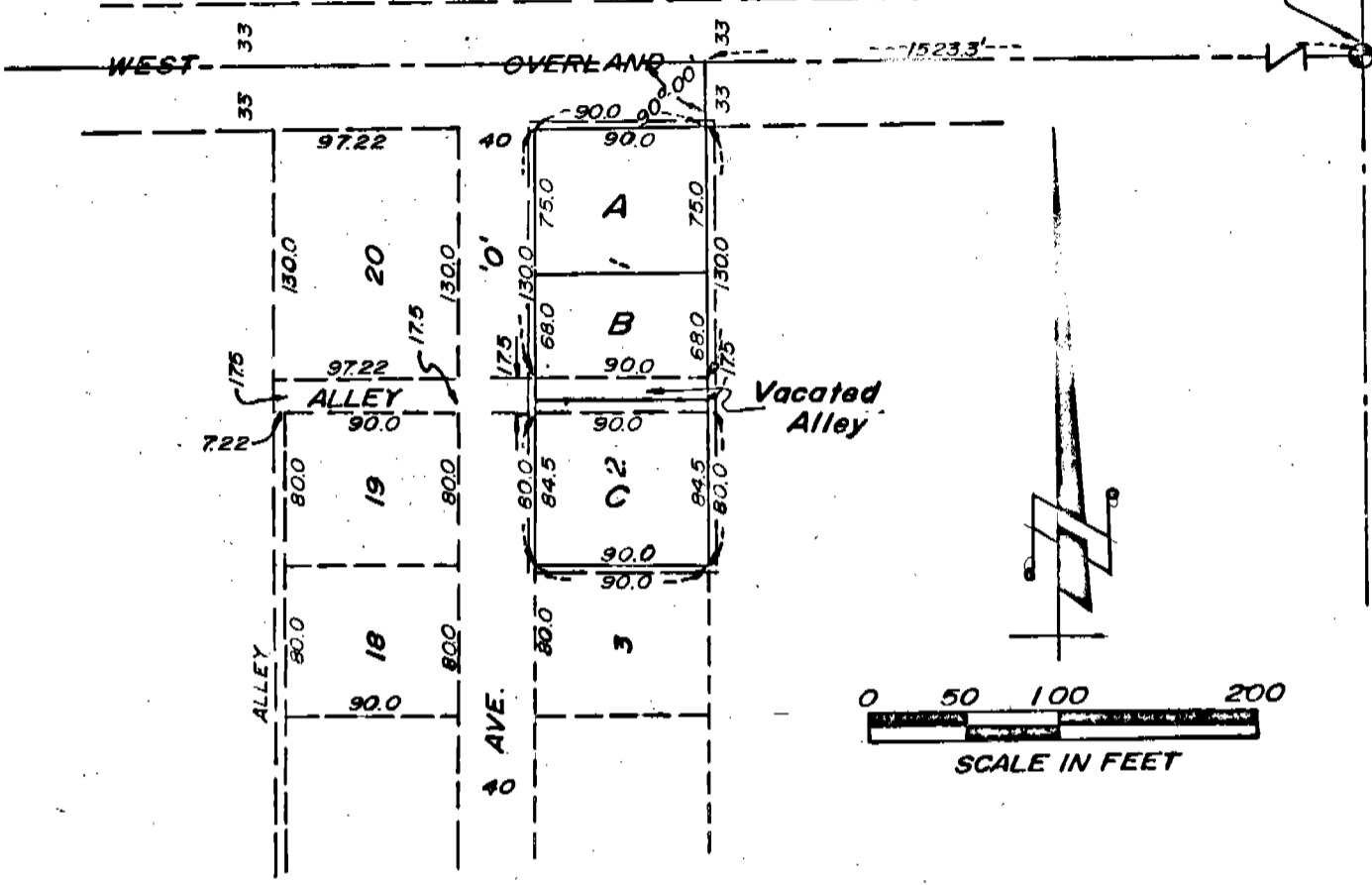
344

1573

REPLAT OF LOTS ONE AND TWO, PARK VIEW TRACTS, AND THE VACATED ALLEY BETWEEN LOTS ONE AND TWO, A SUBDIVISION WITHIN THE CITY OF SCOTTSBLUFF, NEBRASKA

STATE OF NEBRASKA, Scotts Bluff Co. ss.
Entered on Numerical Index and filed for record the 21 day of April 1971 at 12:41 o'clock P.M. and recorded in Book 137 of Deeds on Page 344
Mey J. Kallas
REGISTER OF DEEDS

N.E. Cor. Sec. 27
T22N, R55W



SURVEYOR'S CERTIFICATE

I, Ronald L. Vogel, a competent surveyor of Scotts Bluff County, Nebraska, hereby certify that I have surveyed Lots One and Two and the Alley platted between such Lots, Park View Tracts, a part of the City of Scottsbluff, Nebraska and have further surveyed, subdivided and replatted such Lots and the alley as described above and vacated by the City of Scottsbluff as Lots A, B and C, REPLAT OF LOTS ONE AND TWO, PARK VIEW TRACTS, AND THE VACATED ALLEY BETWEEN LOTS ONE AND TWO, A SUBDIVISION WITHIN THE CITY OF SCOTTSBLUFF, NEBRASKA

That the accompanying plat is a true delineation of such survey drawn to a scale of 100 feet to the inch. That each new lot bears its own letter. That all dimensions are in feet and decimals. That all corners are marked with iron rods.

That the boundary of the subdivision is shown on the plat with a heavy dotted line and that adjoining lands are shown in dotted line for orientation purposes.

WITNESS MY HAND AND SEAL this 13th day of October, 1971.



Ronald L. Vogel
RONALD L. VOGEL
NEBRASKA REGISTERED LAND SURVEYOR LS 266

OWNER'S STATEMENT

We, the undersigned, being the owners of Lots One and Two and the vacated alley lying between such Lots One and Two, Park View Tracts, a part of the City of Scottsbluff, Nebraska, have caused such real estate to be surveyed and platted as LOTS A, B AND C, REPLAT OF LOTS ONE AND TWO, PARK VIEW TRACTS, AND THE VACATED ALLEY BETWEEN LOTS ONE AND TWO, A SUBDIVISION WITHIN THE CITY OF SCOTTSBLUFF, NEBRASKA.

The foregoing subdivision and replat of Lots A, B and C, as shown on the plat is made with the free consent and in accordance with the desires of the undersigned owners.

Dated this 1st day of NOV, 1971.

Donald E. Grove (signature) Donald E. Grove

Lampert Lumber Company a Minnesota Corporation

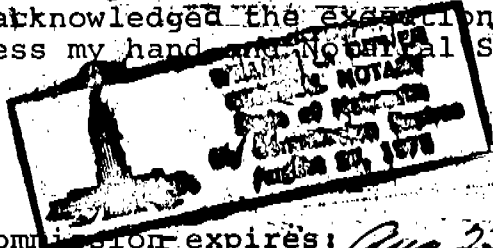
Gertrude Jean Grove (signature) Gertrude Jean Grove

by: John R. Lampert (signature) President

ACKNOWLEDGEMENT

STATE OF NEBRASKA) ss SCOTTS BLUFF COUNTY)

Before me, a Notary Public, qualified in said County, personally came Donald E. Grove and Gertrude Jean Grove, husband and wife, to me known to be the identical persons whose names are affixed to the foregoing "Owners Statement and acknowledged the execution thereof to be their voluntary act and deed. Witness my hand and Notarial Seal this 1 day of November, 1971



W. B. Bitten (signature) Notary Public

My commission expires: Aug 27, 1975

ACKNOWLEDGEMENT

STATE OF MINNESOTA) ss RAMSEY COUNTY)

Before me, a Notary Public, qualified in said County, personally came John R. Lampert, President of Lampert Lumber Company, a Minnesota Corporation, to me known to be the identical person and president of such corporation, whose name is affixed to the foregoing "Owners Statement" and acknowledged the execution thereof to be his voluntary act and deed and the voluntary act and deed of such corporation.

Witness my hand and Notarial Seal this 19th day of October, 1971

R. J. Schoedel (signature) Notary Public

My commission expires: 4-2-72

R. J. SCHOEDEL Notary Public, Ramsey County, Minn. My Commission Expires April 2, 1972

APPROVAL AND ACCEPTANCE

The accompanying plat of Lots A, B and C, subdivision and replat of Lots One and Two, Park View Tracts and the vacated alley between such Lots One and Two approved and accepted by the Mayor and City Council of the City of Scottsbluff, by resolution duly passed this 13th day of December, 1971.

ATTEST: L. S. Ferguson (signature)

Mayor: E. G. Thomas (signature)

