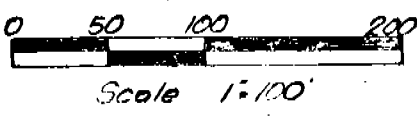
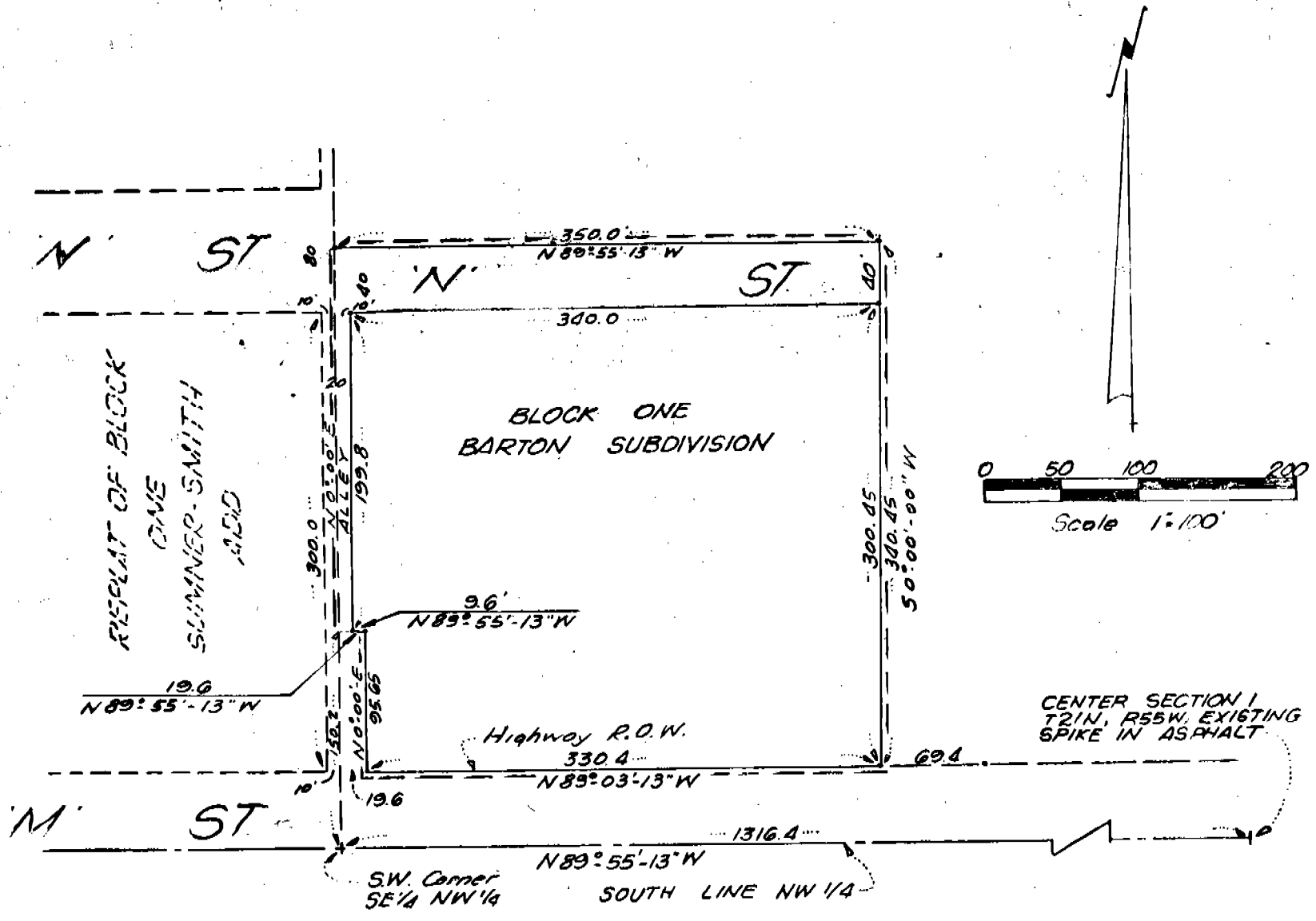


BLOCK ONE BARTON SUBDIVISION

PART OF THE NW 1/4 OF SECTION ONE, TOWNSHIP 21 NORTH,
RANGE 55 WEST, OF THE 6th PM., SCOTTS BLUFF COUNTY,
NEBRASKA



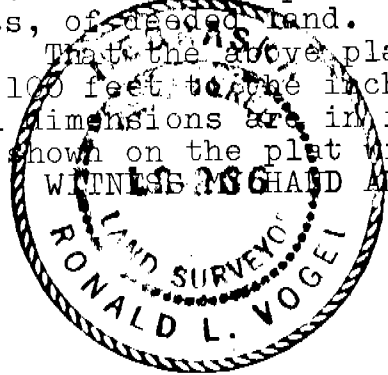
SURVEYOR'S CERTIFICATE

I, Ronald L. Vogel, a competent surveyor of Scotts Bluff County, Nebraska, hereby certify that I have surveyed and platted "BARTON SUBDIVISION" Block One (1), a part of the Northwest Quarter (NW¹/₄) of Section One (1), Township Twenty-one (21) North, Range Fifty-five (55) West of the 6th P.M., Scotts Bluff County, Nebraska the boundary of such subdivision being more particularly described as follows:

With reference to the Southeast corner of such Northwest Quarter (NW¹/₄); then North 89 degrees 55 minutes 13"seconds West on the South Line of such NW¹/₄ a distance of 1316.40 feet to the Southwest corner of the Southeast Quarter of the Northwest Quarter (SE¹/₄NW¹/₄); then North 00 degrees 00 minutes 00 seconds East, on the West Line of such SE¹/₄NW¹/₄, a distance of 150.20 feet to the point of beginning, such point also being on the East Line of an alley as platted with Sumner-Smith Addition; then continuing North 00 degrees 00 minutes 00 seconds East a distance of 239.80 feet; then South 89 degrees 55 minutes 13 seconds East a distance of 350.00 feet; then South 00 degrees 00 minutes 00 seconds West a distance of 340.45 feet to the North Right of Way Line of Nebraska Highway No. 92; then North 89 degrees 03 minutes 13 seconds West, on such Right of Way Line, a distance of 330.40 feet; then North 00 degrees 00 minutes 00 seconds a distance of 95.65 feet; then North 89 degrees 55 minutes 13 seconds West a distance of 9.60 feet to the point of beginning, containing an area of 2.79 acres, more or less, of deeded land.

That the above plat is a true delineation of such survey drawn to a scale of 100 feet to the inch. That all corners are marked with iron rods and that all dimensions are in feet and decimals. That the boundary of the subdivision is shown on the plat with a heavy dotted line.

WITNESSED AND SEAL this 21st day of January, 1972.



Ronald L. Vogel
 RONALD L. VOGEL, NEBRASKA REGISTERED LAND SURVEYOR IS
 266

1277
DEDICATION

We, the undersigned, being the owners of that part of the Northwest Quarter (NW¹/₄) of Section One (1), Township 21 North, Range 55 West of the 6th P.M., Scotts Bluff County, Nebraska as described in the foregoing "Surveyor's Certificate" and shown on the accompanying plat have caused such land to be surveyed and platted as BARTON SUBDIVISION, BLOCK ONE.

The above described and foregoing subdivision of BARTON SUBDIVISION, BLOCK ONE and the Streets and Alleys as appear on the plat is made with the free consent and in accordance with the desires of the undersigned owners.

We hereby dedicate the Streets and Alleys designated upon and referred to in the plat to the use and benefit of the public.

Dated this 18 day of March, 1972.

X Harry C. Barton
HARRY C. BARTON

X Carmie L. Barton
CARMIE L. BARTON

ACKNOWLEDGEMENT

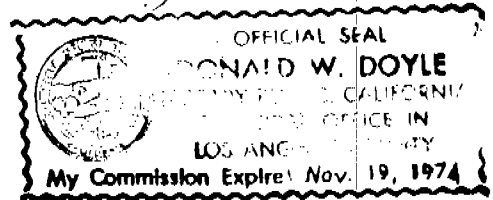
California
STATE OF ~~NEBRASKA~~
~~SCOTTS BLUFF COUNTY~~) ss
Los Angeles

Before me, a Notary Public, qualified in said County, personally came Harry C. Barton and Carmie L. Barton, husband and wife, to me known to be the identical persons whose names are affixed to the foregoing "Dedication" and acknowledged the execution thereof to be their voluntary act and deed.

Dated this 18th day of March, 1972.

Donald W. Doyle
Notary Public

My commission expires: Nov. 19, 1974



APPROVAL AND ACCEPTANCE

The accompanying plat and "Dedication" of Barton Subdivision approved by the Mayor and City Council of the City of Gering, Nebraska by Ordinance No. 744 duly passed this 10th day of April, 1972.

Richard Probst
MAYOR

ATTEST: Richard M. Brown
CITY CLERK

STATE OF NEBRASKA, Scotts Bluff Co. ss,
Entered on Numerical Index and filed for
record the 13 day of April, 1972,
at 2:55 o'clock P.M., and recorded in
Book 137 of Deed on Page
286
Mary J. Ellis
REGISTER OF DEEDS
By _____ Deputy