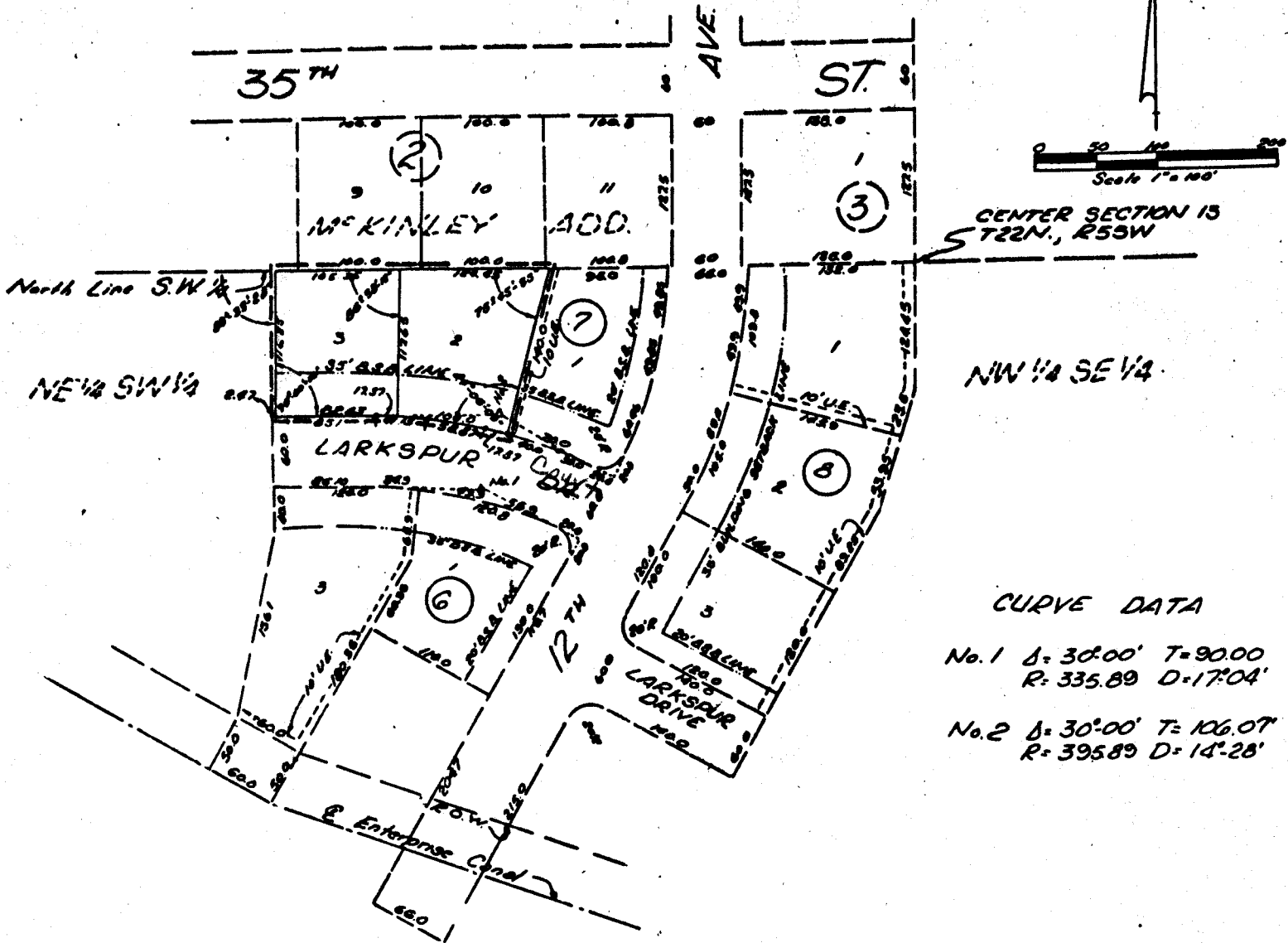


IDLEWYLDE ADDITION LOT 2 & 3 BLK. 7; AN ADDITION TO THE CITY OF SCOTTSBLUFF, NEBRASKA

* Street name changed Ord 1998
M.S.C. 86-57



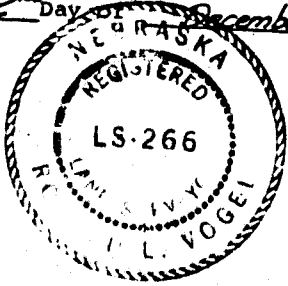
SURVEYOR'S CERTIFICATE

I, Donald L. Vogel, a competent surveyor of Scotts Bluff County, Nebraska, hereby certify that I have surveyed a part of the Southwest Quarter of Section Thirteen (13), Township Twenty-Two (22) North, Range Fifty-Five (55) West of the 6th P. M., Scotts Bluff County, Nebraska and have further subdivided and platted such tract of land into lots Two (2) and Three (3), Block Seven (7), IDLEWYLDE ADDITION to the City of Scottsbluff, Nebraska. The boundary of such subdivision is described as follows:

Beginning at a point on the North Line of such SW 1/4, such point being 293.0 feet West of the Northeast corner of such SW 1/4. Such point also being the Northwest corner of Lot One (1), Block Seven (7), IDLEWYLDE ADDITION to the City of Scottsbluff, Nebraska according to the recorded Plat thereof, then West, on the North Line of such SW 1/4, a distance of 229.80 feet; then a deflection angle to the left of 89 degrees 33 minutes, 28 seconds a distance of 116.25 feet to the North Line of Larkspur Drive, as previously platted and dedicated; then a deflection angle to the left of 90 degrees, 00 minutes, 00 seconds a distance of 82.63 feet to the P.C. of a 14 degree 28 minute curve to the right, such curve having a central angle of 30 degrees, 00 minutes; then in a Southeasterly direction, along such curve a distance of 117.37 feet to the Southwest corner of Lot One (1), Block Seven (7), IDLEWYLDE ADDITION to the City of Scottsbluff, Nebraska, then Northeasterly, on the West Line of such Lot One (1) a distance of 140.00 feet to the point of beginning, containing an area of 0.63 acres more or less of deeded land.

That the accompanying plat is a true delineation of such survey drawn to a scale of 100 feet to the inch. That all dimensions are in feet and decimals and that all corners are marked with 5/8" diameter 36" reinforcing rods. That each Lot and Block bears its own number. That the boundary of the subdivision is shown on the plat with a heavy dotted line and adjoining platted lands are shown with dotted lines for orientation purposes.

WITNESS MY HAND AND SEAL THIS 22 Day of December, 1971.



Donald L. Vogel
 Donald L. Vogel, NEBRASKA REGISTERED LAND
 SURVEYOR, L.S. 266

LOTS TWO AND THREE, BLOCK SEVEN

4

STATEMENT OF OWNERSHIP AND ANNEXATION

The undersigned, being the owners of that part of the Southwest Quarter (SW¹/₄) of Section Thirteen (13), Township Twenty-Two (22) North, Range Fifty Five (55) West of the 6th P.M., Scotts Bluff County, Nebraska, as shown and described in the foregoing Plat and "Surveyor's Certificate" have caused such real estate to be surveyed and platted as IDLEWYLDE ADDITION, Lots Two (2) and Three (3), Block Seven (7) to the City of Scottsbluff, Scotts Bluff County, Nebraska.

The foregoing subdivision of IDLEWYLDE ADDITION with the Building Setback Designations shown on the Plat is made with the free consent and in accordance with the desires of the undersigned owners.

We hereby annex and make such real estate a part of the City of Scottsbluff, Scotts Bluff County, Nebraska.

Dated this 27th day of December 1971.

(SEAL)

MAXWELL, INC., A CORPORATION

By: Melvin Maxwell
MELVIN L. MAXWELL, PRESIDENT

ACKNOWLEDGEMENT

STATE OF NEBRASKA)
SCOTTS BLUFF COUNTY) ss.

Before me, a Notary Public, qualified in said County, personally came Melvin L. Maxwell, President of Maxwell, Inc., a corporation, known to be the identical person and president of such corporation who signed the foregoing "STATEMENT OF OWNERSHIP AND ANNEXATION" and acknowledged the execution thereof to be his voluntary act and deed and the voluntary act and deed of such corporation and that its corporate seal was thereto affixed by its authority.

WITNESS MY HAND AND NOTARIAL SEAL THIS 27th day of December, 1971.

My Commission Expires: Feb. 1974

Edward Fischer
NOTARY PUBLIC

APPROVAL AND ACCEPTANCE

The accompanying Plat of IDLEWYLDE ADDITION and the "STATEMENT OF OWNERSHIP AND ANNEXATION" approved and accepted by the Mayor and City Council of the City of Scottsbluff, Scotts Bluff County, Nebraska by resolution duly passed this 27th day of December 1971.

ATTEST A. Ferguson
CITY CLERK

E. A. Thomas
MAYOR



4

NUMERICAL
GENERAL
TAX REG.
PICTURED

STATE OF NEBRASKA } ss.
SCOTTS BLUFF COUNTY }

Entered on Numerical Index and filed for record the 3 day of January 1972, at 11:30 o'clock A. M., and recorded in Book 136 of Deed

Records on Page 480

By Mary Jo Ellis Deputy
REGISTER OF DEEDS