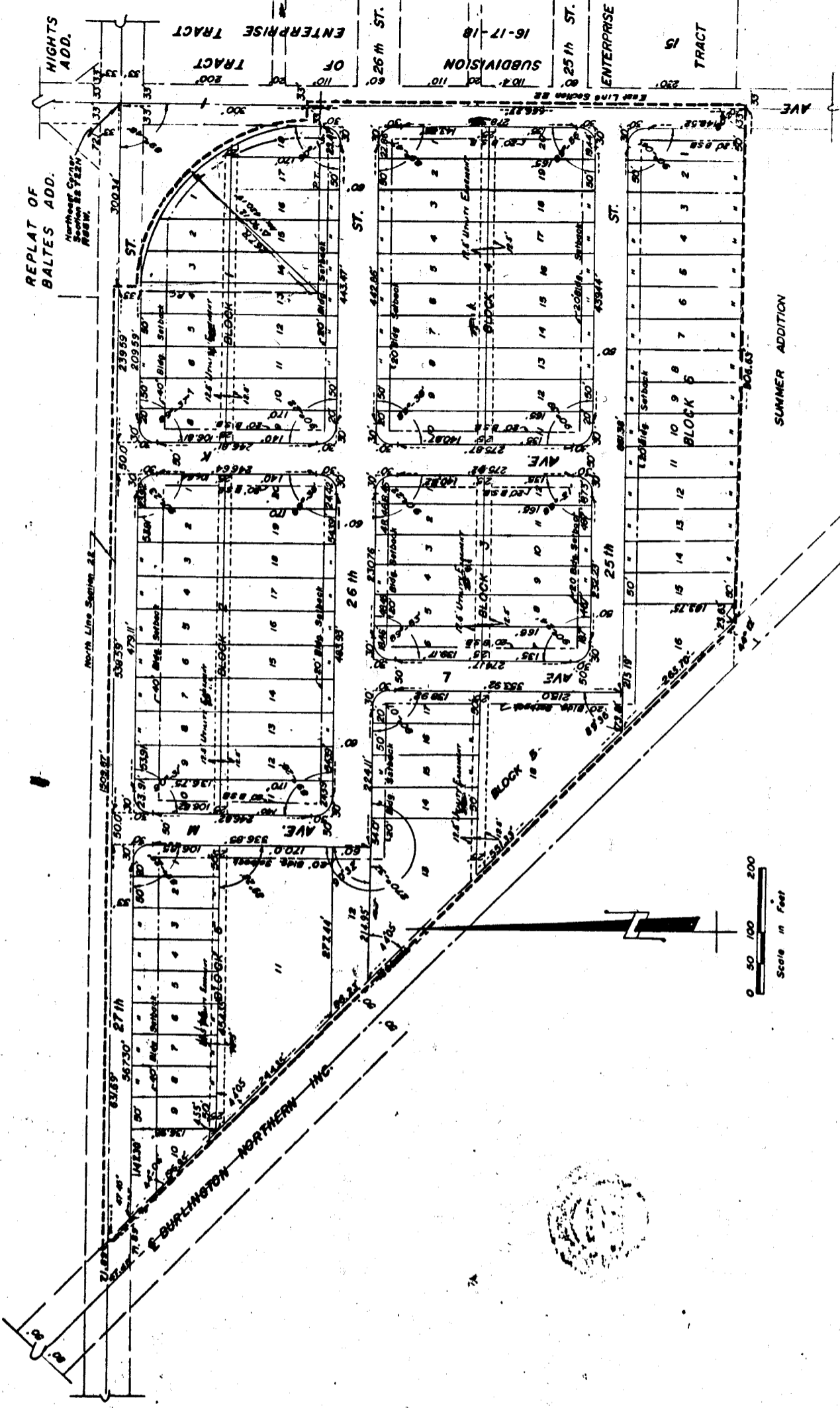


PLAT OF BURLINGTON NORTHERN SUBDIVISION  
 BLOCKS ONE, TWO, THREE, FOUR, FIVE, & SIX

2

A SUBDIVISION OF THE CITY OF SCOTTSBLUFF, NEBRASKA SITUATED IN PART OF THE  
 NE 1/4 SECTION 22 T22N, R55W WEST OF 6th P.M. SCOTTS BLUFF CO., NEBRASKA



*See Amended Plat of Block 2 - 192-186*

- NOTE: See Replat of Lots 1 through 6, Block 4, Burlington Northern Subd., Deed 206-134
- NOTE: See Replat of Lots 16 through 18, Block 1, Burlington Northern Subdivision, Deed 207-11

Approved by the  
 Board of Commissioners  
 of Scotts Bluff Co., Neb.

SURVEYOR'S CERTIFICATE

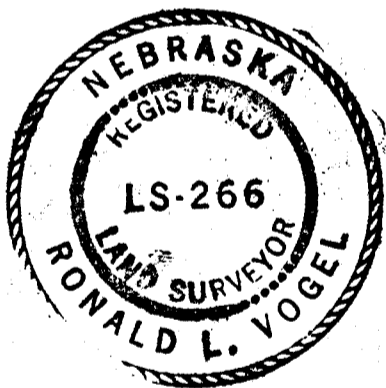
I, Ronald L. Vogel, a competent surveyor of Scotts Bluff County, Nebraska, hereby certify that I have surveyed Burlington Northern Subdivision, Lots 1 through 18, Block One, Lots 1 through 20, Block Two, Lots 1 through 12, Block Three, Lots 1 through 20, Block Four, Lots 1 through 18, Block Five, Lots 1 through 16, Block Six, a subdivision of the City of Scottsbluff, Nebraska, situated on a part of the Northeast Quarter (NE $\frac{1}{4}$ ) of Section Twenty-Two (22), Township Twenty-Two (22) North, Range Fifty-Five (55) West of the 6th P.M., Scotts Bluff County, Nebraska, the boundary of such subdivision being more particularly described as follows:

Beginning at a point on the East line of such Northeast Quarter (NE $\frac{1}{4}$ ), such point being 300.0 feet South of the Northeast corner of such NE $\frac{1}{4}$ ; then South on the East line of such NE $\frac{1}{4}$  a distance of 666.27 feet; then a deflection angle right of 89 degrees 40 minutes a distance of 806.63 feet to the Easterly right-of-way line of Burlington Northern, Inc.; then a deflection angle right of 44 degrees 12 minutes, along such right-of-way line, a distance of 1,392.01 feet to the North line of such NE $\frac{1}{4}$ ; then a deflection angle right of 135 degrees 56 minutes, along the North line of such NE $\frac{1}{4}$ , a distance of 1,509.87 feet; then a deflection angle right of 90 degrees 00 minutes a distance of 33.0 feet to the P.C. of a curve, initial tangent of which is a deflection angle left of 89 degrees 37 minutes from the last described line, such curve having a radius of 267.0 feet, central angle of 90 degrees 12 minutes right and a length of 420.19 feet; then along such curve a distance of 420.19 feet to the P.T. of such curve; then a deflection angle left of 90 degrees 00 minutes tangent to such curve, a distance of 33.0 feet to the point of beginning, containing an area of 28.2 acres, more or less.

That I have surveyed and platted the above described area as Burlington Northern Subdivision, Block One, Two, Three, Four, Five and Six, a subdivision of the City of Scottsbluff, Nebraska and consisting thereof, of parts of public streets and avenues therein.

That the accompanying plat is a true delineation of such survey drawn to a scale of 100 feet to the inch. That all dimensions are in feet and decimals and that all corners are marked with iron rods driven well into the ground. That each Lot, Block, Street or Avenue bears its own name or number. That the boundary of the subdivision is shown on the plat with a heavy dotted line.

Witness my hand and seal this 26th day of October, 1971.



*Ronald L. Vogel*  
 RONALD L. VOGEL, NEBRASKA REGISTERED  
 LAND SURVEYOR, L.S. 266

Approved as to form  
 RLB  
 Asst. Gen. Solicitor  
 Law Dept. B.N.I.



OWNER'S STATEMENT & DEDICATION

The undersigned, Burlington Northern Inc., being the owner of that part of the NE $\frac{1}{4}$  of Section 22, Township 22 North, Range 55 West of the 6th P.M., Scotts Bluff County, Nebraska, as described in the foregoing "Surveyor's Certificate", has caused such real estate to be surveyed and platted as Burlington Northern Subdivision, Blocks One, Two, Three, Four, Five and Six.

The above described and foregoing subdivision of Burlington Northern Subdivision and the Streets, Avenues, Easements and Building Setback designations shown on and referred to in the plat is made with the free consent and in accordance with the desires of the undersigned owner.

Burlington Northern Inc. hereby dedicates the Streets and Avenues designated upon and referred to in such plat to the use and benefit of the public.

Reserving, however, unto Burlington Northern Inc., its successors and assigns, the perpetual right to construct, maintain, operate, relocate and remove railway tracks over and across said streets, avenues and utility easements.

Dated this 14th day of December, 1971.

ATTEST:  
BY [Signature]  
R.M. O'Kelly - Secretary

BURLINGTON NORTHERN INC.  
BY [Signature]  
G.F. Defiel - Vice President

ACKNOWLEDGEMENT

STATE OF MINNESOTA )  
COUNTY OF RAMSEY ) SS

Before me, a Notary Public, qualified and acting in such County, personally came G. F. Defiel, Vice President of Burlington Northern Inc., to me known to be the identical person and Vice President whose name is affixed to the foregoing "Owner's Statement and Dedication", and acknowledged the same to be his voluntary act and deed and the voluntary act and deed of such corporation.

Witness my hand and Notarial Seal this 14th day of December, 1971.

[Signature]  
R. H. Brokopp - Notary Public.  
R. H. BROKOPP, Notary Public, Ramsey County, Minn.  
My Commission Expires April 22, 1976

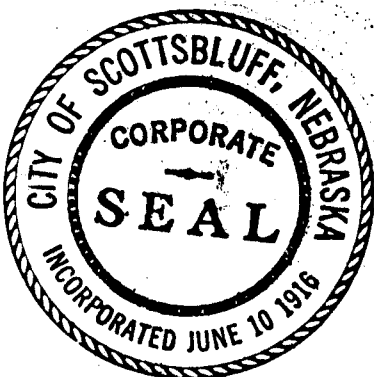
My commission expires: April 22, 1976

APPROVAL AND ACCEPTANCE

The accompanying plat of Burlington Northern Subdivision and the "Owner's Statement and Dedication" approved by the Mayor and City Council of the City of Scottsbluff, Nebraska by resolution duly passed this 13<sup>th</sup> day of December, 1971.

ATTEST:  
[Signature]  
City Clerk

[Signature]  
Mayor



STATE OF NEBRASKA } SS.  
SCOTTS BLUFF COUNTY }  
Entered on Numerical Index and filed for record the 3 day of January 1972, at 11:25 o'clock A. M., and recorded in Book 136 of Seed  
Records on Page 477  
[Signature]  
REGISTER OF DEEDS