

2937

pd 9.50  
City of Scottsbluff

✓ NUMERICAL  
GENERAL  
TAX REG.  
PICTURED

STATE OF NEBRASKA }  
SCOTTS BLUFF COUNTY } ss.

Entered on Numerical Index and filed for  
record the 29 day of September  
19 71, at 3:40 o'clock P. M., and  
recorded in Book 136 of  
Deeds

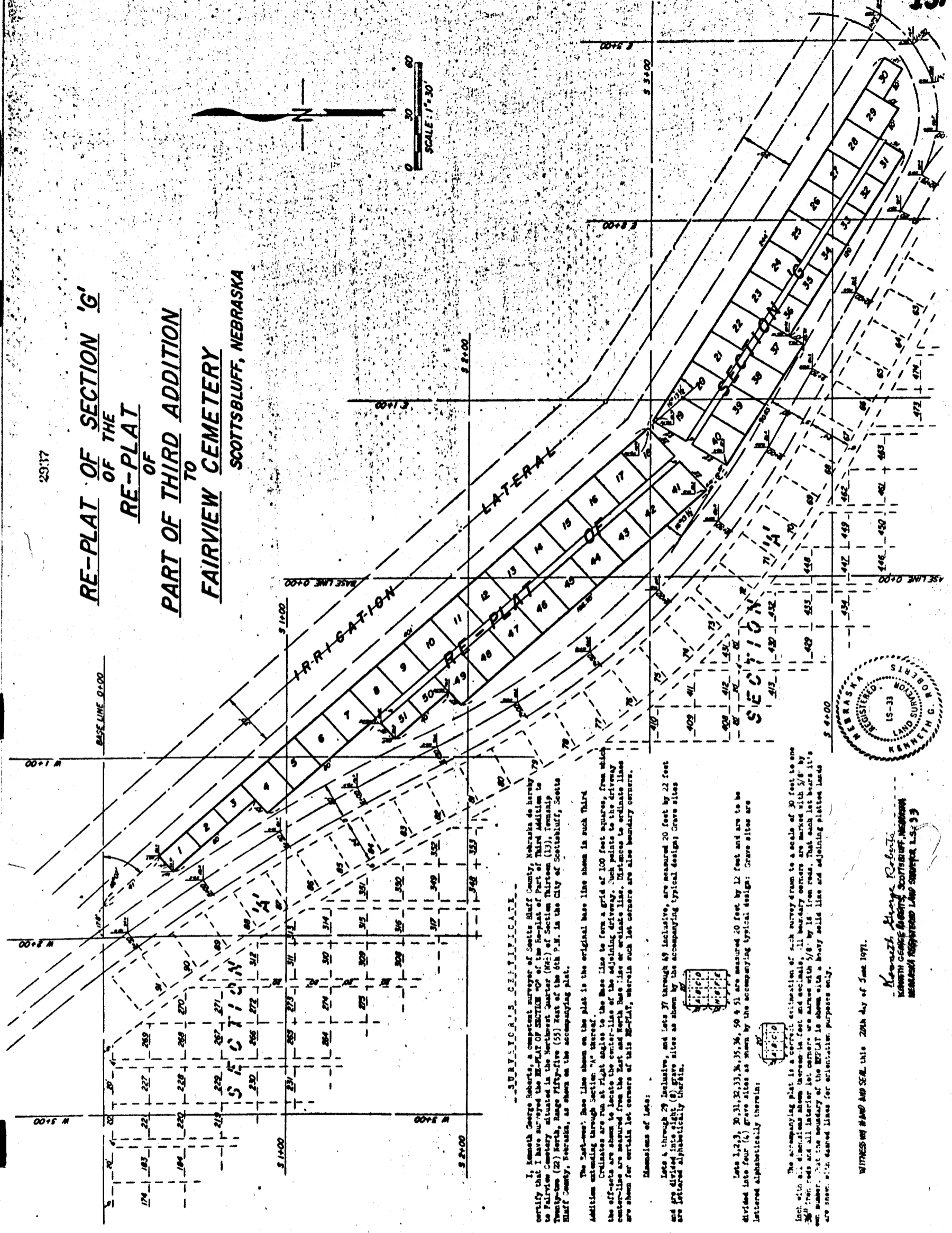
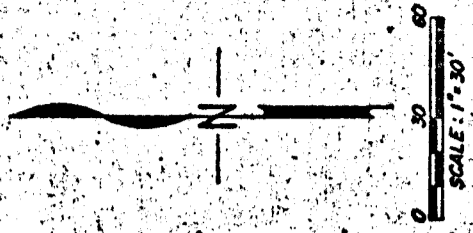
Records on Page 136

Mary Jo Elli  
REGISTER OF DEEDS

By ..... Deputy

29337

# RE-PLAT OF SECTION 'G' OF THE RE-PLAT OF PART OF THIRD ADDITION TO FAIRVIEW CEMETERY SCOTTSBLUFF, NEBRASKA



### SURVEYOR'S CERTIFICATE

I, Kenneth George Roberts, a competent surveyor of Scotts Bluff County, Nebraska do hereby certify that I have surveyed the RE-PLAT OF SECTION 'G' OF THE RE-PLAT OF PART OF THIRD ADDITION TO FAIRVIEW CEMETERY, situated in the Northwest Quarter (NW-1/4) of Section Thirtysix (36), Township Twenty-two (22) North, Range Fifty-five (55) West of the 6th P.M. in the City of Scottsbluff, Scotts Bluff County, Nebraska, as shown on the accompanying plat.

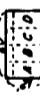
The lot-lines shown on the plat is the original base line shown in such third addition extending through Section 'A' thereof. Ordinates are run at right angles to the Base Line to form a grid of 100 foot squares, from which the off-sets are shown to locate the center-line of the adjoining driveway. Such points to the driveway center-line are measured from the East and North Base Line or ordinate line. Distances to ordinate lines are shown for certain lot corners of this RE-PLAT, wherein such lot corners are also boundary corners.

### Dimensions of Lots:

Lots 4 through 29 inclusive, and Lots 37 through 49 inclusive, are measured 20 feet by 22 feet and are divided into eight (8) grave sites as shown by the accompanying typical design; Grave sites are lettered alphabetically therein.



Lots 1, 2, 3, 30, 31, 32, 33, 34, 35, 36, 50 & 51 are measured 20 feet by 12 feet and are to be divided into four (4) grave sites as shown by the accompanying typical design; Grave sites are lettered alphabetically therein.



The accompanying plat is a correct estimation of such survey drawn to a scale of 30 feet to one inch with all dimensions shown thereon in feet and decimals, all boundary corners are marked with 5/8" by 3/8" iron rods and all interior lot corners are marked with 5/8" by 1/8" iron rods. That each lot bears its own number, that the boundary of the RE-PLAT is shown with a heavy solid line and adjoining platted lands are shown with dashed lines for identification, purpose only.

WITNESS MY HAND AND SEAL this 20th day of June 1971.



*Kenneth George Roberts*  
KENNETH GEORGE ROBERTS  
REGISTERED LAND SURVEYOR  
NEBRASKA REGISTERED LAND SURVEYOR L.S. 33