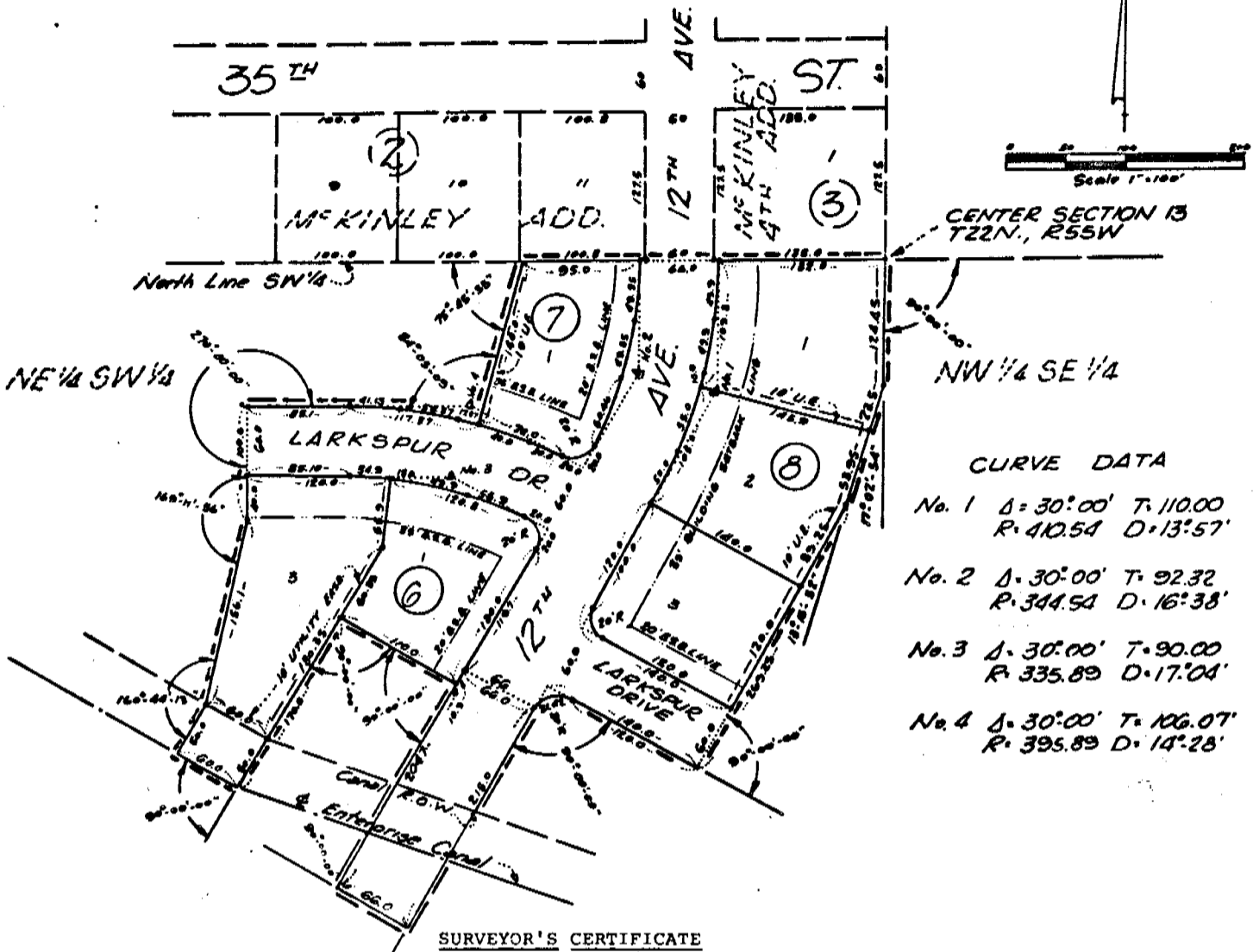


IDLEWYLDE ADDITION

2333

LOTS 183 BLOCK 6; LOT 1, BLOCK 7; LOTS 1, 2 & 3, BLOCK 8;
AN ADDITION TO THE CITY OF SCOTTSBLUFF, NEBR.



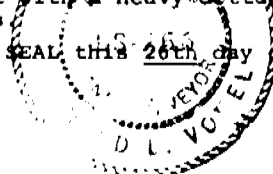
SURVEYOR'S CERTIFICATE

I, Ronald L. Vogel, a competent surveyor of Scotts Bluff County, Nebraska, hereby certify that I have surveyed a part of the Northeast Quarter of the Southwest Quarter (NE 1/4 SW 1/4) of Section Thirteen (13), Township Twenty-Two (22) North, Range Fifty-Five (55) West of the 6th P.M., Scotts Bluff County, Nebraska and have further subdivided and platted such tract of land into Lots One and Three, Block Six; Lot One, Block Seven and Lots One, Two and Three, Block Eight, IDLEWYLDE ADDITION to the City of Scottsbluff, Nebraska. The boundary of such subdivision is described as follows:

Beginning at the center of such Section 13, such point of beginning also being the Northeast corner of the NE 1/4 SW 1/4 and the Southeast corner of Lot One, Block Three, McKinley Fourth Addition to the City of Scottsbluff, Nebraska; thence South at right angles to the North line of such NE 1/4 SW 1/4 a distance of 124.45 feet; thence a deflection angle to the right of 17 degrees 02 minutes 54 seconds a distance of 77.45 feet; thence a deflection angle to the right of 13 degrees 15 minutes 52 seconds a distance of 269.25 feet; thence a deflection angle to the right of 90 degrees 00 minutes 00 seconds a distance of 120.00 feet to the beginning of a 20.00 foot radius curve to the left whose central angle is 90 degrees 00 minutes 00 seconds; thence along such curve to the left a distance of 31.42 feet to the termination of such curve; thence southerly, tangent to such curve, a distance of 215.0 feet; thence a deflection to the right of 90 degrees 00 minutes 00 seconds a distance of 66.0 feet; thence a deflection angle to the right of 90 degrees 00 minutes 00 seconds a distance of 204.70 feet; thence a deflection angle to the left of 90 degrees 00 minutes 00 seconds a distance of 110.00 feet; thence a deflection angle to the left of 90 degrees 00 minutes 00 seconds a distance of 170.00 feet to the centerline of the Enterprise Canal; thence a deflection angle to the right of 90 degrees 00 minutes 00 seconds along the centerline of such canal, a distance of 60.00 feet; thence a deflection angle right of 90 degrees 00 minutes 00 seconds a distance of 50.00 feet; thence a deflection angle to the left of 19 degrees 15 minutes 47 seconds a distance of 156.10 feet; thence a deflection angle left of 10 degrees 48 minutes 04 seconds a distance of 100.00 feet; thence a deflection angle right of 90 degrees 00 minutes 00 seconds a distance of 85.10 feet to the beginning of a 14 degree 28 minute curve to the right whose central is 30 degrees 00 minutes; thence along such curve to the right a distance of 117.37 feet; thence a deflection angle to the left of 95 degrees 54 minutes 51 seconds a distance of 140.00 feet to a point on the North line of such NE 1/4 SW 1/4 of such Section 13; thence a deflection angle to the right of 75 degrees 45 minutes 55 seconds a distance of 293.00 feet to the point of beginning, containing an area of 4.057 acres, more or less, of deeded land.

That the accompanying plat is a true delineation of such survey drawn to a scale of 100 feet to the inch. That all dimensions are in feet and decimals and that all corners are marked with 5/8" diameter reinforcing rods a minimum of 18" length with the exception that block corners are marked with 5/8" x 36" reinforcing rods. That each lot and block bears its own number. That the boundary of the subdivision is shown on the plat with a heavy dotted line and adjoining platted lands are shown with dotted lines for orientation purposes.

WITNESS MY HAND AND SEAL this 26th day of May, 1971.



Ronald L. Vogel
RONALD L. VOGEL, NEBRASKA REGISTERED LAND SURVEYOR, L.S. 266

DEDICATION AND ANNEXATION

The undersigned, being the owners of that part of the Northeast Quarter of the Southwest Quarter (NE $\frac{1}{4}$ SW $\frac{1}{4}$) of Section Thirteen (13), Township Twenty-Two (22) North, Range Fifty-Five (55) West of the 6th P.M., Scotts Bluff County, Nebraska, as shown and described in the foregoing Plat and "Surveyor's Certificate" have caused such real estate to be surveyed and platted as IDLEWYLDE ADDITION, Lots One and Three Block Six; Lot One, Block Seven and Lots One, Two and Three, Block Eight, to the City of Scottsbluff, Scotts Bluff County, Nebraska.

The foregoing subdivision of IDLEWYLDE ADDITION and the Streets, Avenues, Drives, Easements and Building Setback Designations shown on the plat is made with the free consent and in accordance with the desires of the undersigned owners.

We hereby dedicate the Streets, Avenues and Drives designated upon and referred to in the accompanying plat to the use and benefit of the public and further annex and make such real estate a part of the City of Scottsbluff, Scotts Bluff County, Nebraska.

Dated this 3rd day of June, 1971.

(SEAL)

MAXWELL, INC., A CORPORATION

By Melvin Maxwell
MELVIN L. MAXWELL, PRESIDENT

ACKNOWLEDGEMENT

STATE OF NEBRASKA)
SCOTTS BLUFF COUNTY) ss.

Before me, a Notary Public, qualified in said County, personally came Melvin L. Maxwell, President of Maxwell, Inc., a corporation, known to be the identical person and president of such corporation who signed the foregoing "DEDICATION AND ANNEXATION" and acknowledged the execution thereof to be his voluntary act and deed and the voluntary act and deed of such corporation and that its corporate seal was thereto affixed by its authority.

WITNESS MY HAND AND NOTARIAL SEAL this 3rd day of June, 1971.

My Commission Expires: March 18, 1975



Beverly A. Martin
NOTARY PUBLIC

APPROVAL AND ACCEPTANCE

The accompanying Plat of IDLEWYLDE ADDITION and the "DEDICATION AND ANNEXATION" approved and accepted by the Mayor and City Council of the City of Scottsbluff, Scotts Bluff County, Nebraska by resolution duly passed this 21st day of JUNE, 1971.

ATTEST: J. D. Ferguson
CITY CLERK

R. A. Thomas
MAYOR



STATE OF NEBRASKA, Scotts Bluff Co. ss.
Entered on Numerical Index and filed for
record the 12 day of August, 1971
at 2:00 o'clock P.M., and recorded in
Book 135 of Deeds on Page
574
Mary Jo Ellis
REGISTER OF DEEDS

By Melvin Maxwell Deputy