

1573

NUMERICAL GENERAL INDEX REG. PLUM-0

STATE OF NEBRASKA SCOTTS BLUFF COUNTY

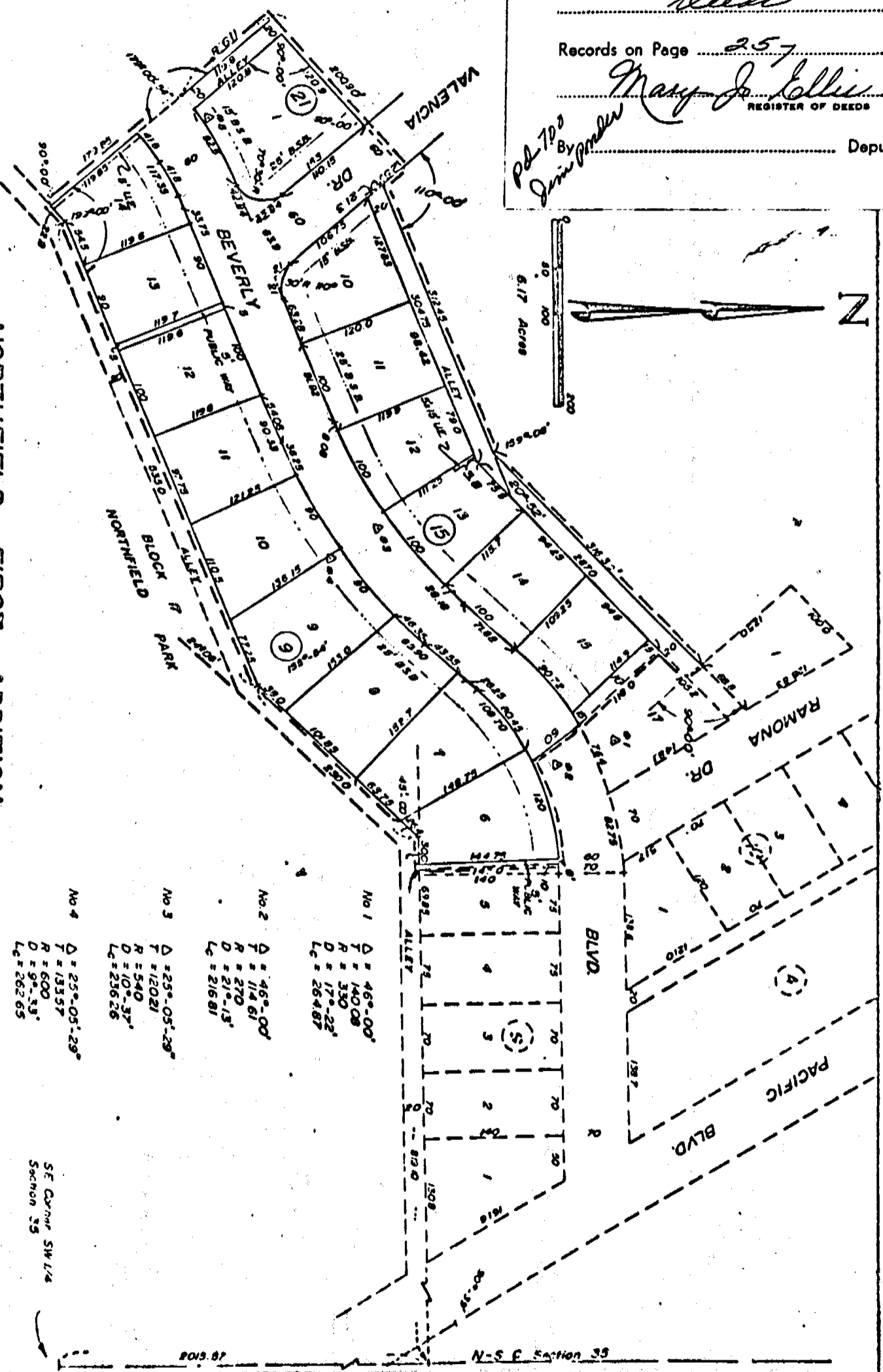
Entered on Numerical Index and filed for record the 9 day of June 1921, at 1:30 o'clock P.M., and recorded in Book 135 of

Records on Page 257

Mary J. Lillis REGISTER OF DEEDS

Deputy

NORTHFIELD FIRST ADDITION
LOTS 6 THRU 14, BLK 9; LOTS 10 THRU 16, BLK 15;
8 LOT 1, BLK 21
TO THE CITY OF GERING, NEBR
SITUATED ON PART OF THE SW 1/4 OF SECTION 35, T22N, R35W OF THE 6TH PM
SCOTTS BLUFF COUNTY, NEBRASKA



No 5
Δ = 89°-00'
T = 51.88
R = 310.00
D = 18°-29'
L = 102.60

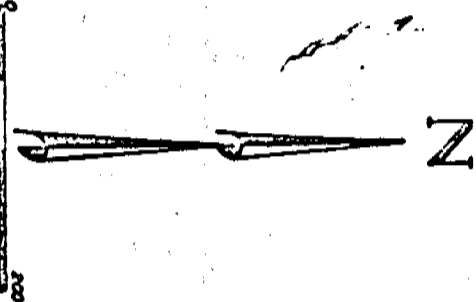
No 1 Δ = 46°-00'
T = 140.08
R = 330
D = 17°-22'
Lc = 264.87

No 2 Δ = 46°-00'
T = 114.61
R = 270
D = 21°-15'
Lc = 216.81

No 3 Δ = 25°-05'-29°
T = 120.21
R = 540
D = 10°-37'
Lc = 256.26

No 4 Δ = 25°-05'-29°
T = 133.57
R = 600
D = 9°-53'
Lc = 262.65

SE CORNER SW 1/4 SECTION 35



PLAT 87

N-S E Section 35

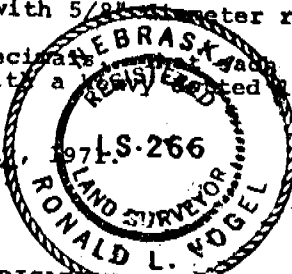
I, Ronald L. Vogel, a competent surveyor of Scotts Bluff County, Nebraska, hereby certify that I have surveyed Northfield First Addition, Lots 6 through 14, Block 9, Lots 10 through 16, Block 15, and Lot One, Block 21, to the City of Gering, Nebraska. That such subdivision is situated on a part of the Southwest Quarter (SW $\frac{1}{4}$) of Section Thirty-five (35), Township 22 North, Range 55 West of the 6th P.M., Scotts Bluff County, Nebraska and that the boundary of such subdivision is more particularly described as follows: Commencing at the Southeast corner of such SW $\frac{1}{4}$; thence North on the East line of such SW $\frac{1}{4}$ a distance of 2015.57 feet; thence a deflection angle left of 90 degrees 39 minutes a distance of 819.10 feet to the point of beginning, such point of beginning also being:

The Southwest corner of Lot 5, Block 9, Northfield First Addition to the City of Gering, Nebraska, then West on the South Line of such Lot 5, extended West, a distance of 30.00 feet to a point, such point being on the North Line of an alley, platted as a part of Block 17, Northfield First Addition to the City of Gering, Nebraska; then a deflection angle to the left of 45 degrees, 00 minutes, on the North Line of such alley, a distance of 230.00 feet; then a deflection angle to the right of 24 degrees, 06 minutes, on the North Line of such alley, a distance of 535.00 feet; then a deflection angle to the left of 19 degrees, 00 minutes, on the North Line of such alley, a distance of 22.8 feet; then a deflection angle to the right of 90 degrees, 00 minutes, a distance of 179.85 feet; then a deflection angle to the left of 00 degrees, 59 minutes, 06 seconds, a distance of 119.8 feet; then a deflection angle to the right of 90 degrees, 00 minutes, a distance of 200.90 feet; then a deflection angle to the left of 70 degrees, 00 minutes, a distance of 25.70 feet; then a deflection angle to the right of 90 degrees, 00 minutes, a distance of 312.45 feet. Then a deflection angle to the left of 20 degrees, 52 minutes, a distance of 316.30 feet to the Southwest corner of Lot One, Block 15, Northfield First Addition to the City of Gering, Nebraska; then a deflection angle to the right of 90 degrees, 00 minutes a distance of 20.00 feet to the North Line of Lot 17, Block 15, Northfield First Addition to the City of Gering, Nebraska, then westerly on the North Line of such Lot 17, Block 15 to the Northwest corner of such Lot 17; then Southeasterly on the West Line of such Lot 17, Block 15, Northfield First Addition, a distance of 178.00 feet to a point, such point being on a 21 degree 13 minute curve, which is the South Line and termination of Beverly Boulevard as previously platted with Lots One and 17, Block 15, Northfield First Addition to the City of Gering, Nebraska; then easterly on the South Line of Beverly Boulevard, as previously platted, to a point 5.00 feet North and on the Northerly extension of the West Line of Lot 5, Block 9, Northfield First Addition to the City of Gering, Nebraska; then South on such extension and the West Line of such Lot 5, Block 9, a distance of 145.00 feet to the point of beginning, containing an area of 6.17 acres.

That the accompanying plat is a true delineation of such subdivision drawn to a scale of 100 feet to the inch. That all corners are marked with 5/8 inch diameter reinforcing rods a minimum of 18 inches in length.

That all dimensions are in feet and decimals. Each Lot and Block bears its own number. That the boundary of the subdivision is shown with a dotted line and adjoining platted lands are shown with dotted lines for orientation.

WITNESS MY HAND AND SEAL this 5th day of May, 1971.



Ronald L. Vogel
Ronald L. Vogel, Nebraska Registered
Land Surveyor, L. S. 266

DEDICATION AND ANNEXATION

We, the undersigned being the owners of the part of the SW $\frac{1}{4}$ of Section 35, Township 22 North, Range 55 West of the 6th P. M., Scotts Bluff County, Nebraska, as described in the foregoing "Surveyor's Certificate", and shown by the accompanying plat, have caused such land to be surveyed and platted as Northfield First Addition, Lots 6 through 14, Block 9, Lots 10 through 16, Block 15, and Lot One, Block 21, to the City of Gering, Scotts Bluff County, Nebraska.

The above described and foregoing subdivision of Northfield First Addition, Lots 6, through 14, Block 9, Lots 10 through 16, Block 15, and Lot One, Block 21 and the streets, Drives, Boulevards and Alleys as appear on the plat is made with the free consent and in accordance with the desires of the undersigned owners.

We hereby dedicate the Streets, Drives, Boulevards and Alleys designated upon and referred to in such plat to the use and benefit of the public and further annex and make such real estate a part of the City of Gering, Scotts Bluff County, Nebraska.

Dated this 21st day of May, 1971.

ATTEST: *O. N. Fyaten*
O. N. Fyaten, Secretary

by: *William C. Davis*
DOME DEVELOPMENT COMPANY
William C. Davis, President

ACKNOWLEDGEMENT

State of Nebraska)
Scotts Bluff County) ss

On this 21st day of May, 1971, before me, a Notary Public in and for said County personally came William C. Davis, President of Dome Development Company, a corporation, to me personally known to be the identical person and President of such Company whose name is affixed to the foregoing "Dedication and Annexation" and acknowledged the execution thereof to be his voluntary act and deed as such officer and voluntary act and deed of such corporation and that the corporate seal was thereto affixed by its authority.

Witness my hand and seal the day and year last above written.

My Commission expires: October 9, 1974

Geraldine Matthias
Notary Public

ACCEPTANCE AND APPROVAL

The foregoing subdivision of Northfield First Addition, Lots 6 through 14, Block 9, Lots 10 through 16, Block 15, and Lot One, Block 21, approved and accepted by the Mayor and City Council of the City of Gering, Nebraska, by Ordinance No. 711 duly passed this 24th day of May, 1971.

ATTEST: *Richard Brown*
City Clerk

W. Richard Peck
Mayor