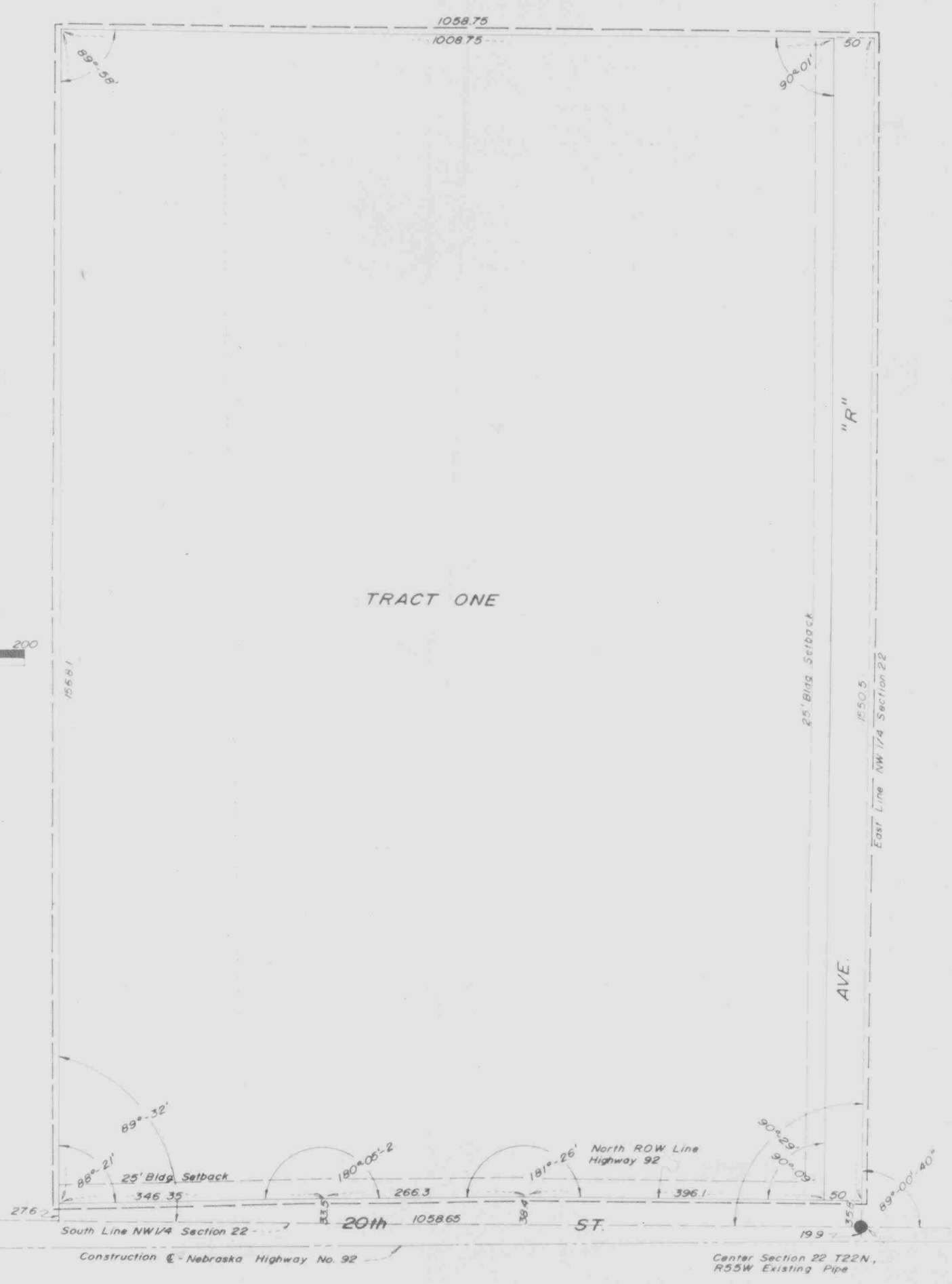
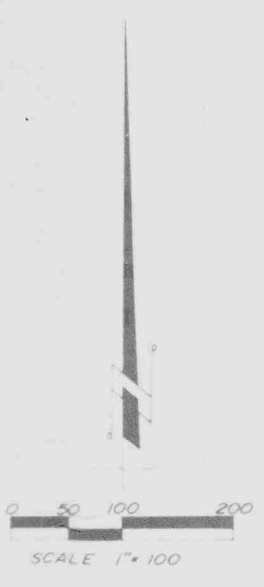


PLAT SHOWING AMENDED ORIGINAL PLAT AND SURVEYORS
 CERTIFICATE OF BARBOUR SUBDIVISION TRACT ONE
 A SUBDIVISION OF PART OF THE NW 1/4 OF SECTION 22 T22N, R55W
 OF THE 6th P.M. SCOTTS BLUFF COUNTY, NEBRASKA

556



556

433

AMENDED SURVEYOR'S CERTIFICATE

I, Ronald L. Vogel, a competent surveyor of Scotts Bluff County, Nebraska, hereby certify that I have surveyed "BARBOUR SUBDIVISION", Tract One, a subdivision of part of the Northwest Quarter (NW¼) of Section Twenty-Two (22), Township Twenty-Two (22) North, Range Fifty-Five (55) West of the 6th P.M., Scotts Bluff County, Nebraska, the boundary of such subdivision being more particularly described as follows:

Commencing at the Southeast corner of such NW¼; thence North on the East line of such NW¼ a distance of 35.8 feet to the North Right-of-Way line of Nebraska Highway No. 92 and the point of beginning; thence a deflection angle left of 90 degrees 09 minutes along such Right-of-Way line, a distance of 446.1 feet; thence a deflection angle left of 1 degree 26 minutes along such Right-of-Way line, a distance of 266.3 feet; thence a deflection angle left of 346.35 feet to a point, such point being 27.6 feet North of the South line of such NW¼; thence a deflection angle right of 91 degrees 39 minutes a distance of 1568.1 feet; thence a deflection angle right of 90 degrees 02 minutes a distance of 1058.75 feet to the East line of such NW¼; thence a deflection angle right of 89 degrees 59 minutes along the East line of such NW¼ a distance of 1550.5 feet to the point of beginning, containing an area of 37.89 acres, more or less.

That the accompanying plat is a true delineation of such survey drawn to a scale of 100 feet to the inch.

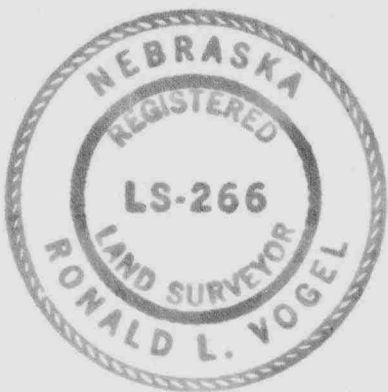
That each Tract and Lot bears its own number.

That all corners are marked with 5/8" x 36" iron rods.

That all dimensions are in feet and decimals.

That the boundary of the subdivision is shown on the plat with a heavy dotted line.

WITNESS MY HAND AND SEAL THIS 4th day of March, 1971.



Ronald L. Vogel
RONALD L. VOGEL, NEBRASKA REGISTERED LAND SURVEYOR, L.S. 266

556

NUMERICAL GENERAL TAX REG. PICTURED

STATE OF NEBRASKA } ss. SCOTTS BLUFF COUNTY

Entered on Numerical Index and filed for

record the 5 day of March

1971, at 11:05 o'clock A.M., and

recorded in Book 134 of

Records on Page 432

REGISTER OF DEEDS

By Mary Jo Keller Deputy