

NW Corner Section 22

AMENDED

BARBOUR SECOND SUBDIVISION

BLOCK ONE - LOTS NINE & TEN

A SUBDIVISION OF PART OF THE NW 1/4 OF SECTION 22 T22N, R55W OF THE 6th P.M., SCOTTS BLUFF COUNTY, NEBRASKA

306

NUMERICAL
GENERAL
TAX REG.
PICTURED

Plat Book 3
Page 55, 56

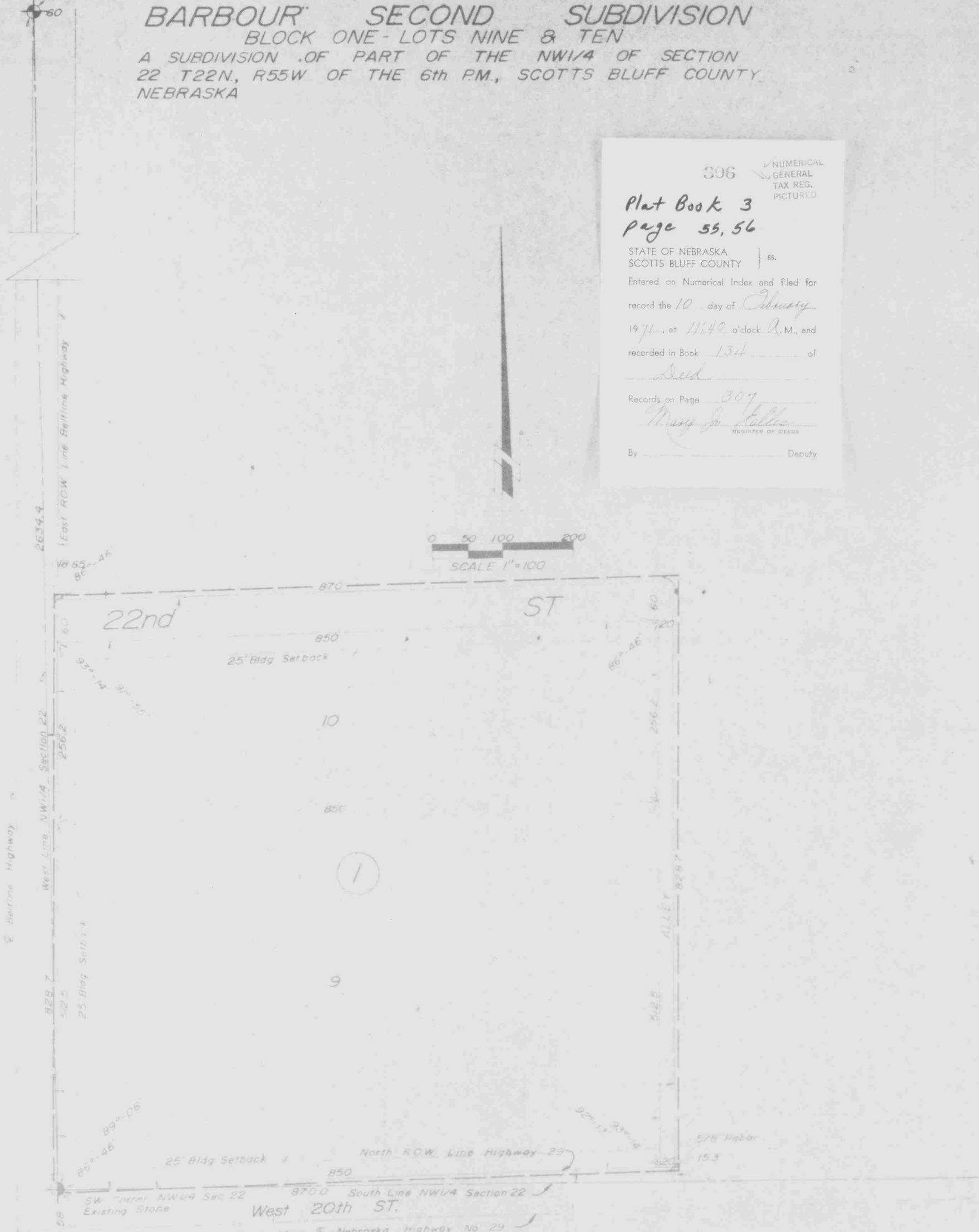
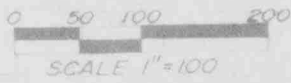
STATE OF NEBRASKA } ss.
SCOTTS BLUFF COUNTY

Entered on Numerical Index and filed for
record the 10 day of January
1971, at 11:42 o'clock A.M., and
recorded in Book 134 of

Records on Page 307

Mary Jo Kelleher
REGISTER OF DEEDS

By _____ Deputy



R S HUNT'S TRACTS

268	64	65	66	67	68	69	70
165.6	165	82.5	82.5	165	165	165	148.13
63	62	61	60	59	58	57	

306

SURVEYOR'S CERTIFICATE

I, Ronald L. Vogel, a competent surveyor of Scotts Bluff County, Nebraska, hereby certify that I have surveyed "BARBOUR SECOND SUBDIVISION", Lots 9 and 10, Block One, a subdivision of part of the Northwest Quarter (NW $\frac{1}{4}$) of Section Twenty-Two (22), Township Twenty-Twp (22) North, Range Fifty-Five (55) West of the 6th P.M., Scotts Bluff County, Nebraska, the boundary of such subdivision being more particularly described as follows:

Beginning at the Southwest corner of such NW $\frac{1}{4}$, such corner also being the intersection of the East Right-of-Way line of the Beltline Highway and the North Right-of-Way line of Nebraska Highway No. 29; thence North on the East Right-of-Way line of the Beltline Highway a distance of 828.7 feet to a point, such point being 18.85 feet East of the West line of such NW $\frac{1}{4}$; thence a deflection angle right of 86 degrees 46 minutes a distance of 870.0 feet; thence a deflection angle right of 93 degrees 14 minutes a distance of 828.7 feet to a point on the North Right-of-Way line of Nebraska Highway No. 29, such point being 15.3 feet North of the South line of such NW $\frac{1}{4}$; thence a deflection angle right of 86 degrees 46 minutes, along such Right-of-Way line a distance of 870.0 feet to the point of beginning, containing an area of 16.55 acres, more or less.

That the accompanying plat is a true delineation of such survey drawn to a scale of 100 feet to the inch.

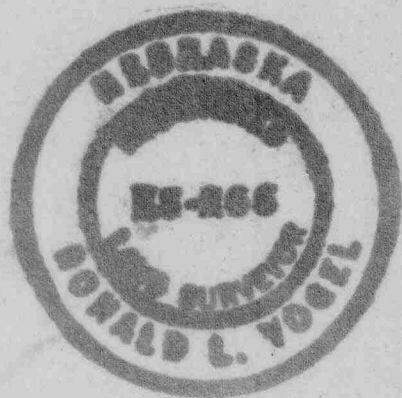
That each Block and Lot bears its own number.

That all corners are marked with 5/8" x 36" iron rods.

That all dimensions are in feet and decimals.

That the boundary of the subdivision is shown on the plat with a heavy dotted line.

WITNESS MY HAND AND SEAL THIS 6th day of January, 1971.



Ronald L. Vogel
RONALD L. VOGEL, NEBRASKA REGISTERED
LAND SURVEYOR, L.S. 266

SUBDIVISION, DEDICATION, RELINQUISHMENT

We, the undersigned, being the owners of that part of the NW $\frac{1}{4}$ of Section 22, Township 22 North, Range 55 West of the 6th P.M., Scotts Bluff County, Nebraska, have caused such real estate to be surveyed and platted as "BARBOUR SECOND SUBDIVISION", Lots 9 and 10, Block One, a subdivision of part of the NW $\frac{1}{4}$ of Section 22, Township 22 North, Range 55 West of the 6th P. M., Scotts Bluff County, Nebraska as shown on the accompanying plat and by the "Surveyor's Certificate".

The foregoing subdivision of real estate and the streets and alleys as appear on the accompanying plat is made with the free consent and in accordance with the desires of the undersigned owners.

We hereby dedicate the streets and alleys designated upon and referred to in the accompanying plat to the use and benefit of the public, and hereby relinquish all right of access from the land in such subdivision to the Beltline Highway which parallels the West line of the subdivision, and from such highway to the land in the subdivision, except, indirectly, over 22nd Street as shown in the plat and over Nebraska Highway No. 29.

Dated this 27th day of January, 1971.

Lillian Elizabeth Barbour
Lillian Elizabeth Barbour

Wilburn Owen Barbour
Wilburn Owen Barbour

HINER IMPLEMENT CO.

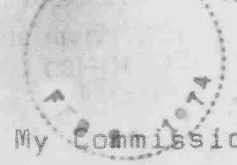
by Travis J. Hiner
Vice-President

State of Nebraska) ss
Scotts Bluff County)

ACKNOWLEDGEMENT

On this 27th day of January, 1971, before, me, a Notary Public, in and for said County, personally came WILBURN OWEN BARBOUR AND LILLIAN ELIZABETH BARBOUR, husband and wife and TRAVIS HINER, Vice-President of Hiner Implement Company, to me personally know to be the identical persons whose names are affixed to the foregoing "Subdivision, Dedication and Relinquishment, and acknowledged the same to be their voluntary act and deed.

WITNESS MY HAND AND NOTARIAL SEAL the day and year last written above.



Betty J. Rupp
Notary Public

My Commission expires: February 26, 1974

APPROVAL AND ACCEPTANCE

The foregoing plat of "BARBOUR SECOND SUBDIVISION" and the accompanying "Subdivision, Dedication and Relinquishment", approved and accepted by the Mayor and City Council of the City of Scottsbluff by resolution duly passed this 8th day of February, 1971.

ATTEST

Th. L. Ferguson
City Clerk

L. A. Thomas
Mayor

