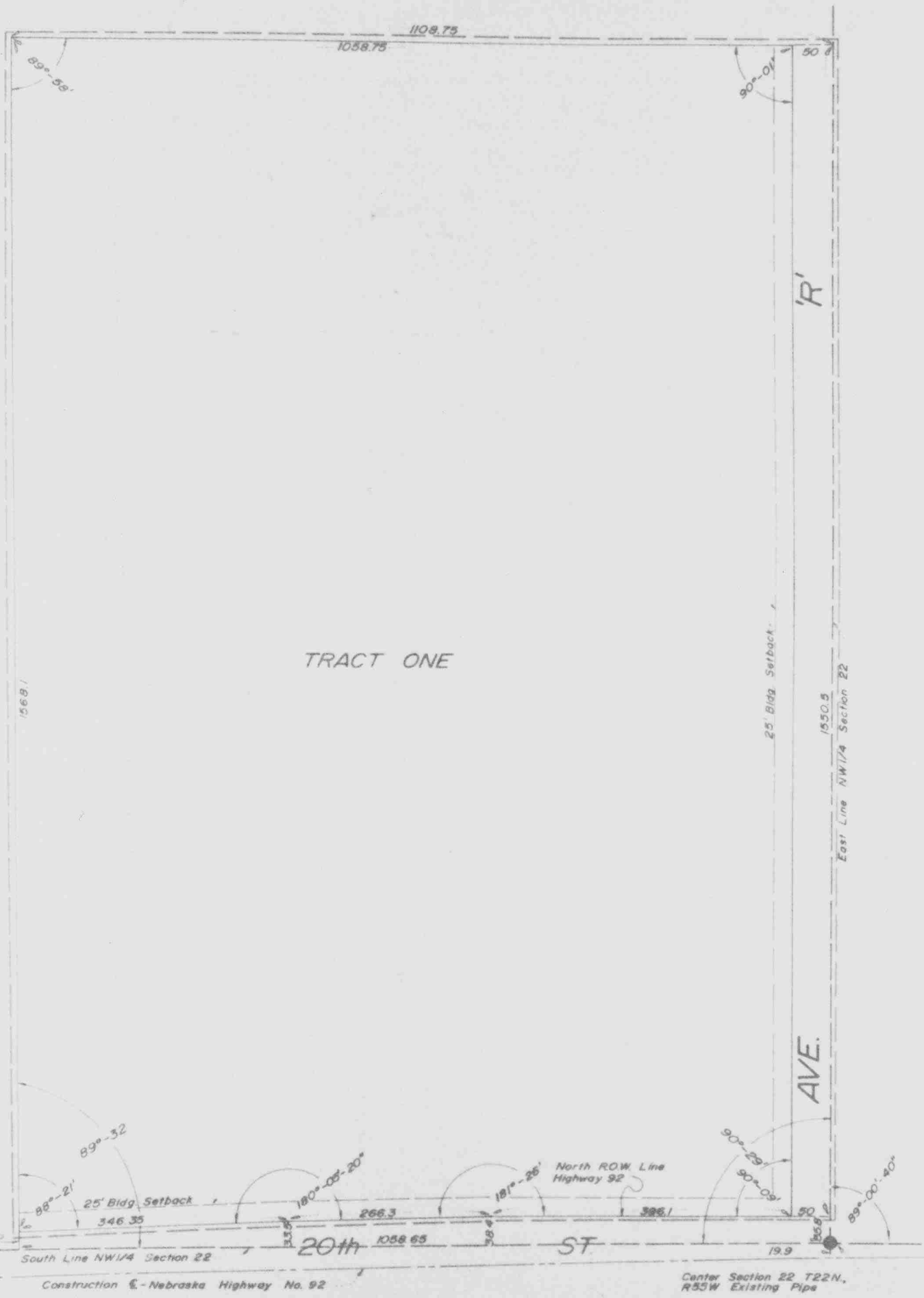
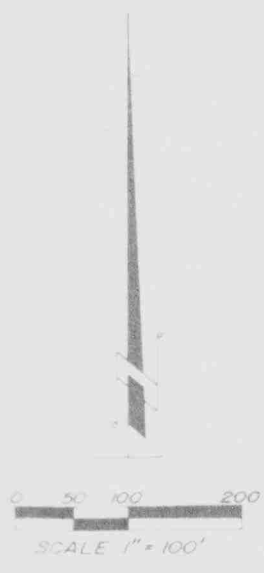


BARBOUR SUBDIVISION 102 TRACT ONE

A SUBDIVISION OF PART OF THE NW1/4 OF SECTION 22
T22N., R55W OF THE 6th P.M., SCOTTS BLUFF COUNTY,
NEBRASKA



04

SURVEYOR'S CERTIFICATE

102

I, Ronald L. Vogel, a competent surveyor of Scotts Bluff County, Nebraska, hereby certify that I have surveyed "BARBOUR SUBDIVISION", Tract One, a subdivision of part of the Northwest Quarter (NW $\frac{1}{4}$) of Section Twenty-Two (22), Township Twenty-Two (22) North, Range Fifty-Five (55) West of the 6th P.M., Scotts Bluff County, Nebraska, the boundary of such subdivision being more particularly described as follows:

Commencing at the Southeast corner of such NW $\frac{1}{4}$; thence North on the East line of such NW $\frac{1}{4}$ a distance of 35.8 feet to the North Right-of-Way line of Nebraska Highway No. 92 and the point of beginning; thence a deflection angle left of 90 degrees 09 minutes along such Right-of-Way line, a distance of 396.1 feet; thence a deflection angle left of 1 degree 26 minutes along such Right-of-Way line, a distance of 266.3 feet; thence a deflection angle left of 0 degrees 05 minutes along such Right-of-Way line, a distance of 346.35 feet to a point, such point being 27.6 feet North of the South line of such NW $\frac{1}{4}$; thence a deflection angle right of 91 degrees 39 minutes a distance of 1568.1 feet; thence a deflection angle right of 90 degrees 02 minutes a distance of 1108.75 feet to the East line of such NW $\frac{1}{4}$; thence a deflection angle right of 89 degrees 59 minutes along the East line of such NW $\frac{1}{4}$; a distance of 1550.5 feet to the point of beginning, containing an area of 39.69 acres, more or less.

That the accompanying plat is a true delineation of such survey drawn to a scale of 100 feet to the inch.

That each Tract and Lot bears its own number.

That all corners are marked with 5/8" x 36" iron rods.

That all dimensions are in feet and decimals.

That the boundary of the subdivision is shown on the plat with a heavy dotted line.

WITNESS MY HAND AND SEAL THIS 6th day of January, 1971.

Ronald L. Vogel
RONALD L. VOGEL, REGISTERED NEBRASKA
LAND SURVEYOR, L.S. 266



DEDICATION

We, the undersigned, being the owners of that part of the NW $\frac{1}{4}$ of Section 22, Township 22 North, Range 55 West of the 6th P.M., Scotts Bluff County, Nebraska, have caused such real estate to be surveyed and platted as "BARBOUR SUBDIVISION" Tract One, a subdivision of part of the NW $\frac{1}{4}$ of Section 22, Township 22 North, Range 55 West of the 6th P.M., Scotts Bluff County, Nebraska, as shown on the accompanying plat and by the "Surveyor's Certificate".

The foregoing subdivision of real estate and the Streets, Avenues and Alleys, as appear on the accompanying plat is made with the free consent and in accordance with the desires of the undersigned owners.

We hereby dedicate the Streets, Avenues and Alleys designated upon and referred to in the accompanying plat to the use and benefit of the public.

Dated this 7th day of January, 1971.

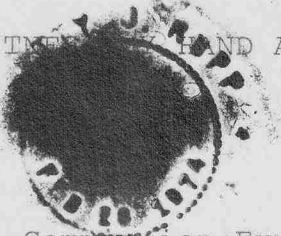
Lillian Elizabeth Barbour Wilburn Owen Barbour
Lillian Elizabeth Barbour Wilburn Owen Barbour

ACKNOWLEDGEMENT

State of Nebraska) ss
Scotts Bluff County)

On this 7th day of January, 1971, before me, a Notary Public in and for said County, personally came WILBURN OWEN BARBOUR AND LILLIAN ELIZABETH BARBOUR, husband and wife, to me personally known to be the identical persons whose names are affixed to the foregoing "Dedication" and acknowledged the same to be their voluntary act and deed.

WITNESSED BY MY HAND AND NOTARIAL SEAL THE day and year last written above.



Betty J. Pupp
Notary Public

My Commission Expires February 26, 1974

APPROVAL AND ACCEPTANCE

The foregoing plat of "BARBOUR SUBDIVISION" approved and accepted by the Mayor and City Council of the City of Scottsbluff by resolution duly passed this 11th day of JANUARY, 1971.

ATTEST:

W. A. Thomas
Mayor

A. L. Ferguson
City Clerk



103
✓ NUMERICAL
✓ GENERAL
TAX REG.
PICTURED

STATE OF NEBRASKA } ss.
SCOTTS BLUFF COUNTY }

Entered on Numerical Index and filed for

record the 14 day of January

1971, at 3:05 o'clock P. M., and

recorded in Book 134 of

Deeds

Records on Page 203

Mary Jo Ellis
REGISTER OF DEEDS

By _____ Deputy

104
✓ NUMERICAL
✓ GENERAL
TAX REG.
PICTURED

STATE OF NEBRASKA } ss.
SCOTTS BLUFF COUNTY }

Entered on Numerical Index and filed for

record the 14 day of January

1971, at 3:07 o'clock P. M., and

recorded in Book 134 of

Deeds

Records on Page 206

Mary Jo Ellis
REGISTER OF DEEDS

By _____ Deputy

