

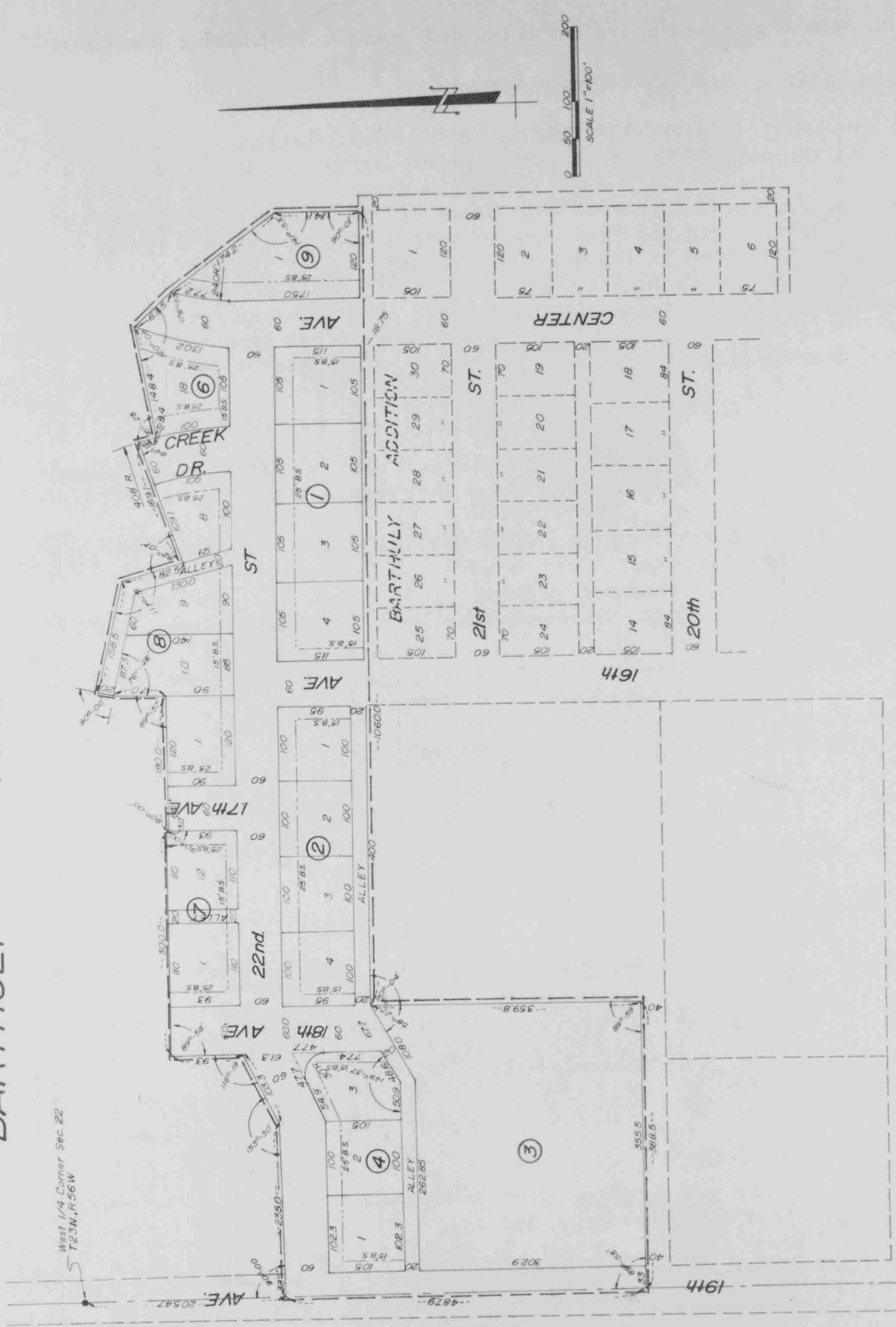
NOTE: See Replat Lot 1, Block 8, Barthuly First Add., Deed 202 Page 692

2812

ADDITION

FIRST

BARTHULY



To the City of Mitchell, Nebraska Lots 1 thru 4, Block 1; Lots 1 thru 4, Block 2; Block 3; Lots 1 thru 3, Block 4; Lots 1 & 12, Block 7; Lots 1, 8, 9 & 10, Block 8; Lot 18, Block 6; & Lot 1, Block 9; A Subdivision of Part of the N.1/2 S.W.1/4 of Section 22 T23N, R56W of the 6th P.M., Scotts Bluff County, Nebraska

SURVEYOR'S CERTIFICATE

I, Ronald L. Vogel, a competent surveyor of Scotts Bluff County, hereby certify that I have surveyed Barthuly First Addition, Lots 1 through 4, Block 1; Lots 1 through 4, Block 2; Block 3; Lots 1 through 3, Block 4; Lots 1 and 12, Block 7; Lots 1, 8, 9 and 10, Block 8; Lot 18, Block 6 and Lot 1, Block 9 to the City of Mitchell, Scotts Bluff County, Nebraska. That such Addition is a subdivision of a part of the North Half of the Southwest Quarter of Section 22, Township 23 North, Range 56 West of the 6th P.M., Scotts Bluff County, Nebraska, the boundary of such subdivision being more particularly described as follows:

Beginning at a point on the West line of such  $N\frac{1}{2} SW\frac{1}{4}$ , such point being 205.47 feet South of the Northwest corner of such  $N\frac{1}{2} SW\frac{1}{4}$ ; thence East at right angles to such West line a distance of 235.0 feet; thence deflection angle left 26 degrees 30 minutes a distance of 103.3 feet; thence deflection angle left 63 degrees 41 minutes a distance of 93.0 feet; thence deflection angle right 90 degrees 02 minutes a distance of 300.0 feet; thence deflection angle right 90 degrees 00 minutes a distance of 3.0 feet; thence deflection angle left 90 degrees 00 minutes a distance of 180.0 feet; thence deflection angle left 90 degrees 03 minutes a distance of 70.0 feet; thence deflection angle right 13 degrees 14 minutes a distance of 20.0 feet; thence deflection angle right 90 degrees 00 minutes a distance of 158.5 feet; thence deflection angle right 62 degrees 29 minutes a distance of 82.5 feet; thence deflection angle left 97 degrees 53 minutes a distance of 169.1 feet; thence deflection angle right 95 degrees 48 minutes a distance of 28.4 feet; thence deflection angle left 84 degrees 35 minutes a distance of 148.4 feet; thence deflection angle right 59 degrees 52 minutes a distance of 67.5 feet; thence deflection angle right 3 degrees 03 minutes a distance of 174.2 feet; thence deflection angle right 38 degrees 07 minutes a distance of 114.1 feet to a point on the North line of an alley platted in Barthuly Addition to the City of Mitchell; thence deflection angle right 89 degrees 59 minutes, along the North line of such alley extended a distance of 1060.0 feet; thence deflection angle left 89 degrees 56 minutes a distance of 359.8 feet; thence deflection angle right 90 degrees 01 minutes a distance of 388.5 feet to the West line of such  $N\frac{1}{2} SW\frac{1}{4}$ ; thence deflection angle right 90 degrees 05 minutes along the West line of such  $N\frac{1}{2} SW\frac{1}{4}$  a distance of 487.9 feet to the point of beginning, containing an area of 11.22 acres.

That the accompanying plat is a true delineation of such survey drawn to a scale of 100 feet to the inch.

That each Lot and Block bears its own number.

That all corners are marked with iron rods.

That all dimensions are in feet and decimals.

That the boundary of the subdivision is shown with a heavy dotted line.

WITNESS MY HAND AND SEAL THIS 15th day of September, 1970.



*Ronald L. Vogel*

RONALD L. VOGEL, Nebraska Registered  
Land Surveyor, L.S. 266



DEDICATION AND ANNEXATION

We, the undersigned, being the owners of that part of the N½ SW¼ of Section 22, Township 23 North, Range 56 West of the 6th P.M., Scotts Bluff County, Nebraska, have caused such real estate to be surveyed and platted as Barthuly First Addition, Lots 1 through 4, Block 1; Lots 1 through 4, Block 2; Block 3; Lots 1 through 3, Block 4; Lots 1 and 12, Block 7; Lots 1, 8, 9 and 10, Block 8; Lot 18, Block 6 and Lot 1, Block 9, an addition to the City of Mitchell, Scotts Bluff County, Nebraska, as shown by the accompanying Plat and Surveyor's Certificate.

The foregoing subdivision of real estate and the Streets, Drives, Alleys and building setback designations as appear in the accompanying Plat is made with the free consent and in accordance with the desires of the undersigned owners.

We hereby dedicate the Streets, Avenues, and Alleys designated upon and referred to in the accompanying plat to the use and benefit of the public and further annex and make such real estate a part of the City of Mitchell.

Dated this 15<sup>TH</sup> day of September, 1970

Henry Barthuly  
Henry Barthuly

Elizabeth F. Barthuly  
Elizabeth F. Barthuly

ACKNOWLEDGEMENT

STATE OF NEBRASKA ) ss  
SCOTTS BLUFF COUNTY)

On this 15th day of September, 1970, before me, a Notary Public, in and for said County, personally came Henry Barthuly and Elizabeth F. Barthuly, husband and wife, to me known to be the identical persons whose names are affixed to the foregoing "DEDICATION AND ANNEXATION" and acknowledged the execution thereof to be their voluntary act and deed.

WITNESS MY HAND AND NOTARIAL SEAL the day and year last above written.



G. Randolph Reef  
Notary Public

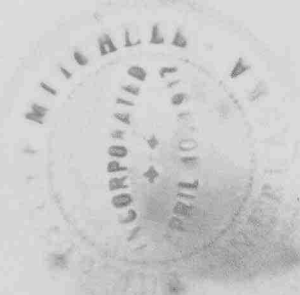
My commission expires: April 3, 1972

APPROVAL AND ACCEPTANCE

The foregoing plat of Barthuly First Addition approved and accepted by the Mayor and City Council of the City of Mitchell, Nebraska by resolution duly passed this 15 day of Sept., 1970.

K.E. Mitchell  
MAYOR

ATTEST: Martle Edquist  
CITY CLERK



2812  
STATE OF NEBRASKA, Scotts Bluff Co. ss.  
Entered on Numerical Index and filed for record the 6 day of October 1970  
at 2:30 o'clock P.M. and recorded in Book 133 of Deeds on Page 438  
Raymond Ellis  
REGISTER OF DEEDS  
By \_\_\_\_\_ Deputy

✓ NUMERICAL  
✓ GENERAL  
TAX REG.  
PICTURED