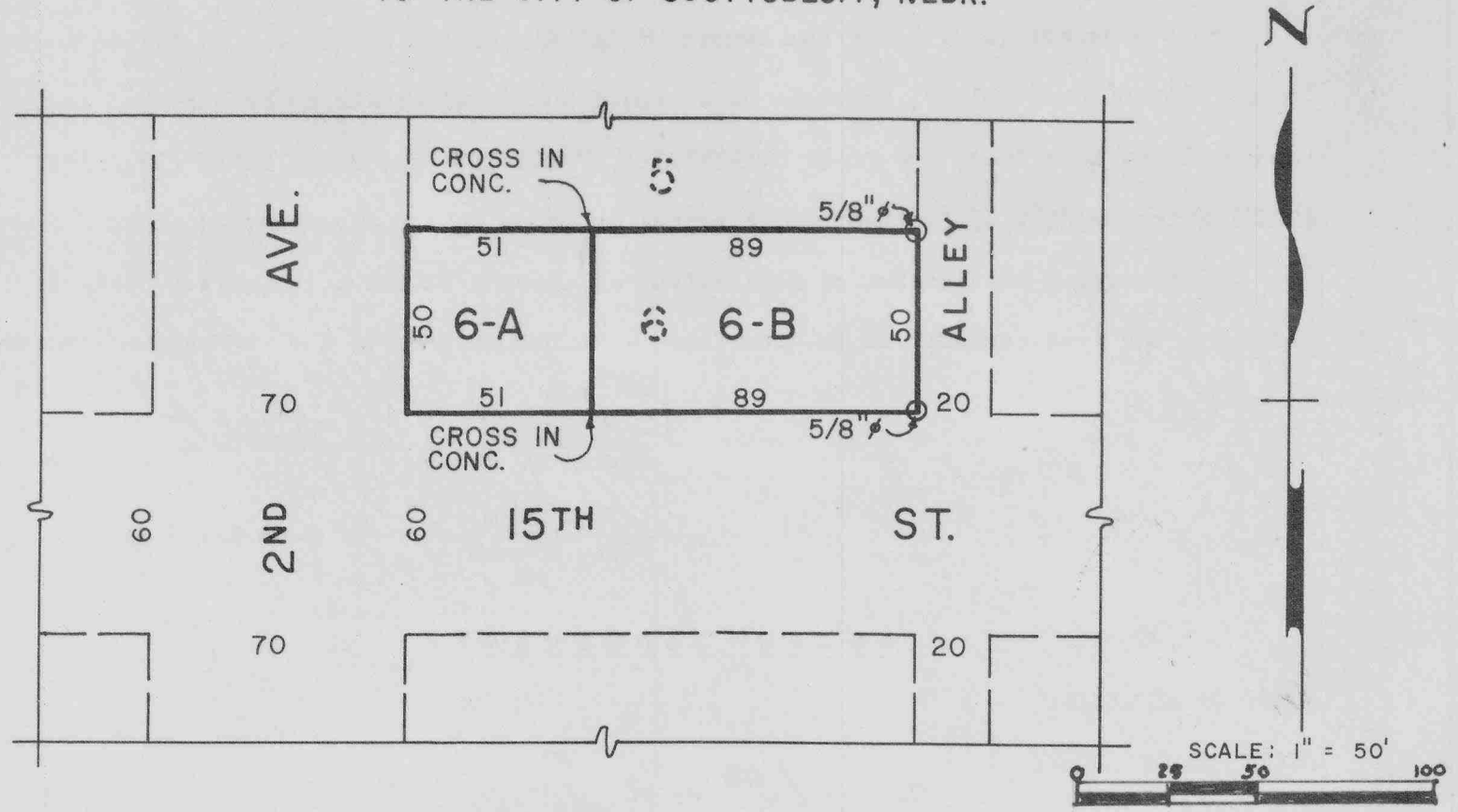


2777

SUBDIVISION OF LOT 6, BLOCK 3, FIRST ADDITION TO THE CITY OF SCOTTSBLUFF, NEBR.



--- SURVEYOR'S CERTIFICATE ---

STATE OF NEBRASKA)
) ss:
 SCOTTS BLUFF COUNTY)

I, E. Y. Grupe, a competent surveyor of Scotts Bluff County, do hereby certify that the above survey of the SUBDIVISION OF LOT 6, BLOCK 3, FIRST ADDITION to the City of Scottsbluff, Nebraska has been prepared under my direction.

That such survey has subdivided such Lot 6 into Lots "6-A" and "6-B".

That the accompanying plat is a correct delineation of such survey drawn to a scale of 50 feet to one inch, with all dimensions shown thereon in feet and decimals.

That each Lot bears its own identifying letter.

That the boundaries of Lot "6-B" are marked with 5/8" X 36" iron rods and crosses cut in the concrete pavement. The West corners of Lot "6-A" are beneath a masonry wall and were not set.

That the boundary of such subdivision is shown on the accompanying plat with a continuous heavy solid line.

That the adjoining lands, streets and avenues are shown in broken lines outside the subdivision for orientation purposes only.

WITNESS MY HAND AND SEAL
 This 11th day of August, 1970.

E. Y. Grupe
 E. Y. Grupe Scottsbluff, Nebraska

Nebraska Registered Land Surveyor - L.S. 69

