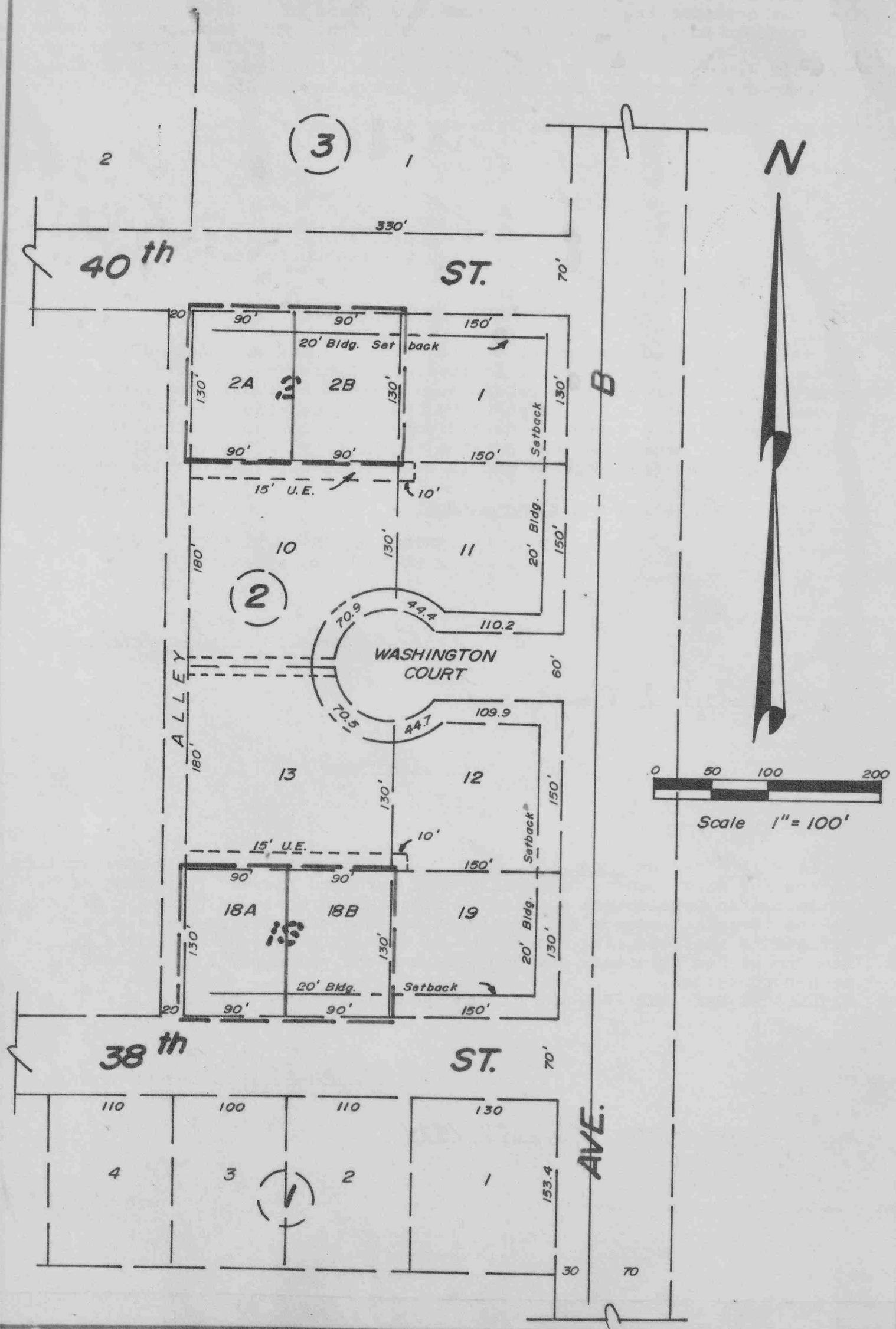


SUBDIVISION OF LOTS 2 & 18 BLOCK 2, GEORGE BALTES ADDITION TO THE CITY OF SCOTTSBLUFF, NEBRASKA



SUBDIVISION OF LOTS 2 AND 18, BLOCK 2, GEORGE BALTES ADDITION TO THE CITY OF SCOTTSBLUFF, NEBRASKA: SHEET 2 OF 3

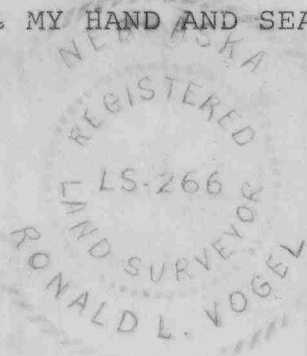
2751

SURVEYOR'S CERTIFICATE

I, Ronald L. Vogel, a competent surveyor of Scotts Bluff County, Nebraska, hereby certify that I have surveyed a SUBDIVISION OF LOTS TWO AND EIGHTEEN, BLOCK TWO, GEORGE BALTES ADDITION to the City of Scottsbluff, Nebraska, according to the recorded plat thereof, and have surveyed Lot 2 into two Lots to be known as Lots 2A and 2B and Lot 18 into two Lots to be known as Lots 18A and 18B.

That the accompanying plat is a true delineation of such survey and subdivision drawn to a scale of 100 feet to the inch. That each new Lot bears its own number. That all corners are marked with 5/8"x18" iron rods. That all dimensions are in feet and decimals. That the boundary of the Lots subdivided are shown on the Plat with a heavy dotted line.

WITNESS MY HAND AND SEAL this 14th day of September, 1970.



Ronald L. Vogel
RONALD L. VOGEL, NEBRASKA REGISTERED
LAND SURVEYOR L.S. 266

STATEMENT OF OWNERSHIP

We, the undersigned, being the owners of Lots 2 and 18, Block 2, George Baltas Addition to the City of Scottsbluff, Nebraska, according to the recorded plat thereof, have caused such Lots to be subdivided into Lots 2A and 2B and 18A and 18B as shown by the accompanying plat and described in the accompanying Surveyor's Certificate. The foregoing subdivision of Lots 2 and 18, George Baltas Addition to the City of Scottsbluff, Nebraska is made with the free consent and in accordance with the desires of the undersigned owners.

Dated this 14 day of SEPTEMBER, 1970:

METROPOLITAN DEVELOPMENT COMPANY,
a Nebraska corporation

by: Bernhard Kleven
Bernhard Kleven, President

ATTEST: Robert E. Benggrew
Secretary

ACKNOWLEDGEMENT

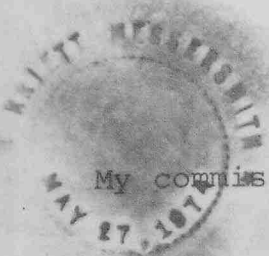
STATE OF NEBRASKA)
SCOTTS BLUFF COUNTY) ss

On this 14th day of September, 1970, before me, a Notary Public, in and for said County, personally came Bernhard Kleven, President of Metropolitan Development Company, a Nebraska corporation, to me known to be the identical person and President of such corporation whose name is affixed to the foregoing "Statement of Ownership" and acknowledged the same to be his voluntary act and deed and the voluntary act and deed of such corporation.

WITNESS MY HAND AND SEAL the day and year last above written.

L. Harriet Messersmith
Notary Public

My commission expires: May 27, 1974.



SUBDIVISION OF LOTS 2 AND 18, BLOCK 2, GEORGE BALTES ADDITION TO THE CITY OF SCOTTSBLUFF, NEBRASKA: SHEET 3 OF 3

2751

APPROVAL AND ACCEPTANCE

The accompany SUBDIVISION OF LOTS TWO AND EIGHTEEN, BLOCK TWO, GEORGE BALTES ADDITION TO THE CITY OF SCOTTSBLUFF, NEBRASKA to Lots 2A and 2B and Lot 18A and 18B is hereby approved and accepted by the Mayor and City Council of the City of Scottsbluff, Nebraska, by resolution duly passed this 28th day of September, 1970.

E. G. Thomas
Mayor

ATTEST: A. L. Ferguson
City Clerk



2751

- NUMERICAL
- GENERAL
- TAX REG.
- PICTURED

STATE OF NEBRASKA } ss.
SCOTT'S BLUFF COUNTY }

Entered on Numerical Index and filed for record the 1 day of October 1970, at 8:50 o'clock A.M., and recorded in Book 132 of Deeds

Records on Page 403
Mary Jo Ellis
REGISTER OF DEEDS

By _____ Deputy