

DEED RECORD, No. 13

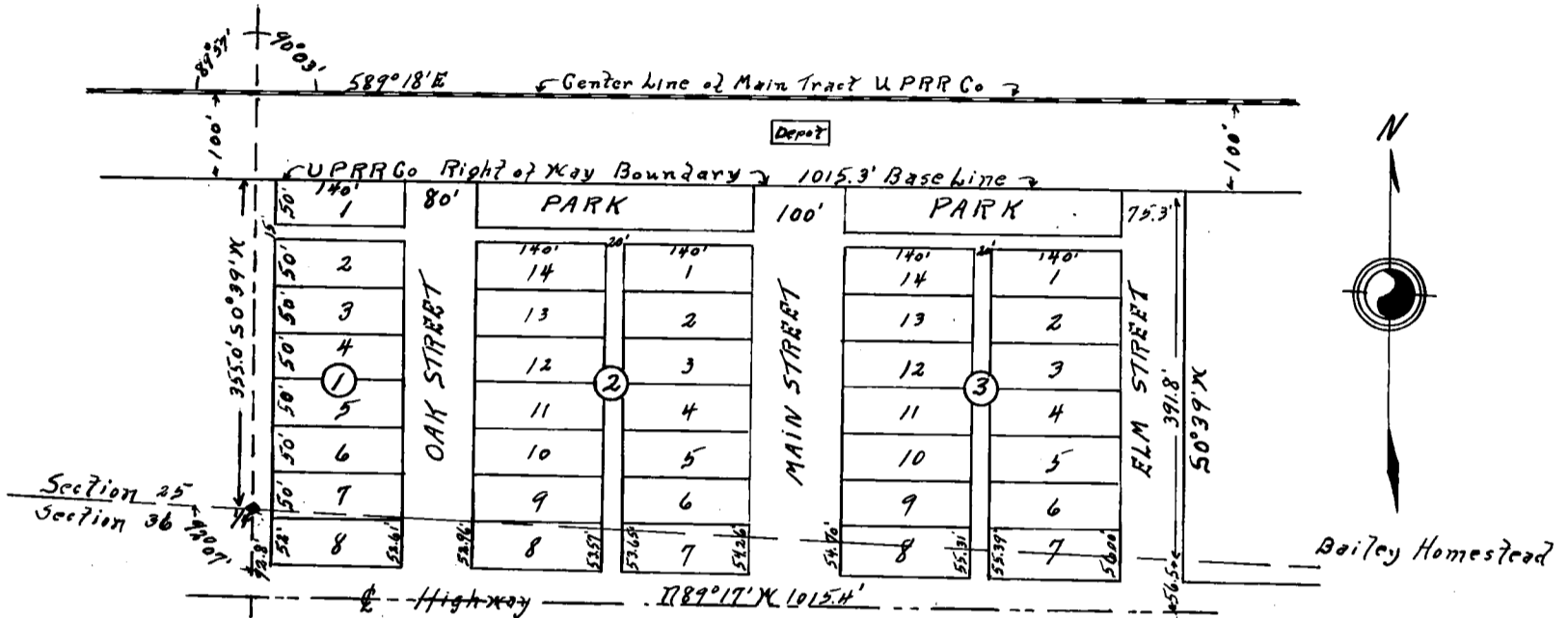
Elizabeth B. Nodacker et al
to
The Public Use

STATE OF NEBRASKA, Scotts Bluff County, ss.
Entered on Numerical Index and filed for record the 5 day of December, 1922, at 2 o'clock P.M. and recorded in Book 13 of Deeds on Page 611.

R. G. Neeley, Register of Deeds.

Plat & Dedication
For Townsite of
B A I L E Y V U E
Nebraska.

Scale: 1" = 200' Drawn by: A M Easterday



SURVEYOR'S CERTIFICATE

The State of Nebraska,)
County of Scottsbluff.) ss.

I the undersigned do hereby certify that on the Second day of January 1922 I surveyed the townsite of BAILEYVUE in Scotts Bluff County Nebraska according to the plat hereof; that the dimensions of all the plots or parcels of ground in this townsite lying in Sections 25 and 36 Township Twenty-three (23) North, Range Fifty-seven (57) West, 6th P.M. Nebraska are as hereon shown, that the dimensions of all Blocks, Lots, Streets and alleys are as on said plat shown; That the section corners of Government Sections 25 and 36 in Township Twenty-three (23) North, Range Fifty-seven (57) West and the $\frac{1}{4}$ Corner common to Sections 25 and 36 heretofore described are plainly marked by concrete posts, each nine (9) inches square on top and thirty (30) inches long, set thirty (30) inches in the ground; that the northwest corner of said Townsite lies in the south right of way line of the Union Pacific Railroad and bears north no degrees thirty-nine minutes ($0^{\circ}39'$) East, Three hundred Fifty-five (355.0) feet from the South Quarter Corner of Section Twenty-five (25) heretofore described. That said Right-of-Way line bears South Eighty-nine degrees eighteen minutes ($89^{\circ}18'$) East, is One Hundred (100) feet distant from the center line of the Union Pacific Railroad Company main tract, and the same is taken as the base line for this survey and plat; all the Blocks surveyed being at right angles thereto and all lots and block corners were by me marked with fir stakes two (2) inches square and fourteen (14) inches long, driven well into the ground. That Streets and Alleys not otherwise specified are of the width, length and direction as on said plat shown.

In Witness whereof, I have hereunto set my hand this 10th day of August, A D 1922

A. M. Easterday, Civil Engineer.