

# DEED RECORD, No. 13

Peter O'Shea & wife  
to  
The Public

STATE OF NEBRASKA, Scotts Bluff County, ss.  
Entered on Numerical Index and filed for record  
the 25 day of April, 1921, at 2 o'clock P.M. and  
recorded in Book 13 of Deeds on Page 19.  
R. G. Neeley, Register of Deeds.

KNOW ALL MEN BY THESE PRESENTS:

That we, Peter O'Shea and Matilde O'Shea, husband and wife, owner and proprietor of the following described parcels of land within the corporate limits of the City of Scottsbluff, Scotts Bluff County, Nebraska, to-wit:

Beginning at a point sixty feet north of the northeast corner of Lot 24 of Main Street Addition to the City of Scottsbluff, and in line with the west line of Broadway street, thence running north in line with said street to a point in line with the south line of 20th street, thence west on the south line of said street one hundred forty feet, thence south in line with the east side of Block One of Third Addition to a point in line with the north line of 19th street, thence east along said north line to the place of beginning; and

Beginning at a point sixty feet north of the northwest corner of Lot One of Main Street Addition, and in line with the east side of Broadway street, thence running east one hundred and forty feet in line with the north side of 19th street, thence north to a point in line with the south line of 20th street, thence west in line with the south line of said street one hundred and forty feet, thence south in line with the east side of Broadway to the point of beginning.

in which said tracts there are no streets or alleys or public grounds, do hereby establish said tracts of land as Broadway Addition to the City of Scottsbluff, consisting of lots numbered 1 to 17 inclusive in Block One and lots numbered 1 to 17 inclusive in Block Two, in accordance with the plat hereto attached and the certificate of H. J. Woodman, Surveyor, accompanying said plat.

In witness whereof, we have hereunto set our hands this 12th day of April, 1921.

Peter O'Shea  
Matilde O'Shea

State of Nebraska, )  
Scotts Bluff County. ) ss.

On this 12th day of April, 1921, before me, the undersigned, a Notary Public within and for said county, personally came Peter O'Shea and Matilde O'Shea to me known to be the identical persons whose names are affixed to the foregoing instrument as grantors and acknowledged the same to be their voluntary act and deed.

Witness my hand and notarial seal the day and year last above written.

Geo. J. Downey, Notary Public.



### SURVEYOR'S CERTIFICATE

I hereby certify that on this first day of January, 1920 I surveyed and subdivided the two half block tracts lying on the east and west side of Broadway between Nineteenth Street and Twentieth Street in the City of Scottsbluff, Scotts Bluff County, Nebraska, as shown on the attached plat which is a correct delineation of said survey and subdivision drawn to a scale of one hundred feet to the inch. A review of said survey is as follows:

After diligent search for the original stakes that mark the tracts, only four were found - the northeast corner and the southwest corner of block number One, and the northeast corner, and the southeast corner of block number Two. The distance between the stakes in the northeast corner of block number Two and the northeast corner of Block No. 1, was two hundred forty (240) feet, which agrees with the plat of the tracts as shown on available maps of the city. The NW corner of block number one, was relocated by driving an iron pin one hundred feet east of the original stake marking the northeast corner of block Two,

# DEED RECORD, No. 13

and in line with the original stake marking the NE corner of block number One. The NW corner of block No. 2 was re-located on this same line by driving an iron pin one hundred forty feet west of the original stake marking the northeast corner of block number Two. The distance between the original stakes marking the southeast corner of block number Two and the southwest corner of block number One is One Hundred and One feet, the correct distance as shown on available maps of the city is one hundred feet (for this width of Broadway) To correct this error an iron pin was set in the southwest corner of Block number One one hundred feet east of the stake marking the southeast corner of Block number Two, on a line between original stakes found marking the southeast corner of block number Two and the Southwest corner of Block number One. The southeast corner of Block number One was re-located on this line by an iron pin set two hundred and forty feet east of the original stake marking the southeast corner of block number Two, and the southwest corner of Block number Two was re-located on this same line by an iron pin set one hundred and forty feet west of the original stake marking the southeast corner of block number Two. The lines of stakes marking the line corners were so run as to throw fractional lots on the north end of the blocks as shown by the plat. These lines of stakes line in very well with buildings to the south. The west line of stakes of Block number One come just at the east edge of the walk as now constructed. The original stake found in the southwest corner of block number One heretofore mentioned, while not used as a basis in staking out the tract except for line was not destroyed.

The width of street and dimensions of lots are indicated on the plat by feet and decimals. Each lot and block bears its own number. Iron pins, eighteen inches long, cut from half inch stock are driven just below the natural surface at all lot corners where no original stakes were found except as noted.

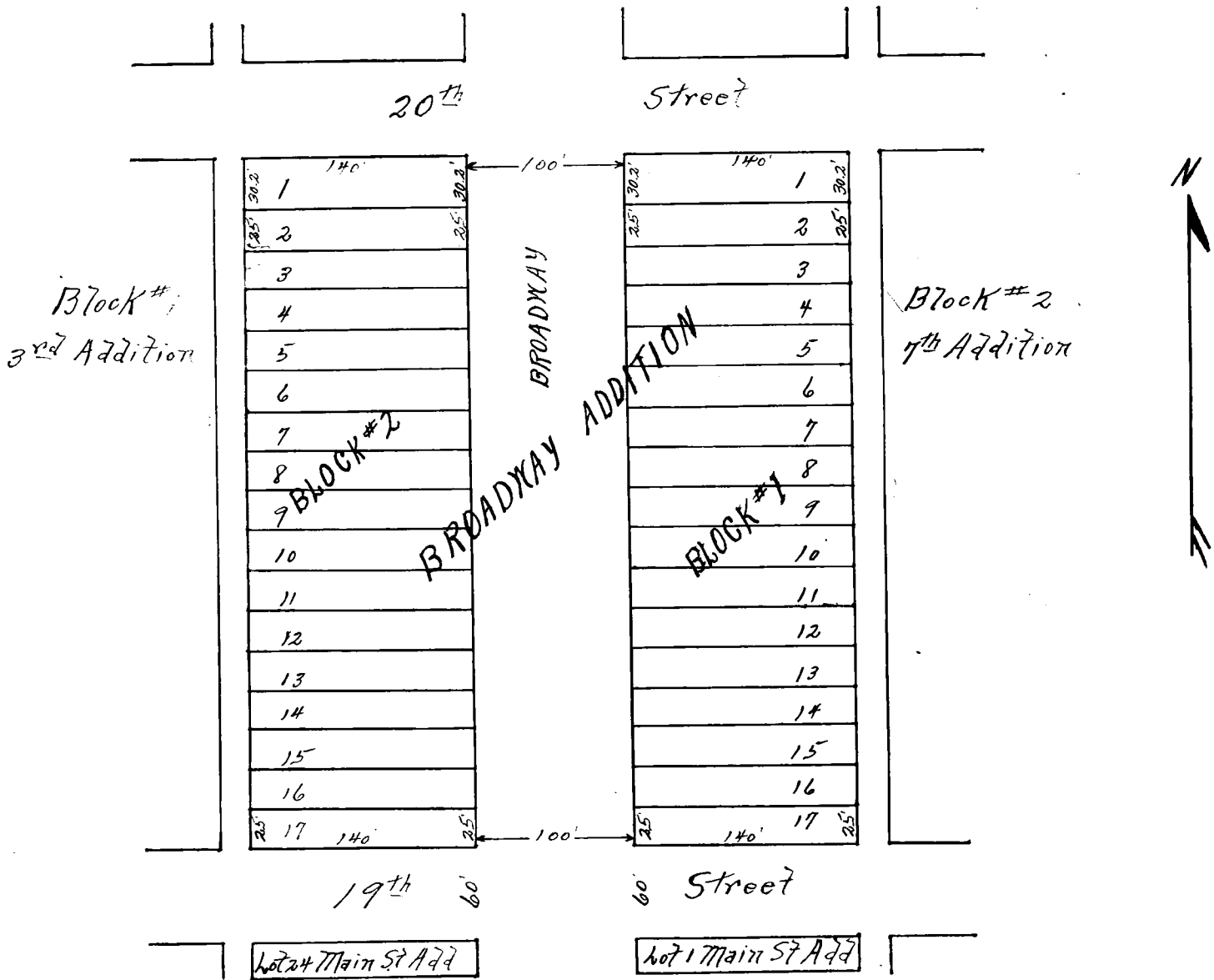
WITNESS my hand this first day of January, 1920.

H. J. Woodman  
Surveyor

The foregoing plat approved by the mayor and city council of the City of Scottsbluff, Nebraska, this \_\_\_\_ day of April, 1921.

T. D. Deutsch  
Mayor

Attest:  
J. W. Ely  
Clerk.



BROADWAY ADDITION  
to  
SCOTTSEBLUFF  
Scotts Bluff County Nebraska

Jan 1 1920

Scale 1" = 100'

H J Woodman  
Civil Eng'r