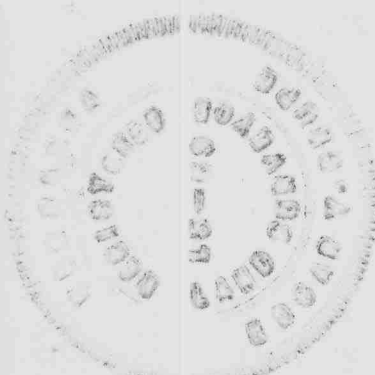
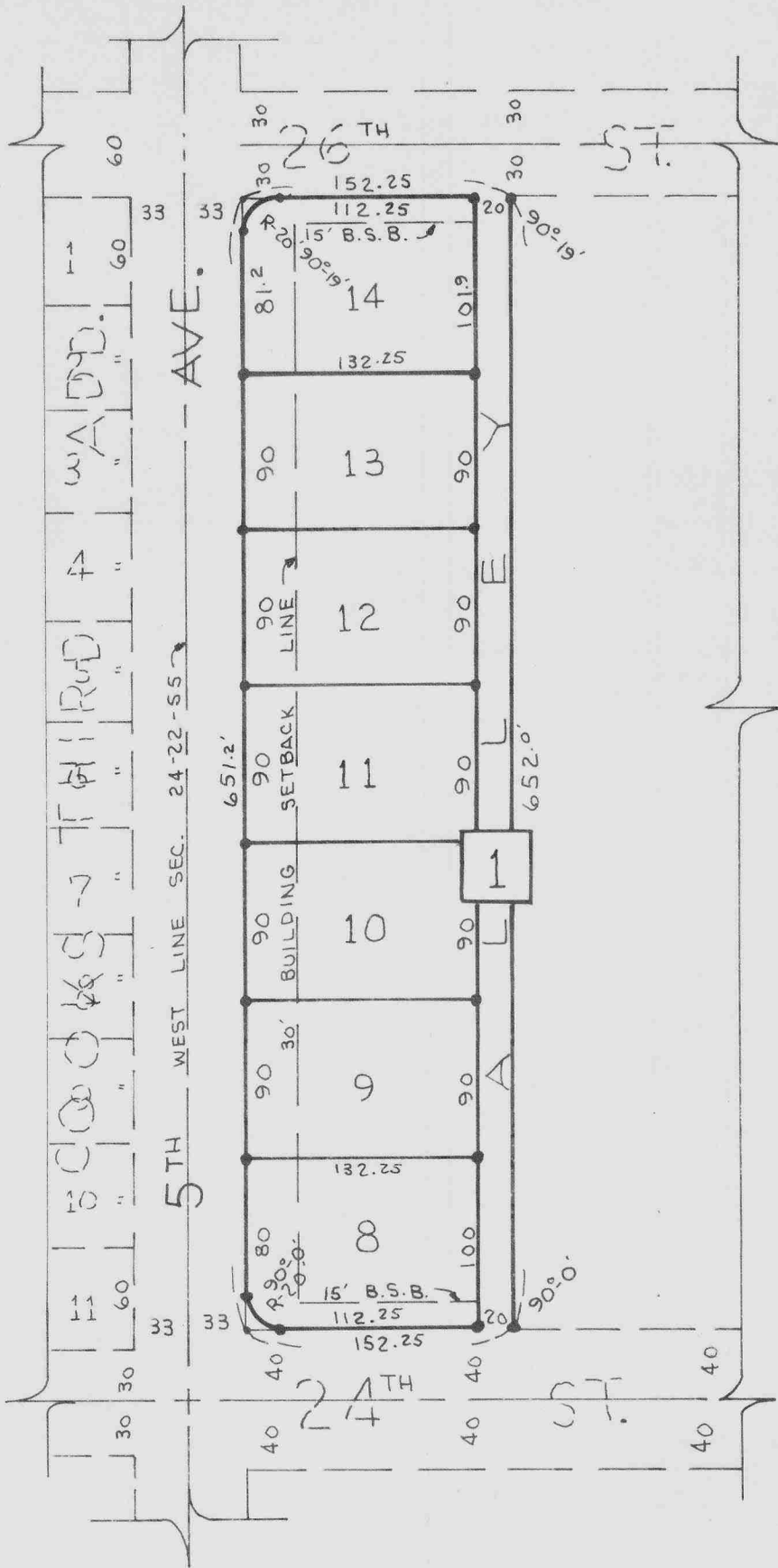


NORTHEAST THIRD ADDITION

1148

Lots 8 to 14 Inclusive, Block 1,
TO THE CITY OF SCOTTSBLUFF, NEBRASKA



EVG

1148

SURVEYOR'S CERTIFICATE

I, E.Y. GRUPE, a competent surveyor of Scotts Bluff County, Nebraska do hereby certify that a survey has been completed under my direction comprising that part of the Northwest Quarter (NW $\frac{1}{4}$) of Section Twenty-four (24), Township Twenty-Two (22) North Range Fifty-five (55) West of the Sixth Principal Meridian in Scotts Bluff County, Nebraska. That such land has been subdivided into Lots 8 to 14 inclusive, Block 1, NORTHEAST THIRD ADDITION to the City of Scottsbluff, Nebraska as shown on the accompanying plat. The boundary of the and wherein such subdivision is situated is more particularly described as follow;

Beginning at a point on the east line of 5TH Avenue and the south line of 26TH Street of the City of Scottsbluff, Nebraska, as previously platted and recorded; thence East on such South line of 26TH Street, a distance of 152.25 feet; thence South and parallel to the aforementioned east line of 5TH Avenue, a distance of 652.0 feet to the North line of 24TH Street of the City of Scottsbluff, Nebraska; thence West on the North line of such 24TH Street, a distance of 152.25 feet to the East line of 5TH Avenue; thence North on such East line of 5TH Avenue, a distance of 651.2 feet to the point of beginning, containing 2.27 acres more or less.

That the accompanying plat is a correct delineation of such survey drawn to a scale of 100 feet to one inch with all dimensions shown thereon in feet and decimals.

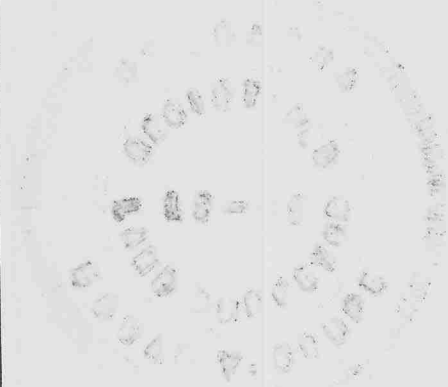
That the Block corners and boundaries of the Addition are marked with $\frac{5}{8}$ " x 36" Iron Rods. That all lot corners are marked with $\frac{5}{8}$ " Iron Rods.

That each lot and block bears it's own identifying number.

WITNESS MY HAND AND SEAL this 22 day of March 1969.

E. Y. Grupe

E.Y. GRUPE Scottsbluff, Nebraska
Nebraska Registered Land Surveyor
L.S. 69



DEDICATION

We, the undersigned being the owners of that part of the NW 1/4 Sec. 24 T22NR55W of the 6TH P.M., in Scotts Bluff County, Nebraska have caused such real estate to be surveyed and platted as Block 1, NORTHEAST THIRD ADDITION to the City of Scottsbluff, Nebraska, as shown by the accompanying plat and surveyors certificate.

The above described and foregoing subdivision of Block 1, NORTHEAST THIRD ADDITION showing Streets, Avenues, Alleys, and Building Set back lines designated upon and referred to in the said plat are hereby dedicated to the use and benefit of the public.

We hereby annex and make said real estate a part of the City of Scottsbluff, Nebraska.

DATED THIS 7TH DAY OF APRIL 1969.

William R Frank

William R. Frank, Trustee of the
Testamentary Trust created by the
Last Will and Testament of Owen A. Frank,
deceased

William R Frank

William R. Frank

Arthur J Abbott

Arthur J. Abbott

Patricia Frank Abbott

Patricia Frank Abbott