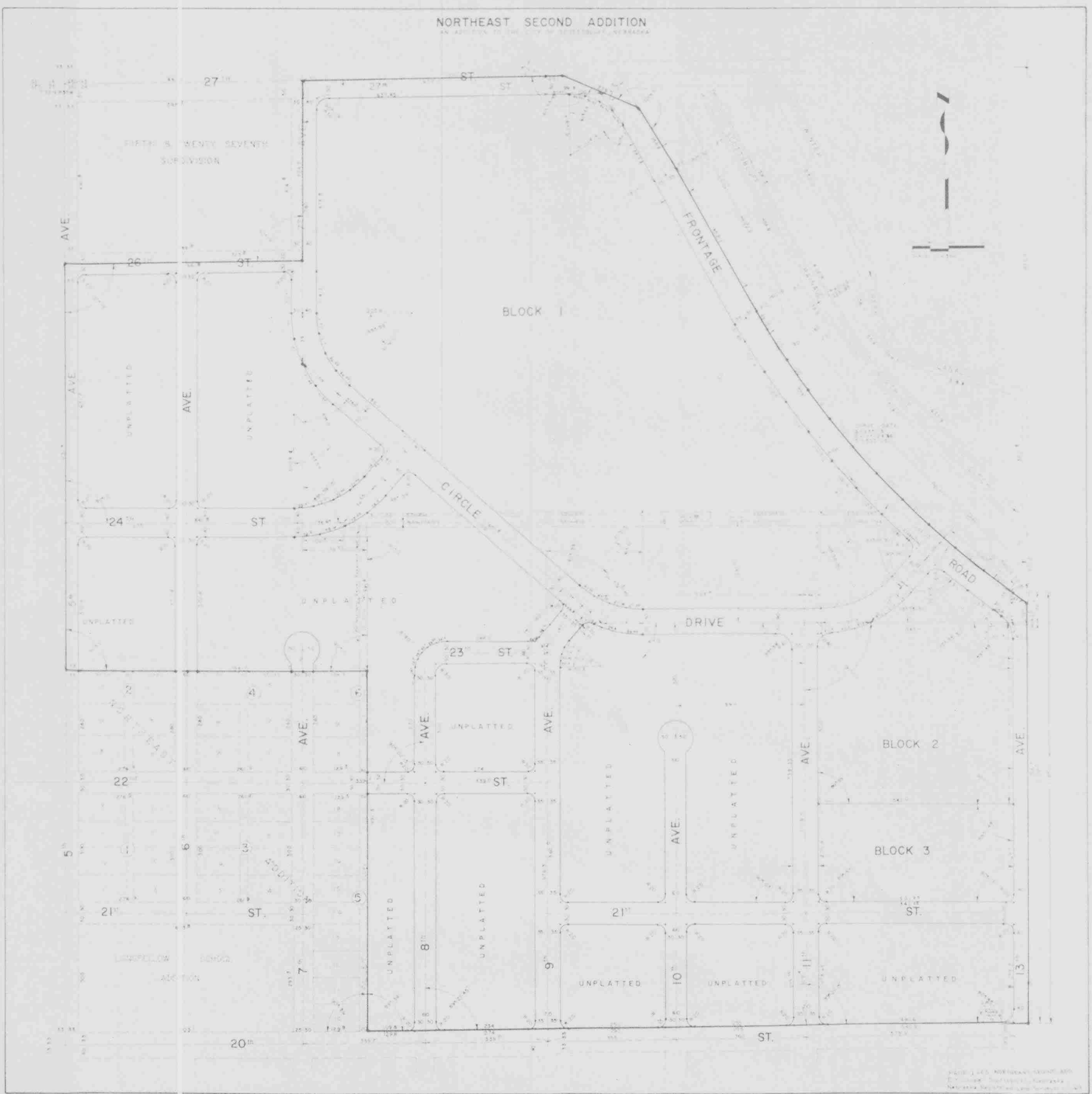


Note: See Ctf. + Ord. - Misc. 112-430 vacating lots 3A + 3B B1K1 + B1Ks 2+3  
Northeast Second Add. - subj to replat

Note: See Northeast Second Add. Replat 177-695

Note: See Deed Book 142 - page 558 for Subdivision of Block 1  
" " " 146 " 163 " " " " " " " " " " " "



3177

SURVEYOR'S CERTIFICATE

I, E. Y. Grupe, a competent surveyor in Scotts Bluff County, Nebraska do hereby certify that a survey has been completed under my direction comprising that part of the Northwest Quarter (NW $\frac{1}{4}$ ) of section Twenty-four (24) Township Twenty-two (22) North, Range Fifty-five (55) West of the Sixth Principal Meridian in Scotts Bluff County, Nebraska. That such land has been subdivided into Blocks 1, 2, and 3, NORTHEAST SECOND ADDITION to the City of Scottsbluff, Nebraska with Streets and Avenues platted adjoining thereto and extensions of existing streets platted through unplatted lands adjoining thereto, as shown on the accompanying plat. The boundary of the land wherein such subdivision lies and wherein the streets are platted crossing unplatted tracts is described as follows:

With reference to a point on the Northwest corner of such Section Twenty-four (24); thence East on the North line of such section a distance of 661.8 feet to the point of beginning, and the Northeast corner of FIFTH & TWENTY-SEVENTH SUBDIVISION, an addition to the City of Scottsbluff, Nebraska, according to the recorded plat thereof; thence angle right 90 degrees and 19 minutes, a distance of 496.8 feet on the East line of such subdivision to the south line of such subdivision; thence angle right 89 degrees and 41 minutes in a westerly direction on the South line of such subdivision a distance of 661.8 feet to the West line of aforementioned Northwest Quarter (NW $\frac{1}{4}$ ) Section Twenty-four (24); thence angle left 89 degrees and 41 minutes, a distance of 1131.6 feet on such West line to the Westerly extension of the North line of Lot 10, Block 2, NORTHEAST ADDITION; thence angle left 90 degrees and 0 minutes, a distance of 841.10 feet in an Easterly direction on the North line of such lot, extended East, to a point 20 feet east of the Northeast corner of Lot 10, Block 6, of such NORTHEAST ADDITION and the east line of the platted alley; thence angle right 90 degrees and 0 minutes in a southerly direction on the East line of such alley a distance of 991.3 feet to a point 33 feet North of the South line of such Northwest Quarter (NW $\frac{1}{4}$ ) of Section Twenty-four (24); thence angle left 90 degrees 26 minutes, a distance of 1829.4 feet in an easterly direction parallel to such South line to the East line of such Northwest Quarter (NW $\frac{1}{4}$ ); thence angle left 89 degrees 12 minutes a distance of 1,154.6 feet to the South line of the right-of-way of U.S. Highway No. 26; thence Northwesterly 54 degrees 24 minutes 30 seconds a distance of 63.5 feet to the point of curvature; thence continuing Northwesterly on a 2,381.83 foot radius curved to the right (initial tangent of which coincides with the last described course) a distance of 1,049.0 feet to the point of tangency; thence continuing Northwesterly, tangent, a distance of 454.8 feet to a point of curvature; thence continuing Northwesterly on a 2,201.83 foot radius curve to the left (initial tangent of which coincides with the last described course) a distance of 194.6 feet; thence continuing Northwesterly on a line which forms an angle of 40 degrees 51 minutes left from the final tangent of the last described curve a distance of 239.7 feet to a point on the North line of such aforementioned NORTHWEST QUARTER (NW $\frac{1}{4}$ ); thence angle left 18 degrees 06 $\frac{1}{2}$  minutes a distance of 720.1 feet in a Westerly direction on such North line to the point of beginning.

That the accompanying plat is a correct delineation of such survey drawn to a scale of 100 feet to one inch with all dimensions shown thereon in feet and decimals.

That all Block corners are marked with 5/8 x 36 inch Iron Rods.

That the intersection of all streets, lines, points of curvature and tangent lines are marked with 5/8 x 36 inch Iron Rods.

WITNESS MY HAND AND SEAL this 12<sup>th</sup> day of October 1968.

*E. Y. Grupe*  
E.Y. Grupe, Scottsbluff, Nebr.  
Nebraska Registered Land Surveyor  
L.S. 69



3177

DEDICATION

We, the undersigned being the owners of that part of the NW $\frac{1}{4}$  Sec. 24 T22N R55W of the 6th P.M., in Scotts Bluff County, Nebraska have caused such real estate to be surveyed and platted as Blocks 1, 2 and 3 NORTHEAST SECOND ADDITION to the City of Scottsbluff, Nebraska, as shown by the accompanying plat and surveyors certificate.

The above described and foregoing subdivision of Blocks 1, 2 and 3, NORTHEAST SECOND ADDITION showing Streets, Avenues and Building Set back lines designated upon and referred to in the said plat are hereby dedicated to the use and benefit of the public.

We hereby annex and make said real estate a part of the City of Scottsbluff, Nebraska with the exception of the following streets;

- 6th Avenue- from 24th Street South 370.4 feet
- 6th Avenue- from 24th Street to 26th St.
- 8th Avenue- All
- 9th Avenue- All
- 10th Avenue- All
- 21st Street- All
- 22nd Street- All
- 23rd Street- All

*William R Frank*

William R. Frank, Trustee of the  
Testamentary Trust created by the Last  
Will and Testament of Owen A. Frank, deceased

*William R Frank*

William R. Frank

*Arthur J. Abbott*

Arthur J. Abbott

*Patricia Frank Abbott*

Patricia Frank Abbott

Dated this 14th day of October, 1968



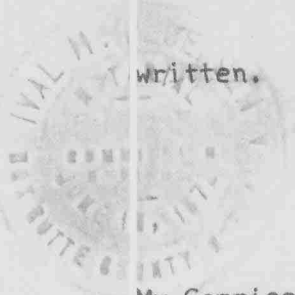
ACKNOWLEDGEMENT

STATE OF NEBRASKA)  
                                  ) SS  
BOX BUTTE COUNTY )

3177

On this 14 day of October 1968, before me, a Notary Public duly commissioned and Qualified for and residing in said County, personally came Patricia Frank Abbott and Arthur J. Abbott wife and husband by me known to be the identical persons whose names are affixed to the foregoing Dedication and acknowledged the same to be their voluntary acts and deeds.

WITNESS MY HAND AND NOTARIAL SEAL the day and year last above written.



*John W. Padgett*  
NOTARY PUBLIC

My Commission Expires: *June 16 1972*

ACKNOWLEDGEMENT

STATE OF NEBRASKA)  
                                  ) SS  
SCOTTSBLUFF COUNTY)

On this 14<sup>th</sup> day of October 1968, before me, a Notary Public duly commissioned and Qualified for and residing in said County, personally came William R. Frank; Trustee of The Testamentary Trust created by the Last Will and Testament of Owen A. Frank deceased, by me known to be the identical person whose name is affixed to the above dedication as Trustee and acknowledged the same to be his voluntary act and deed.

*Kenneth G. Roberts*  
NOTARY PUBLIC

My Commission Expires: *29 Febr. 69*



STATE OF NEBRASKA)  
                                  ) SS  
SCOTTSBLUFF COUNTY)

On this 14<sup>th</sup> day of October 1968, before me, a Notary Public duly commissioned and Qualified for and residing in said County, personally came William R. Frank; a single person, by me known to be the identical person whose name is affixed to the above dedication and acknowledged the same to be his voluntary act and deed.

*Kenneth G. Roberts*  
NOTARY PUBLIC

My Commission Expires: *29<sup>th</sup> Febr 69*



APPROVAL & ACCEPTANCE

The accompanying plat and dedication and annexation approved and accepted by the Mayor and City Council of the City of Scottsbluff, Nebraska by resolution duly passed this 14<sup>th</sup> day of October 1968.

B. G. Thomas  
MAYOR

ATTEST A. B. Ferguson  
City Clerk

