

✓ NUMERICAL  
✓ GENERAL  
TAX REG.  
PICTURED

3151

STATE OF NEBRASKA }  
SCOTTS BLUFF COUNTY } ss.

Entered on Numerical Index and filed for  
record the 8 day of November  
1968, at 1:25 o'clock P. M., and  
recorded in Book 128 of

Deeds

Records on Page 110

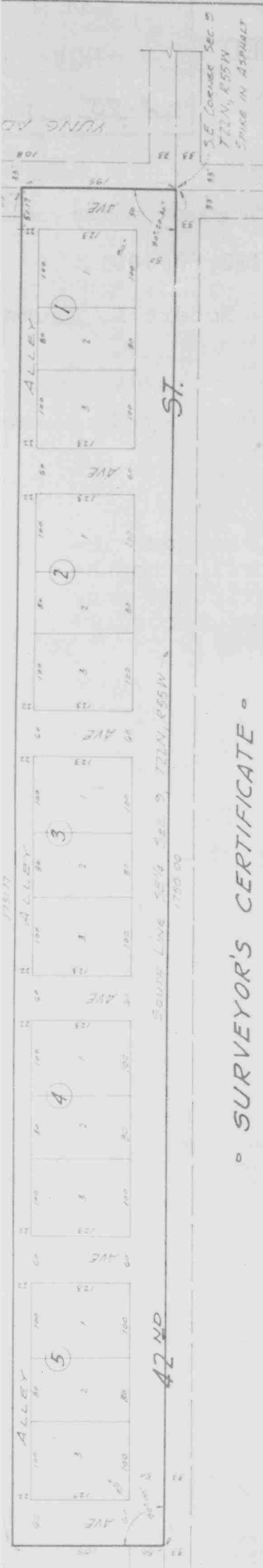
Mary Jo Ellis  
REGISTER OF DEEDS

By Janis M. Tomford Deputy

275  
pa

**KEN-DILL SUBDIVISION**  
**OF A PART OF THE 5 1/2 SE 1/4 OF SECTION 9**  
**T22N, R55W OF THE 6TH P.M., SCOTTS BLUFF**  
**COUNTY, NEBRASKA**

3151



° SURVEYOR'S CERTIFICATE °

I, **Kenneth George Roberts**, a competent surveyor of Scotts Bluff County, Nebraska do hereby certify that I have surveyed a part of the south half of the southeast quarter (50 SE 1/4) of Section Nine (9), Township Twenty-two (22) North, Range Forty-five (45) West of the Sixth P.M., Scotts Bluff County, Nebraska and located such land as Lots 12 and 13, Block 1; Lots 1 and 2, Block 2; Lots 1 and 2, Block 3; Lots 12 and 13, Block 4; Lots 1 and 2, Block 5, **KEN-DILL SUBDIVISION**.

The boundary of such subdivision is described as follows: Beginning at the southeast corner of such Section Nine (9), thence west on the south line of such south-half of the southeast quarter (5 1/2 SE 1/4) of Section Nine (9) a distance of 1750.00 feet, thence north and perpendicular to the south line of such south-half of the southeast quarter (5 1/2 SE 1/4) a distance of 195 feet, thence east and parallel to such south line of the south-half of the southeast quarter (5 1/2 SE 1/4) a distance of 1751.00 feet to the east line of such south-half of the southeast quarter (5 1/2 SE 1/4); thence south on such east line a distance of 125 feet to the point of beginning.

That the accompanying plat is a correct delineation of such survey drawn to a scale one inch equals 100 feet that each lot and block bears its own number that the corners of each lot and block is marked with a 3/8" iron rod that all dimensions are in feet and decimals.

WITNESS MY HAND AND SEAL THIS 27th DAY OF NOVEMBER, 1966.

*Kenneth George Roberts*  
 KENNETH GEORGE ROBERTS, SCOTTSBLUFF, NEBRASKA  
 NEBRASKA REGISTERED LAND SURVEYOR L.S. 33

° DEDICATION °

WE, THE UNDERSIGNED BEING THE OWNERS OF THAT PART OF THE SOUTH HALF OF THE SOUTH-EAST QUARTER (5 1/2 SE 1/4) OF SECTION NINE (9), TOWNSHIP TWENTY-TWO (22) NORTH, RANGE FIFTY-FIVE (55) WEST OF THE 6TH P.M., SCOTTS BLUFF COUNTY, NEBRASKA HAVE CAUSED SUCH REAL ESTATE TO BE SURVEYED AND PLATTED AS LOTS 12 AND 13, BLOCK 1; LOTS 1 AND 2, BLOCK 2; LOTS 1 AND 2, BLOCK 3; LOTS 12 AND 13, BLOCK 4; AND LOTS 1 AND 2, BLOCK 5, **KEN-DILL SUBDIVISION** IN SCOTTS BLUFF COUNTY, NEBRASKA AS SHOWN BY THE ACCOMPANYING PLAT AND SURVEYOR'S CERTIFICATE.

WE HEREBY DEDICATE THE SPEEDS, ALLEYS AND EASEMENTS DESIGNATED UPON AND REFERRED TO IN THE ACCOMPANYING PLAT TO THE USE AND BENEFIT OF THE PUBLIC.

*Elmer Dill*  
 Elmer Dill  
*Elmer Dill*  
 Elmer Dill

° ACKNOWLEDGEMENT °

STATE OF NEBRASKA )  
 SCOTTS BLUFF COUNTY )  
 Know all this 30th day of October, 1966, before me a Notary Public, duly commissioned, qualified and residing in said County personally came *Elmer Dill* and *Kenneth Roberts* and being by me known to be the identical persons whose names have been signed to the above dedication and acknowledging the same to be their voluntary act and deed.



U.S. HWY. NO. 26

407' 6"

DILL SUBDIVISION

42 ND

SOUTH LINE 5 1/2 SE 1/4 SEC. 9 T22N, R55W

ST.

SUNSIDESTREET

YUNG RD.

S.E. Corner Sec. 9  
 T22N, R55W  
 SPIKE IN ASPHALT

GRAPHIC SCALE  
 1" = 100'