

3499

SURVIVORSHIP WARRANTY DEED

Form 4.1

NUMERICAL
GENERAL
TAX REG.
PICTURED

3500

NUMERICAL
GENERAL
TAX REG.
PICTURED

STATE OF NEBRASKA, }
SCOTTS BLUFF COUNTY } ss.

Entered on Numerical Index and filed for
record the 14 day of December
1967, at 10:45 o'clock A.M., and
recorded in Book 125 of
deeds

Records on Page 300
Mary Jo Ellis
Register of Deeds
By James M. Sompard Deputy
350
pl.

STATE OF NEBRASKA,

County of Scotts Bluff:

Filed for record

December 14, 1967, at

10:31 A.M., and recorded
in Deed Record

125, page 299

Mary Jo Ellis
~~County Clerk~~ or
Register of Deeds.

James M. Sompard
Deputy

HAVE THIS DEED RECORDED

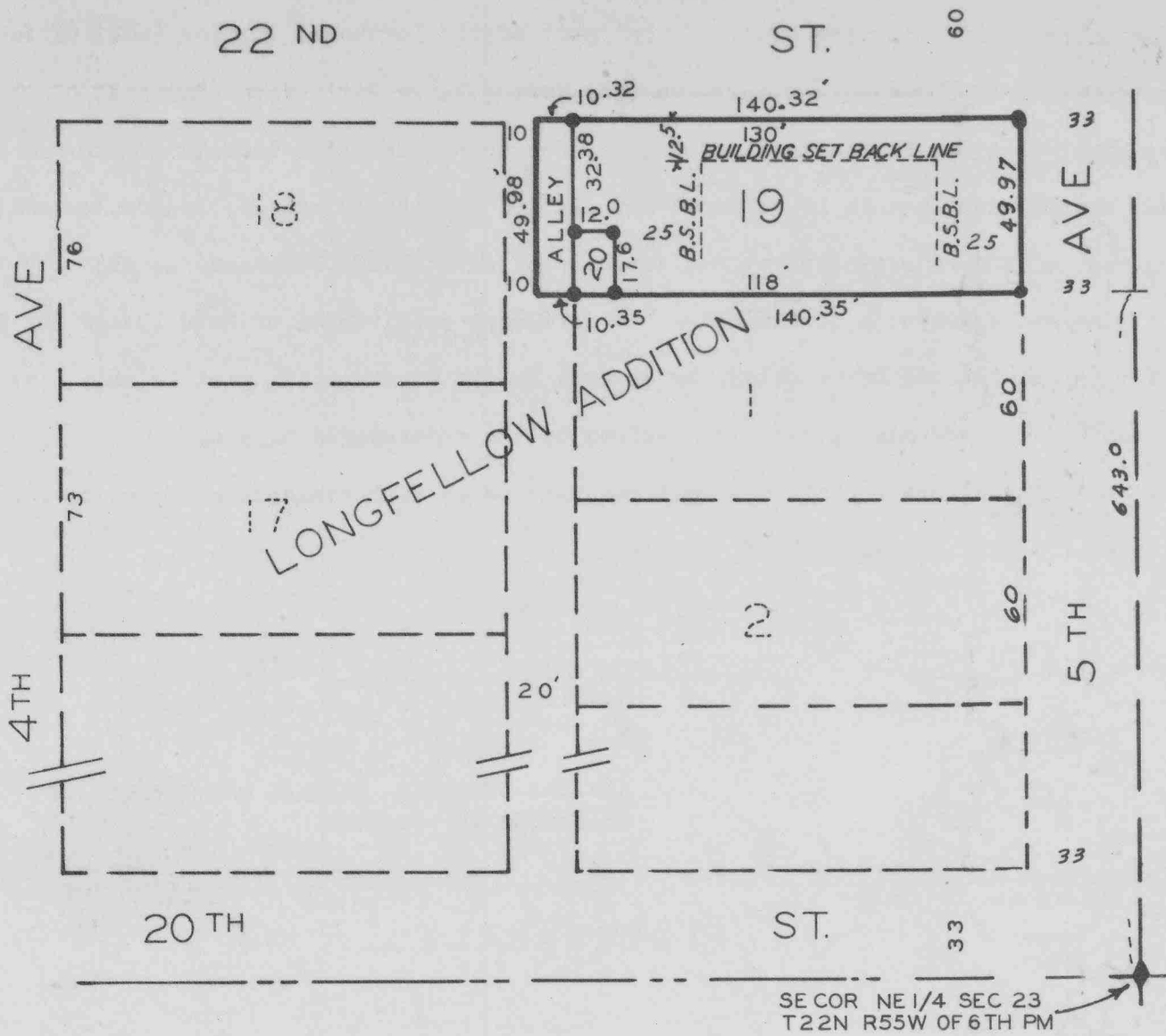
15
Wm. Winter - Guba
Felton & Wolf Co., Lincoln, Nebr.

3500

LONGFELLOW ADDITION

LOT'S 19 & 20

AN ADDITION IN THE CITY OF SCOTTSBLUFF, NEBRASKA.



SE COR NE 1/4 SEC 23
T 22N R 55W OF 6TH PM

SURVEYOR'S CERTIFICATE

I, E.Y. Grupe, a competent surveyor of Scotts Bluff County,

Nebraska, do hereby certify that I have surveyed a part of the Northeast Quarter (NE $\frac{1}{4}$) of Section Twenty-three (23), Township Twenty-two (22),

North, Range Fifty-five (55) West of the Sixth Principal Meridian in Scotts Bluff County, Nebraska, more particularly described as follows; Beginning at a point 643.0 feet North and 33 feet West of the Southeast Corner of such Northeast Quarter (NE $\frac{1}{4}$), such point being a common corner with the Northeast Corner of Lot One (1), Longfellow Addition to the City of Scottsbluff, Nebraska, according to the recorded plat thereof; thence West on the North line of such Lot One (1), extended West, a distance of 140.35 feet; thence North 49.98 feet; thence East and parallel to the aforementioned North line of Lot One (1), a distance of 140.32 feet; thence South 49.97 feet to the point of beginning.

That I have accurately platted such Lots Nineteen (19) and Twenty (20), Longfellow Addition.

That the accompanying plat is a correct delineation of such survey drawn to a scale of 50 feet to one inch and that all dimensions are shown in feet and decimals.

That each Lot bears its own number and are numbered Nineteen (19) and Twenty (20) respectively.

That the exterior corners of Lots 19 and 20 are marked with 5/8" X 36" iron rods and the interior corners are marked with 5/8" X 18" iron rods.

That the boundaries of the subdivision are shown on the accompanying plat in a heavy solid line.

WITNESS MY HAND AND SEAL

this 20th day of August 1908



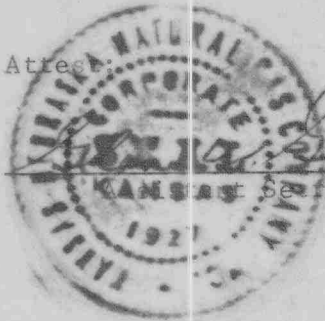
E. Y. Grupe

E. Y. GRUPE Scottsbluff, Nebraska
Nebraska Registered Land Surveyor L.S. 69

D E D I C A T I O N

The undersigned being the owner of that part of the Northeast Quarter (NE $\frac{1}{4}$) of Section Twenty-three (23), Township Twenty-two (22) North, Range Fifty-five (55) West of the Sixth Principal Meridian in Scotts Bluff County, Nebraska upon which Lots 19 and 20 are situated, have caused such land to be surveyed and platted as Lots 19 and 20, Longfellow Addition and part of the adjoining alley, in the City of Scottsbluff, Nebraska, as shown by the accompanying plat and surveyor's certificate. The foregoing subdivision of Lots 19 and 20, Longfellow Addition and the adjoining alley, as appears on the accompanying plat is made with the free consent and in accordance with the desires of the undersigned owners. The undersigned hereby plats and dedicates and makes such real estate a part of Longfellow Addition in the City of Scottsbluff, Nebraska.

Dated this 5th day of September 1967.



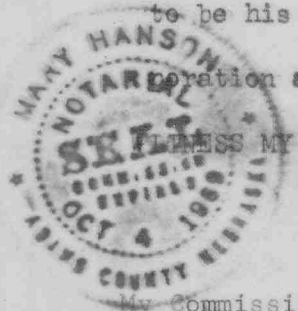
KANSAS-NEBRASKA- NATURAL GAS COMPANY, INC.
A Kansas Corporation

By Thos. Creigh, Jr.
Thos. Creigh, Jr., President

A C K N O W L E D G E M E N T

STATE OF NEBRASKA)
COUNTY OF ADAMS) ss:

Before me, a Notary Public, qualified in said County personally came Thos. Creigh, Jr. President of Kansas Nebraska Natural Gas Company, Inc. a Kansas Corporation, known to me to be the President and identical person who signed the foregoing dedication and acknowledged the execution thereof to be his voluntary act and deed as such officer and the voluntary act and deed of the corporation and that it's corporate seal was thereto affixed by it's authority.



WITNESS MY HAND AND SEAL this 5th day of September 1967.

Mary Hanson
NOTARY PUBLIC

My Commission Expires:
Oct. 4 1969

A P P R O V A L & A C C E P T A N C E

accompanying Plat and Dedication approved and accepted by the Mayor and City Council of the City of Scottsbluff, Nebraska by resolution duly passed this 11th day of December



W. L. Ferguson
City Clerk W. L. Ferguson

W. G. Thomas
MAYOR