

1944

NUMERICAL  
 GENERAL  
TAX REG.  
PICTURED

STATE OF NEBRASKA } ss.  
SCOTTS BLUFF COUNTY }

Entered on Numerical Index and filed for  
record the 12 day of July  
1967, at 10:00 o'clock A. M., and  
recorded in Book 124 of

Deed  
Records on Page 44  
Mary Jo Ellis  
Register of Deeds  
By Spd William H. Larsson Deputy

1929

NUMERICAL  
 GENERAL  
TAX REG.  
PICTURED

STATE OF NEBRASKA, } SS  
SCOTTS BLUFF COUNTY }

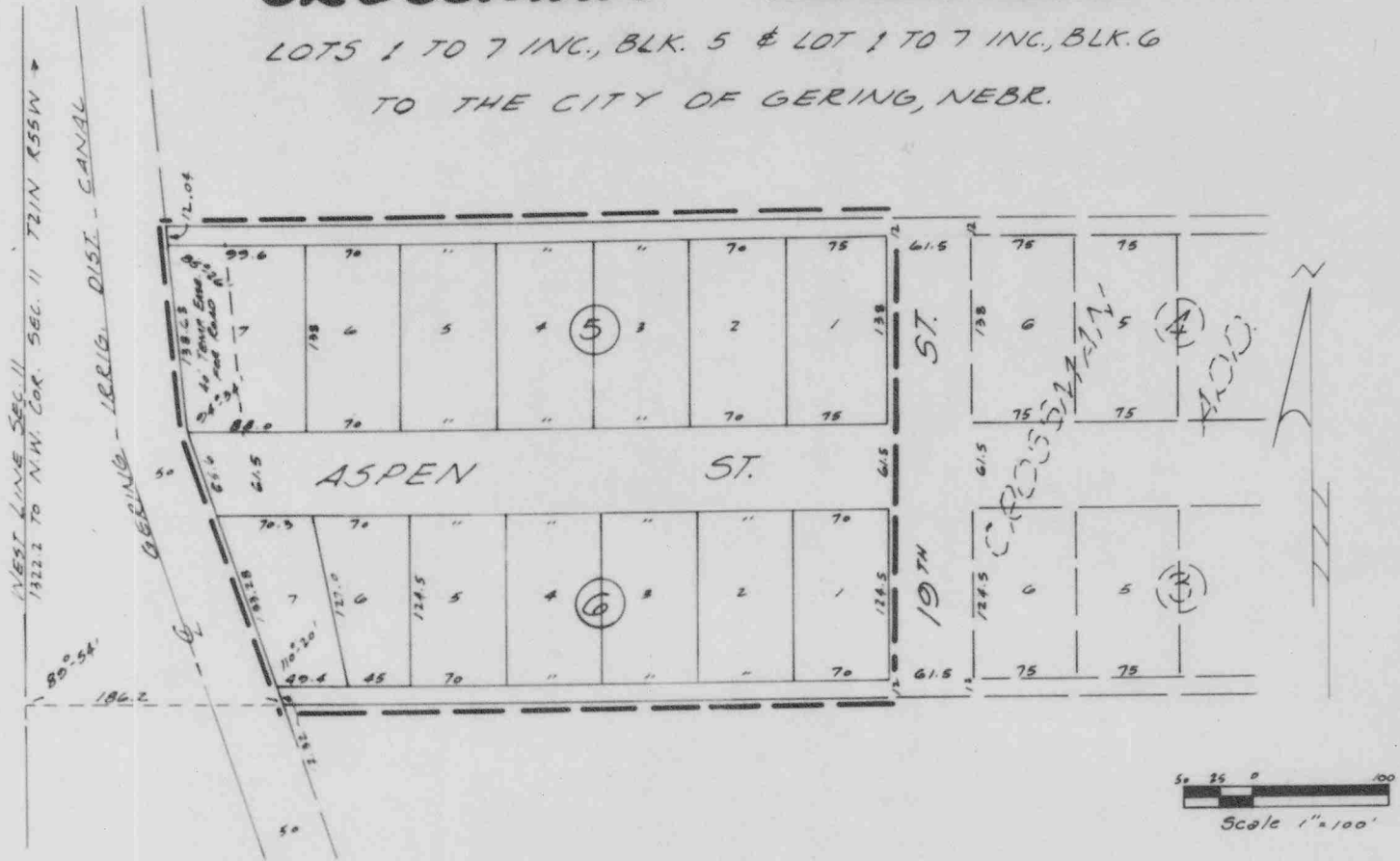
Entered on Numerical Index and filed for record  
the 11 day of July, 1967 at 3:00  
o'clock P. M., and recorded in Book 124 of  
Deed on Page 42  
Mary Jo Ellis  
REGISTER OF DEEDS  
By Jarvis M. Craig Deputy

copy sent.  
Scotts Bluff Co Abstract

# CROSSMAN ADDITION

1944

LOTS 1 TO 7 INC., BLK. 5 & LOT 1 TO 7 INC., BLK. 6  
TO THE CITY OF GERING, NEBR.



### SURVEYOR'S CERTIFICATE

I, John F. Langley, a competent surveyor of Scotts Bluff County, Nebraska, hereby certify that I have surveyed Crossman Addition, Blocks 5 and 6, to the City of Gering, Nebraska, situated on part of the North Half of the Northwest Quarter (N<sup>1</sup>/<sub>2</sub>NW<sup>1</sup>/<sub>4</sub>) of Section Eleven (11), Township Twenty-one (21) North, Range Fifty-five (55) West of the 6<sup>th</sup> P.M., Scotts Bluff County, Nebraska and more particularly described as follows: Commencing at the Southwest corner of the N<sup>1</sup>/<sub>2</sub>NW<sup>1</sup>/<sub>4</sub>; thence east on the South Line of said N<sup>1</sup>/<sub>2</sub>NW<sup>1</sup>/<sub>4</sub> a distance of 186.2 feet to the point of beginning; thence angle left 110°-20' a distance of 211.2 feet; thence angle right 15°-46' a distance of 150.72 feet; thence angle right 94°-34' a distance of 524.6 feet to the West Line of 19<sup>th</sup> Street; thence south on the West Line of 19<sup>th</sup> Street a distance of 348.0 feet to the South Line of said N<sup>1</sup>/<sub>2</sub>NW<sup>1</sup>/<sub>4</sub>; thence west on said South Line a distance of 444.4 feet to the point of beginning, containing 3.95 acres. That the above plat is a true delineation of said survey drawn to a scale of 100 feet to the inch. That iron pins are driven well into the ground at all corners as shown. All dimensions are in feet and decimals.

WITNESS MY HAND AND SEAL this 8<sup>th</sup> day of July, 1967.

*J. F. Langley*  
 J. F. Langley, Nebr., Reg. L.S. 160

### DEDICATION

We, the undersigned, being the owners of that part of the N<sup>1</sup>/<sub>2</sub>NW<sup>1</sup>/<sub>4</sub> of Section 11, Township 21 North, Range 55 West of the 6<sup>th</sup> P.M., Scotts Bluff County, Nebraska, have caused said land to be surveyed and platted as Crossman Addition, Blocks 5 and 6, to the City of Gering, Nebraska, as shown on the above plat and Surveyor's Certificate. We hereby dedicate the Streets and Alleys as shown on said plat to the use and benefit of the public and we hereby annex and make said real estate, as shown, a part of the City of Gering, Scotts Bluff County, Nebraska, to be known as Crossman Addition. The above subdivision of Crossman Addition is made with the free consent and in accordance with the desires of the undersigned owners.

Dated this 7<sup>th</sup> day of July, 1967.

*S.E. Crossman*  
 S.E. Crossman

*William H. Crossman*  
 William H. Crossman

### ACKNOWLEDGEMENT

STATE OF NEBRASKA )  
 SCOTTS BLUFF COUNTY ) ss

On this 7<sup>th</sup> day of July 1967, before me a Notary Public, duly commissioned in and for said County, personally came S.E. Crossman and William H. Crossman, to be the identical persons whose names are affixed to the foregoing plat and Dedication and acknowledged the same to be their voluntary act and deed.

WITNESS MY HAND AND NOTARIAL SEAL the day and year last above written.  
 My commission expires the 7<sup>th</sup> day of April, 1969.

*C. W. Lyman*  
 Notary Public

### ACCEPTANCE

The above plat approved and accepted by the Mayor and City Council of the City of Gering, Nebraska, by resolution duly passed on this 7<sup>th</sup> day of July, 1967.

*W. Richard Parks*  
 Mayor

ATTEST: *Clarence M. Larsen*  
 City Clerk