

**DILL SUBDIVISION**  
**OF A PART OF THE S<sup>1</sup>/<sub>2</sub> S<sup>1</sup>/<sub>2</sub> SECTION**  
**9, T22N, R55W OF THE 6th P.M., SCOTTSBLUFF CO.,**  
**NEBRASKA**

**SURVEYOR'S CERTIFICATE**

I, Kenneth George Roberts, a competent surveyor of Scotts Bluff County, Nebraska do hereby certify that I have surveyed a part of the South-half (S<sup>1</sup>/<sub>2</sub>) of Section Nine (9), Township Twenty-two (22) North, Range Fifty-five (55) West of the 6th Principal Meridian, Scotts Bluff County, Nebraska and platted such land as Tracts 1, 2, 3, 4, 5 and 6, DILL SUBDIVISION.

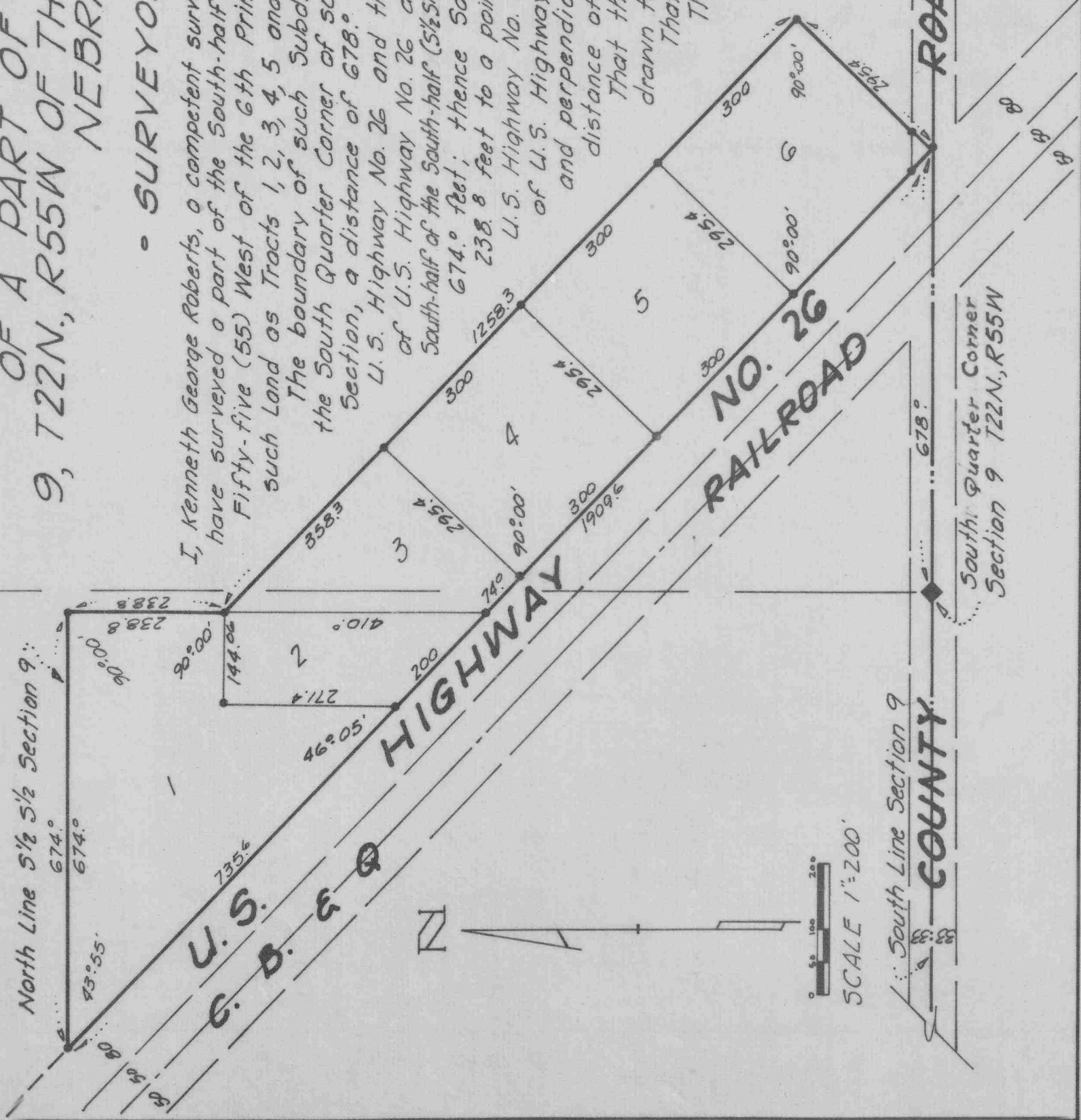
The boundary of such Subdivision is described as follows: with reference to a point on the South Quarter Corner of such Section Nine (9); thence East on the South Line of such Section, a distance of 678.° feet to intersect the Northeastly right of way line of U.S. Highway No. 26 and the point of beginning; thence Northwesterly on such line of U.S. Highway No. 26 a distance of 1909.6 feet to intersect the North Line of the South-half of the South-half (S<sup>1</sup>/<sub>2</sub>) Section 9; thence East on such North Line a distance of 674.° feet; thence South and perpendicular to such North Line a distance of 238.8 feet to a point 295.4 feet from the Northeast right of way line of such U.S. Highway No. 26; thence Southeasterly and parallel to such Northeastly line of U.S. Highway No. 26 a distance of 1258.3 feet; thence Southwesterly and perpendicular to such Northeastly line and perpendicular to such Northeast line of U.S. Highway No. 26, a distance of 295.4 feet to the point of beginning.

That the accompanying plat is a correct delineation of such survey drawn to a scale of one inch to 200 feet.  
 That each tract bears its own number.  
 That the corner of each Tract is marked with a 5/8" iron rod.  
 That all dimensions are in feet and decimals.

WITNESS MY HAND AND SEAL this 7th day of August, 1966.

*Kenneth George Roberts*

Kenneth George Roberts, Scottsbluff, Nebr.  
 Nebraska Registered Land Surveyor L.S. 33





• DEDICATION •

2680

We, the undersigned, being the owners of that part of the South-half (S½) of Section Nine (9), Township Twenty-two (22) North, Range Fifty-five (55) West of the 6th P.M. in Scotts Bluff County, Nebraska have caused such real estate to be surveyed and plotted as Tracts 1, 2, 3, 4, 5 and 6, DILL SUBDIVISION in Scotts Bluff County, Nebraska as shown by the accompanying plat and surveyor's certificate.

The foregoing subdivision of real estate and the Streets, Avenues, Alleys and Easements as appear on the accompanying plat is made with the free consent and in accordance with the desires of the undersigned owners.

We hereby dedicate the the Streets, Avenues, Alleys and Easements designated upon and referred to in the accompanying plat to the use and benefit of the public.

Kenneth Dill

Kenneth Dill

Elinor Dill

Elinor Dill

Wayne E. Swank

Wayne E. Swank

Olivia Swank

Olivia Swank

Arnold T. Elsea

Arnold T. Elsea

Wanda L. Elsea

Wanda Elsea

• ACKNOWLEDGEMENT •

STATE OF NEBRASKA )  
SCOTTS BLUFF COUNTY )

Now on this 12th day of September, 1966, before me a Notary Public, duly commissioned, qualified and residing in such County personally came Kenneth Dill and Elinor Dill, husband and wife; Wayne E. Swank and Olivia Swank, husband and wife; Arnold T. Elsea and Wanda Elsea, husband and wife by me known to be the identical persons whose names are affixed to the above dedication and acknowledge the same to be their voluntary acts and deeds.

MY HAND AND SEAL this 12th day of September, 1966.

My Commission expires: October 19, 1971

G. Hall  
Notary Public