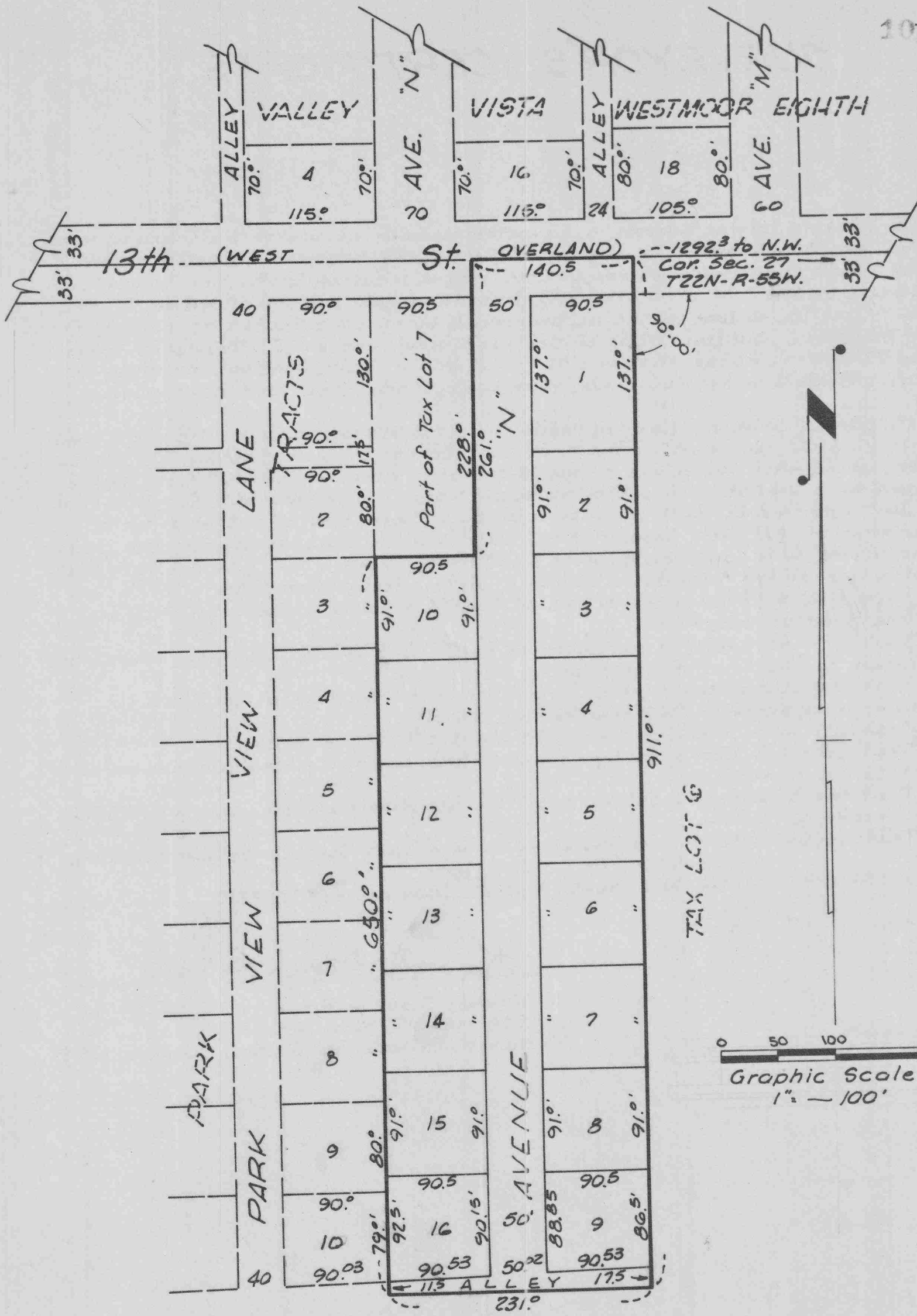


# BLUFFS VIEW TRACTS

AN ADDITION TO THE CITY OF SCOTTSBLUFF, NEBR.

1017



# SURVEYOR'S CERTIFICATE

1017

I, Kenneth George Roberts, a competent surveyor of Scotts Bluff County, Nebraska, and City Engineer for the City of Scottsbluff, Nebraska do hereby certify that I have completed a survey of Lots 1 to 16 inclusive, Bluffs View Tracts, an Addition to the City of Scottsbluff, Nebraska and a part of Avenue "N" and 13th Street as shown on the accompanying plat; all situated on a part of the Northeast Quarter (NE<sup>1</sup>/<sub>4</sub>) of Section Twenty-seven (27) Township Twenty-two (22) North, Range Fifty-five (55) West of the Sixth Principal Meridian in Scotts Bluff County, Nebraska, more particularly described as follows:

Beginning at a point on the North <sup>line</sup> line of the NE<sup>1</sup>/<sub>4</sub> of such Section 27, which point is 1292.<sup>3</sup> feet west of the Northeast Corner of such Section 27; thence West, along such North line of the NE<sup>1</sup>/<sub>4</sub> for a distance of 140.<sup>5</sup> feet; thence South, on a line at right angles to such North line of the NE<sup>1</sup>/<sub>4</sub> for a distance of 261.<sup>0</sup> feet; thence West parallel with such North line of the NE<sup>1</sup>/<sub>4</sub> for a distance of 90.<sup>5</sup> feet; thence South, on a line at right angles to such North line of the NE<sup>1</sup>/<sub>4</sub> for a distance of 650.<sup>0</sup> feet; thence East, parallel with such North line of the NE<sup>1</sup>/<sub>4</sub> for a distance of 231.<sup>0</sup> feet; thence North, on a line at right angles to such North line of the NE<sup>1</sup>/<sub>4</sub> for a distance of 911.<sup>0</sup> feet to the point of beginning.

That I have surveyed and platted such land as Bluffs View Tracts, an Addition to the City of Scottsbluff, Nebraska.

That the accompanying plat is a correct delineation of such survey drawn to a scale of 100 feet to one inch.

That all lot corners are marked with 5/8" x 36" iron rods.

That each lot bears its own number and all dimensions are shown in feet and decimals.

That the boundaries of the addition are shown on the plat in a continuous heavy solid line.

That adjoining lands are shown in broken lines for orientation purposes.

WITNESS MY HAND AND SEAL this 5<sup>th</sup> day of December, 1965



Kenneth George Roberts  
 Kenneth George Roberts  
 Scottsbluff, Nebraska  
 Nebraska Registered Land Surveyor L.S.33



Bluffs View Tracts - continuation sheet No. 2

1012

**DEDICATION AND ANNEXATION**

We, the undersigned, being the owners of that part of the Northeast Quarter (NE $\frac{1}{4}$ ) of Section Twenty-seven (27), Township Twenty-two (22) North, Range Fifty-five (55) West of the Sixth Principal Meridian, in Scotts Bluff, Nebraska have caused such real estate to be surveyed and platted as BLUFFS VIEW TRACTS an addition to the CITY OF SCOTTS-BLUFF, NEBRASKA as shown by the accompanying plat and surveyor's certificate.

The foregoing subdivision of real estate and the Streets, Avenues, Alleys and Easements as appear on such plat is made with the free consent and in accordance with the desires of the undersigned owners.

We, hereby dedicate the Streets and Avenues, Alleys and Easements designated upon and referred to in the accompanying plat to the use and benefit of the public and further annex and make such real estate a part of the City of Scottsbluff, Nebraska.

Dated this 31st day of January, 1966.

Eugene C. Lane  
Eugene C. Lane

Jerene J. Lane  
Jerene J. Lane

William Dale Osborn  
William Dale Osborn.

Anita Gisela Osborn  
Anita Gisela Osborn

R. M. Townsend  
R. M. Townsend

M. E. Townsend  
M. E. Townsend

Eugene M. Gillam  
Eugene M. Gillam

Delma J. Gillam  
Delma J. Gillam

Leonard J. Kaufman  
Leonard J. Kaufman

Billie J. Kaufman  
Billie J. Kaufman

Bluffs View Tracts - continuation sheet No. 3

**ACKNOWLEDGEMENT**

1017

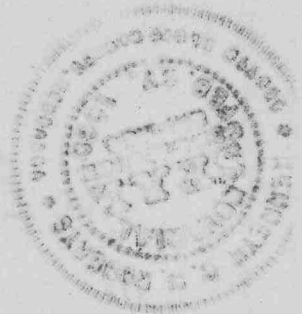
STATE OF NEBRASKA )  
SCOTTS BLUFF COUNTY ) SS

On this 31<sup>st</sup> day of January, 1966, before me a Notary Public in and for said County personally came Eugene C. Lane and Jerene J. Lane, husband and wife; William Dale Osborne and Anita Gisela Osborne, husband and wife; R. M. Townsend and M. E. Townsend, husband and wife; Eugene M. Gillam and Delma J. Gillam, husband and wife; Leonard J. Kaufman and Billie J. Kaufman, husband and wife, to me known to be the identical persons whose names are affixed to the foregoing annexation and dedication and acknowledged the same to be their voluntary acts and deeds.

WITNESS MY HAND AND NOTARIAL SEAL the day and year last above written.

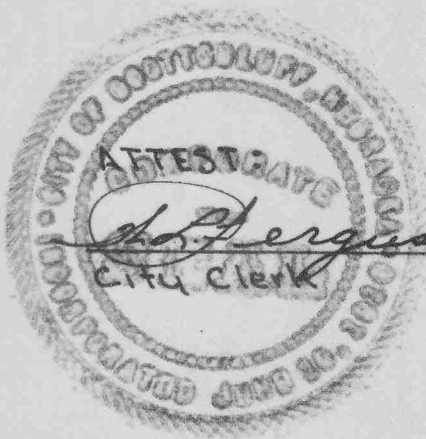
Kenneth G. Roberto  
Notary Public

My commission expires February 27, 1969

**ACCEPTANCE**

The foregoing plat of Bluffs View Tracts approved and accepted by the Mayor and City Council of the City of Scottsbluff, Nebraska by Resolution duly passed this 28<sup>th</sup> day of March, 1966.

E. G. Thomas  
Mayor



D. J. Ferguson  
City Clerk