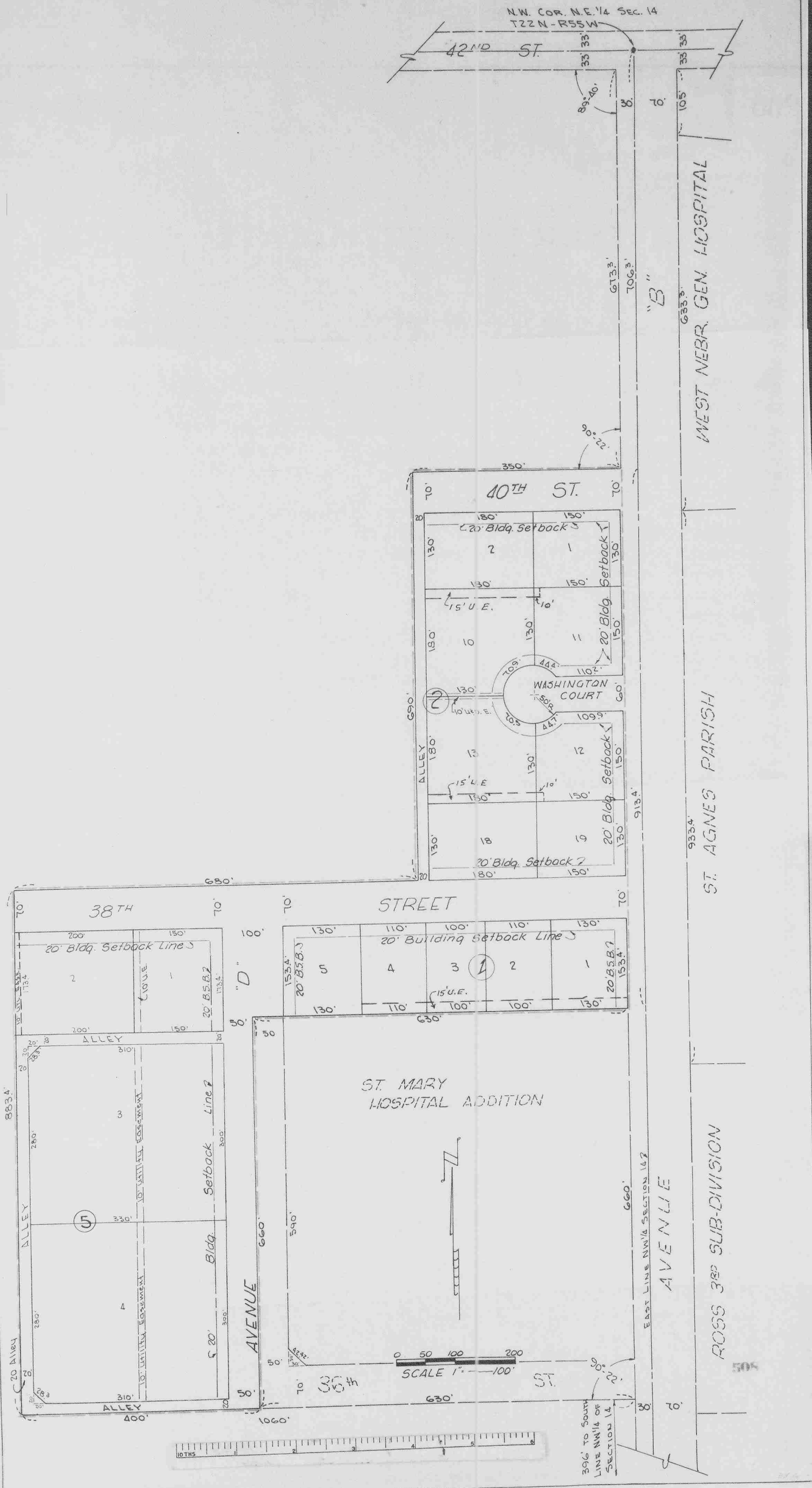


GEORGE BALTES ADDITION TO THE CITY OF SCOTTSBLUFF SCOTTS BLUFF COUNTY, NEBRASKA

Lots 1, 2, 3, 4, 5 Block 1
Lots 1, 2, 10, 11, 12, 13, 18, 19 Block 2
Lots 1, 2, 3, 4, Block 5



Note: now plat
as Lots A, B, C, D,
Berggren-Kle
Subdivision +
replat Lots 1, 2, 3,
Block 5
Deed Book
113-388

Note: now plat
as Subdivision
of Lot 4 Block 5.
Deed Book 155-

• SURVEYOR'S CERTIFICATE • 508

I, E.Y. Grupe, a competent surveyor of Scotts Bluff County, Nebraska, do hereby certify that on the 1st day of December 1965, I completed a survey of Lots 1, 2, 3, 4, and 5, Block 1; Lots 1, 2, 10, 11, 12, 13, 18, and 19, Block 2; and Lots 1, 2, 3, 4, Block 5, George Baltes Addition to the City of Scottsbluff, Nebraska, and parts of alleys, streets and ways as shown by the accompanying Plat; all situated on a part of the Northwest Quarter (NW $\frac{1}{4}$), Section 14, Township 22 North, Range 55 West of the 6th P.M., in Scotts Bluff County, Nebraska, more particularly described as follows:

Beginning at a point 30 feet West on the North line and 706.3 feet South on a line parallel to the East line of such Northeast Corner of the Northwest Quarter (NW $\frac{1}{4}$), Section 14, Township 22 North, Range 55 West of the 6th P.M.

Thence West on a line parallel to the South line of said Northwest Quarter (NW $\frac{1}{4}$), 350.0 feet;

Thence South on a line parallel to the East line of said Northwest Quarter (NW $\frac{1}{4}$), 690.0 feet;

Thence West on a line parallel to the South line of said Northwest Quarter (NW $\frac{1}{4}$), 680.0 feet;

Thence South on a line parallel to the East line of said Northwest Quarter (NW $\frac{1}{4}$), 883.4 feet to a point 396.0 feet North and 1060.0 feet West of the Southeast corner of said Northwest Quarter (NW $\frac{1}{4}$), Section 14;

Thence East on a line parallel to the South line of said Northwest Quarter (NW $\frac{1}{4}$), 400.0 feet;

Thence North on a line parallel to the East line of said Northwest Quarter (NW $\frac{1}{4}$), 660.0 feet;

Thence East and on a line parallel to the South line of said Northwest Quarter (NW $\frac{1}{4}$), 630.0 feet;

Thence North and on a line parallel to the East line of said Northwest Quarter (NW $\frac{1}{4}$) to the point of beginning; containing 15.8 acres.

That the accompanying Plat is a correct delineation of such survey drawn to a scale of 100 feet to one inch.

That all dimensions are shown in feet and decimals.

That all Block corners are marked with 5/8" x 36" iron rods and all other lot corners are marked with 5/8" x 18" iron rods.

WITNESS MY HAND AND SEAL this 1st day of December, 1965.

E. Y. Grupe

E.Y. Grupe Scottsbluff, Nebraska
Nebraska Registered Land Surveyor L.S. 69

SEAL

• DEDICATION •

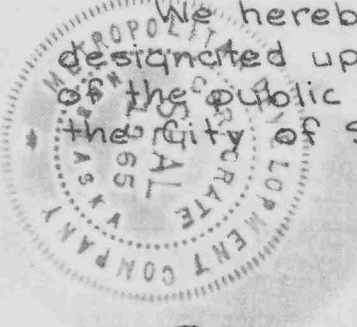
508

We, the undersigned being the owners of that part of the Northwest Quarter (NW 1/4), Section 14, Township 22 North, Range 55 West of the 6th P.M., in Scotts Bluff County, Nebraska, have caused such real estate to be surveyed and platted as Lots 1, 2, 3, 4, and 5, Block 1; Lots 1, 2, 10, 11, 12, 13, 18, and 19, Block 2; and Lots 1, 2, 3, 4, Block 5, George Baltes Addition to the City of Scottsbluff, Scotts Bluff County, Nebraska, as shown by the accompanying Plat and Surveyor's Certificate.

The above described and foregoing George Baltes Addition and the Easements, Streets, Avenues, and Alleys as appears on this Plat is made with the free consent and in accordance with the desire of the undersigned owners.

We hereby dedicate the Streets, Avenues, Alleys and Easements designated upon and referred to in the said Plat to the use and benefit of the public and further annex and make said real estate a part of the City of Scottsbluff, Nebraska.

Dated this 17th day of January, 1966.



METROPOLITAN DEVELOPMENT COMPANY

Bernhard Kleven
Bernard Kleven, President

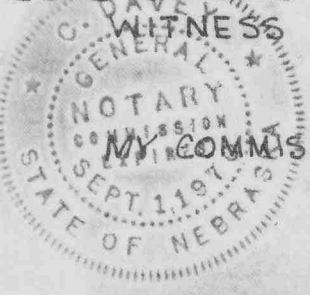
Robert Berggren
Robert Berggren Secretary

• ACKNOWLEDGEMENT •

STATE OF NEBRASKA)
SCOTTS BLUFF COUNTY) ss

Before me a Notary Public qualified and acting in said County, personally came Bernhard Kleven, President of Metropolitan Development Company, known to me to be the President and identical person who signed the foregoing instrument as such officer and voluntary act and deed of said Company.

WITNESS MY HAND AND NOTARIAL SEAL this 17th day of Jan., 1966.



MY COMMISSION EXPIRES: Sept 1 - 1970

O. Davey
NOTARY PUBLIC

• APPROVAL •

The accompanying Plat and Dedication approved and accepted by the Mayor and City Council of the City of Scottsbluff, Nebraska, by resolution duly passed this 14th day of February, 1966.



L. P. Ferguson
CITY CLERK

E. A. Thomas
MAYOR