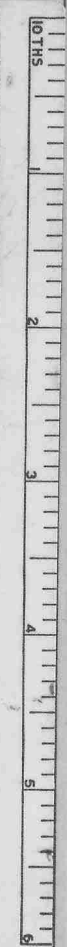
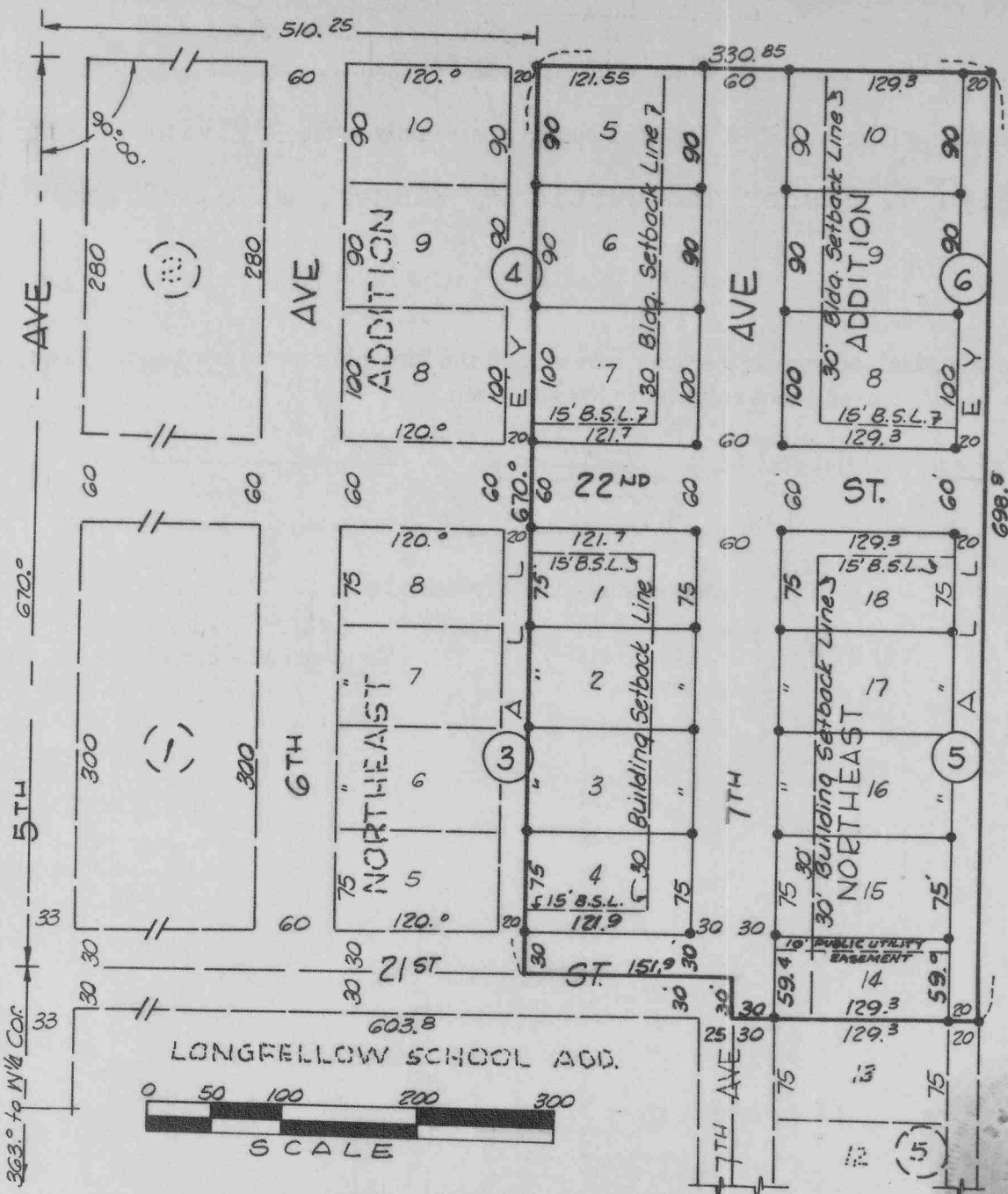


556

NORTHEAST ADDITION TO THE CITY OF SCOTTSBLUFF, NEBR.

LOTS 1, 2, 3, 4, BLOCK 3, & LOTS 5, 6, 7, BLOCK 4;  
 LOTS 14, 15, 16, 17, 18, BLOCK 5, & LOTS 8, 9, 10 BLOCK 6;

256



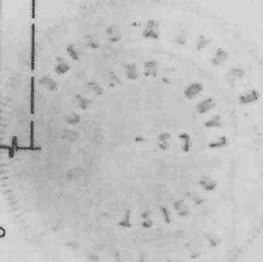
• SURVEYOR'S CERTIFICATE •

I, E.Y. GRUPE, a competent surveyor of Scotts Bluff County, Nebraska, do hereby certify that on the 27th day of February 1965, I completed a survey of Lots 1, 2, 3, 4, Block 3; Lots 5, 6, 7, Block 4; Lots 14, 15, 16, 17, 18, Block 5; Lots 8, 9, 10, Block 6, NORTHEAST ADDITION to the City of Scottsbluff, Nebraska and a part of 21st Street, 22nd Street; 7th Avenue and the alley adjoining such Lots on the east as shown by the accompanying plat; all situated on a part of the Southwest Quarter of the Northwest Quarter (SW $\frac{1}{4}$  NW $\frac{1}{4}$ ) of Section Twenty-four (24), Township Twenty-two (22) North, Range Fifty-five (55) West of the Sixth Principal Meridian in Scotts Bluff County, Nebraska, more particularly described as follows; Beginning at a point 1033 feet north and 510.25 feet East of the Southwest Corner of the NW $\frac{1}{4}$  of such Section 24; such point is also situated 20 feet East of the northeast corner of Lot 10, Block 4, Northeast Addition, according to the recorded plat thereof, thence continuing east and perpendicular to such West Section line a distance of 330.85 feet; thence South and parallel to such west line of Section 24, a distance of 698.9 feet; thence West on the North line of Lot 13, Block 5, Northeast Addition a distance of 179.3 feet; thence North 30 feet; to the centerline of 21st Street; thence West on such center-line for a distance of 151.9 feet; thence North 670.0 feet to the point of beginning.

That the accompanying plat is correct delineation of such survey drawn to a scale of 100 feet to one inch. That all dimensions are shown in feet and decimals. That all Block corners are marked with 5/8" x 36" iron rods and all other lots corners are marked with 5/8" x 18" iron rods.

WITNESS MY HAND AND SEAL this 27th day of February 1965.

*E. Y. Grupe*  
 E.Y. GRUPE Scottsbluff, Nebraska  
 Nebr. Reg. Land Surveyor L.S. 69



557

Northeast Addition (Continuation sheet-page 2)

DEDICATION

We, the undersigned, being the owners of that part of the SW $\frac{1}{4}$  NW $\frac{1}{4}$  Sec. 24, T 22 N, R 55 W of the 6th P.M., in Scotts Bluff County, Nebraska, have caused said real estate to be surveyed and platted as Lots 1, 2, 3, 4, Block 3; and Lots 5, 6, 7, Block 4; Lots 14 to 18 Incl., Block 5; Lots 8, 9, 10, Block 6; Northeast Addition to the City of Scottsbluff, Nebraska, as shown by the accompanying plat and surveyor's certificate.

The above described and foregoing subdivision of Northeast Addition and the Easements, Streets, Avenues and Alleys adjoining, as appears on this plat is made with the free consent and in accordance with the desire of the undersigned owners.

We, hereby dedicate the Streets, Avenues, Alleys and Easements designated upon and referred to in the said Plat to the use and benefit of the Public, and further annex and make said real estate a part of the City of Scottsbluff, Nebraska

Dated this 29<sup>th</sup> day of March 1965.

*Dorothea Frank*  
Dorothea Frank

*William R. Frank*  
William R. Frank, Executor

ACKNOWLEDGEMENT

State of Nebraska )  
Scottsbluff County ) ss

On this 29<sup>th</sup> day of March 1965, before me, a Notary Public duly commissioned and qualified for and residing in said county, personally came Dorothea Frank, a single person; and William R. Frank, Executor of the Estate of Owen A. Frank; by me known to be the identical persons whose names are affixed to the above dedication and acknowledge the same to be their voluntary acts and deeds.

*Kenneth G. Robert*  
Notary Public

My Commission Expires: 27<sup>th</sup> February 1969



APPROVAL AND ACCEPTANCE

The accompanying plat and dedication approved and accepted by the Mayor and City Council of the City of Scottsbluff, Nebraska, by resolution duly passed this 14<sup>th</sup> day of June, 1965.

*G. C. Thomas*  
Mayor

Attest: *A. L. Prosser*  
City Clerk



256