

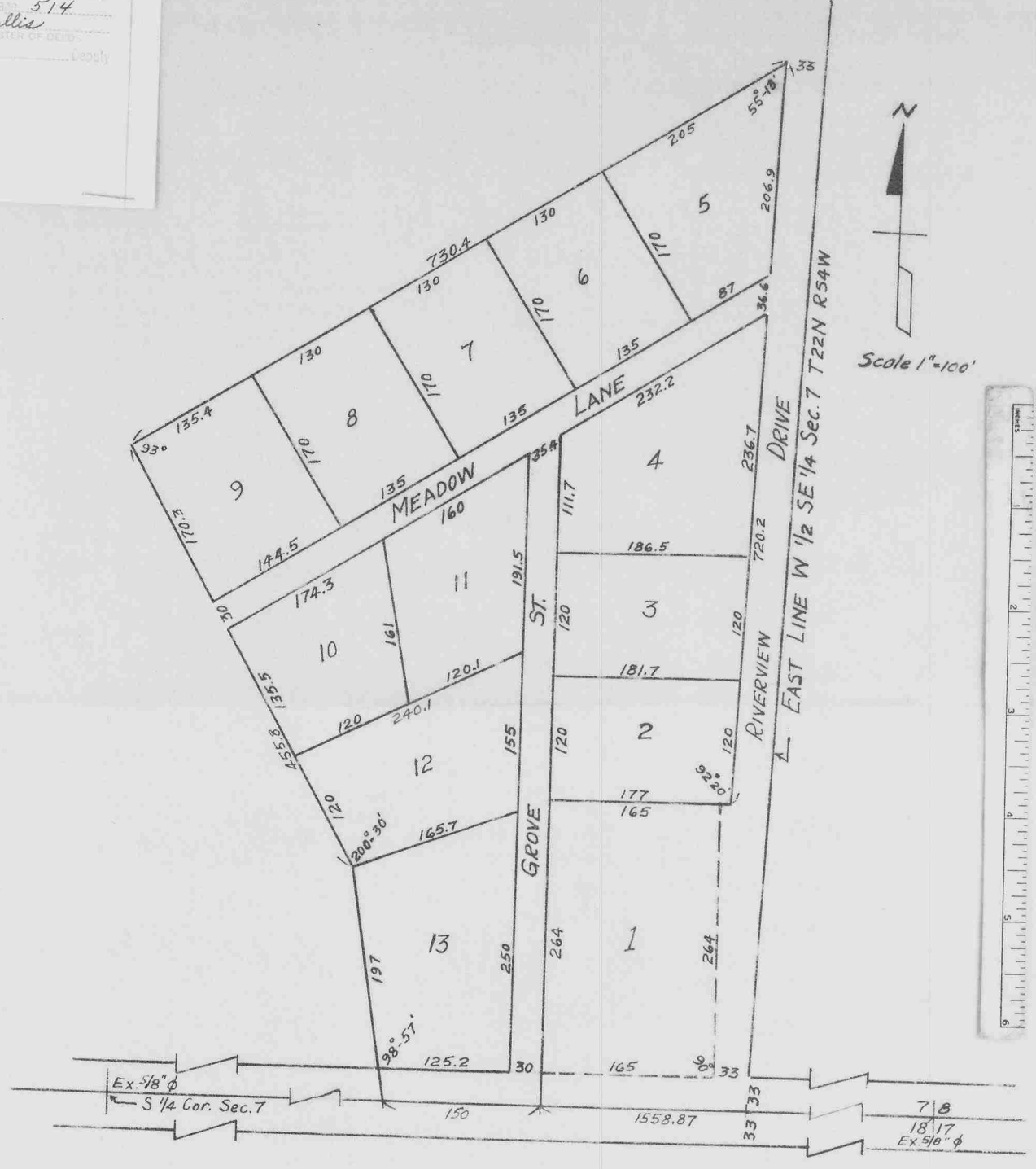
See Replat Lots 10 & 11 Map Addition - Book 194 Pg. 684

(See Misc. 84-360
Corrects lot sizes)

NEBRASKA
GENERAL
TAX REG.
PICTURED 00352

STATE OF NEBRASKA,)
SCOTTS BLUFF COUNTY) SS
Entered in numerical index and filed for record
the 27 day of February 1963 at 11:15
o'clock A.M. and recorded in Book 108 of
Deeds or Maps 514
By John T. Langley Surveyor of Deeds
County

HAYS ADDITION



I, JOHN T. LANGLEY, a competent surveyor of Scottsbluff, Nebraska, hereby certify that I have surveyed HAYS ADDITION to Scotts Bluff County Nebraska, more particularly described as follows: Beginning at a point 1558.87 feet from the South-east corner of Section Seven (7) Township Twenty-two (22) North, Range Fifty-four (54) West of the 6 P.M. and on the South line of said Sec. 7; thence North and at right angles to the South line of Sec. 7 a distance of 297 feet; thence angle right 90° a distance of 177 feet to a point 33 feet West of the East line of the W 1/2 of the SE 1/4 of said Sec. 7; thence angle 87°40' left a distance of 720.2 feet; thence angle left 124°42' a distance of 730.4 feet; thence angle left 87°0' a distance of 455.8 feet; thence angle right 20°30' a distance of 230.7 feet to a point on the South line of said Sec. 7; thence angle left 81°3' a distance of 150 feet to the point of beginning. The above plat is a correct delineation of the survey, drawn to a scale of one (1) inch equals one hundred (100) feet. One half (1/2) inch by twenty-four (24) inch iron rods are driven into the ground ten (10) inches below the surface at all lot corners. All dimensions are in feet and decimals.
WITNESS MY HAND AND SEAL this 26th day of December, 1962.

J. T. Langley
J. T. Langley, Scottsbluff, Nebraska
NEBRASKA REGISTERED LAND SURVEYOR L. S. 160

00352