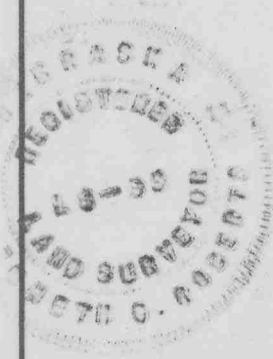
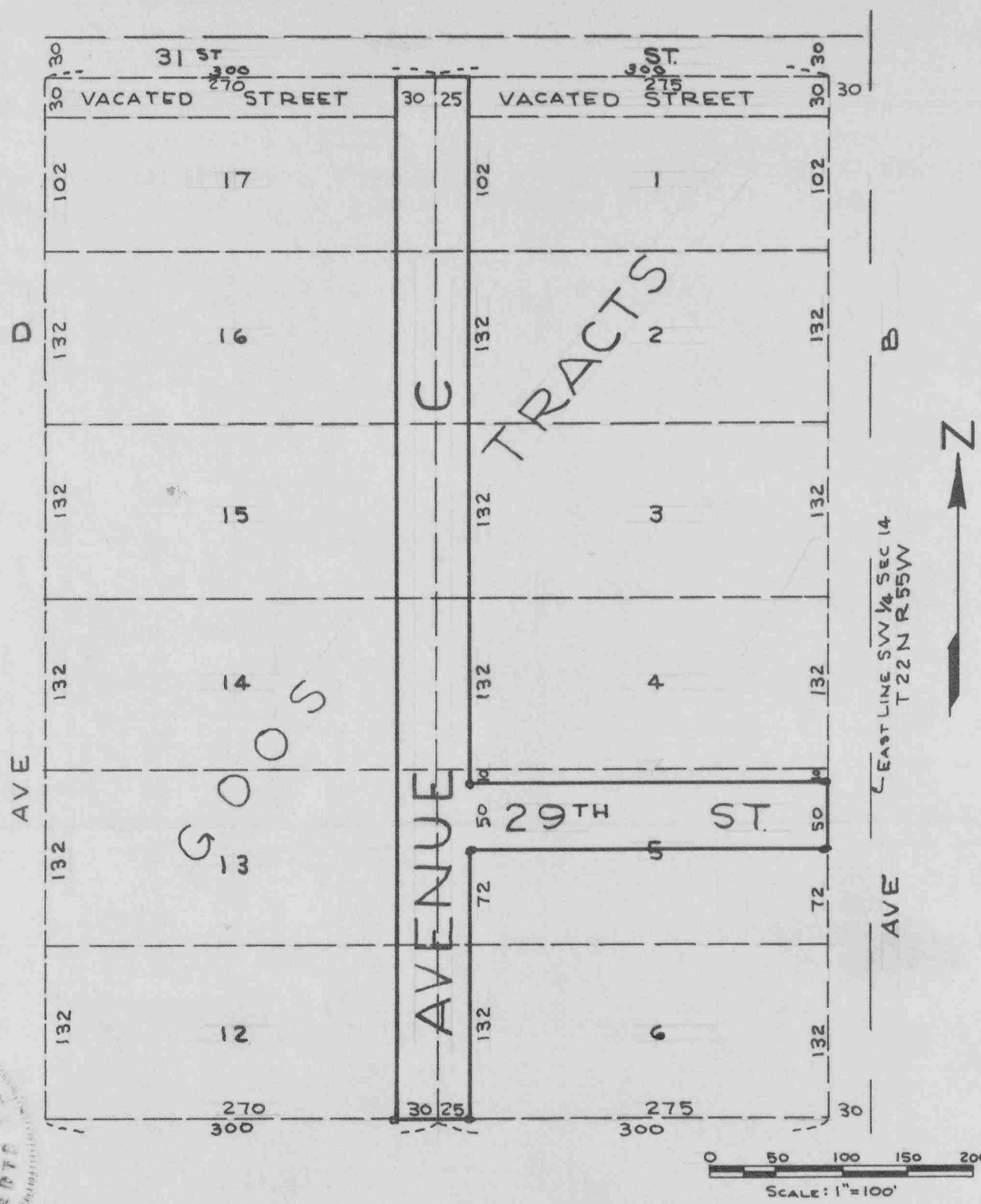
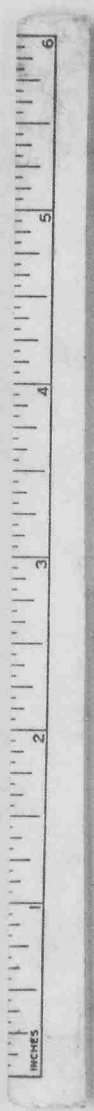


PLAT & DEDICATION OF A PART OF
 AVENUE C & 29TH STREET IN THE CITY
 OF SCOTTSBLUFF, NEBR.

93509



SURVEYOR'S CERTIFICATE

I, KENNETH GEORGE ROBERTS, A COMPETENT SURVEYOR OF SCOTTSBLUFF COUNTY, NEBRASKA
 HEREBY CERTIFY:
 THAT ON THE 15TH DAY OF APRIL 1962, I COMPLETED A SURVEY OF A PART OF GOOS TRACTS,
 AN ADDITION TO THE CITY OF SCOTTSBLUFF, NEBRASKA, MORE PARTICULARLY DESCRIBED AS THE;
 WEST 25 FEET OF TRACTS 1, 2, 3, 4, 5 & 6 AND THAT PART OF THE
 VACATED STREET DIRECTLY ABUTTING THE WEST 25 FEET OF SAID TRACT 1.
 EAST 30 FEET OF TRACTS 12, 13, 14, 15, 16, 17 AND THAT PART OF THE VACATED
 STREET ABUTTING THE EAST 30 FEET OF SAID TRACT 17.
 SOUTH 50 FEET OF NORTH 60 FEET OF TRACT 5.
 THAT THE ACCOMPANYING PLAT IS A TRUE AND CORRECT DELINEATION OF SAID SURVEY
 DRAWN TO A SCALE OF 100 FEET TO AN INCH AND THAT ALL DIMENSIONS ARE SHOWN IN FEET
 AND DECIMALS.
 THAT ALL CORNERS ARE MARKED WITH IRON RODS DRIVEN FLUSH WITH THE GROUND.
 WITNESS MY HAND AND SEAL THIS 15TH DAY OF APRIL 1962

Kenneth George Roberts
 KENNETH GEORGE ROBERTS
 SCOTTSBLUFF NEBRASKA
 NEBR. REGISTERED LAND SURVEYOR LS 33

• DEDICATION •

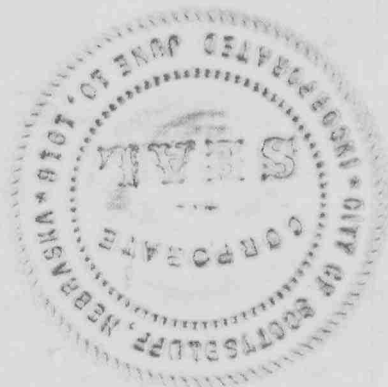
WE, THE UNDERSIGNED, BEING THE OWNERS OF A PART OF GOOS TRACTS, AN ADDITION SITUATED IN THE CITY OF SCOTTSBLUFF, SCOTTSBLUFF COUNTY, NEBRASKA, AND MORE PARTICULARLY DESCRIBED IN SURVEYOR'S CERTIFICATE, HAVE CAUSED SAID LAND TO BE SURVEYED AND PLATTED AS A PART OF 29TH STREET AND AVENUE C, AS SHOWN BY THE ACCOMPANYING PLAT AND SURVEYOR'S CERTIFICATE. WE HEREBY DEDICATE THE STREETS AND AVENUES DESIGNATED UPON AND REFERRED TO IN SAID PLAT AND FURTHER OUTLINED BY A HEAVY CONTINUOUS BLACK LINE, TO THE USE AND BENEFIT OF THE PUBLIC.

DATED THIS 23rd DAY OF April 1962.

CITY OF SCOTTSBLUFF, NEBRASKA
A MUNICIPAL CORPORATION

William E. Nichol
MAYOR WILLIAM E. NICHOL

ATTEST: C. D. Schwamer
C.D. SCHWAMER CITY CLERK



• ACKNOWLEDGEMENT •

STATE OF NEBRASKA) ss.
SCOTTSBLUFF COUNTY)

ON THIS 23rd DAY OF April, 1962, BEFORE ME A NOTARY PUBLIC DULY COMMISSIONED IN AND FOR SAID COUNTY, PERSONALLY CAME William E. Nichol AND C. D. SCHWAMER, CITY CLERK OF THE CITY OF SCOTTSBLUFF, NEBRASKA, TO ME KNOWN TO BE THE IDENTICAL PERSONS WHOSE NAMES ARE AFFIXED TO THE FOREGOING PLAT AND DEDICATION AND ACKNOWLEDGED THE SAME TO BE THEIR VOLUNTARY ACTS AND DEEDS. WITNESS MY HAND AND NOTARIAL SEAL THE DAY AND YEAR LAST ABOVE WRITTEN.

H. L. Ferguson
NOTARY PUBLIC



• APPROVAL AND ACCEPTANCE •

THE ACCOMPANYING PLAT AND DEDICATION APPROVED AND ACCEPTED BY THE MAYOR AND CITY COUNCIL OF THE CITY OF SCOTTSBLUFF, NEBRASKA, BY RESOLUTION DULY PASSED THIS 23 DAY OF April, 1962.

William E. Nichol
MAYOR

ATTEST: C. D. Schwamer
CITY CLERK

